



Virginia Healthcare Workforce Briefs

Indicators from the Bureau of Labor Statistics'
Current Employment Statistics Survey
Series 1: State & National Employment

Series 1, Issue 16

April 2013

Inside this Brief:

Jobs Created	2
Employment Growth	2
Share of Employment Growth	3
Growth Trends	3
About the Data	4

Data in the report is seasonally adjusted, and includes employees of private firms only. Self-employed persons, including health professionals in private practice, are not included.

Highlights

- ◆ According to preliminary estimates, employment in Virginia's Health Care & Social Assistance (HC&SA) sector fell by 600 jobs in March, which represents a one-month annualized growth rate of -1.8%.
- ◆ February's preliminary estimate for Virginia's HC&SA employment fell by 500 jobs. After this revision, the HC&SA sector added 2,500 jobs during the previous month.
- ◆ Virginia's HC&SA sector has seen employment losses for two of the first three months of 2013, which is the first time this has happened since February of 2010. Regardless, thanks to the strong month in February, the sector has still added 300 net jobs so far this year.
- ◆ The job losses in Virginia's HC&SA sector were largely mirrored by overall trends in Virginia's economy in March. For the month, Virginia's total non-farm payroll fell by 5,700 jobs, representing a one-month annualized growth rate of -1.8%.
- ◆ Relative to Virginia, the national economy did well in March. The national HC&SA sector added 27,900 jobs, while total nonfarm payroll increased by 88,000 jobs.

Data in Brief

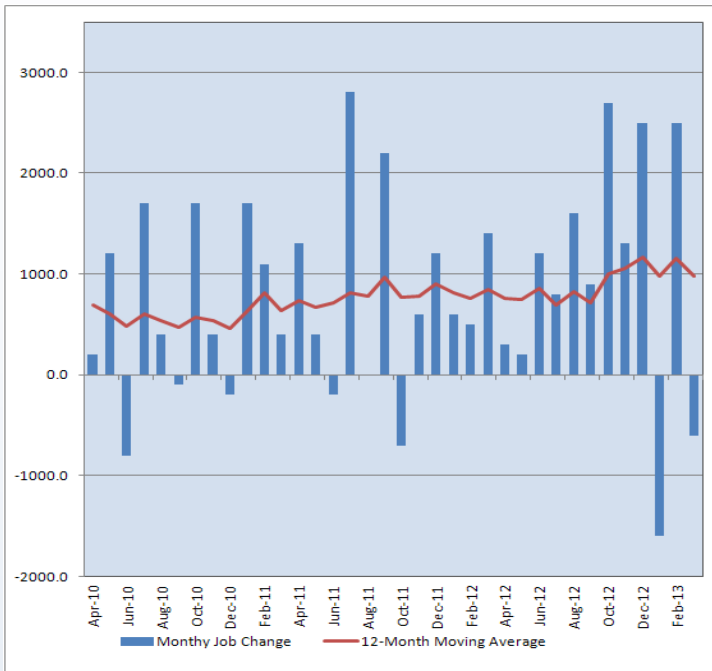
Seasonally Adjusted*	Employment, in Thousands				Growth Rate, Annualized		
	Mar. 2012	Dec. 2012	Feb. 2012	Mar. 2013	12 Month	3 Month	1 Month
Nonfarm, Total							
Virginia	3,726.2	3,745.8	3,761.2	3,755.5 ^P	0.8%	1.0%	-1.8%
National	133,285.0	134,691.0	135,107.0	135,195.0 ^P	1.4%	1.5%	0.8%
Health & Social Assistance							
Virginia	389.9	401.4	402.3	401.7 ^P	3.0%	0.3%	-1.8%
National	16,878.8	17,150.9	17,204.3	17,232.2 ^P	2.1%	1.9%	2.0%
All Other Nonfarm							
Virginia	3,336.3	3,344.4	3,358.9	3,353.8 ^P	0.5%	1.1%	-1.8%
National	116,406.2	117,540.1	117,902.7	117,962.8 ^P	1.3%	1.4%	0.6%

^P: Preliminary Results

*Seasonally adjusted data is adjusted by the Bureau of Labor Statistics to account for weather, holidays and other seasonal changes. Economists use seasonally adjusted data to reveal underlying trends over time. This series uses seasonally adjusted data exclusively. When comparing data in this series to other HWDC series, or publications from other sources, it is important to note whether the data reported has been seasonally adjusted.

Jobs Created

Figure 1: Monthly Change in Employment in Virginia’s Health Care & Social Assistance Sector, Seasonally Adjusted.



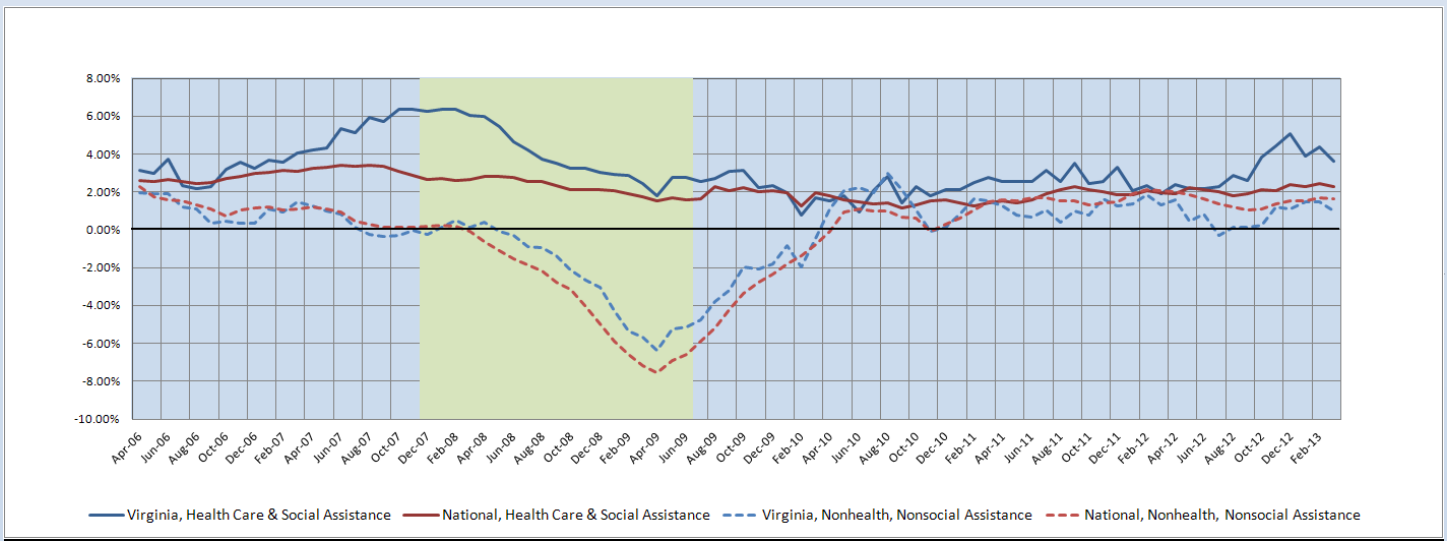
According to preliminary data released on April 19, 2013 by the US Department of Labor, Bureau of Labor Statistics, Virginia’s HC&SA sector lost 600 jobs in March. This is the second time in the last three months in which Virginia’s HC&SA sector has lost jobs, although March’s losses are considerably less than the 1,600 jobs lost in January. The first quarter of 2013 has represented a rather inauspicious start to the new year for the HC&SA sector, but it has still managed to add 300 jobs despite the volatility in employment. In comparison, during the first quarter of 2012, Virginia’s HC&SA sector added 2,500 jobs. Furthermore, the sector did not have a single month of employment losses in all of 2012.

In addition to March’s job losses, February’s preliminary estimate for HC&SA employment was revised downward by 500 jobs. Despite this downward revision, the sector still added 2,500 jobs during the month, which represents its third-strongest month in the past seven years, bested only by the gains of July 2011 and October 2012.

Employment Growth

After peaking at a rate of 5.1% in December 2012, the six-month moving average of HC&SA employment growth has declined to 3.6% in March. This is the lowest level for the six-month moving average of HC&SA employment growth since September 2011, but despite this recent pull back, it still remains at a higher level than at almost any time since the end of the recession. In addition, Virginia’s HC&SA sector continues to outperform the national HC&SA sector, which currently has a six-month employment growth moving average of just 2.3%. The growth in Virginia’s HC&SA sector is even more impressive given the relative underperformance of Virginia’s broader economy. The six-month moving average of Virginia’s total nonfarm payroll is currently just 1.0% and has lagged the corresponding rate for national growth since November 2011.

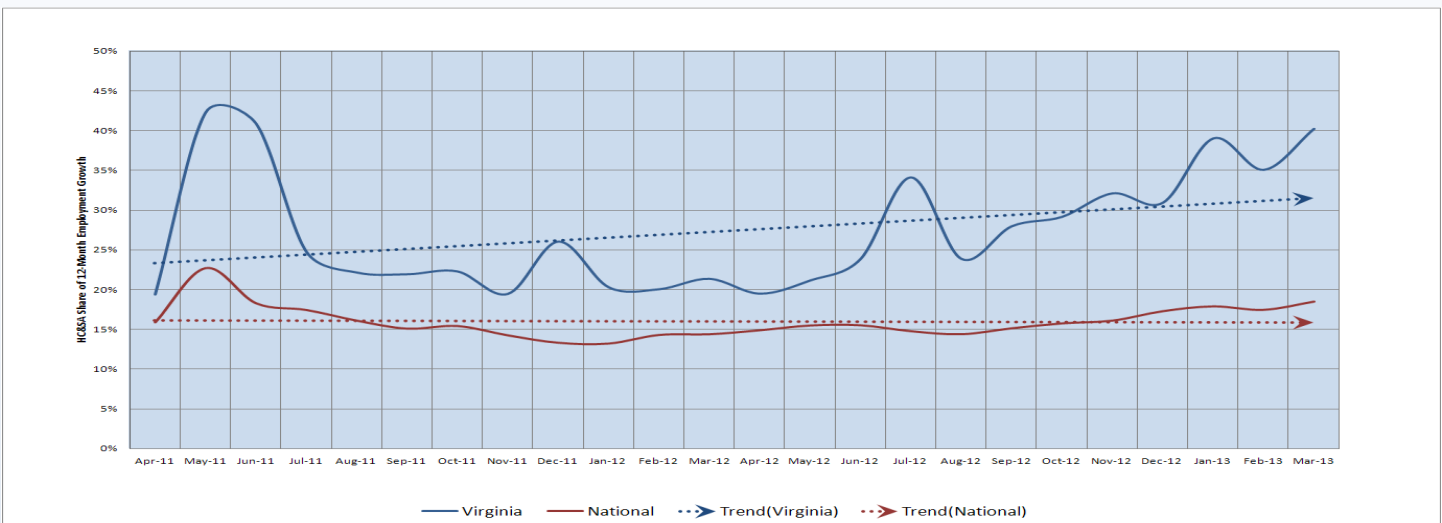
Figure 2: Six-Month Moving Average, Employment Growth, Seasonally Adjusted.



Share of Employment Growth

Despite February’s job losses, Virginia’s HC&SA sector has continued to increase its contribution to 12-month employment growth in the state’s economy. The sector is now responsible for 40% of all employment growth over the past 12 months, which represents its highest share since mid-2011. Meanwhile, the national economy has not been as dependent on the health care sector for its employment growth. Currently, 19% of 12-month employment growth in the United States is attributable to the national HC&SA sector. This is due in part to the strength of the national economy relative to Virginia’s employment situation. Total national nonfarm payroll has not seen a monthly decline since September 2010; during that same time period, Virginia’s total nonfarm payroll has declined on ten separate occasions.

Figure 3: HC&SA Share of 12-Month Employment Growth , Seasonally Adjusted

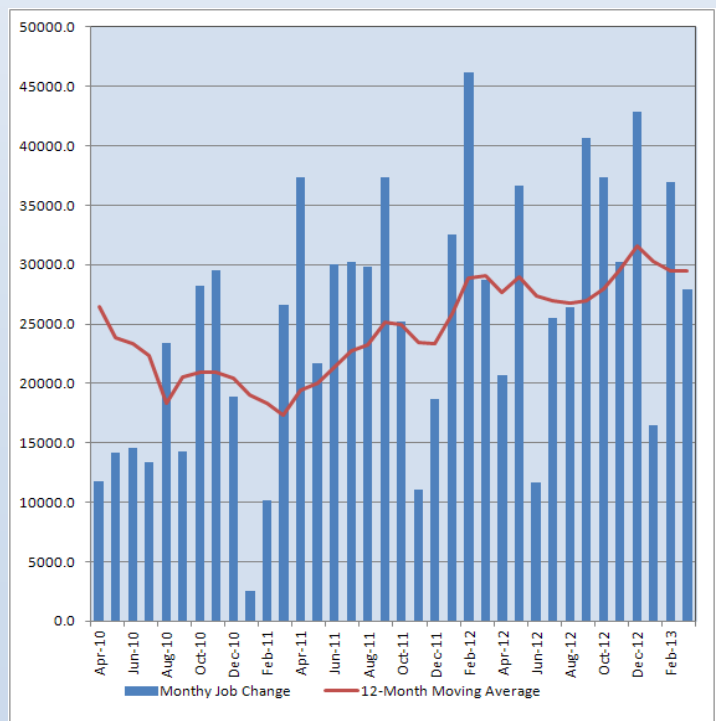


National HC&SA Employment

Relative to Virginia, the national HC&SA sector has shown less volatile growth over the past three years. In fact, the national health care sector has not had a single month of negative employment growth during that time period. Furthermore, the pace of employment growth seems to be accelerating. Over the past 12 months, the national HC&SA sector has averaged 29,450 new jobs per month; the same figure in March 2010 was just 26,333 jobs per month, and it fell as low as 17,300 jobs in March 2011.

With respect to one-month and three-month annualized growth rates, Virginia’s HC&SA sector has been growing slower than average; indeed, short-term employment growth has been rather anemic in the Commonwealth. While the national average is approximately 2.0%, Virginia’s three-month annualized growth rate has barely budged at 0.3%. However, Virginia still exhibits stronger long-term employment growth in the HC&SA sector: While the national HC&SA sector has grown at 2.1% over the past 12 months, Virginia’s HC&SA sector has grown at a faster 3.0% annual rate.

Figure 4: Monthly Change in Employment in National Health Care & Social Assistance Sector, Seasonally Adjusted.



Healthcare Workforce
Data Center

Perimeter Center
9960 Mayland Drive, Suite 300
Henrico, VA 23233-1463

Phone: (804) 367-2115
Fax: (804) 527-4434
E-mail: hwdc@dhp.virginia.gov

www.dhp.virginia.gov/hwdc/

Virginia Healthcare Workforce Briefs are produced by
Justin Crow, MPA
HWDC Research Analyst
&
Christopher Coyle
HWDC Research Assistant

Follow us on. . .

Tumblr: <http://vahwdc.tumblr.com/>

The Department of Health Professions Healthcare Workforce Data Center works to improve the data collection and measurement of Virginia's healthcare workforce through regular assessment of workforce supply and demand issues among the 80 professions and 350,000 practitioners licensed in Virginia by DHP.

The HWDC collects data on Virginia's licensed health professionals through surveys completed during the online license renewal and application process. Survey results and data may be accessed on our website: www.dhp.virginia.gov/hwdc/.

The HWDC also provides a series of Virginia Healthcare Workforce Briefs based on data collected by the US Department of Labor's Bureau of Labor Statistics and the US Department of Commerce' Bureau of Economic Analysis.

Virginia Healthcare Workforce Briefs:

Series 1: State & National Employment (Monthly)

Series 2: Virginia Regional Employment (Monthly)

Series 3: Income & Compensation (Quarterly)

About the Data

Data in this report is from the US Department of Labor, Bureau of Labor Statistics' Current Employment Statistics program. The CES program surveys about 140,000 businesses and government agencies monthly. Unless otherwise noted, this series uses seasonally-adjusted data that removes seasonal variations related to weather, holidays, weekends, seasons and other predictable variations. This allows us to better examine underlying trends in the labor market. Data from recent months is preliminary and subject to revision in future releases from the CES. Revisions will be reported in future editions of this series. Unless otherwise noted, the CES data presented in this series:

Includes:

- ◆ Data on employed individuals drawing a paycheck (payroll employees).
- ◆ All employees, regardless of role, occupation or hours worked.
- ◆ HC&SA employees in the private sector only.
- ◆ Persons employed by health professionals in private practice.
- ◆ Both government and private sector workers in nonfarm employment data.

Does not include:

- ◆ Self-employed workers or volunteers, including health professionals in private practice.
 - ◆ HC&SA employees in the public sector. (These are counted as government workers in monthly reports. Approximately 54,500 of Virginia's public sector workers worked in the HC&SA sector in 2010 at the federal, state and local levels).
 - ◆ Information on hours worked or the quality of employment.
 - ◆ Government workers in HC&SA level data. (Government workers, regardless of occupation and role, are classified as public sector employees).
-