



Virginia Healthcare Workforce Briefs

Indicators from the Bureau of Labor Statistics'
Current Employment Statistics Survey
Series 1: State & National Employment

Series 1, Issue 23

December 2013

Inside this Brief:

Virginia HC&SA Employment	2
National HC&SA Employment	2
Employment Growth	3
Share of Employment Growth	3
About the Data	4

Data in the report is seasonally adjusted, and includes employees of private firms only. Self-employed persons, including health professionals in private practice, are not included.

Highlights

- ◆ According to preliminary estimates, Virginia's Health Care & Social Assistance (HC&SA) sector added 2,200 jobs in November.
- ◆ The preliminary estimate for Virginia's HC&SA employment in October was revised downward by 200 jobs. With this revision, Virginia's HC&SA sector lost 2,000 jobs in October. Other than the loss of 2,500 jobs in May, this represents the largest loss for Virginia's HC&SA sector in 2013.
- ◆ Preliminary estimates also indicate that the national HC&SA sector added 29,600 jobs during the month. Virginia's HC&SA sector was responsible for 7.4% of this increase.
- ◆ Total nonfarm payroll increased by 5,900 jobs in Virginia during the month of November. Year to date, the state has seen total employment increase by 26,100 jobs. With 7,400 jobs added so far in 2013, the state's HC&SA sector represents nearly 30% of this increase.
- ◆ The national economy added 203,000 jobs in November. This represents the third strongest month for national employment in 2013. Year to date, the national economy has added more than 2 million jobs; the HC&SA sector has been responsible for 14% of this increase.

Data in Brief

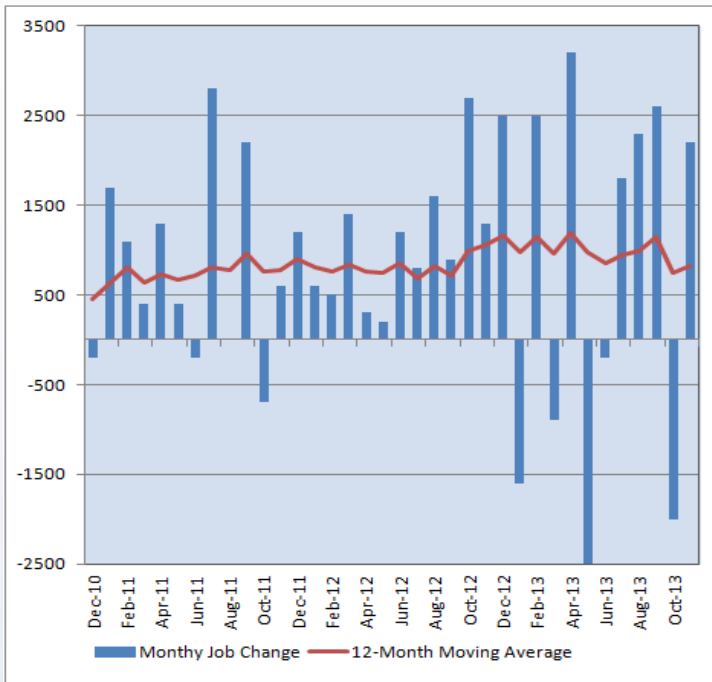
Seasonally Adjusted*	Employment, in Thousands				Growth Rate, Annualized		
	Nov. 2012	Aug. 2013	Oct. 2013	Nov. 2013	12 Month	3 Month	1 Month
Nonfarm, Total							
Virginia	3,746.1	3,770.8	3,766.0	3,771.9	0.7%	0.1%	1.9%
National	134,472.0	136,187.0	136,562.0	136,765.0	1.7%	1.7%	1.8%
Health & Social Assistance							
Virginia	398.9	406.0	406.6	408.8	2.5%	2.8%	6.7%
National	17,108.0	17,358.1	17,399.1	17,428.7	1.9%	1.6%	2.1%
All Other Nonfarm							
Virginia	3,347.2	3,364.8	3,359.4	3,363.1	0.5%	-0.2%	1.3%
National	117,364.0	118,828.9	119,162.9	119,336.3	1.7%	1.7%	1.8%

Preliminary estimates are italicized

*Seasonally adjusted data is adjusted by the Bureau of Labor Statistics to account for weather, holidays and other seasonal changes. Economists use seasonally adjusted data to reveal underlying trends over time. This series uses seasonally adjusted data exclusively. When comparing data in this series to other HWDC series, or publications from other sources, it is important to note whether the data reported has been seasonally adjusted.

Virginia HC&SA Employment

Figure 1: Monthly Change in Employment in Virginia's Health Care & Social Assistance Sector, Seasonally Adjusted.



According to preliminary data released on December 20, 2013 by the U.S. Department of Labor, Bureau of Labor Statistics, Virginia's HC&SA sector added 2,200 jobs in November. Meanwhile, preliminary estimates for October were revised downward by 200 jobs. With this revision, the state's HC&SA sector lost 2,000 jobs in October.

The strong employment gains from November helped to offset all the losses from the previous month. In addition, these results resumed an employment surge in the HC&SA sector that began in the summer. Since July, Virginia's HC&SA sector has added 6,900 jobs, which represents more than 90% of the 7,400 jobs that have been added in the sector so far in 2013.

With November's employment gains, the 12-month moving average of Virginia's HC&SA employment change increased from 750 to 825 monthly jobs. Despite the improvement, this is still barely above October's 12-month low.

National HC&SA Employment

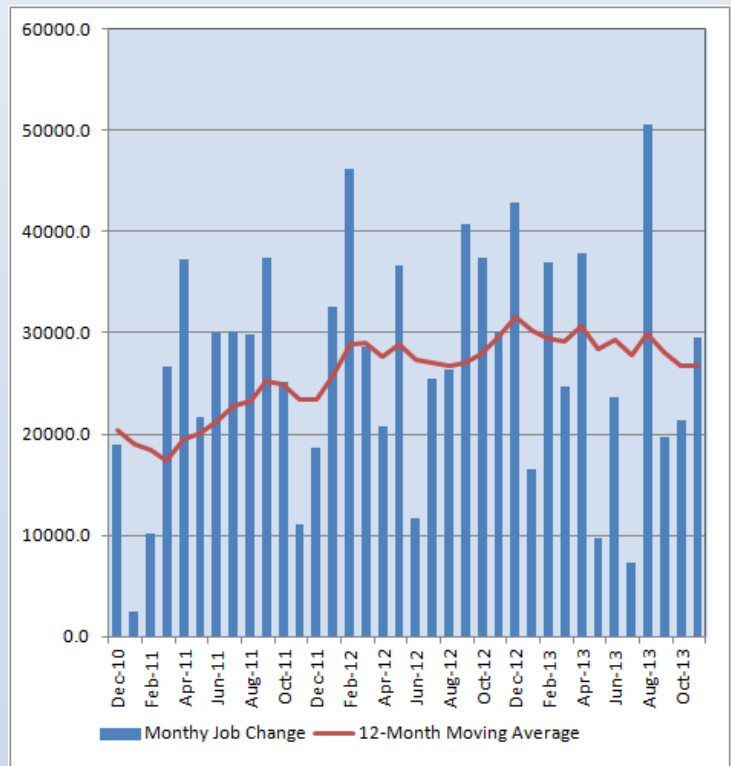
According to preliminary estimates, the national HC&SA sector added 29,600 jobs in November. With these gains, November represents the strongest month for the nation's HC&SA sector since August, when more than 50,000 jobs were created.

However, the 12-month moving average of employment change in the national HC&SA sector dropped yet again in November. At 26,725 monthly jobs, the 12-month moving average of HC&SA employment change has reached its lowest level since August 2012.

Year to date, the national HC&SA sector has added 277,800 jobs. The national HC&SA sector is on track for another strong year of annual employment gains, though not likely as strong as 2012. Through the first 11 months of 2012, the national HC&SA sector added 336,600 jobs.

With 7,400 HC&SA jobs added so far in 2013, Virginia has been responsible for 2.7% of all employment growth in the national HC&SA sector. At the same point in 2012, Virginia's HC&SA sector had added 11,500 jobs, which represented 3.4% of all national employment growth in the HC&SA sector.

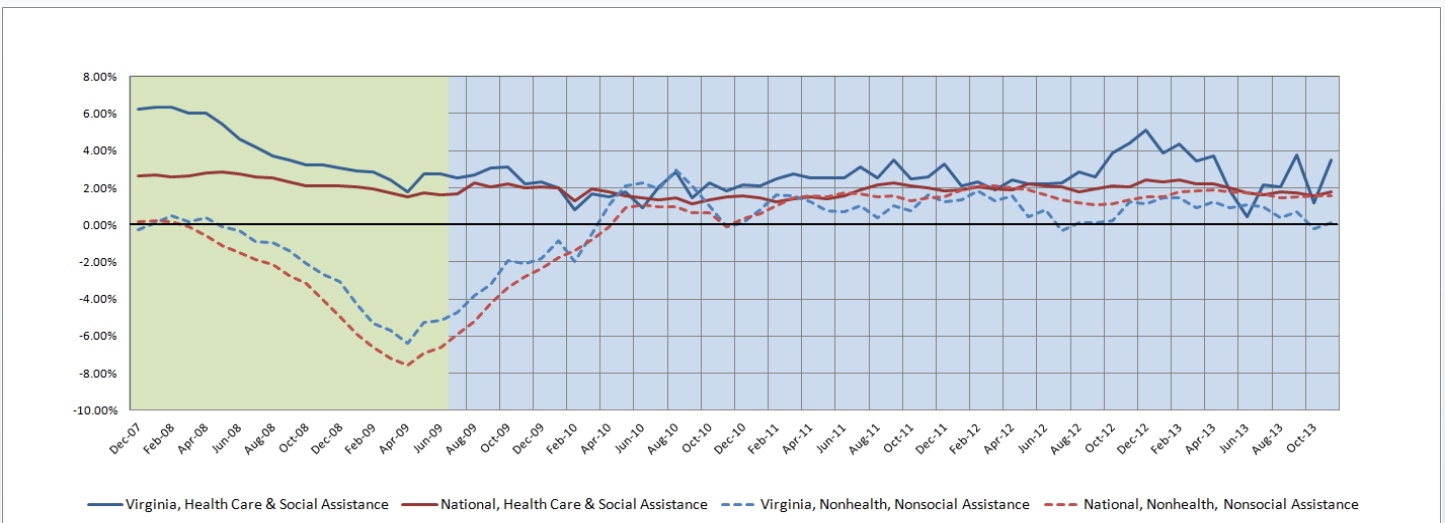
Figure 2: Monthly Change in Employment in National Health Care & Social Assistance Sector, Seasonally Adjusted.



Employment Growth

After experiencing a dramatic decline in October, the six-month moving average of Virginia’s HC&SA employment growth rebounded strongly in November, nearly tripling from 1.2% to 3.5%. Meanwhile, the six-month moving average of employment growth in Virginia’s non-HC&SA sectors turned positive in November after dipping into negative territory during the previous month. Regardless, over the past six months, Virginia’s employment growth has been driven in large part by gains in the HC&SA sector. Whereas Virginia’s HC&SA and non-HC&SA sectors have diverged considerably in recent months, the national economy has converged through much of 2013. In November, the six-month moving average of employment growth in the national HC&SA sector increased to 1.77%, while the non-HC&SA sectors held steady at 1.57%.

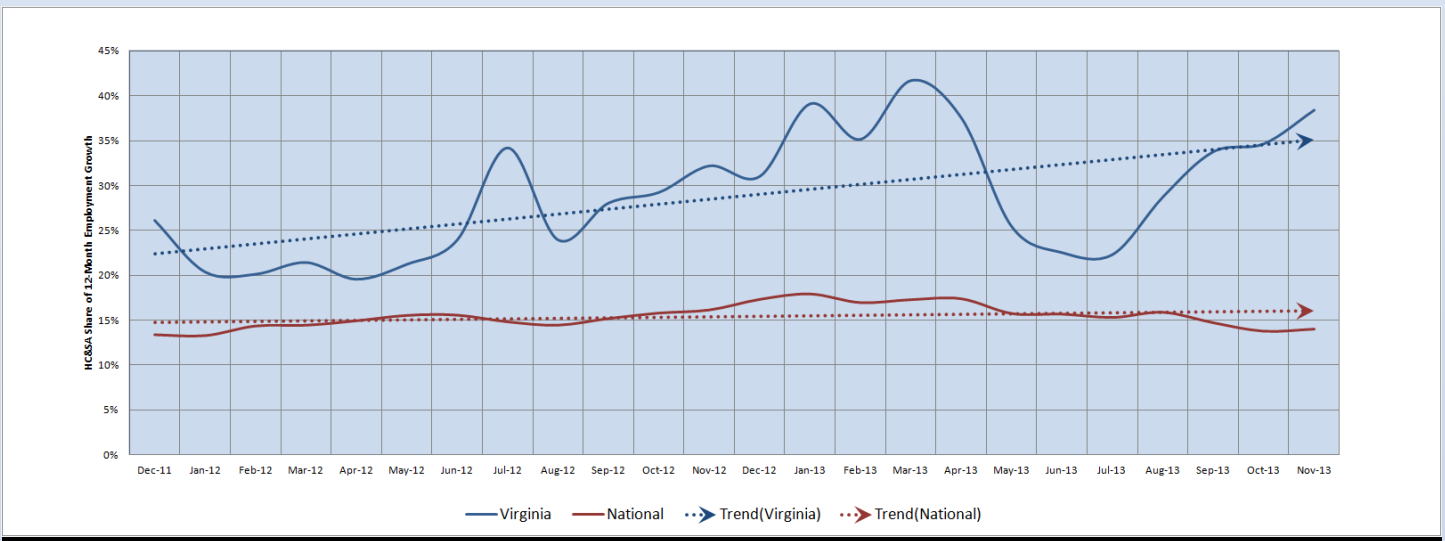
Figure 3: Six-Month Moving Average, Employment Growth, Seasonally Adjusted



Share of Employment Growth

Thanks to November’s employment gains, the share of Virginia’s 12-month employment growth that is attributable to the HC&SA sector increased for the fourth consecutive month. Currently, the HC&SA employment growth share stands at 38%, which represents its highest level since April. This also represents a 73% increase in growth share from the lows seen in June and July, reinforcing the notion that Virginia’s HC&SA employment growth has strengthened since the summer. Alternatively, the 12-month national HC&SA growth share remained steady at 14% in November. Unlike Virginia, the national HC&SA sector has seen its growth share decline steadily through most of 2013.

Figure 4: HC&SA Share of 12-Month Employment Growth, Seasonally Adjusted



Healthcare Workforce
Data Center

Perimeter Center
9960 Mayland Drive, Suite 300
Henrico, VA 23233-1463

Phone: (804) 367-2115
Fax: (804) 527-4434
E-mail: hwdc@dhp.virginia.gov

www.dhp.virginia.gov/hwdc/

Virginia Healthcare Workforce Briefs are produced by
Justin Crow, MPA
HWDC Research Analyst
&
Christopher Coyle
HWDC Research Assistant

Follow us on. . .

Tumblr: <http://vahwdc.tumblr.com/>

The Department of Health Professions Healthcare Workforce Data Center works to improve the data collection and measurement of Virginia's healthcare workforce through regular assessment of workforce supply and demand issues among the 80 professions and 350,000 practitioners licensed in Virginia by DHP.

The HWDC collects data on Virginia's licensed health professionals through surveys completed during the online license renewal and application process. Survey results and data may be accessed on our website: www.dhp.virginia.gov/hwdc/.

The HWDC also provides a series of Virginia Healthcare Workforce Briefs based on data collected by the US Department of Labor's Bureau of Labor Statistics and the US Department of Commerce' Bureau of Economic Analysis.

Virginia Healthcare Workforce Briefs:

Series 1: State & National Employment (Monthly)

Series 2: Virginia Regional Employment (Monthly)

Series 3: Income & Compensation (Quarterly)

About the Data

Data in this report is from the US Department of Labor, Bureau of Labor Statistics' Current Employment Statistics program. The CES program surveys about 140,000 businesses and government agencies monthly. Unless otherwise noted, this series uses seasonally-adjusted data that removes seasonal variations related to weather, holidays, weekends, seasons and other predictable variations. This allows us to better examine underlying trends in the labor market. Data from recent months is preliminary and subject to revision in future releases from the CES. Revisions will be reported in future editions of this series. Unless otherwise noted, the CES data presented in this series:

Includes:

- ◆ Data on employed individuals drawing a paycheck (payroll employees).
- ◆ All employees, regardless of role, occupation or hours worked.
- ◆ HC&SA employees in the private sector only.
- ◆ Persons employed by health professionals in private practice.
- ◆ Both government and private sector workers in nonfarm employment data.

Does not include:

- ◆ Self-employed workers or volunteers, including health professionals in private practice.
 - ◆ HC&SA employees in the public sector. (These are counted as government workers in monthly reports. Approximately 54,500 of Virginia's public sector workers worked in the HC&SA sector in 2010 at the federal, state and local levels).
 - ◆ Information on hours worked or the quality of employment.
 - ◆ Government workers in HC&SA level data. (Government workers, regardless of occupation and role, are classified as public sector employees).
-