



Virginia Healthcare Workforce Briefs

Indicators from the Bureau of Labor Statistics'
Current Employment Statistics Survey
Series 1: State & National Employment

Series 1, Issue 14

February 2013

Inside this Brief:

Jobs Created	2
Employment Growth	2
Share of Employment	3
Growth Trends	3
About the Data	4

Data in the report is seasonally adjusted, and includes employees of private firms only. Self-employed persons, including health professionals in private practice, are not included.

Highlights

- ◆ Each year the Bureau of Labor Statistics benchmarks the results of its payroll jobs survey with unemployment insurance data obtained from state employment offices. This brief incorporates the benchmark updates.
- ◆ According to preliminary estimates, Virginia's HC&SA sector lost 1,800 jobs in January, which represents a one-month annualized loss of 5.25%. This loss dropped total HC&SA job numbers below the 400,000 milestone reached in December.
- ◆ December's preliminary estimates were revised upwards by 1,100 HC&SA jobs, resulting in a net gain of 2,500 jobs for the month.
- ◆ Nationally, the HC&SA sector added 19,300 jobs, an annualized growth rate of 1.4%.
- ◆ November's preliminary estimate for Virginia's HC&SA employment was revised downward by 600 jobs. With this revision, Virginia's HC&SA sector added 300 jobs in November.
- ◆ The HC&SA sector accounts for 13.21% of private sector employment in Virginia.

Data in Brief

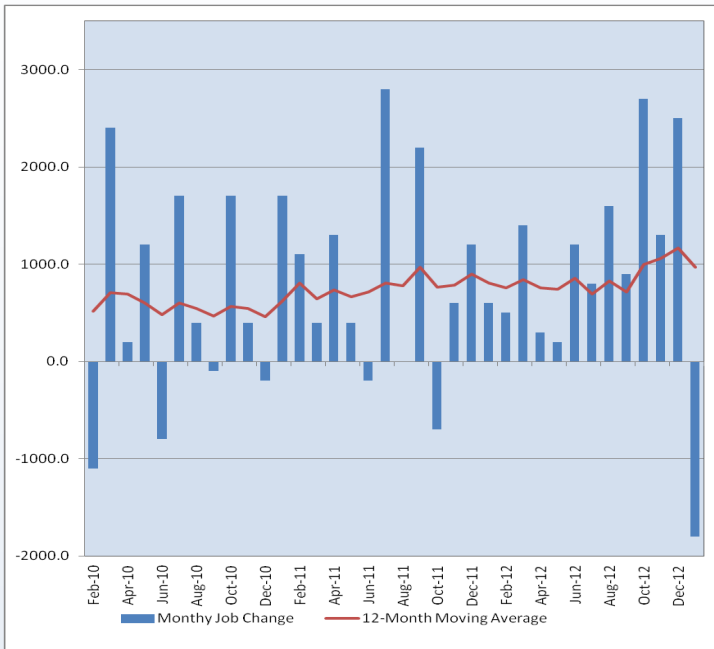
Seasonally Adjusted*	Employment, in Thousands				Growth Rate, Annualized		
	Jan. 2012	Oct. 2012	Dec. 2012	Jan. 2013	12 Month	3 Month	1 Month
Nonfarm, Total							
Virginia	3,714.8	3,740.0	3,745.8	3,741.9 ^P	0.7%	0.2%	-1.2%
National	132,809.0	134,225.0	134,691.0	134,810.0 ^P	1.5%	1.8%	1.1%
Health & Social Assistance							
Virginia	388.0	397.6	401.4	399.6 ^P	3.0%	2.0%	-5.3%
National	16,803.9	17,077.8	17,150.9	17,170.2 ^P	2.2%	2.2%	1.4%
All Other Nonfarm							
Virginia	3,326.8	3,342.4	3,344.4	3,342.3 ^P	0.5%	0.0%	-0.8%
National	116,005.1	117,147.2	117,540.1	117,639.8 ^P	1.4%	1.7%	1.0%

^P: Preliminary Results

*Seasonally adjusted data is adjusted by the Bureau of Labor Statistics to account for weather, holidays and other seasonal changes. Economists use seasonally adjusted data to reveal underlying trends over time. This series uses seasonally adjusted data exclusively. When comparing data in this series to other HWDC series, or publications from other sources, it is important to note whether the data reported has been seasonally adjusted.

Jobs Created

Figure 1: Monthly Change in Employment in Virginia’s Health Care & Social Assistance Sector, Seasonally Adjusted.



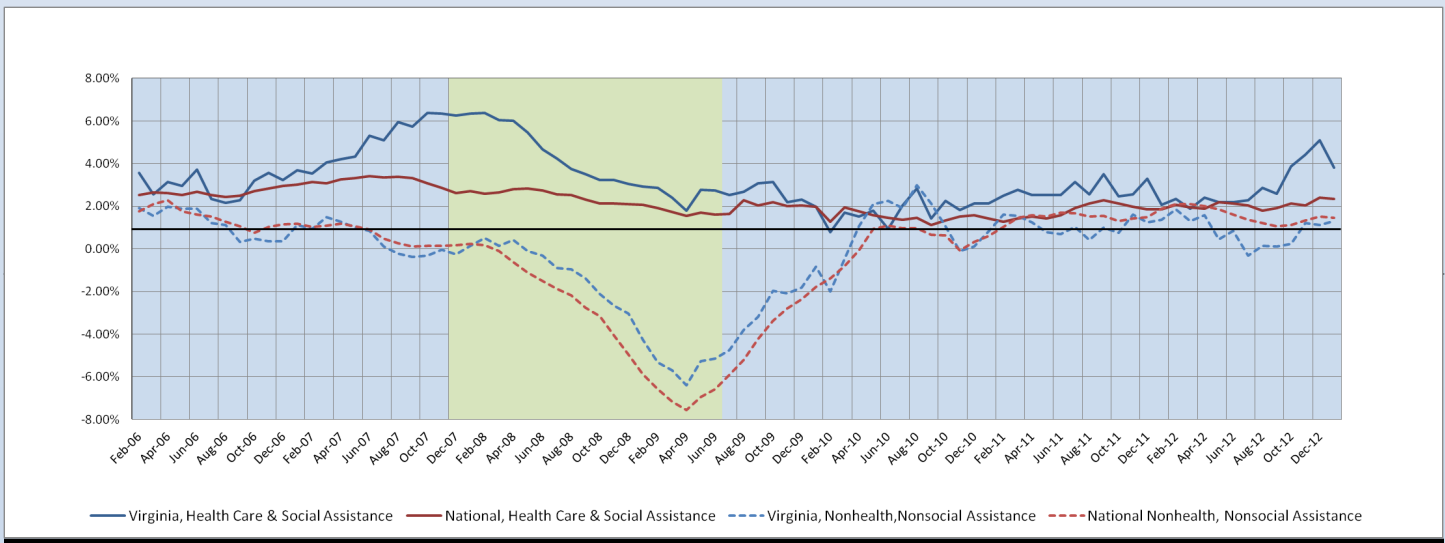
According to preliminary data released on January 18, 2013 by the US Department of Labor, Bureau of Labor Statistics, Virginia’s HC&SA sector lost 1,800 jobs in January. This is the first month over month job loss in the sector since October 2011. It follows a particularly strong latter half of 2012 in which HC&SA job growth advanced at 5% monthly. This drop knocked employment in Virginia’s HC&SA sector below the 400,000 job milestone achieved in December. Nevertheless, December’s preliminary estimate for HC&SA job growth was revised upward by 1,100 jobs, cementing the 400,000 job achievement. Revisions generally occur due to delayed responses from smaller establishments.

January’s drop represents a 5.25% annualized rate of decline in the sector. Despite this the 12 month moving averages remains strong, with the sector adding about 967 jobs monthly. Nationally, the HC&SA sector added 20,000 jobs, growing at an annualized rate of 1.4%.

Employment Growth

In January, the six-month moving average of monthly employment growth in Virginia’s HC&SA sector continued to outperform both non-HC&SA job growth in Virginia as well as overall HC&SA job growth in the United States. Following December’s revisions, the 6-month MA reached a new recent peak of just over 5% in December before falling slightly in January. Overall, Virginia’s nonfarm payrolls dropped 3,900 jobs in January with the HC&SA sector absorbing just under half of the loss. Still, the strong latter half of 2012 means that job growth in Virginia’s HC&SA sector is outpacing the national HC&SA sector by about 1.5% and both Virginia and nonfarm job growth by almost 2.5% over the past 6 months.

Figure 2: Six-Month Moving Average, Employment Growth, Seasonally Adjusted.



Share of Employment

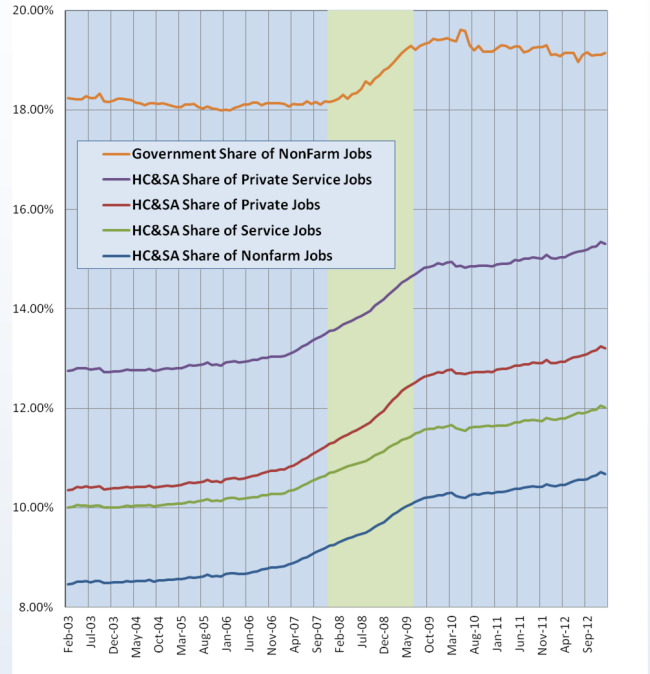
The HC&SA sector’s share of payroll jobs tends to grow through recessions. Additionally, the sector tends to hold onto this elevated share even as job growth returns to normal. This trend has continued in Virginia and the United States through the latest recession.

A further breakdown of employment share by major sector of the economy provides further insight into the HC&SA sector’s importance to Virginia’s labor market. The HC&SA sector accounts for over 13% of private sector employment in Virginia, including over 15% of jobs in the private service industry.

Similar to the HC&SA sector, public sector (government) jobs tend to provide a bulwark against unemployment during a recession. In this recession public sector employment has been declining nationally since the end of hiring for the decennial Census in 2010. In Virginia, however the sector has added 15,000 jobs since 2010, highlighting the importance of the sector to Virginia’s economy.

Nevertheless, government’s share of nonfarm payrolls has been flat in Virginia, while the health sector has continued to gain job share. With the public sector likely to face additional cuts following the implementation of the sequester, the HWDC will take a closer look at HC&SA and government employment in Virginia over the coming months.

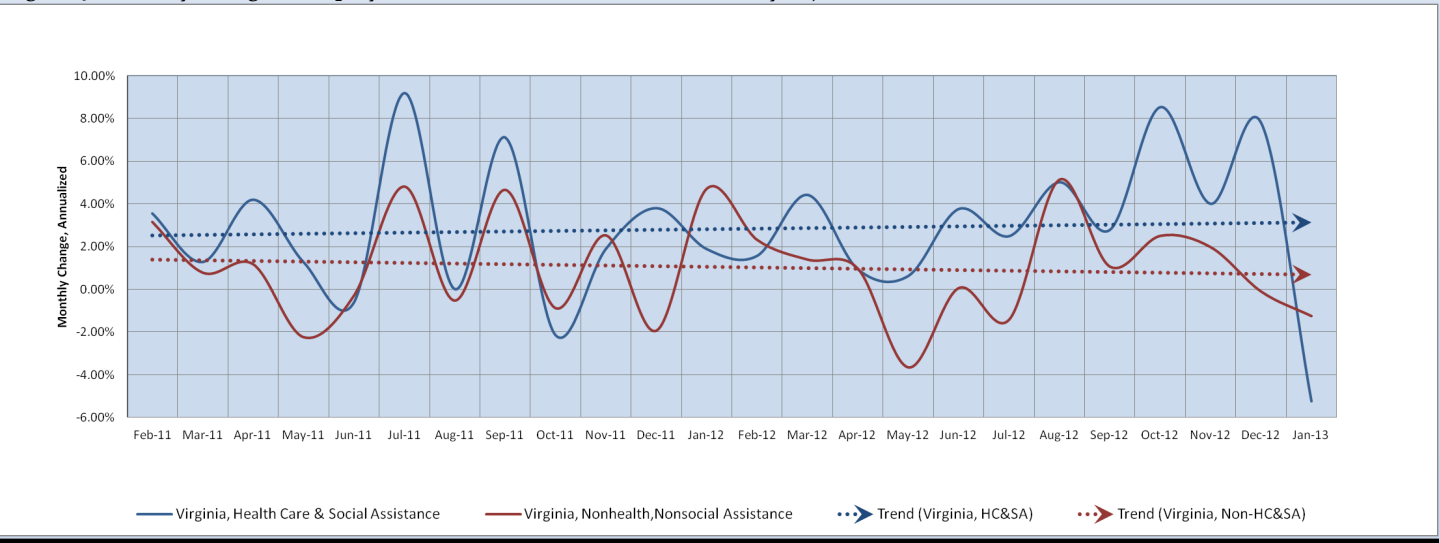
Figure 3: Virginia’s HC&SA Sector’s Share of Employment by Sector & Comparison to Government Share, SA



Growth Trends

Despite January’s job losses, Virginia’s HC&SA sector should continue to see its share of employment grow. The rate of job growth in Virginia’s HC&SA sector continues to accelerate, albeit slowly. However, the rate of growth in Virginia’s non-HC&SA sectors is decelerating just as slowly. The slow differences add up. The gap between the HC&SA and the non-HC&SA growth rates has increased by 1.2 percentage points since January 2011.

Figure 4: Monthly Change in Employment, HC&SA & Non HC&SA, Seasonally Adjusted



Healthcare Workforce
Data Center

Perimeter Center
9960 Mayland Drive, Suite 300
Henrico, VA 23233-1463

Phone: (804) 367-2115
Fax: (804) 527-4434
E-mail: hwdc@dhp.virginia.gov

www.dhp.virginia.gov/hwdc/

Virginia Healthcare Workforce Briefs are produced by
Justin Crow, MPA
HWDC Research Analyst
&
Christopher Coyle
HWDC Research Assistant

Follow us on. . .

Tumblr: <http://vahwdc.tumblr.com/>

The Department of Health Professions Healthcare Workforce Data Center works to improve the data collection and measurement of Virginia's healthcare workforce through regular assessment of workforce supply and demand issues among the 80 professions and 350,000 practitioners licensed in Virginia by DHP.

The HWDC collects data on Virginia's licensed health professionals through surveys completed during the online license renewal and application process. Survey results and data may be accessed on our website: www.dhp.virginia.gov/hwdc/.

The HWDC also provides a series of Virginia Healthcare Workforce Briefs based on data collected by the US Department of Labor's Bureau of Labor Statistics and the US Department of Commerce' Bureau of Economic Analysis.

Virginia Healthcare Workforce Briefs:

Series 1: State & National Employment (Monthly)

Series 2: Virginia Regional Employment (Monthly)

Series 3: Income & Compensation (Quarterly)

About the Data

Data in this report is from the US Department of Labor, Bureau of Labor Statistics' Current Employment Statistics program. The CES program surveys about 140,000 businesses and government agencies monthly. Unless otherwise noted, this series uses seasonally-adjusted data that removes seasonal variations related to weather, holidays, weekends, seasons and other predictable variations. This allows us to better examine underlying trends in the labor market. Data from recent months is preliminary and subject to revision in future releases from the CES. Revisions will be reported in future editions of this series. Unless otherwise noted, the CES data presented in this series:

Includes:

- ◆ Data on employed individuals drawing a paycheck (payroll employees).
- ◆ All employees, regardless of role, occupation or hours worked.
- ◆ HC&SA employees in the private sector only.
- ◆ Persons employed by health professionals in private practice.
- ◆ Both government and private sector workers in nonfarm employment data.

Does not include:

- ◆ Self-employed workers or volunteers, including health professionals in private practice.
 - ◆ HC&SA employees in the public sector. (These are counted as government workers in monthly reports. Approximately 54,500 of Virginia's public sector workers worked in the HC&SA sector in 2010 at the federal, state and local levels).
 - ◆ Information on hours worked or the quality of employment.
 - ◆ Government workers in HC&SA level data. (Government workers, regardless of occupation and role, are classified as public sector employees).
-