



Virginia Healthcare Workforce Briefs

Indicators from the Bureau of Labor Statistics'
Current Employment Statistics Survey
Series 1: State & National Employment

Series 1, Issue 19

July 2013

Inside this Brief:

Virginia HC&SA Employment	2
National HC&SA Employment	2
Share of Employment Growth	3
Employment Growth	3
About the Data	4

Data in the report is seasonally adjusted, and includes employees of private firms only. Self-employed persons, including health professionals in private practice, are not included.

Highlights

- ◆ According to preliminary estimates, Virginia's Health Care & Social Assistance (HC&SA) sector lost 200 jobs in June. This is the first time Virginia's HC&SA sector has suffered back-to-back monthly losses since 2010.
- ◆ May's preliminary estimate for employment in Virginia's HC&SA sector was revised downward by 400 jobs. After this revision, Virginia's HC&SA sector lost 2,500 jobs in May.
- ◆ So far in 2013, Virginia's HC&SA sector has added just 500 jobs. By way of comparison, industry employment increased by 4,200 jobs over the first six months of 2012. In fact, this year's figure represents the weakest first half of a year for HC&SA employment since 2000.
- ◆ The national HC&SA sector had another solid month in June, adding 23,500 jobs. Year-to-date, employment in the national HC&SA sector has increased by 152,200 jobs, of which Virginia has been responsible for just 0.33%.
- ◆ Virginia's total nonfarm payroll increased by 3,400 jobs in June. Employment growth has increased by 1.3% over the past 12 months, which is slightly below the national average.

Data in Brief

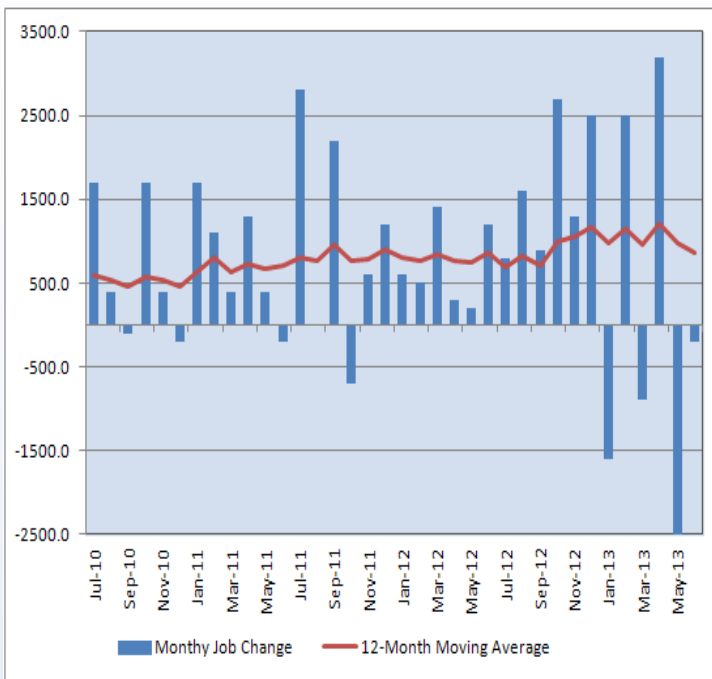
Seasonally Adjusted*	Employment, in Thousands				Growth Rate, Annualized		
	June 2012	Mar. 2013	May 2013	June 2013	12 Month	3 Month	1 Month
Nonfarm, Total							
Virginia	3,717.9	3,753.8	3,763.8	3,767.2	1.3%	1.4%	1.1%
National	133,609.0	135,313.0	135,707.0	135,902.0	1.7%	1.8%	1.7%
Health & Social Assistance							
Virginia	391.6	401.4	402.1	401.9	2.6%	0.5%	-0.6%
National	16,947.8	17,229.1	17,279.6	17,303.1	2.1%	1.7%	1.6%
All Other Nonfarm							
Virginia	3,326.3	3,352.4	3,361.7	3,365.3	1.2%	1.5%	1.3%
National	116,661.2	118,083.9	118,427.4	118,598.9	1.7%	1.8%	1.8%

Preliminary estimates are italicized

*Seasonally adjusted data is adjusted by the Bureau of Labor Statistics to account for weather, holidays and other seasonal changes. Economists use seasonally adjusted data to reveal underlying trends over time. This series uses seasonally adjusted data exclusively. When comparing data in this series to other HWDC series, or publications from other sources, it is important to note whether the data reported has been seasonally adjusted.

Virginia HC&SA Employment

Figure 1: Monthly Change in Employment in Virginia's Health Care & Social Assistance Sector, Seasonally Adjusted.



According to preliminary data released on July 19, 2013 by the U.S. Department of Labor, Bureau of Labor Statistics, Virginia's HC&SA sector lost 200 jobs in June. Meanwhile, May's preliminary estimate for HC&SA employment, which originally indicated that the sector lost 2,100 jobs during the month, was revised downward by an additional 400 jobs.

The first six months of 2013 have been rather difficult for Virginia's HC&SA sector. Employment has actually declined in four of these six months, and the sector has only managed to add 500 jobs year-to-date. This represents the worst first half of a year since 2000, when 1,300 HC&SA jobs were lost between January and June.

Since peaking in April at 1,200 monthly jobs, the 12-month moving average of HC&SA employment has declined by nearly 30% to 858.3 monthly jobs. Regardless, Virginia's HC&SA sector has still grown faster than the national average over the past 12 months.

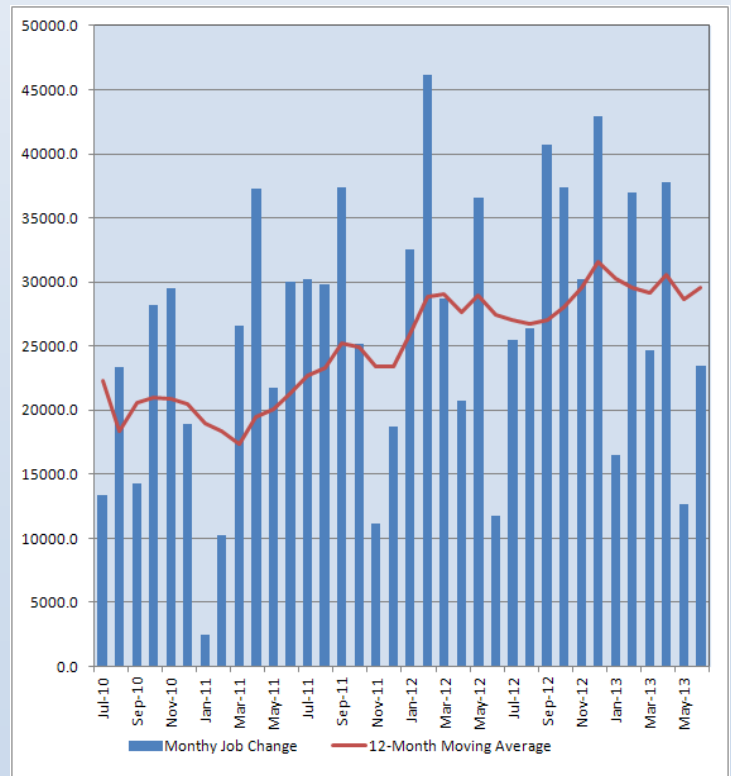
National HC&SA Employment

The national HC&SA sector had another solid month of employment gains in June. Preliminary estimates indicate that 23,500 jobs were added during the month. Although June's growth was slightly below the average increase of 25,367 monthly jobs seen over the first half of 2013, the increase still helped to boost the 12-month moving average of national HC&SA employment by more than 3% to 29,608 monthly jobs.

During the first half of 2013, the national HC&SA sector has added 152,200 jobs. This is comparable to the 176,400 jobs that were added nationwide in the HC&SA sector over the first six months of 2012. Given Virginia's relatively weak employment numbers in the HC&SA sector, it has only been responsible for 0.33% of the year-to-date gains in the national HC&SA sector.

Over the past 12 months, the national HC&SA sector has seen employment grow by 2.1%. It has grown faster than the national economy as a whole, which has grown at just 1.7% during the same time period.

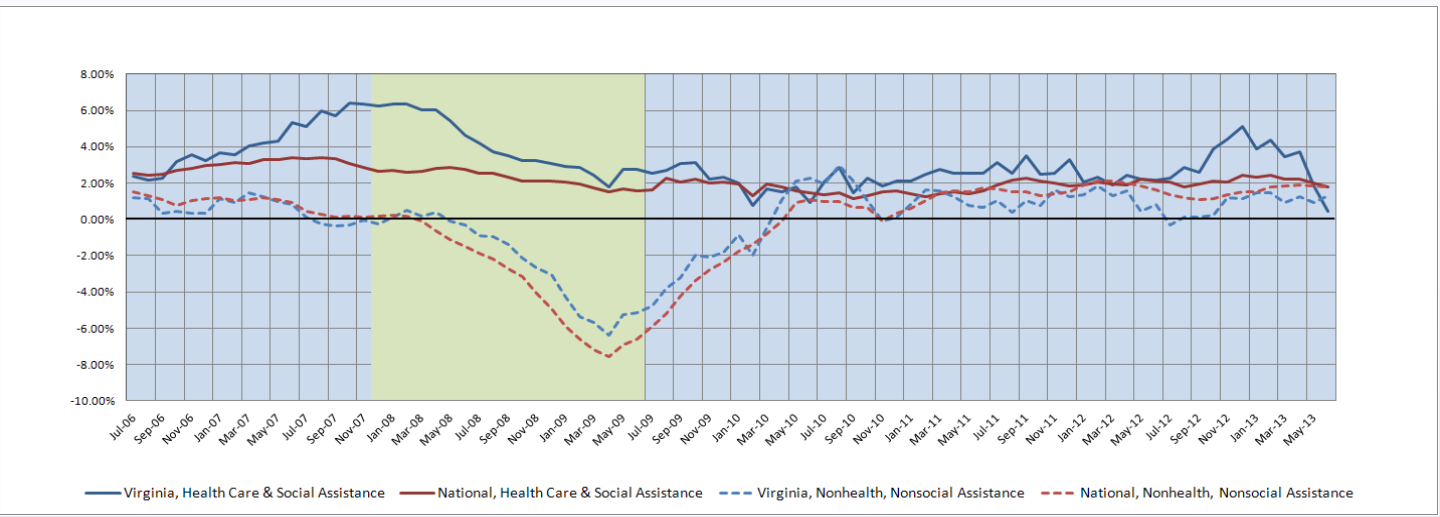
Figure 2: Monthly Change in Employment in National Health Care & Social Assistance Sector, Seasonally Adjusted.



Employment Growth

The decline in the six-month moving average of employment growth in Virginia’s HC&SA sector continued unabated in June with a 76% drop from 1.84% to just 0.44%. With this most recent decline, Virginia’s six-month employment growth moving average in the HC&SA sector has fallen behind the corresponding moving average for the rest of Virginia’s economy and the national HC&SA sector; this has not happened since June 2010. The decline in the six-month moving average for Virginia’s HC&SA sector has been even more pronounced over the first half of the year; since December 2012, it has fallen by more than 90%. Meanwhile, Virginia’s non-HC&SA sectors rebounded from their lowest levels of 2013 last month. After falling to a low of 0.90% in May, its six-month employment growth rate moving average increased to 1.28% in June.

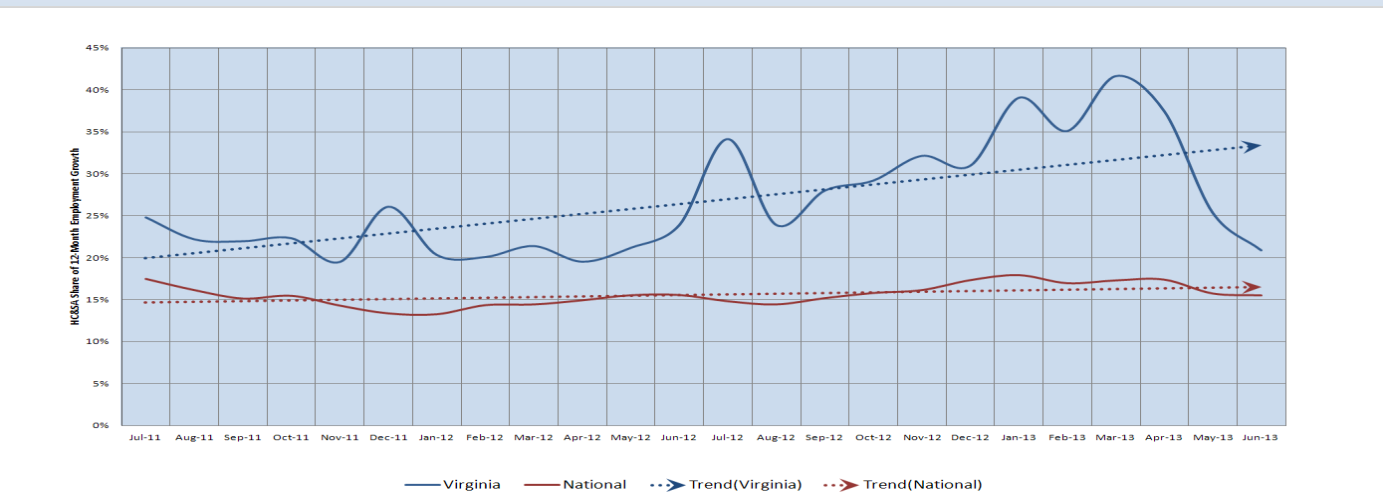
Figure 3: Six-Month Moving Average, Employment Growth, Seasonally Adjusted



Share of Employment Growth

Virginia’s HC&SA share of the state’s previous 12-month employment growth also declined yet again in June from 25% to 21%, a drop of 16%. Much like its six-month employment growth rate moving average, Virginia’s HC&SA share of overall employment growth has been declining for most of 2013. Since the beginning of the year, its share of Virginia’s 12-month employment growth has fallen by nearly half. Because of this recent decline, the HC&SA share of 12-month employment growth has fallen well below its two-year growth share trend line, which has grown by approximately two-thirds since July 2011. Regardless, Virginia’s HC&SA sector continues to retain a relatively stronger share of 12-month employment growth than the national average, which is currently 15%.

Figure 4: HC&SA Share of 12-Month Employment Growth , Seasonally Adjusted



Healthcare Workforce
Data Center

Perimeter Center
9960 Mayland Drive, Suite 300
Henrico, VA 23233-1463

Phone: (804) 367-2115
Fax: (804) 527-4434
E-mail: hwdc@dhp.virginia.gov

www.dhp.virginia.gov/hwdc/

Virginia Healthcare Workforce Briefs are produced by
Justin Crow, MPA
HWDC Research Analyst
&
Christopher Coyle
HWDC Research Assistant

Follow us on. . .

Tumblr: <http://vahwdc.tumblr.com/>

The Department of Health Professions Healthcare Workforce Data Center works to improve the data collection and measurement of Virginia's healthcare workforce through regular assessment of workforce supply and demand issues among the 80 professions and 350,000 practitioners licensed in Virginia by DHP.

The HWDC collects data on Virginia's licensed health professionals through surveys completed during the online license renewal and application process. Survey results and data may be accessed on our website: www.dhp.virginia.gov/hwdc/.

The HWDC also provides a series of Virginia Healthcare Workforce Briefs based on data collected by the US Department of Labor's Bureau of Labor Statistics and the US Department of Commerce' Bureau of Economic Analysis.

Virginia Healthcare Workforce Briefs:

Series 1: State & National Employment (Monthly)

Series 2: Virginia Regional Employment (Monthly)

Series 3: Income & Compensation (Quarterly)

About the Data

Data in this report is from the US Department of Labor, Bureau of Labor Statistics' Current Employment Statistics program. The CES program surveys about 140,000 businesses and government agencies monthly. Unless otherwise noted, this series uses seasonally-adjusted data that removes seasonal variations related to weather, holidays, weekends, seasons and other predictable variations. This allows us to better examine underlying trends in the labor market. Data from recent months is preliminary and subject to revision in future releases from the CES. Revisions will be reported in future editions of this series. Unless otherwise noted, the CES data presented in this series:

Includes:

- ◆ Data on employed individuals drawing a paycheck (payroll employees).
- ◆ All employees, regardless of role, occupation or hours worked.
- ◆ HC&SA employees in the private sector only.
- ◆ Persons employed by health professionals in private practice.
- ◆ Both government and private sector workers in nonfarm employment data.

Does not include:

- ◆ Self-employed workers or volunteers, including health professionals in private practice.
 - ◆ HC&SA employees in the public sector. (These are counted as government workers in monthly reports. Approximately 54,500 of Virginia's public sector workers worked in the HC&SA sector in 2010 at the federal, state and local levels).
 - ◆ Information on hours worked or the quality of employment.
 - ◆ Government workers in HC&SA level data. (Government workers, regardless of occupation and role, are classified as public sector employees).
-