



Virginia Healthcare Workforce Briefs

Indicators from the Bureau of Labor Statistics'
Current Employment Statistics Survey
Series 1: State & National Employment



Series 1, Issue 31

August 2014

Highlights

- ◆ According to preliminary estimates, Virginia's Health Care & Social Assistance (HC&SA) sector lost 100 jobs in July. Despite July's job losses, Virginia's HC&SA sector has still added 3,300 jobs to the state's economy so far this year.
- ◆ Virginia's preliminary HC&SA employment estimate for June was revised upward by 400 jobs. Regardless, Virginia's HC&SA sector still lost 100 jobs during the month.
- ◆ Virginia's total nonfarm payroll saw its biggest monthly jump in nearly two years as 13,300 jobs were created throughout the state in July. In just the past two months, Virginia has added more than 22,000 jobs.
- ◆ The national HC&SA sector added 25,400 jobs during the month. So far in 2014, the national HC&SA sector has seen employment increase by 212,600 jobs, which represents a 15% increase relative to the first seven months of 2013.
- ◆ For the sixth straight month, total nonfarm payroll across the nation increased by more than 200,000. In July, 209,000 jobs were added throughout the country, which represents a 12-month growth rate of 1.9%.

Inside this Brief:

| | |
|---------------------------|---|
| Virginia HC&SA Employment | 2 |
| National HC&SA Employment | 2 |
| Employment Growth | 3 |
| Long-Term Job Growth | 3 |
| About the Data | 4 |

Data in the report is seasonally adjusted, and includes employees of private firms only. Self-employed persons, including health professionals in private practice, are not included.

Data in Brief

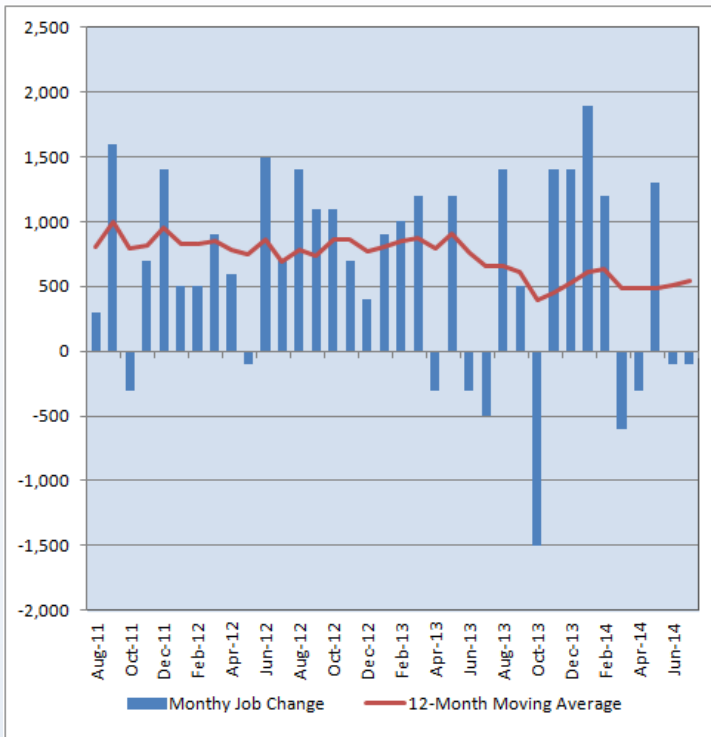
| Seasonally Adjusted* | Employment, in Thousands | | | | Growth Rate, Annualized | | |
|---------------------------------------|--------------------------|-----------|-----------|-----------|-------------------------|---------|---------|
| | July 2013 | Apr. 2014 | June 2014 | July 2014 | 12 Month | 3 Month | 1 Month |
| Nonfarm, Total | | | | | | | |
| Virginia | 3,764.9 | 3,767.2 | 3,774.9 | 3,788.2 | 0.6% | 2.2% | 4.3% |
| National | 136,434.0 | 138,268.0 | 138,795.0 | 139,004.0 | 1.9% | 2.1% | 1.8% |
| Health & Social Assistance | | | | | | | |
| Virginia | 408.3 | 413.7 | 414.9 | 414.8 | 1.6% | 1.1% | -0.3% |
| National | 17,753.0 | 17,973.1 | 18,063.9 | 18,089.3 | 1.9% | 2.6% | 1.7% |
| All Other Nonfarm | | | | | | | |
| Virginia | 3,356.6 | 3,353.5 | 3,360.0 | 3,373.4 | 0.5% | 2.4% | 4.9% |
| National | 118,681.0 | 120,294.9 | 120,731.1 | 120,914.7 | 1.9% | 2.1% | 1.8% |

Preliminary estimates are italicized

*Seasonally adjusted data is adjusted by the Bureau of Labor Statistics to account for weather, holidays and other seasonal changes. Economists use seasonally adjusted data to reveal underlying trends over time. This series uses seasonally adjusted data exclusively. When comparing data in this series to other HWDC series, or publications from other sources, it is important to note whether the data reported has been seasonally adjusted.

Virginia HC&SA Employment

Figure 1: Monthly Change in Employment in Virginia’s Health Care & Social Assistance Sector, Seasonally Adjusted.



According to preliminary data released on August 18, 2014 by the U.S. Department of Labor, Bureau of Labor Statistics, Virginia’s HC&SA sector lost 100 jobs in July. Meanwhile, June’s preliminary estimate for Virginia’s HC&SA employment was revised upward by 400 jobs, but the sector still lost 100 jobs during the month.

Although Virginia’s HC&SA sector has lost jobs in four of the past five months, these losses have been relatively small. In fact, the employment gains from May, the only month in the past five in which HC&SA jobs were created, were greater than the combined loss of the other four months. Year-to-date, Virginia’s HC&SA sector has still added 3,300 jobs, which represents a slight improvement relative to the first seven months of 2013.

In addition, the 12-month moving average of the level change in Virginia’s HC&SA employment increased for the third consecutive month to 542 monthly jobs added. This represents a 12% increase since April, when the 12-month moving average of the level change in HC&SA employment reached a year-to-date low of 483.3 monthly jobs added.

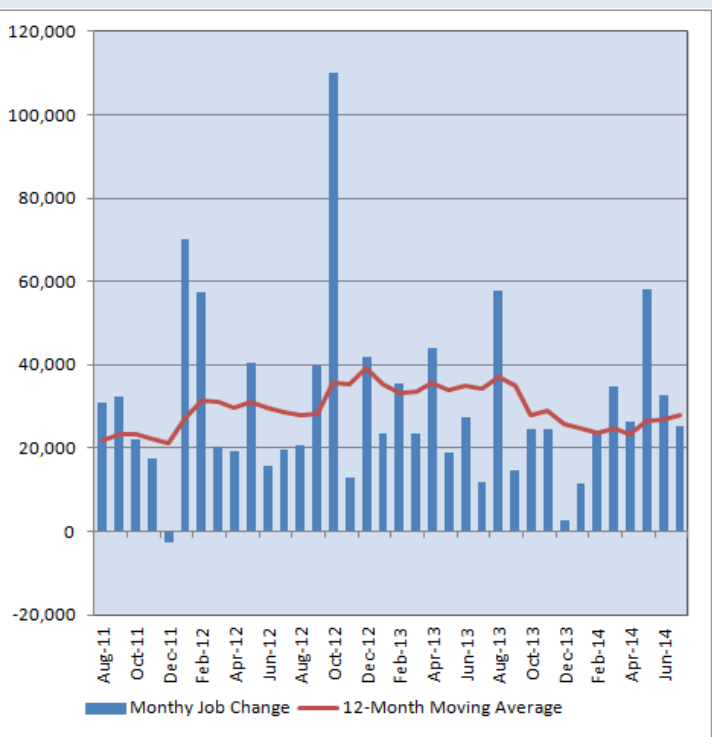
National HC&SA Employment

According to preliminary estimates, the national HC&SA sector added 25,400 jobs in July. Despite the continued growth in the national HC&SA sector, July’s result represents a bit of a slowdown relative to the first half of the year. In fact, this is the first month since January in which the 12-month moving average of the level change in national HC&SA employment has exceeded the monthly change in employment.

Regardless, the 12-month moving average of the level change in national HC&SA employment still increased for the third consecutive month to 28,025 monthly jobs added. This represents an increase of 21% since April, when the 12-month moving average reached a two-year low of 23,167 monthly jobs added.

So far in 2014, the national HC&SA sector has added 212,600 jobs. At the same point in 2013, employment in the national HC&SA sector increased by only 184,400 jobs. This strength has manifested itself in the overall national economy, where total nonfarm payroll has increased by 1,609,000 so far this year, an increase of 17% relative to last year.

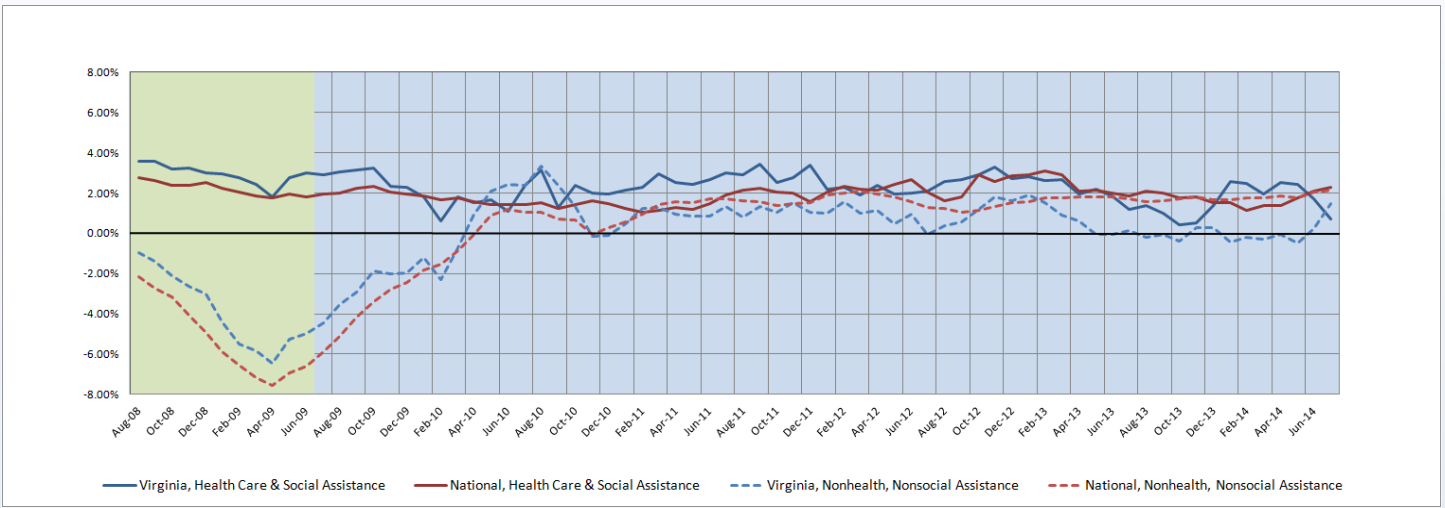
Figure 2: Monthly Change in Employment in National Health Care & Social Assistance Sector, Seasonally Adjusted.



Employment Growth

Thanks to the dramatic increase in new jobs created in the state during the month, the six-month moving average of the employment growth rate in Virginia’s total nonfarm payroll experienced a significant uptick from 0.2% in June to 1.5% in July, its highest value in nearly 18 months. Given this dramatic reversal over the past two months, the six-month moving average of the employment growth rate in Virginia’s total nonfarm payroll now exceeds the corresponding growth rate for Virginia’s HC&SA sector for the first time since September 2010. The latter moving average dropped from 1.7% in June to 0.7% in July, which represents its lowest value in eight months. Meanwhile, the six-month moving averages for the national HC&SA sector and total nonfarm payroll both experienced small increases during the month to 2.3% and 2.1%, respectively.

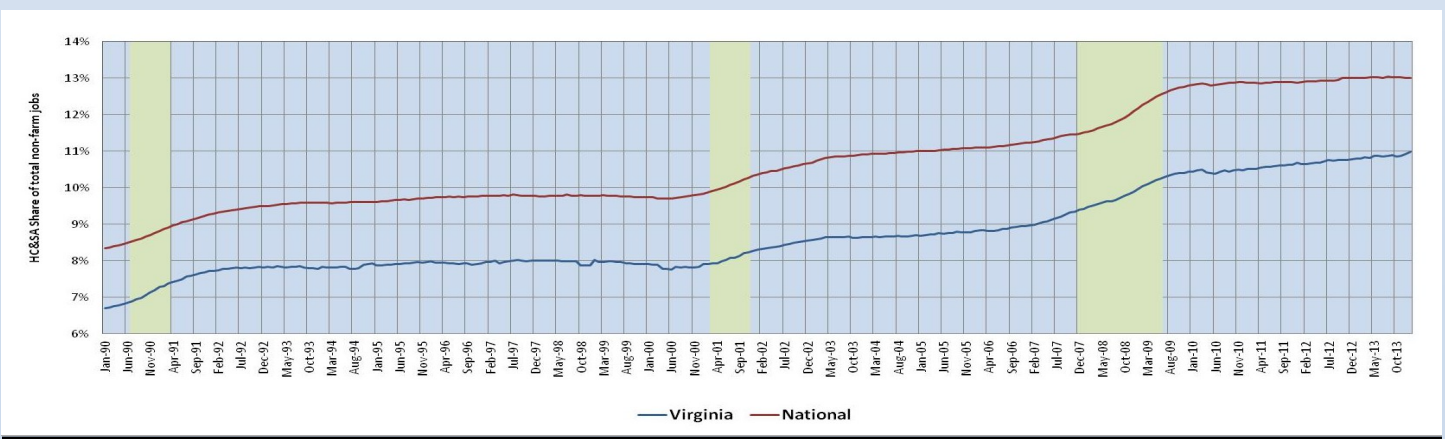
Figure 3: Six-Month Moving Average, Employment Growth, Seasonally Adjusted



Share of Employment

Compared to other sectors of the economy, employment in the HC&SA sector is robust during recessions. Much HC&SA spending depends on public funding and insurance, and because much of it is non-discretionary. At least since the 1990’s, HC&SA employment has risen as a share of total employment in each recession, both nationally and in Virginia. It has maintained this elevated share after each recession passed, rather than slowly reverting to pre-recession levels. Interestingly, HC&SA’s share of employment began to grow *before* the Great Recession, and accelerated through it. Following the Great Recession, HC&SA employment stabilized nationally, as it has in the past. However, in Virginia, HC&SA employment has continued to grow share, though more slowly, gaining almost 3/4 of a percent in share since the end of the recession. This may be due to the unequal impact of federal spending cuts on Virginia slowing job growth in key sectors of Virginia’s economy.

Figure 4: HC&SA Share of Total Non-farm Payroll Jobs, Seasonally Adjusted



Healthcare Workforce
Data Center

Perimeter Center
9960 Mayland Drive, Suite 300
Henrico, VA 23233-1463

Phone: (804) 367-2115
Fax: (804) 527-4434
E-mail: hwdc@dhp.virginia.gov

www.dhp.virginia.gov/hwdc/

Virginia Healthcare Workforce Briefs are produced by
Justin Crow, MPA
HWDC Deputy Director
&
Christopher Coyle
HWDC Research Assistant

Follow us on. . .

Twitter: [@DHP_HWDC](https://twitter.com/DHP_HWDC)

Tumblr: vahwdc.tumblr.com/

The Department of Health Professions Healthcare Workforce Data Center works to improve the data collection and measurement of Virginia's healthcare workforce through regular assessment of workforce supply and demand issues among the 80 professions and 350,000 practitioners licensed in Virginia by DHP.

The HWDC collects data on Virginia's licensed health professionals through surveys completed during the online license renewal and application process. Survey results and data may be accessed on our website: www.dhp.virginia.gov/hwdc/.

The HWDC also provides a series of Virginia Healthcare Workforce Briefs based on data collected by the US Department of Labor's Bureau of Labor Statistics and the US Department of Commerce' Bureau of Economic Analysis.

Virginia Healthcare Workforce Briefs:

Series 1: State & National Employment (Monthly)

Series 2: Virginia Regional Employment (Monthly)

Series 3: Income & Compensation (Quarterly)

About the Data

Data in this report is from the US Department of Labor, Bureau of Labor Statistics' Current Employment Statistics program. The CES program surveys about 140,000 businesses and government agencies monthly. Unless otherwise noted, this series uses seasonally-adjusted data that removes seasonal variations related to weather, holidays, weekends, seasons and other predictable variations. This allows us to better examine underlying trends in the labor market. Data from recent months is preliminary and subject to revision in future releases from the CES. Revisions will be reported in future editions of this series. Unless otherwise noted, the CES data presented in this series:

Includes:

- ◆ Data on employed individuals drawing a paycheck (payroll employees).
- ◆ All employees, regardless of role, occupation or hours worked.
- ◆ HC&SA employees in the private sector only.
- ◆ Persons employed by health professionals in private practice.
- ◆ Both government and private sector workers in nonfarm employment data.

Does not include:

- ◆ Self-employed workers or volunteers, including health professionals in private practice.
 - ◆ HC&SA employees in the public sector. (These are counted as government workers in monthly reports. Approximately 54,500 of Virginia's public sector workers worked in the HC&SA sector in 2010 at the federal, state and local levels).
 - ◆ Information on hours worked or the quality of employment.
 - ◆ Government workers in HC&SA level data. (Government workers, regardless of occupation and role, are classified as public sector employees).
-