



Virginia Healthcare Workforce Briefs

Indicators from the Bureau of Labor Statistics'
Current Employment Statistics Survey
Series 1: State & National Employment

Series 1, Issue 25

February 2014

Inside this Brief:

Virginia HC&SA Employment	2
National HC&SA Employment	2
Employment Growth	3
HC&SA Employment Share	3
About the Data	4

Data in the report is seasonally adjusted, and includes employees of private firms only. Self-employed persons, including health professionals in private practice, are not included.

Highlights

- ◆ Virginia's employment results for January incorporate annual revisions made by the Bureau of Labor Statistics (BLS) that affect results dating back to January 1990.
- ◆ According to preliminary estimates, Virginia's Health Care & Social Assistance (HC&SA) sector added 1,600 jobs in January. This represents the largest one-month increase in Virginia's HC&SA employment in more than two years.
- ◆ December's preliminary estimate for Virginia's HC&SA employment was revised upward by 1,500 jobs. With this revision, Virginia's HC&SA sector added 1,400 jobs in December.
- ◆ Despite the strength in Virginia's HC&SA sector, total nonfarm payroll across the state fell by 9,500 jobs in January. This represents the largest one-month decrease in Virginia's employment numbers in nearly four years.
- ◆ After the annual BLS adjustments, Virginia's total nonfarm payroll increased by only 9,800 jobs last year. With 6,400 jobs added in 2013, Virginia's HC&SA sector was responsible for nearly two-thirds of total statewide employment growth in 2013.

Data in Brief

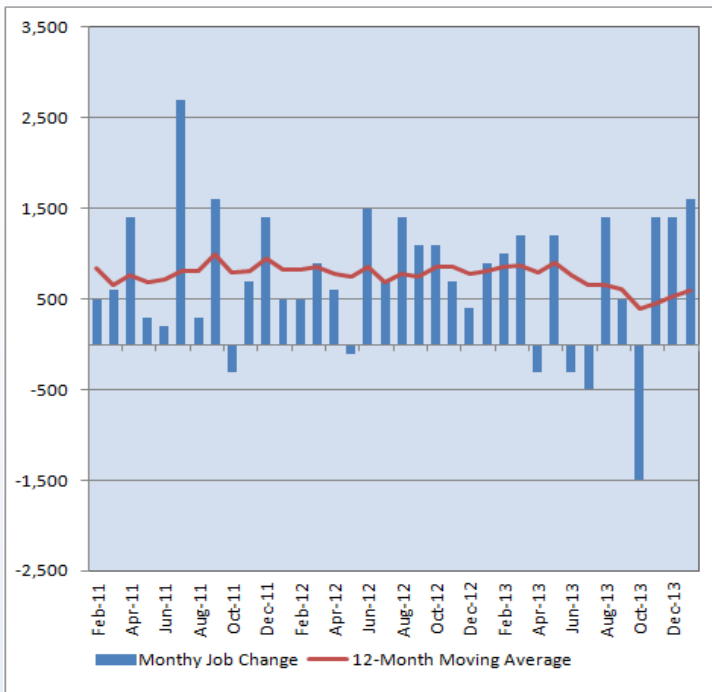
Seasonally Adjusted*	Employment, in Thousands				Growth Rate, Annualized		
	Jan. 2013	Oct. 2013	Dec. 2013	Jan. 2014	12 Month	3 Month	1 Month
Nonfarm, Total							
Virginia	3,760.4	3,763.2	3,768.4	3,758.9	0.0%	-0.5%	-3.0%
National	135,261.0	137,037.0	137,395.0	137,524.0	1.7%	1.4%	1.1%
Health & Social Assistance							
Virginia	406.0	408.7	411.5	413.1	1.7%	4.4%	4.8%
National	17,592.1	17,849.7	17,876.7	17,888.1	1.7%	0.9%	0.8%
All Other Nonfarm							
Virginia	3,354.4	3,354.5	3,356.9	3,345.8	-0.3%	-1.0%	-3.9%
National	117,668.9	119,187.3	119,518.3	119,635.9	1.7%	1.5%	1.2%

Preliminary estimates are italicized

*Seasonally adjusted data is adjusted by the Bureau of Labor Statistics to account for weather, holidays and other seasonal changes. Economists use seasonally adjusted data to reveal underlying trends over time. This series uses seasonally adjusted data exclusively. When comparing data in this series to other HWDC series, or publications from other sources, it is important to note whether the data reported has been seasonally adjusted.

Virginia HC&SA Employment

Figure 1: Monthly Change in Employment in Virginia's Health Care & Social Assistance Sector, Seasonally Adjusted.



According to preliminary data released on March 17, 2014 by the U.S. Department of Labor, Bureau of Labor Statistics, Virginia's HC&SA sector began the new year on a strong note, with employment increasing by 1,600 jobs in January. This represents a one-month annualized growth rate of 4.8%, reaching a level not seen since September 2011.

HC&SA employment was further boosted by an upward revision of 1,500 jobs to December's preliminary estimate. In just the past three months, Virginia's HC&SA sector has seen total employment increase by 4,400 jobs, which represents a strong annualized growth rate of 4.4%

This recent strength in Virginia's HC&SA sector has helped to increase the 12-month moving average in the level change of HC&SA employment for the third consecutive month. After reaching its lowest value in more than a decade, the 12-month moving average in the level change of HC&SA employment has increased by more than 50% since October 2013 to 591.7 monthly jobs.

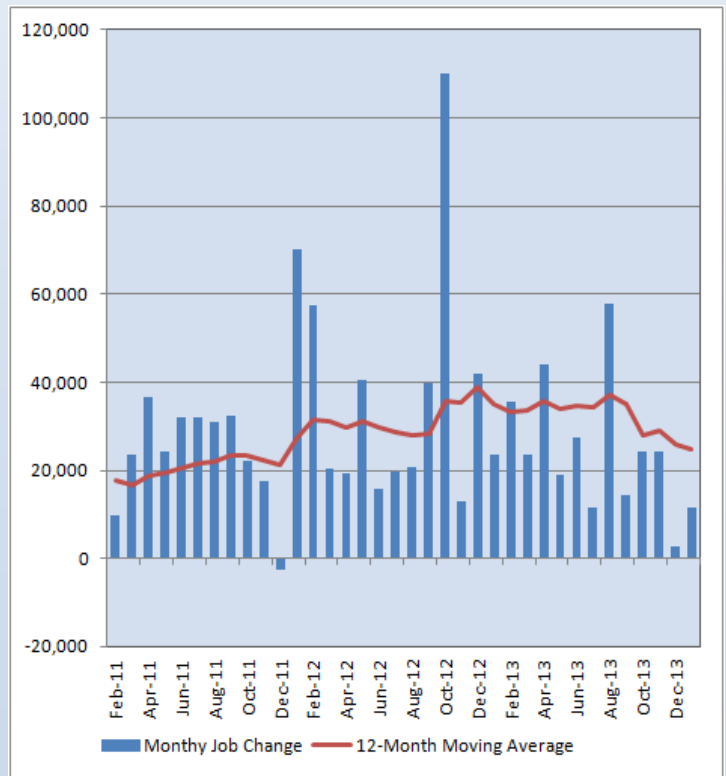
National HC&SA Employment

According to preliminary estimates, the national HC&SA sector added 11,400 jobs in January. In addition, final revisions to December's employment estimates indicate that total HC&SA payroll increased by 2,600 jobs, reversing preliminary indications of a net decrease in national HC&SA employment for the final month of 2013.

Virginia's recent strong employment growth in the HC&SA sector is all the more impressive when considering the relative weakness in the national HC&SA sector. The job gains experienced over each of the past two months in the national HC&SA sector have reached their lowest levels since December 2011, when 2,700 HC&SA jobs were lost.

These declining growth trends can be explained in part by employment weakness in the national economy. In January, total nonfarm payroll across the county increased by only 129,000, although this was an improvement relative to the 84,000 jobs added in December 2013. Regardless, the 12-month HC&SA employment growth rate is equal to the overall national employment growth rate of 1.7%, which also represents the 12-month employment growth rate in Virginia's HC&SA sector.

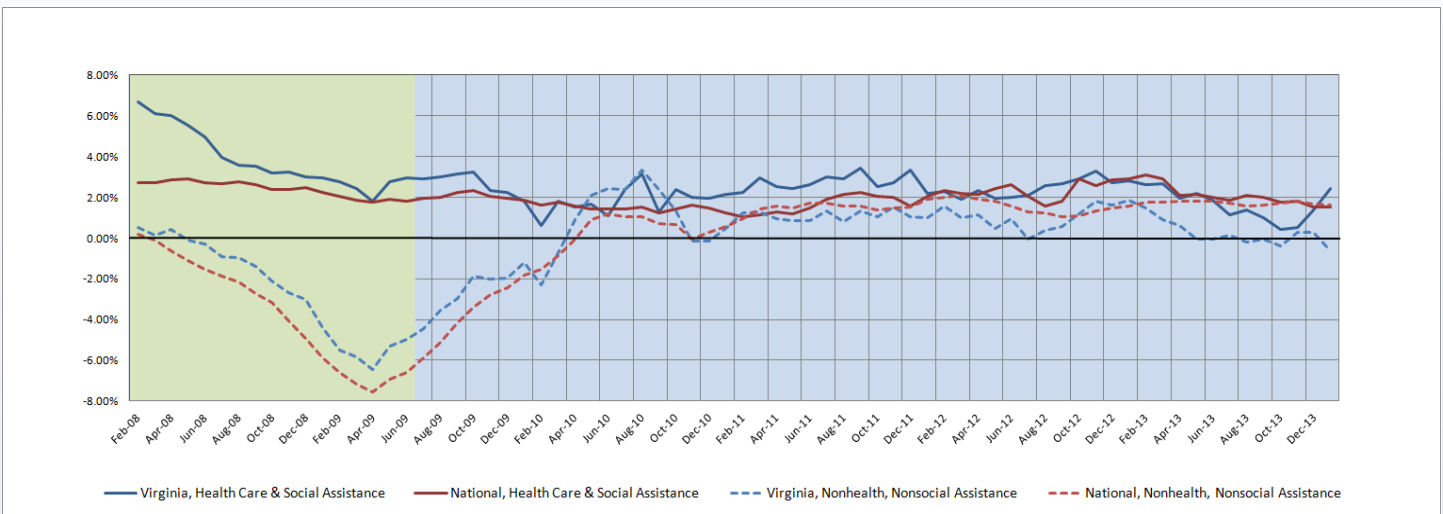
Figure 2: Monthly Change in Employment in National Health Care & Social Assistance Sector, Seasonally Adjusted.



Employment Growth

The annual BLS adjustments had the effect of significantly lowering the six-month moving average of Virginia’s HC&SA employment growth in January. Including December’s preliminary estimate, the six-month moving average of Virginia’s HC&SA employment growth reached 4.2%, but the corresponding number for January is just 2.4%. Regardless, the six-month moving average of HC&SA employment growth has still rebounded strongly over the past several months after reaching a 13-year low of just 0.4% in October 2013. This resurgence comes at the same time as the six-month moving average of Virginia’s non-HC&SA employment growth has stagnated. In fact, the six-month moving average of Virginia’s non-HC&SA employment growth fell to -0.6% in January, its lowest value in nearly four years.

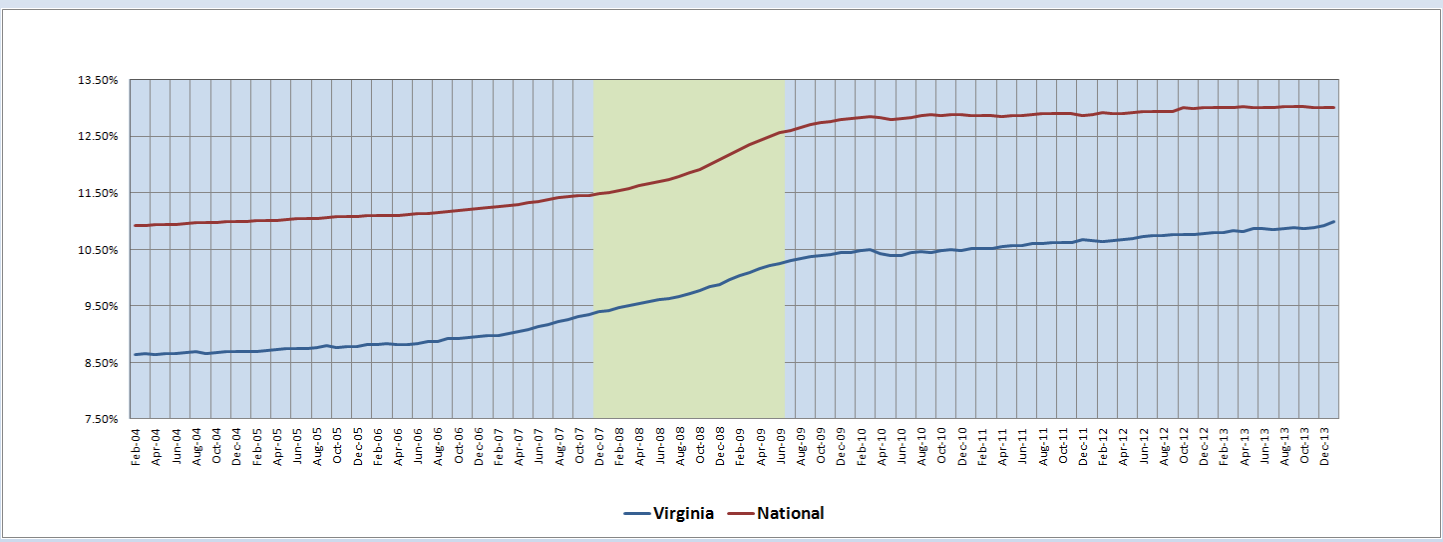
Figure 3: Six-Month Moving Average, Employment Growth, Seasonally Adjusted



HC&SA Employment Share

At the end of the most recent recession in July 2009, the share of Virginia’s total nonfarm payroll that was attributable to its HC&SA sector was 10.3%, which represented a high not seen since at least January 1990. In the four and a half years since then, Virginia’s HC&SA employment share has continued to drift steadily upward. In January, Virginia’s HC&SA employment share increased to yet another high of 11.0%. Meanwhile, the national HC&SA employment share has stagnated over the past year, although it still remains higher than the corresponding value for Virginia. In January, the national HC&SA employment share remained steady at 13.0%. This also represents no change from the value observed one year ago.

Figure 4: HC&SA Share of Nonfarm Payroll Employment, Seasonally Adjusted



Healthcare Workforce
Data Center

Perimeter Center
9960 Mayland Drive, Suite 300
Henrico, VA 23233-1463

Phone: (804) 367-2115
Fax: (804) 527-4434
E-mail: hwdc@dhp.virginia.gov

www.dhp.virginia.gov/hwdc/

Virginia Healthcare Workforce Briefs are produced by
Justin Crow, MPA
HWDC Research Analyst
&
Christopher Coyle
HWDC Research Assistant

Follow us on. . .

Tumblr: <http://vahwdc.tumblr.com/>

The Department of Health Professions Healthcare Workforce Data Center works to improve the data collection and measurement of Virginia's healthcare workforce through regular assessment of workforce supply and demand issues among the 80 professions and 350,000 practitioners licensed in Virginia by DHP.

The HWDC collects data on Virginia's licensed health professionals through surveys completed during the online license renewal and application process. Survey results and data may be accessed on our website: www.dhp.virginia.gov/hwdc/.

The HWDC also provides a series of Virginia Healthcare Workforce Briefs based on data collected by the US Department of Labor's Bureau of Labor Statistics and the US Department of Commerce' Bureau of Economic Analysis.

Virginia Healthcare Workforce Briefs:

Series 1: State & National Employment (Monthly)

Series 2: Virginia Regional Employment (Monthly)

Series 3: Income & Compensation (Quarterly)

About the Data

Data in this report is from the US Department of Labor, Bureau of Labor Statistics' Current Employment Statistics program. The CES program surveys about 140,000 businesses and government agencies monthly. Unless otherwise noted, this series uses seasonally-adjusted data that removes seasonal variations related to weather, holidays, weekends, seasons and other predictable variations. This allows us to better examine underlying trends in the labor market. Data from recent months is preliminary and subject to revision in future releases from the CES. Revisions will be reported in future editions of this series. Unless otherwise noted, the CES data presented in this series:

Includes:

- ◆ Data on employed individuals drawing a paycheck (payroll employees).
- ◆ All employees, regardless of role, occupation or hours worked.
- ◆ HC&SA employees in the private sector only.
- ◆ Persons employed by health professionals in private practice.
- ◆ Both government and private sector workers in nonfarm employment data.

Does not include:

- ◆ Self-employed workers or volunteers, including health professionals in private practice.
 - ◆ HC&SA employees in the public sector. (These are counted as government workers in monthly reports. Approximately 54,500 of Virginia's public sector workers worked in the HC&SA sector in 2010 at the federal, state and local levels).
 - ◆ Information on hours worked or the quality of employment.
 - ◆ Government workers in HC&SA level data. (Government workers, regardless of occupation and role, are classified as public sector employees).
-