



# Virginia Healthcare Workforce Briefs

Indicators from the Bureau of Labor Statistics'  
Current Employment Statistics Survey  
**Series 1: State & National Employment**

Series 1, Issue 30

July 2014

## Highlights

- ◆ According to preliminary estimates, Virginia's Health Care & Social Assistance (HC&SA) sector lost 500 jobs in June. Through the first half of 2014, Virginia's HC&SA sector has added 3,000 jobs to the state's economy.
- ◆ May's preliminary employment estimate for Virginia's HC&SA sector was revised downward by 700 jobs. After this revision, Virginia's HC&SA sector still added 1,300 jobs in May.
- ◆ Virginia's total nonfarm payroll increased by 4,100 in June, its second best month so far in 2014. With June's strong employment gains, Virginia is now experiencing positive year-to-date job growth.
- ◆ The HC&SA sector provides 11% of the Commonwealths payroll jobs, up from 8.67% ten years ago.
- ◆ The national economy continued its recent string of strong employment gains in June. Total nonfarm payroll across the country increased by 288,000, which represents the second-best month of nationwide job gains in more than two years. The national HC&SA sector contributed positively to these gains, adding 33,700 jobs during the month.

### Inside this Brief:

Virginia HC&SA Employment	2
National HC&SA Employment	2
Employment Growth	3
Employment Share	3
About the Data	4

Data in the report is seasonally adjusted, and includes employees of private firms only. Self-employed persons, including health professionals in private practice, are not included.

## Data in Brief

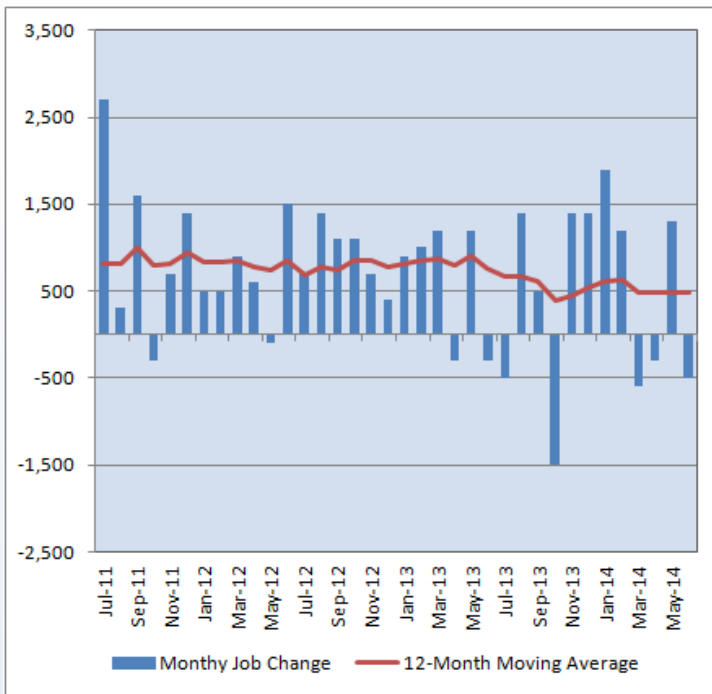
Seasonally Adjusted*	Employment, in Thousands				Growth Rate, Annualized		
	June 2013	Mar. 2014	May 2014	June 2014	12 Month	3 Month	1 Month
<b>Nonfarm, Total</b>							
Virginia	3,761.4	3,765.1	3,765.9	3,770.0	0.2%	0.5%	1.3%
National	136,285.0	137,964.0	138,492.0	138,780.0	1.8%	2.4%	2.5%
<b>Health &amp; Social Assistance</b>							
Virginia	408.8	414.0	415.0	414.5	1.4%	0.5%	-1.4%
National	17,741.3	17,946.8	18,031.9	18,065.6	1.8%	2.7%	2.3%
<b>All Other Nonfarm</b>							
Virginia	3,352.6	3,351.1	3,350.9	3,355.5	0.1%	0.5%	1.7%
National	118,543.7	120,017.2	120,460.1	120,714.4	1.8%	2.3%	2.6%

Preliminary estimates are italicized

\*Seasonally adjusted data is adjusted by the Bureau of Labor Statistics to account for weather, holidays and other seasonal changes. Economists use seasonally adjusted data to reveal underlying trends over time. This series uses seasonally adjusted data exclusively. When comparing data in this series to other HWDC series, or publications from other sources, it is important to note whether the data reported has been seasonally adjusted.

## Virginia HC&SA Employment

**Figure 1: Monthly Change in Employment in Virginia’s Health Care & Social Assistance Sector, Seasonally Adjusted.**



According to preliminary data released on July 18, 2014 by the U.S. Department of Labor, Bureau of Labor Statistics, Virginia’s HC&SA sector had a down month in June, losing 500 jobs across the state. Meanwhile, May’s preliminary estimate for Virginia’s HC&SA employment was revised downward by 700 jobs, although the sector still managed to add 1,300 jobs during the month.

Although Virginia’s HC&SA sector has now lost jobs in three of the past four months, it has still remained a bright spot in what has otherwise been a weak year for statewide employment growth. So far in 2014, Virginia’s HC&SA sector has added 3,000 jobs. Although this is down from the 3,700 jobs that were added through the first half of 2013, Virginia’s economy would still be suffering from year-to-date job losses today in the absence of these gains.

However, June’s job losses did drop the 12-month moving average of the level change in Virginia’s HC&SA employment to 475 monthly jobs added. This represents the lowest value for the moving average since last November.

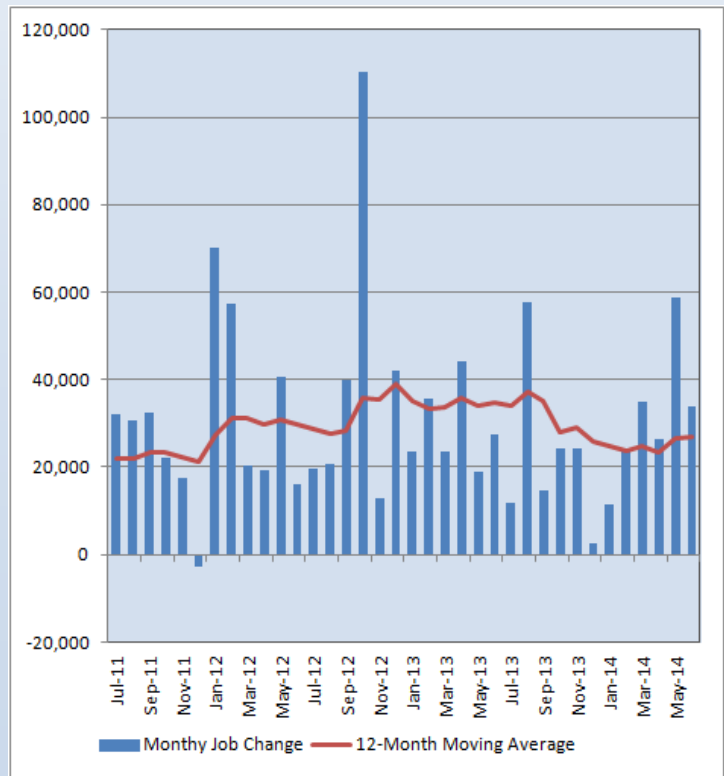
## National HC&SA Employment

According to preliminary estimates, the national HC&SA sector added 33,700 jobs in June. Although this is down from the 58,800 HC&SA jobs that were added nationwide in May, it nevertheless provides further evidence of continued employment strength in the sector.

Thanks to June’s employment gains, the 12-month moving average of the level change in nationwide HC&SA employment reached 27,025 monthly jobs added, which represents its highest value since November 2013. In addition, over the past three months, employment in the national HC&SA sector has grown at a 2.7% annualized rate. This far exceeds the 0.5% annualized rate for Virginia’s HC&SA sector during the same time period.

During the first half of 2014, the national HC&SA sector has added 188,900 jobs, which represents a slight improvement relative to last year’s gain of 172,700 jobs. A strong HC&SA sector has helped to initiate a resurgence in overall employment growth across the country. With the addition of 288,000 jobs in June, total nonfarm payroll has increased by 1,385,000 so far in 2014, which represents the best first half to a new year since 1999.

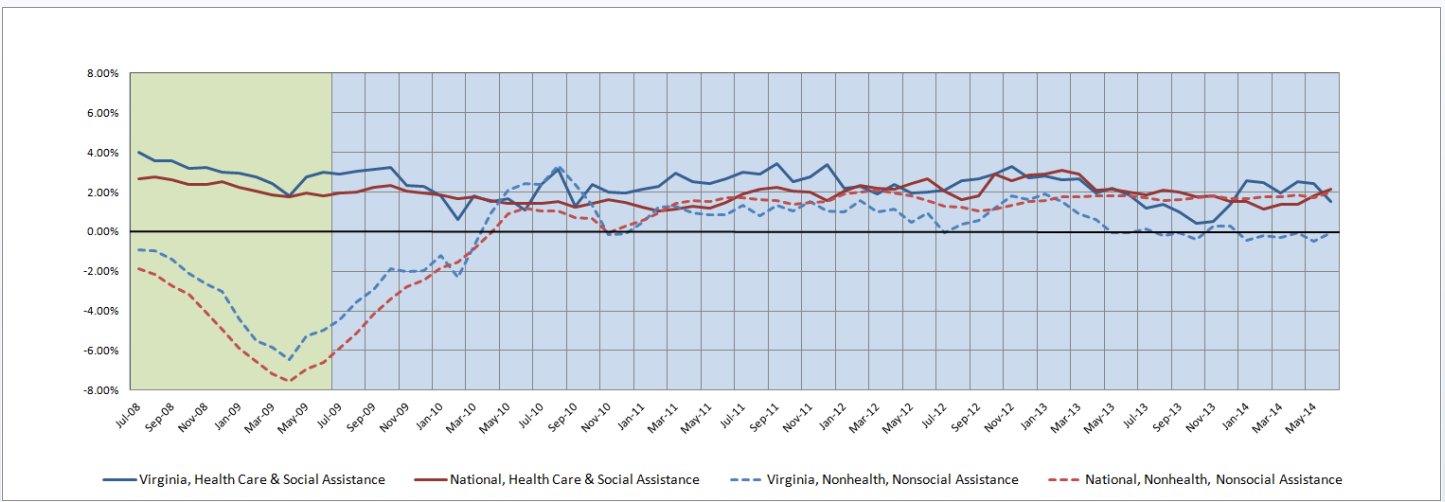
**Figure 2: Monthly Change in Employment in National Health Care & Social Assistance Sector, Seasonally Adjusted.**



### Employment Growth

In June, the six-month moving average of the employment growth rate in Virginia’s HC&SA sector reached a six-month low of 1.5%. This also represents the first time in the past six months in which the six-month moving average of the employment growth rate in the national HC&SA sector exceeded the corresponding rate for Virginia’s HC&SA sector. In fact, the six-month national HC&SA employment growth rate moving average reached 2.1% in June, its highest value in more than one year. Even more impressively, the six-month moving average of the national employment growth rate in total nonfarm payroll exceeded 2.0% for the first time in more than two years. Meanwhile, Virginia’s total nonfarm payroll continued to struggle; its six-month employment growth rate moving average remained negative for the sixth consecutive month.

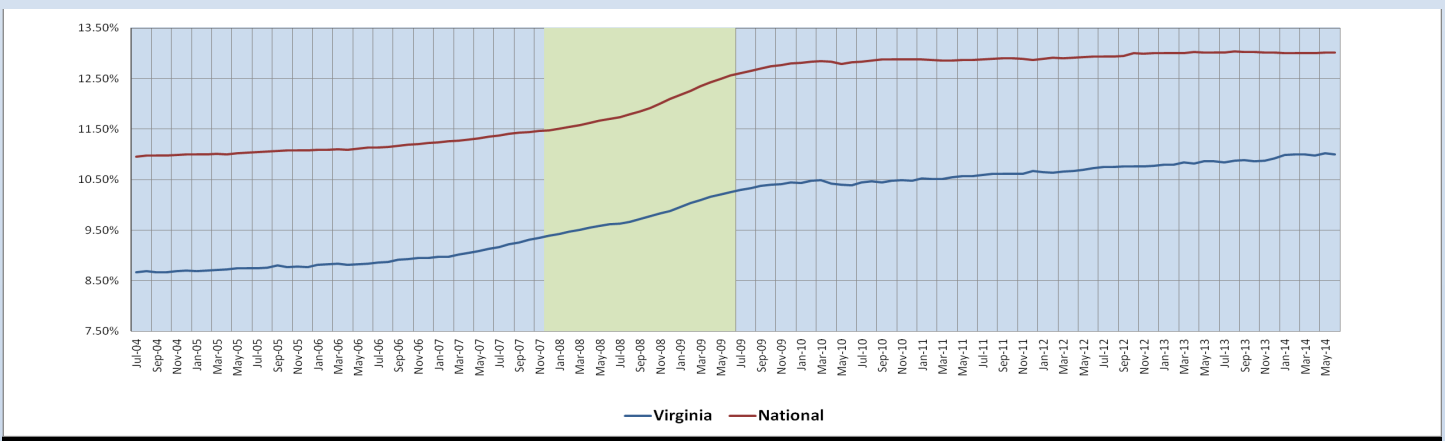
**Figure 3: Six-Month Moving Average, Employment Growth, Seasonally Adjusted**



### HC & SA Share of Employment

In the past couple of decades, the HC&SA sector has proven to be an employment stalwart during hard economic times. The sector tends to gain market share during recessions and—importantly—maintain that share post-recession. Nationally, the HC&SA’s sector share of employment has been stable for almost two years. After first hitting 13.01% share in October of 2012, HC&SA now accounts for 13.02% of all payroll jobs in the country. The situation in Virginia has been somewhat different. As employment in other sectors has lagged post-sequestration, the HC&SA has continued to gain employment share, albeit more slowly than during the height of the recession. The situation has stabilize more recently though. Virginia’s HC&SA sector has commanded about 11% of jobs in the state since first passing the 11% threshold in February. It remains to be seen if this stability will continue. Nevertheless, the employment share gains of the HC&SA sector are impressive. A mere ten years ago, Virginia’s HC&SA sector accounted for only 8.67% of the Commonwealth’s jobs.

**Figure 4: HC&SA Sector Share of Employment, Seasonally Adjusted**



Healthcare Workforce  
Data Center

Perimeter Center  
9960 Mayland Drive, Suite 300  
Henrico, VA 23233-1463

Phone: (804) 367-2115  
Fax: (804) 527-4434  
E-mail: [hwdc@dhp.virginia.gov](mailto:hwdc@dhp.virginia.gov)

[www.dhp.virginia.gov/hwdc/](http://www.dhp.virginia.gov/hwdc/)

*Virginia Healthcare Workforce Briefs are produced by*  
**Justin Crow, MPA**  
*HWDC Research Analyst*  
&  
**Christopher Coyle**  
*HWDC Research Assistant*

Follow us on. . .

Tumblr: <http://vahwdc.tumblr.com/>

The Department of Health Professions Healthcare Workforce Data Center works to improve the data collection and measurement of Virginia's healthcare workforce through regular assessment of workforce supply and demand issues among the 80 professions and 350,000 practitioners licensed in Virginia by DHP.

The HWDC collects data on Virginia's licensed health professionals through surveys completed during the online license renewal and application process. Survey results and data may be accessed on our website: [www.dhp.virginia.gov/hwdc/](http://www.dhp.virginia.gov/hwdc/).

The HWDC also provides a series of Virginia Healthcare Workforce Briefs based on data collected by the US Department of Labor's Bureau of Labor Statistics and the US Department of Commerce' Bureau of Economic Analysis.

Virginia Healthcare Workforce Briefs:

Series 1: State & National Employment (Monthly)

Series 2: Virginia Regional Employment (Monthly)

Series 3: Income & Compensation (Quarterly)

---

## About the Data

Data in this report is from the US Department of Labor, Bureau of Labor Statistics' Current Employment Statistics program. The CES program surveys about 140,000 businesses and government agencies monthly. Unless otherwise noted, this series uses seasonally-adjusted data that removes seasonal variations related to weather, holidays, weekends, seasons and other predictable variations. This allows us to better examine underlying trends in the labor market. Data from recent months is preliminary and subject to revision in future releases from the CES. Revisions will be reported in future editions of this series. Unless otherwise noted, the CES data presented in this series:

### Includes:

- ◆ Data on employed individuals drawing a paycheck (payroll employees).
- ◆ All employees, regardless of role, occupation or hours worked.
- ◆ HC&SA employees in the private sector only.
- ◆ Persons employed by health professionals in private practice.
- ◆ Both government and private sector workers in nonfarm employment data.

### Does not include:

- ◆ Self-employed workers or volunteers, including health professionals in private practice.
  - ◆ HC&SA employees in the public sector. (These are counted as government workers in monthly reports. Approximately 54,500 of Virginia's public sector workers worked in the HC&SA sector in 2010 at the federal, state and local levels).
  - ◆ Information on hours worked or the quality of employment.
  - ◆ Government workers in HC&SA level data. (Government workers, regardless of occupation and role, are classified as public sector employees).
-