



Virginia Healthcare Workforce Briefs

Indicators from the Bureau of Labor Statistics'
Current Employment Statistics Survey
Series 1: State & National Employment

Series 1, Issue 29

June 2014

Inside this Brief:

Virginia HC&SA Employment	2
National HC&SA Employment	2
Employment Growth	3
Long-Term Job Growth	3
About the Data	4

Data in the report is seasonally adjusted, and includes employees of private firms only. Self-employed persons, including health professionals in private practice, are not included.

Highlights

- ◆ According to preliminary estimates, Virginia's Health Care & Social Assistance (HC&SA) sector produced 2,000 jobs in May. This represents the best monthly performance for the sector in nearly three years.
- ◆ April's preliminary estimate for Virginia's HC&SA employment was revised upward by 200 jobs. Even with this revision, however, Virginia's HC&SA sector still lost 300 jobs in April.
- ◆ Virginia's total nonfarm payroll employment experienced continued weakness in May, with a decline of 1,100 jobs during the month. Through the first five months of 2014, Virginia's total nonfarm economy has lost 2,300 jobs.
- ◆ However, April's preliminary estimate for Virginia's total nonfarm payroll employment was revised upward by 2,300. With this revision, Virginia's economy gained 2,100 jobs in April.
- ◆ In May, the national economy experienced its fourth consecutive month of employment gains in excess of 200,000 jobs. This job growth was buoyed by gains in the national HC&SA sector, which contributed 54,900 jobs during the month, its best monthly performance since August 2013.

Data in Brief

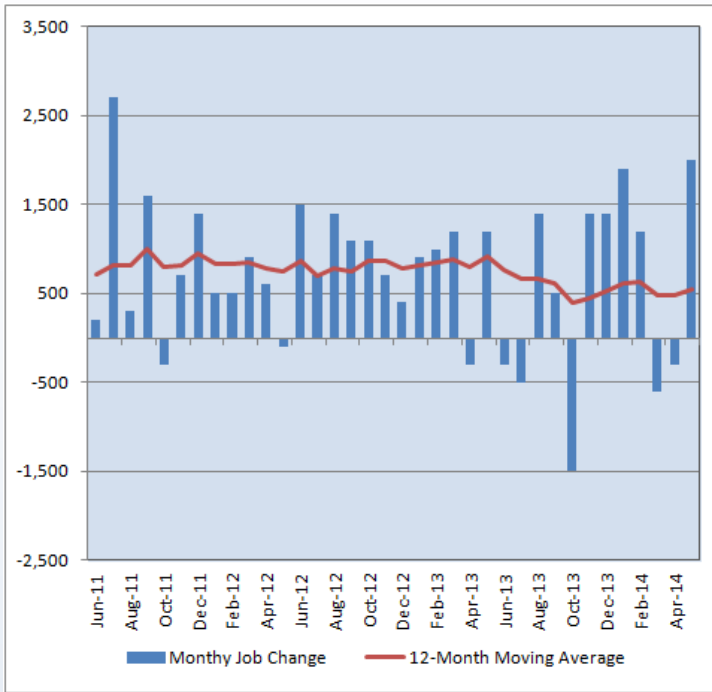
Seasonally Adjusted*	Employment, in Thousands				Growth Rate, Annualized		
	May 2013	Feb. 2014	Apr. 2014	May 2014	12 Month	3 Month	1 Month
Nonfarm, Total							
Virginia	3,763.6	3,769.9	3,767.2	3,766.1	0.1%	-0.4%	-0.3%
National	136,084.0	137,761.0	138,246.0	138,463.0	1.7%	2.1%	1.9%
Health & Social Assistance							
Virginia	409.1	414.6	413.7	415.7	1.6%	1.1%	6.0%
National	17,714.0	17,911.9	19,975.3	18,030.2	1.8%	2.7%	3.7%
All Other Nonfarm							
Virginia	3,354.5	3,355.3	3,353.5	3,350.4	-0.1%	-0.6%	-1.1%
National	118,370.0	119,849.1	120,270.7	120,432.8	1.7%	2.0%	1.6%

Preliminary estimates are italicized

*Seasonally adjusted data is adjusted by the Bureau of Labor Statistics to account for weather, holidays and other seasonal changes. Economists use seasonally adjusted data to reveal underlying trends over time. This series uses seasonally adjusted data exclusively. When comparing data in this series to other HWDC series, or publications from other sources, it is important to note whether the data reported has been seasonally adjusted.

Virginia HC&SA Employment

Figure 1: Monthly Change in Employment in Virginia’s Health Care & Social Assistance Sector, Seasonally Adjusted.



According to preliminary data released on June 20, 2014 by the U.S. Department of Labor, Bureau of Labor Statistics, Virginia’s HC&SA sector had a very strong month in May, adding 2,000 jobs to the state’s economy. Meanwhile, April’s preliminary estimate for HC&SA employment was revised upward by 200 jobs, although the sector still lost 300 jobs during the month.

May’s employment gains represent the best one-month performance for Virginia’s HC&SA sector since July 2011, when 2,700 jobs were created. Thanks in part to this strong employment growth in May, Virginia’s HC&SA sector has had a strong start to 2014, adding 4,200 jobs through the first five months of 2014.

The 12-month moving average in the level change in HC&SA employment jumped from 483 monthly jobs added in April to 550 monthly jobs added in May. However, this still remains below the year-to-date high of 633 monthly jobs added in February and well below the highs reached in the first half of 2013.

National HC&SA Employment

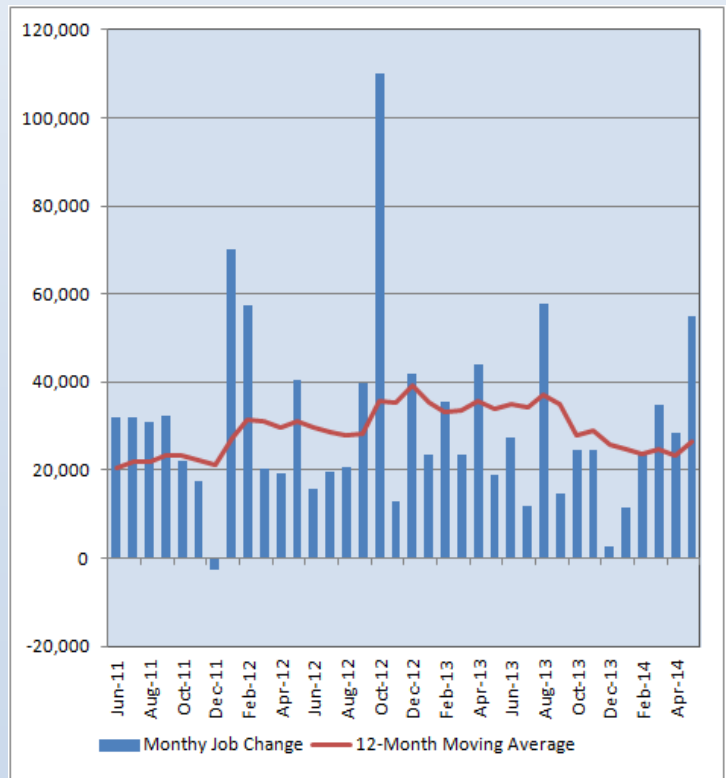
According to preliminary estimates, the national HC&SA sector added 54,900 jobs in May, which represents its best monthly performance so far in 2014. Year-to-date, the national HC&SA sector has seen employment increase by 153,500 jobs.

Thanks to this recent surge of national HC&SA employment relative to the weakness experienced at the beginning of the year, the 12-month moving average of the level change in national HC&SA employment rebounded strongly during the month, increasing from 23,350 monthly jobs in April, a two-and-a-half year low, to 26,350 monthly jobs in May.

The national HC&SA sector has helped to drive employment gains in the overall economy. In May, total nonfarm payroll increased by 217,000, which represents the fourth consecutive month in which the national economy experienced employment gains in excess of 200,000.

So far in 2014, the national economy has added more than 1 million jobs. Unfortunately, Virginia has not yet benefited from this nationwide employment growth, given that total nonfarm employment in the state has fallen by 2,300 through the first five months of the new year.

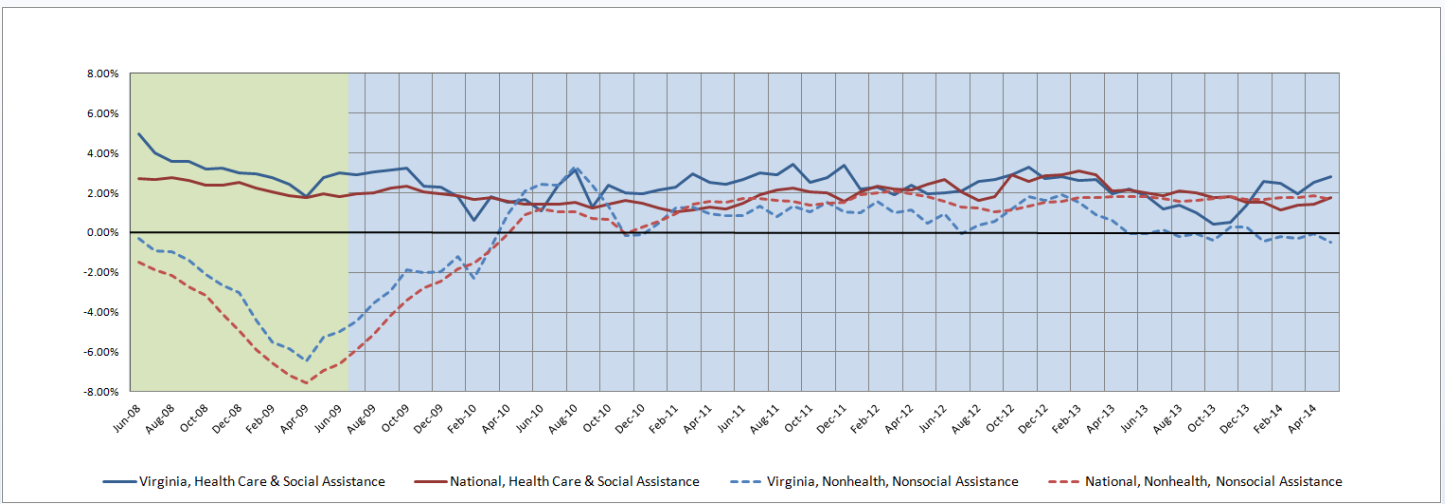
Figure 2: Monthly Change in Employment in National Health Care & Social Assistance Sector, Seasonally Adjusted.



Employment Growth

With May’s strong employment gains, the six-month moving average of the employment growth rate in Virginia’s HC&SA sector has reached 2.8%, its highest value since January 2013. This has occurred at a time when the six-month moving average of the employment growth rate in Virginia’s non-HC&SA sectors has continued to stagnate, remaining in negative territory for the fifth consecutive month. In fact, this six-month moving average reached -0.5% in May, its lowest value in more than four years. Meanwhile, the six-month moving average of the national HC&SA employment growth rate increased to a six-month high of 1.8% in May, while the comparable moving average for the nation’s non-HC&SA sectors dropped slightly during the month from 1.8% to 1.7%.

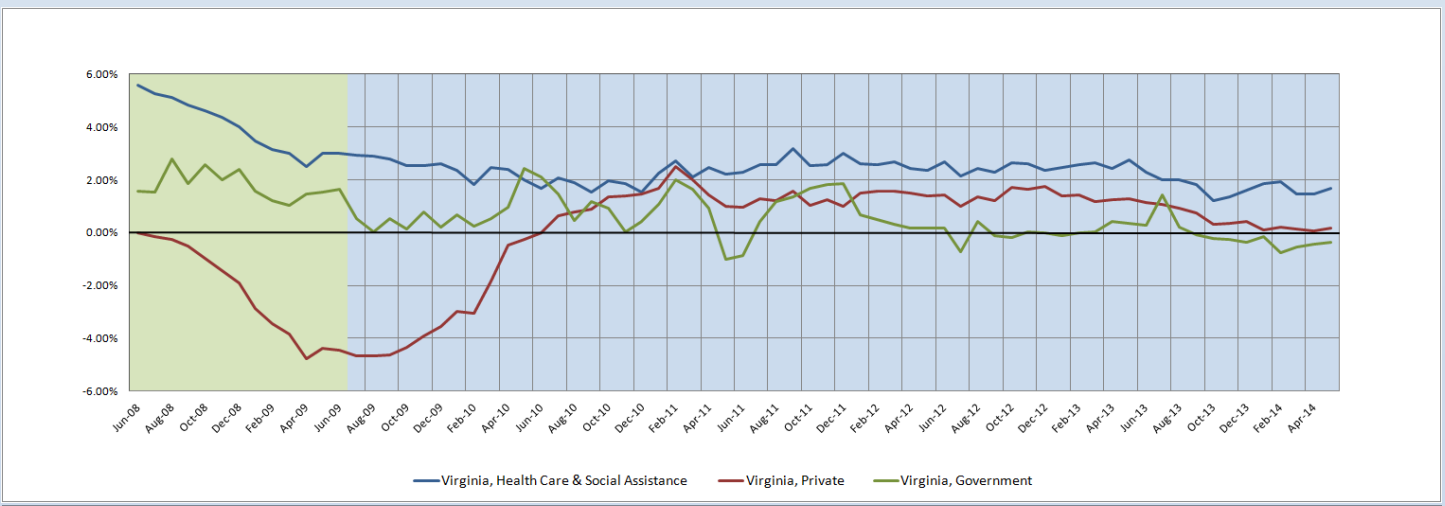
Figure 3: Six-Month Moving Average, Employment Growth, Seasonally Adjusted



Long-Term Employment Growth

In May, the 12-month moving average of the employment growth rate in Virginia’s HC&SA sector increased from 1.5% to 1.7%. Relative to the rest of the state’s economy, Virginia’s HC&SA sector has been a significant contributor to employment growth in the state. Indeed, employment in both Virginia’s private and government sectors has seen little growth over the previous 12 months. The 12-month moving average of the employment growth rate in Virginia’s private sector did experience an increase from 0.1% in April, its lowest value in nearly four years, to 0.2% in May. The 12-month moving average of employment growth in Virginia’s government sector also saw a modest increase. Regardless, long-term employment growth in this sector has remained in negative territory for nine consecutive month.

Figure 4: Twelve-Month Moving Average, Employment Growth, Seasonally Adjusted



Healthcare Workforce
Data Center

Perimeter Center
9960 Mayland Drive, Suite 300
Henrico, VA 23233-1463

Phone: (804) 367-2115
Fax: (804) 527-4434
E-mail: hwdc@dhp.virginia.gov

www.dhp.virginia.gov/hwdc/

Virginia Healthcare Workforce Briefs are produced by
Justin Crow, MPA
HWDC Research Analyst
&
Christopher Coyle
HWDC Research Assistant

Follow us on. . .

Tumblr: <http://vahwdc.tumblr.com/>

The Department of Health Professions Healthcare Workforce Data Center works to improve the data collection and measurement of Virginia's healthcare workforce through regular assessment of workforce supply and demand issues among the 80 professions and 350,000 practitioners licensed in Virginia by DHP.

The HWDC collects data on Virginia's licensed health professionals through surveys completed during the online license renewal and application process. Survey results and data may be accessed on our website: www.dhp.virginia.gov/hwdc/.

The HWDC also provides a series of Virginia Healthcare Workforce Briefs based on data collected by the US Department of Labor's Bureau of Labor Statistics and the US Department of Commerce' Bureau of Economic Analysis.

Virginia Healthcare Workforce Briefs:

Series 1: State & National Employment (Monthly)

Series 2: Virginia Regional Employment (Monthly)

Series 3: Income & Compensation (Quarterly)

About the Data

Data in this report is from the US Department of Labor, Bureau of Labor Statistics' Current Employment Statistics program. The CES program surveys about 140,000 businesses and government agencies monthly. Unless otherwise noted, this series uses seasonally-adjusted data that removes seasonal variations related to weather, holidays, weekends, seasons and other predictable variations. This allows us to better examine underlying trends in the labor market. Data from recent months is preliminary and subject to revision in future releases from the CES. Revisions will be reported in future editions of this series. Unless otherwise noted, the CES data presented in this series:

Includes:

- ◆ Data on employed individuals drawing a paycheck (payroll employees).
- ◆ All employees, regardless of role, occupation or hours worked.
- ◆ HC&SA employees in the private sector only.
- ◆ Persons employed by health professionals in private practice.
- ◆ Both government and private sector workers in nonfarm employment data.

Does not include:

- ◆ Self-employed workers or volunteers, including health professionals in private practice.
 - ◆ HC&SA employees in the public sector. (These are counted as government workers in monthly reports. Approximately 54,500 of Virginia's public sector workers worked in the HC&SA sector in 2010 at the federal, state and local levels).
 - ◆ Information on hours worked or the quality of employment.
 - ◆ Government workers in HC&SA level data. (Government workers, regardless of occupation and role, are classified as public sector employees).
-