



Virginia Healthcare Workforce Briefs

Indicators from the Bureau of Labor Statistics'
Current Employment Statistics Survey
Series 1: State & National Employment

Series 1, Issue 28

May 2014

Highlights

- ◆ According to preliminary estimates, Virginia's Health Care & Social Assistance (HC&SA) sector lost 500 jobs in April. This represents a one-month annualized growth rate of -1.4%.
- ◆ March's preliminary estimate for Virginia's HC&SA employment was revised downward by 700 jobs. With this revision, Virginia lost 600 HC&SA jobs in March.
- ◆ Virginia's total nonfarm payroll fell by 200 jobs in April. So far in 2014, Virginia's economy has lost 3,500 jobs. In addition, the state has lost jobs in eight of the past 12 months.
- ◆ March's preliminary estimate for Virginia's total nonfarm payroll was revised upward by 300 jobs. Even with this revision, however, Virginia's economy lost 4,800 jobs in March.
- ◆ The national economy added 288,000 jobs in April. Not only does this represent the third consecutive month in which the country has produced more than 200,000 jobs, but it was the best month for national job growth in more than two years. The national HC&SA sector was responsible for 27,900 of those jobs during the month of April.

Inside this Brief:

Virginia HC&SA Employment	2
National HC&SA Employment	2
Employment Growth	3
Long-Term Job Growth	3
About the Data	4

Data in the report is seasonally adjusted, and includes employees of private firms only. Self-employed persons, including health professionals in private practice, are not included.

Data in Brief

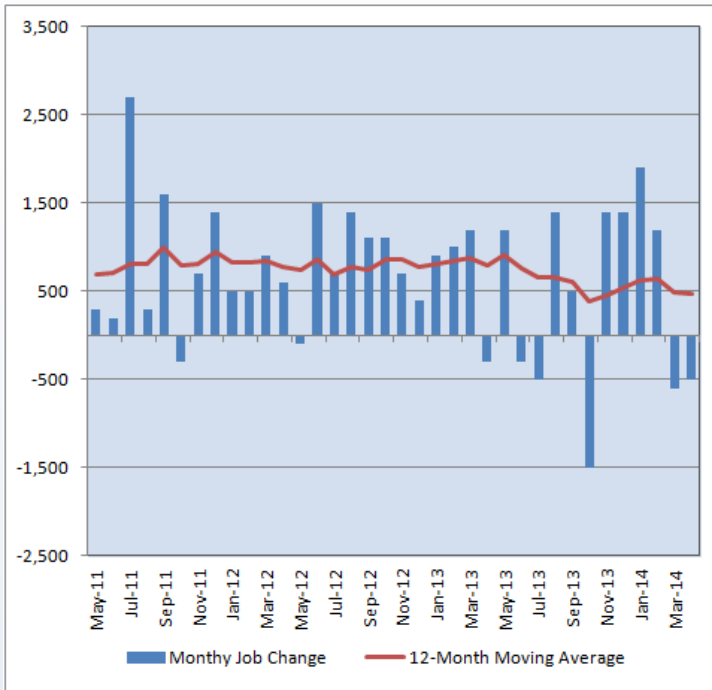
Seasonally Adjusted*	Employment, in Thousands				Growth Rate, Annualized		
	Apr. 2013	Jan. 2014	Mar. 2014	Apr. 2014	12 Month	3 Month	1 Month
Nonfarm, Total							
Virginia	3,769.4	3,762.4	3,765.1	3,764.9	-0.1%	0.3%	-0.1%
National	135,885.0	137,539.0	137,964.0	138,252.0	1.7%	2.1%	2.5%
Health & Social Assistance							
Virginia	407.9	413.4	414.0	413.5	1.4%	0.1%	-1.4%
National	17,695.1	17,888.1	17,942.9	17,970.8	1.6%	1.9%	1.9%
All Other Nonfarm							
Virginia	3,361.5	3,349.0	3,351.1	3,351.4	-0.3%	0.3%	0.1%
National	118,189.9	119,650.9	120,021.1	120,281.2	1.8%	2.1%	2.6%

Preliminary estimates are italicized

*Seasonally adjusted data is adjusted by the Bureau of Labor Statistics to account for weather, holidays and other seasonal changes. Economists use seasonally adjusted data to reveal underlying trends over time. This series uses seasonally adjusted data exclusively. When comparing data in this series to other HWDC series, or publications from other sources, it is important to note whether the data reported has been seasonally adjusted.

Virginia HC&SA Employment

Figure 1: Monthly Change in Employment in Virginia’s Health Care & Social Assistance Sector, Seasonally Adjusted.



According to preliminary data released on May 16, 2014 by the U.S. Department of Labor, Bureau of Labor Statistics, Virginia’s HC&SA sector lost 500 jobs in April. Meanwhile, March’s preliminary estimate for HC&SA employment was revised downward by 700 jobs, turning what was an initial gain of 100 jobs into a loss of 600 jobs. Despite the job losses over the past two months, however, Virginia’s HC&SA sector has still added 2,000 jobs to the state’s economy through the first four months of the new year. In addition, employment in Virginia’s HC&SA sector has grown by 1.4% over the previous 12 months, while overall employment in the state has actually decreased in the past year.

Given this month’s employment losses, the 12-month moving average of the level change in HC&SA employment fell from 483 monthly jobs in March to 467 monthly jobs in April. This represents the lowest value for the 12-month moving average of the level change in HC&SA employment since last November. In addition, this 12-month moving average has fallen by 42% over the past year.

National HC&SA Employment

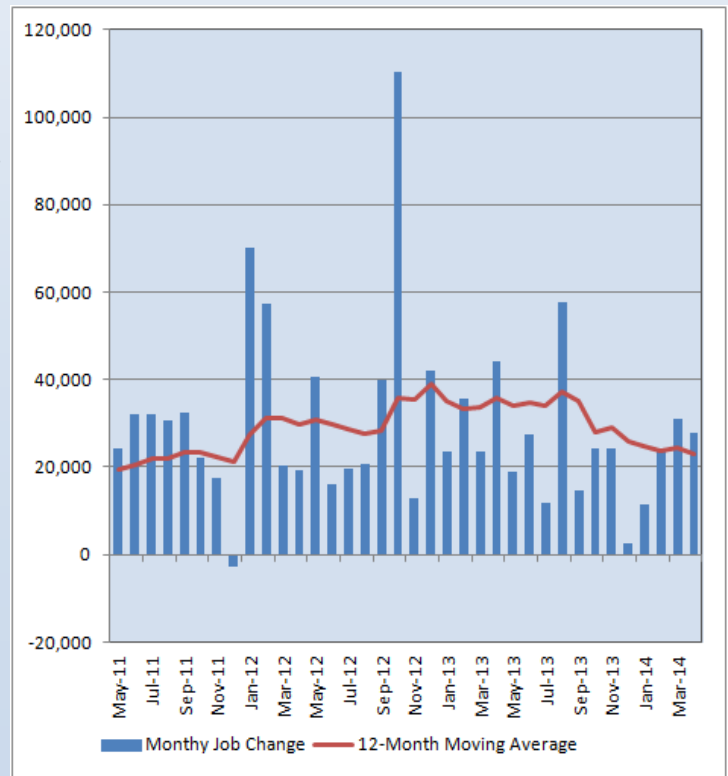
According to preliminary estimates, the national HC&SA sector added 27,900 jobs in April. After adding a total of just 14,000 jobs between December 2013 and January 2014, the national HC&SA sector has now produced in excess of 20,000 jobs in each of the past three months.

These trends mirror the overall national economy, which has seen a very strong uptick in employment in recent months. For instance, the national economy added 288,000 jobs to total nonfarm payroll in April, its best monthly performance since January 2012.

Regardless, the national HC&SA sector has still been experiencing a slowdown in employment growth. So far in 2014, the national HC&SA sector has added 94,100 jobs. At the same point in 2013, the sector had added 126,500, while 167,200 jobs were added through the first four months of 2012.

This slowdown can also be seen through the downward trend in the 12-month moving average of the level change in national HC&SA employment. In April, this moving average fell to 22,975 monthly jobs added, which represents its lowest value since December 2011.

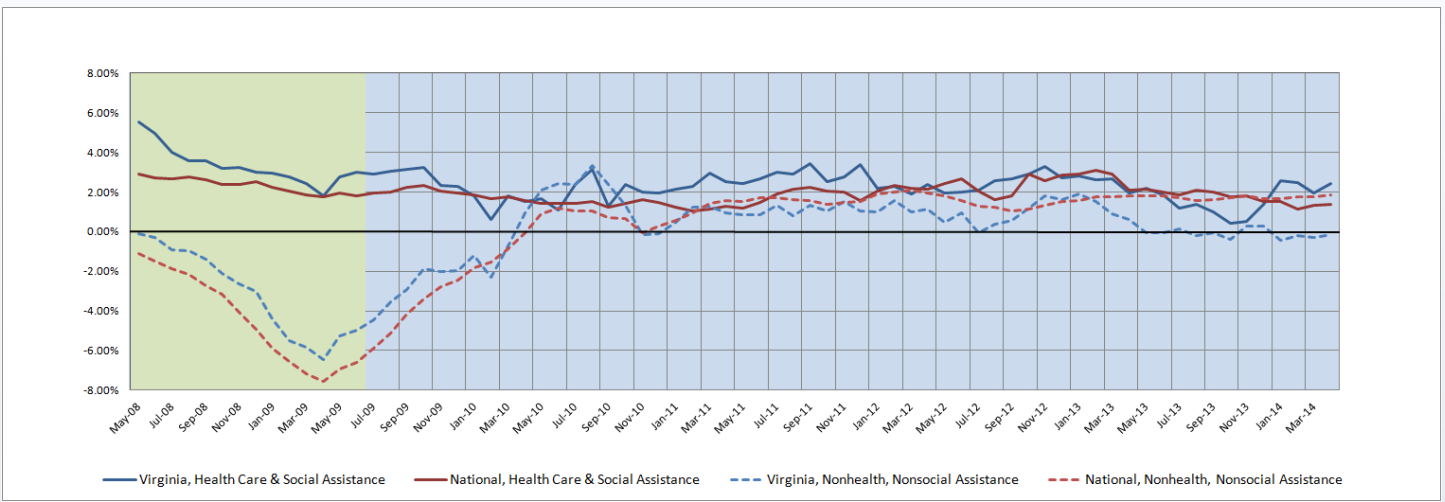
Figure 2: Monthly Change in Employment in National Health Care & Social Assistance Sector, Seasonally Adjusted.



Employment Growth

Virginia’s non-HC&SA sectors continued its moribund employment growth in April. For the fourth consecutive month, the six-month moving average of the employment growth rate in Virginia’s non-HC&SA sectors was negative, although it did improve slightly in April from -0.3% to -0.2% . Alternatively, Virginia’s HC&SA sector has maintained its relative strength, with its six-month employment growth rate moving average reaching 2.4% in April. This trend is in stark contrast to the rest of the country, where the six-month moving average of the employment growth rate in the nation’s non-HC&SA sectors reached 1.9% in April. In fact, with respect to their current six-month employment growth rate moving averages, the national non-HC&SA sectors currently outperform the national HC&SA sector.

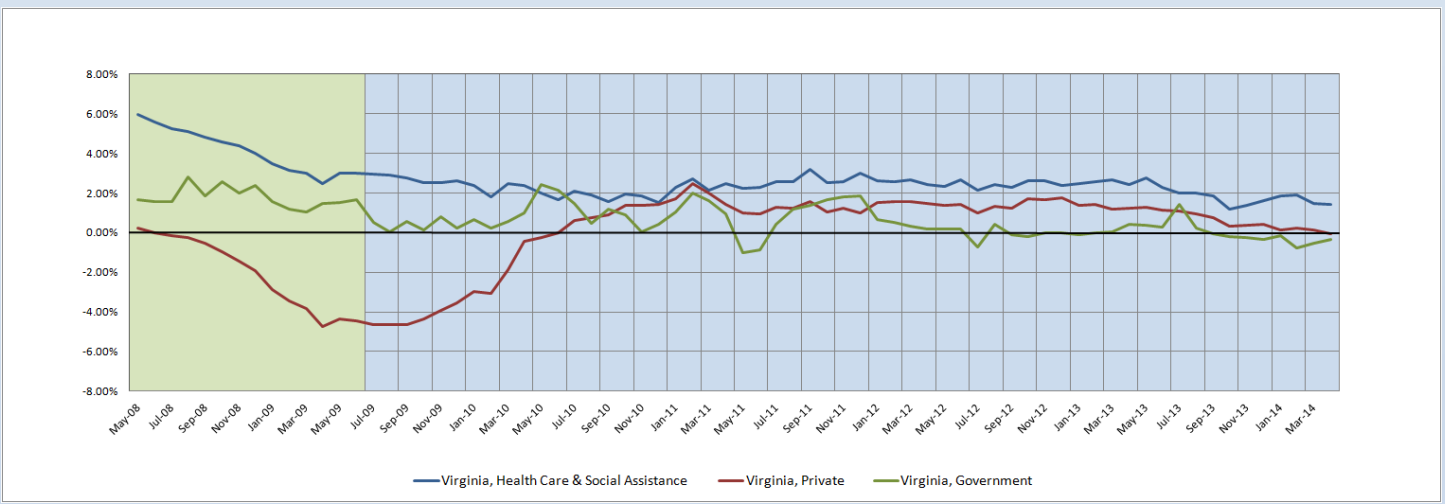
Figure 3: Six-Month Moving Average, Employment Growth, Seasonally Adjusted



Long-Term Employment Growth

Both Virginia’s private and government sectors have seen no employment growth over the previous 12 months. In April, the 12-month moving average of employment growth in Virginia’s private sector fell to -0.1% , which represents the first time this moving average has fallen into negative territory since May 2010. Meanwhile, the 12-month moving average of employment growth in Virginia’s government sector has remained in negative territory for eight consecutive months. Relative to private industry and the state government, Virginia’s HC&SA sector has experienced very strong long-term employment growth, although the 12-month moving average of employment growth in Virginia’s HC&SA sector did fall to a six-month low of 1.4% in April.

Figure 4: Twelve-Month Moving Average, Employment Growth, Seasonally Adjusted



Healthcare Workforce
Data Center

Perimeter Center
9960 Mayland Drive, Suite 300
Henrico, VA 23233-1463

Phone: (804) 367-2115
Fax: (804) 527-4434
E-mail: hwdc@dhp.virginia.gov

www.dhp.virginia.gov/hwdc/

Virginia Healthcare Workforce Briefs are produced by
Justin Crow, MPA
HWDC Research Analyst
&
Christopher Coyle
HWDC Research Assistant

Follow us on. . .

Tumblr: <http://vahwdc.tumblr.com/>

The Department of Health Professions Healthcare Workforce Data Center works to improve the data collection and measurement of Virginia's healthcare workforce through regular assessment of workforce supply and demand issues among the 80 professions and 350,000 practitioners licensed in Virginia by DHP.

The HWDC collects data on Virginia's licensed health professionals through surveys completed during the online license renewal and application process. Survey results and data may be accessed on our website: www.dhp.virginia.gov/hwdc/.

The HWDC also provides a series of Virginia Healthcare Workforce Briefs based on data collected by the US Department of Labor's Bureau of Labor Statistics and the US Department of Commerce' Bureau of Economic Analysis.

Virginia Healthcare Workforce Briefs:

Series 1: State & National Employment (Monthly)

Series 2: Virginia Regional Employment (Monthly)

Series 3: Income & Compensation (Quarterly)

About the Data

Data in this report is from the US Department of Labor, Bureau of Labor Statistics' Current Employment Statistics program. The CES program surveys about 140,000 businesses and government agencies monthly. Unless otherwise noted, this series uses seasonally-adjusted data that removes seasonal variations related to weather, holidays, weekends, seasons and other predictable variations. This allows us to better examine underlying trends in the labor market. Data from recent months is preliminary and subject to revision in future releases from the CES. Revisions will be reported in future editions of this series. Unless otherwise noted, the CES data presented in this series:

Includes:

- ◆ Data on employed individuals drawing a paycheck (payroll employees).
- ◆ All employees, regardless of role, occupation or hours worked.
- ◆ HC&SA employees in the private sector only.
- ◆ Persons employed by health professionals in private practice.
- ◆ Both government and private sector workers in nonfarm employment data.

Does not include:

- ◆ Self-employed workers or volunteers, including health professionals in private practice.
 - ◆ HC&SA employees in the public sector. (These are counted as government workers in monthly reports. Approximately 54,500 of Virginia's public sector workers worked in the HC&SA sector in 2010 at the federal, state and local levels).
 - ◆ Information on hours worked or the quality of employment.
 - ◆ Government workers in HC&SA level data. (Government workers, regardless of occupation and role, are classified as public sector employees).
-