



Virginia Healthcare Workforce Briefs

Indicators from the Bureau of Labor Statistics'
Current Employment Statistics Survey
Series 1: State & National Employment

Series 1, Issue 34

November 2014

Highlights

- ◆ According to preliminary estimates, Virginia's Health Care & Social Assistance (HC&SA) sector added 1,700 jobs during the month of October. This represents the largest monthly employment gain in Virginia's HC&SA sector since January.
- ◆ However, September's preliminary estimate for Virginia's HC&SA employment was revised downward by 600 jobs. After this revision, Virginia's HC&SA sector lost 400 jobs in September.
- ◆ Despite the strong employment gains in Virginia's HC&SA sector, the state's total nonfarm payroll fell for the third consecutive month in October, although the statewide decline amounted to a relatively modest 900 jobs.
- ◆ The national HC&SA sector experienced another solid month of employment gains with the addition of 27,200 jobs to the national economy. So far this year, the national HC&SA sector has created 320,600 jobs.
- ◆ During October, the nation's total nonfarm payroll increased by 214,000. This represents the ninth consecutive month in which the national economy has created more than 200,000 jobs. Furthermore, the national economy has already produced nearly 2.3 million jobs in 2014

Inside this Brief:

Virginia HC&SA Employment	2
National HC&SA Employment	2
Employment Growth	3
Long-Term Job Growth	3
About the Data	4

Data in the report is seasonally adjusted, and includes employees of private firms only. Self-employed persons, including health professionals in private practice, are not included.

Data in Brief

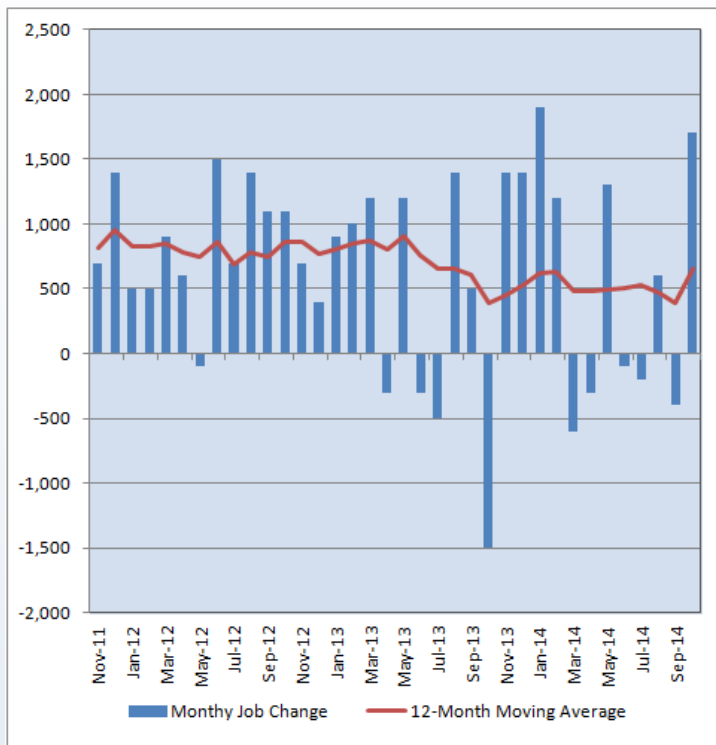
Seasonally Adjusted*	Employment, in Thousands				Growth Rate, Annualized		
	Oct. 2013	July 2014	Sept. 2014	Oct. 2014	12 Month	3 Month	1 Month
Nonfarm, Total							
Virginia	3,763.2	3,788.6	3,776.5	3,775.6	0.3%	-1.4%	-0.3%
National	137,037.0	139,007.0	139,466.0	139,680.0	1.9%	2.0%	1.9%
Health & Social Assistance							
Virginia	408.7	414.7	414.9	416.6	1.9%	1.8%	5.0%
National	17,849.7	18,105.6	18,170.1	18,197.3	1.9%	2.0%	1.8%
All Other Nonfarm							
Virginia	3,354.5	3,373.9	3,361.6	3,359.0	0.1%	-1.8%	-0.9%
National	119,187.3	120,901.4	121,295.9	121,482.7	1.9%	1.9%	1.9%

Preliminary estimates are italicized

*Seasonally adjusted data is adjusted by the Bureau of Labor Statistics to account for weather, holidays and other seasonal changes. Economists use seasonally adjusted data to reveal underlying trends over time. This series uses seasonally adjusted data exclusively. When comparing data in this series to other HWDC series, or publications from other sources, it is important to note whether the data reported has been seasonally adjusted.

Virginia HC&SA Employment

Figure 1: Monthly Change in Employment in Virginia’s Health Care & Social Assistance Sector, Seasonally Adjusted.



According to preliminary data released on Friday, November 21, 2014 by the U.S. Department of Labor, Bureau of Labor Statistics, Virginia’s HC&SA sector enjoyed its strongest month of employment gains since January with the addition of 1,700 jobs to the state’s economy. This represents a healthy one-month annualized growth rate of 5.0% However, September’s preliminary estimate for Virginia’s HC&SA employment was revised downward by 600 jobs, turning what had been a gain of 200 jobs into a loss of 400 jobs during the month.

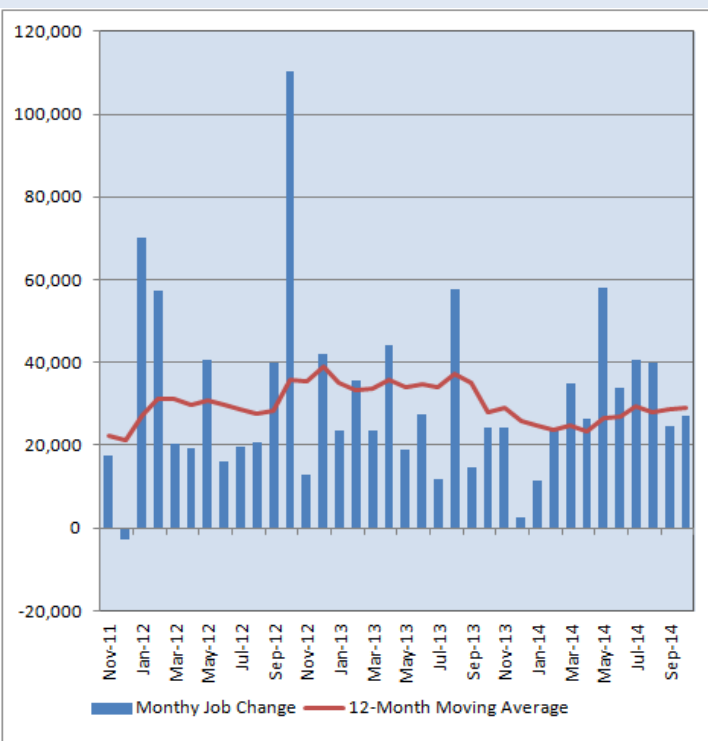
October’s impressive job gains helped to reverse a downward trend in the 12-month moving average of the level change in Virginia’s HC&SA employment. In September, this moving average fell to 392 jobs added per month, its lowest monthly value since October of 2013. However, the 12-month moving average of the level change in Virginia’s HC&SA employment surged to a one-year high of 658 monthly job added in October. Virginia’s HC&SA sector has now created 5,100 jobs so far in 2014, which exceeds the 3,600 year-to-date jobs created in October 2013.

National HC&SA Employment

The national HC&SA sector has enjoyed rather stable employment growth through much of 2014. In October, the national HC&SA sector created 27,200 jobs, which represents a slight uptick from the 24,600 jobs created in September. Meanwhile, the 12-month moving average of the level change in national HC&SA employment grew slightly to 28,967 monthly jobs added in October. Although this is below the year-to-date high of 29,383 jobs added per month in July, it still represents an increase of 17% relative to the beginning of the year.

Over the past 12 months, employment in Virginia’s HC&SA sector has grown at the average national rate of 1.9%. However, unlike Virginia, the national HC&SA sector has been buoyed by the growth in national total nonfarm payroll. In October, total nonfarm payroll grew by 214,000, which represents the ninth consecutive month in which national payroll gains exceeded 200,000. Alternatively, Virginia’s economy experienced its third consecutive month of job losses in October. Virginia’s HC&SA sector is now responsible for more than 70% of all year-to-date employment gains in the state.

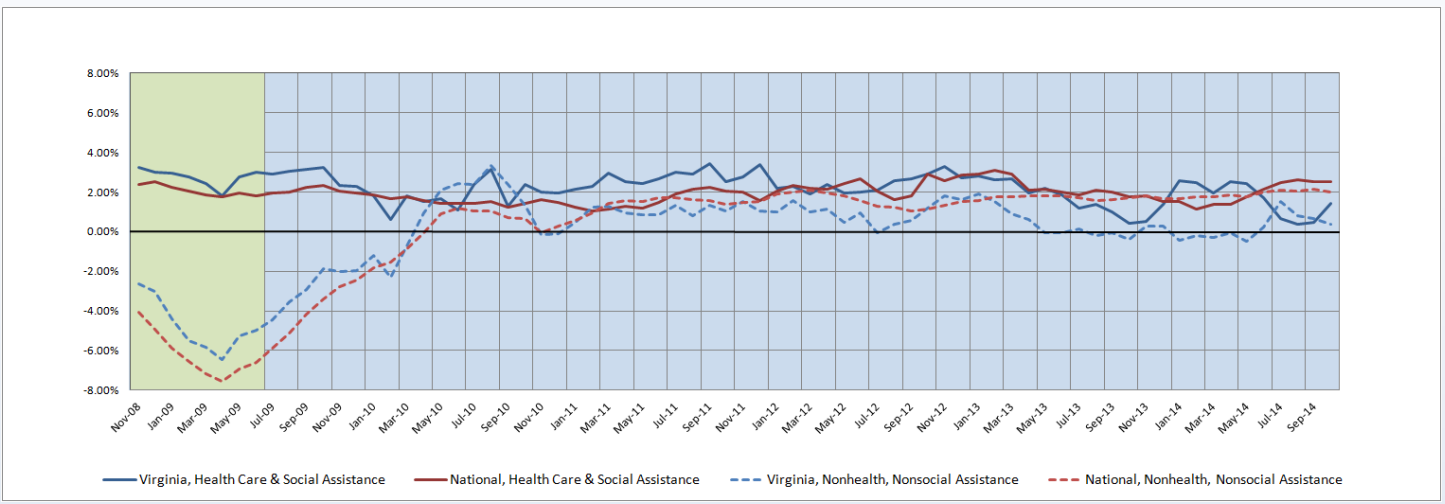
Figure 2: Monthly Change in Employment in National Health Care & Social Assistance Sector, Seasonally Adjusted.



Employment Growth

For the previous three months, Virginia’s six-month HC&SA employment growth rate moving average has been below 1%. Such anemic growth has been a rarity in Virginia’s HC&SA sector; the last time that Virginia’s six-month HC&SA employment growth rate moving average dipped below 1% for three consecutive months was back in 2000. However, the 1,700 HC&SA jobs that were created throughout the state in October helped to boost its six-month employment growth rate back up to 1.4%. Meanwhile, the six-month moving average of the employment growth rate in Virginia’s total nonfarm payroll continued to slide from 0.7% in September to 0.4% in October. This moving average has declined by more than 75% since reaching a year-to-date high of 1.5% in July, although it is still higher than at any time during the first half of the year.

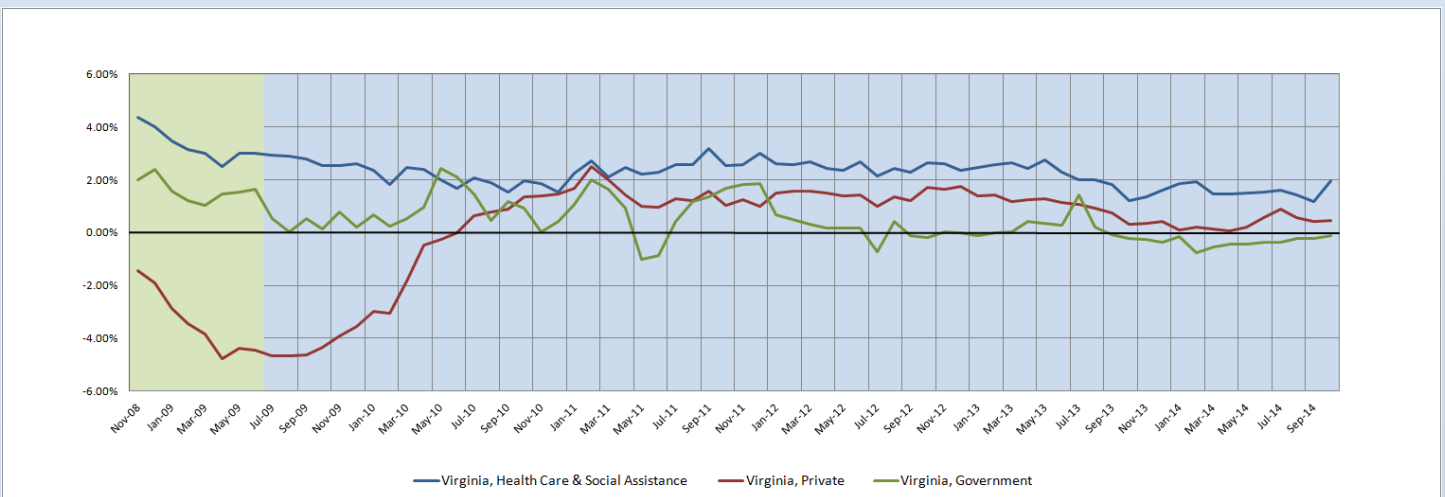
Figure 3: Six-Month Moving Average, Employment Growth, Seasonally Adjusted



Long-Term Employment Growth

Like its six-month counterpart, Virginia’s 12-month HC&SA employment growth rate moving average experienced a significant increase during the month. In fact, Virginia’s 12-month HC&SA employment growth rate moving average swung from a year-to-date low of 1.2% in September to a year-to-date high of 2.0% in October. At the same time, the 12-month moving average of the employment growth rate in Virginia’s government sector achieved a rather dubious milestone as it reached its own year-to-date high of -0.1%. Virginia’s government sector has not enjoyed a positive 12-month employment growth rate moving average since August 2013, although it has slowly been trending in a more positive direction through most of 2014. Meanwhile, Virginia’s private sector saw a slight improvement in its moving average to 0.5% in October.

Figure 4: Twelve-Month Moving Average, Employment Growth, Seasonally Adjusted



Healthcare Workforce
Data Center

Perimeter Center
9960 Mayland Drive, Suite 300
Henrico, VA 23233-1463

Phone: (804) 367-2115
Fax: (804) 527-4434
E-mail: hwdc@dhp.virginia.gov

www.dhp.virginia.gov/hwdc/

Virginia Healthcare Workforce Briefs are produced by
Justin Crow, MPA
HWDC Research Analyst
&
Christopher Coyle
HWDC Research Assistant

Follow us on. . .

Tumblr: <http://vahwdc.tumblr.com/>

The Department of Health Professions Healthcare Workforce Data Center works to improve the data collection and measurement of Virginia's healthcare workforce through regular assessment of workforce supply and demand issues among the 80 professions and 350,000 practitioners licensed in Virginia by DHP.

The HWDC collects data on Virginia's licensed health professionals through surveys completed during the online license renewal and application process. Survey results and data may be accessed on our website: www.dhp.virginia.gov/hwdc/.

The HWDC also provides a series of Virginia Healthcare Workforce Briefs based on data collected by the US Department of Labor's Bureau of Labor Statistics and the US Department of Commerce' Bureau of Economic Analysis.

Virginia Healthcare Workforce Briefs:

Series 1: State & National Employment (Monthly)

Series 2: Virginia Regional Employment (Monthly)

Series 3: Income & Compensation (Quarterly)

About the Data

Data in this report is from the US Department of Labor, Bureau of Labor Statistics' Current Employment Statistics program. The CES program surveys about 140,000 businesses and government agencies monthly. Unless otherwise noted, this series uses seasonally-adjusted data that removes seasonal variations related to weather, holidays, weekends, seasons and other predictable variations. This allows us to better examine underlying trends in the labor market. Data from recent months is preliminary and subject to revision in future releases from the CES. Revisions will be reported in future editions of this series. Unless otherwise noted, the CES data presented in this series:

Includes:

- ◆ Data on employed individuals drawing a paycheck (payroll employees).
- ◆ All employees, regardless of role, occupation or hours worked.
- ◆ HC&SA employees in the private sector only.
- ◆ Persons employed by health professionals in private practice.
- ◆ Both government and private sector workers in nonfarm employment data.

Does not include:

- ◆ Self-employed workers or volunteers, including health professionals in private practice.
 - ◆ HC&SA employees in the public sector. (These are counted as government workers in monthly reports. Approximately 54,500 of Virginia's public sector workers worked in the HC&SA sector in 2010 at the federal, state and local levels).
 - ◆ Information on hours worked or the quality of employment.
 - ◆ Government workers in HC&SA level data. (Government workers, regardless of occupation and role, are classified as public sector employees).
-