



# Virginia Healthcare Workforce Briefs

Indicators from the Bureau of Labor Statistics'  
Current Employment Statistics Survey  
**Series 1: State & National Employment**

Series 1, Issue 32

September 2014

## Inside this Brief:

Virginia HC&SA Employment	2
National HC&SA Employment	2
Employment Growth	3
Long-Term Job Growth	3
About the Data	4

Data in the report is seasonally adjusted, and includes employees of private firms only. Self-employed persons, including health professionals in private practice, are not included.

## Highlights

- ◆ According to preliminary estimates, Virginia's Health Care & Social Assistance (HC&SA) sector had a very strong month in August with the addition of 1,000 jobs to the state's economy. So far this year, Virginia's HC&SA sector has produced 4,200 new jobs.
- ◆ July's preliminary estimate for Virginia's HC&SA employment was revised downward by 100 jobs. With this revision, Virginia's HC&SA sector lost 200 jobs during the month.
- ◆ While Virginia's HC&SA sector experienced positive employment growth in August, the state's total nonfarm payroll actually fell by 1,500 during the month, which represents its worst monthly performance since March.
- ◆ In August, the national HC&SA sector added 42,700 jobs, its second-highest monthly total so far this year. Year-to-date, the national HC&SA sector has created 271,000 new jobs throughout the country, a 12% increase relative to the year-to-date total of the previous year.
- ◆ Total nonfarm payroll across the country increased by 142,000 in August. This represents the first time since January in which the national economy did not produce at least 200,000 new jobs in a given month.

## Data in Brief

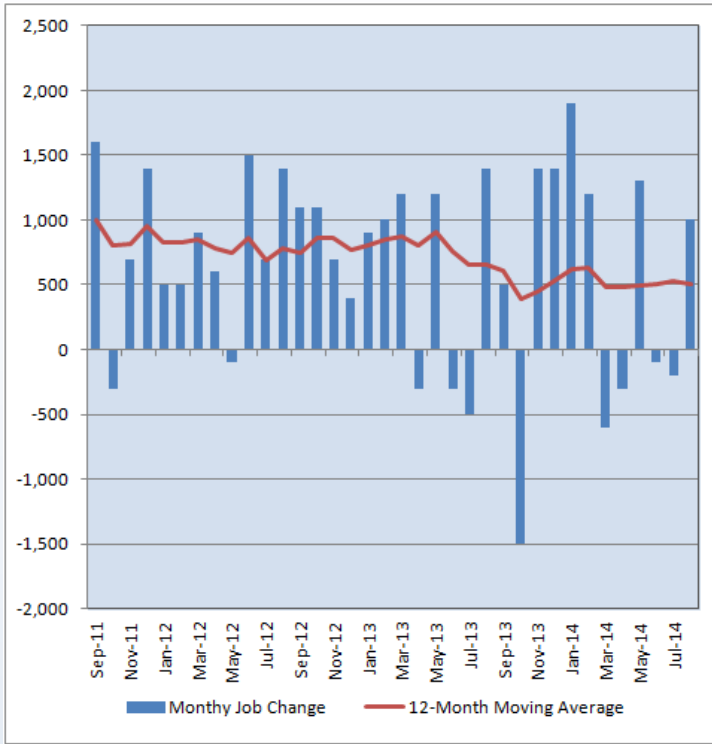
Seasonally Adjusted*	Employment, in Thousands				Growth Rate, Annualized		
	Aug. 2013	May 2014	July 2014	Aug. 2014	12 Month	3 Month	1 Month
<b>Nonfarm, Total</b>							
Virginia	3,768.5	3,765.9	3,788.6	3,787.1	0.5%	2.3%	-0.5%
National	136,636.0	138,497.0	138,976.0	139,118.0	1.8%	1.8%	1.2%
<b>Health &amp; Social Assistance</b>							
Virginia	409.7	415.0	414.7	415.7	1.5%	0.7%	2.9%
National	17,810.8	18,031.2	18,105.0	18,147.7	1.9%	2.6%	2.9%
<b>All Other Nonfarm</b>							
Virginia	3,358.8	3,350.9	3,373.9	3,371.4	0.4%	2.5%	-0.9%
National	118,825.2	120,465.8	120,871.0	120,970.3	1.8%	1.7%	1.0%

Preliminary estimates are italicized

\*Seasonally adjusted data is adjusted by the Bureau of Labor Statistics to account for weather, holidays and other seasonal changes. Economists use seasonally adjusted data to reveal underlying trends over time. This series uses seasonally adjusted data exclusively. When comparing data in this series to other HWDC series, or publications from other sources, it is important to note whether the data reported has been seasonally adjusted.

## Virginia HC&SA Employment

**Figure 1: Monthly Change in Employment in Virginia’s Health Care & Social Assistance Sector, Seasonally Adjusted.**



According to preliminary data released on September 19, 2014 by the U.S. Department of Labor, Bureau of Labor Statistics, Virginia’s HC&SA sector added, 1,000 jobs in August. Meanwhile, after a downward revision of 100 jobs to July’s preliminary employment estimate, Virginia’s HC&SA sector lost 200 jobs during the previous month.

After losing a modest number of jobs in each of the past two months, Virginia’s HC&SA sector rebounded strongly in August with its best monthly employment gain since May. Despite this gain, however, the 12-month moving average of the level change in Virginia’s HC&SA employment declined from 533 monthly jobs added in July to just 500 monthly jobs added in August.

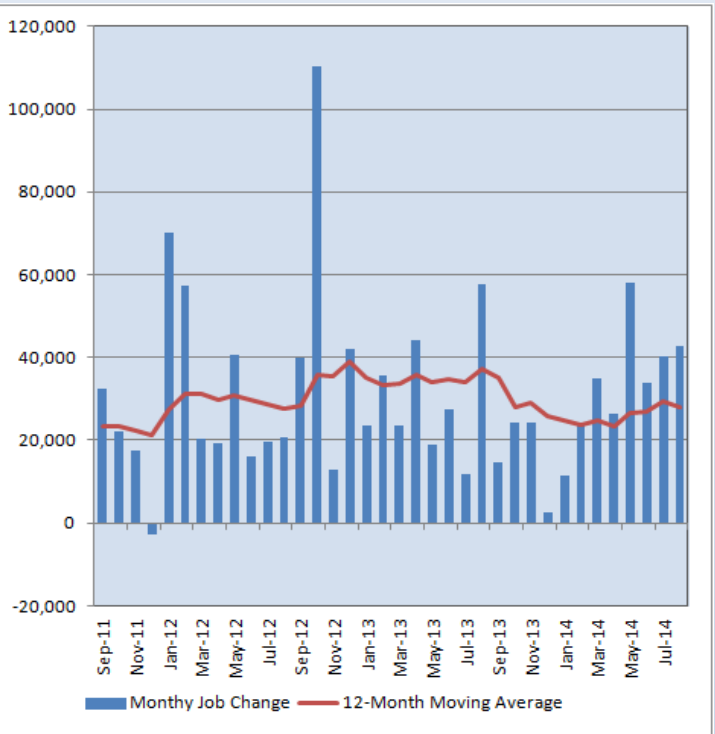
So far in 2014, Virginia’s HC&SA sector has added 4,200 jobs. This represents the slowest year-to-date performance for the sector since 2010, when just 3,800 HC&SA jobs were created through the first eight months of the year. This long-term slowdown can also be seen through the 12-month moving average of the level change in HC&SA employment, which has declined by half in the past three years.

## National HC&SA Employment

According to preliminary estimates, the national HC&SA sector enjoyed a strong month of employment gains with the addition of 42,700 new jobs in August. This month’s result continues a recent trend of improving employment numbers for the national HC&SA sector. This can best be demonstrated by the fact that August represents the seventh-consecutive month in which the number of monthly jobs added in the HC&SA sector has exceeded the 12-month moving average of the level change in HC&SA employment. In fact, although the 12-month moving average of the level change in HC&SA employment fell slightly during the current month to 28,075 monthly jobs added, it has still increased by more than 3,000 jobs since the beginning of 2014.

While the national HC&SA sector saw an improvement in its employment numbers in August, the nation’s total nonfarm payroll experienced a slowdown during the month. In August, total nonfarm payroll across the country increased by 142,000. Not only does this represent its lowest monthly increase since last December, but its also represents the first time in seven months in which the level change in total nonfarm payroll did not exceed 200,000 jobs.

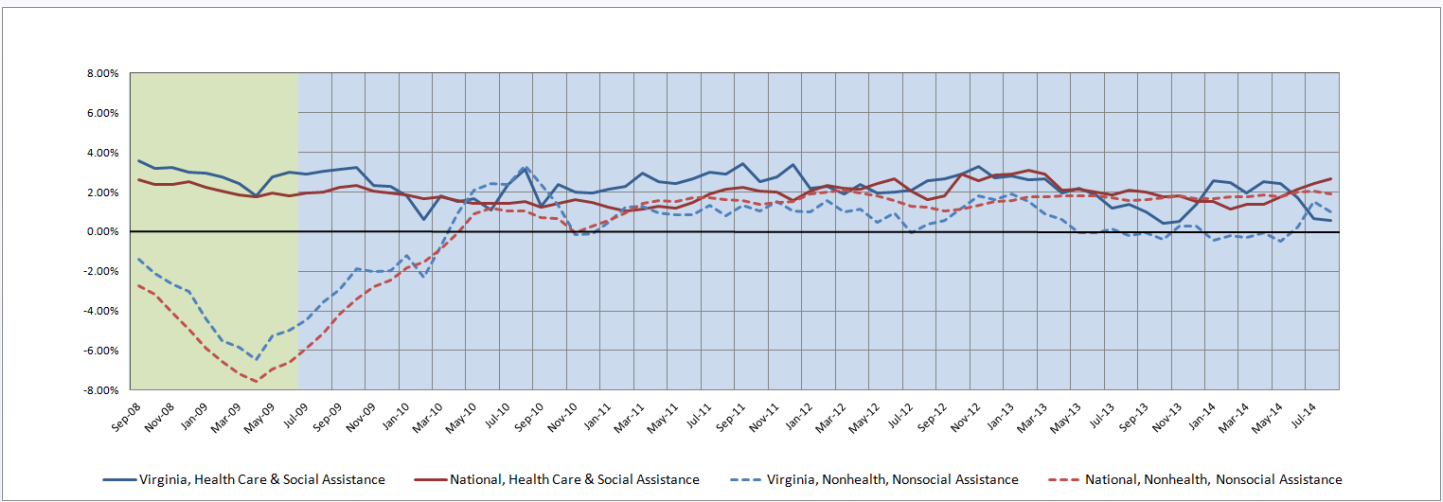
**Figure 2: Monthly Change in Employment in National Health Care & Social Assistance Sector, Seasonally Adjusted.**



### Employment Growth

Despite the addition of 1,000 new jobs in August, the six-month moving average of the employment growth rate in Virginia’s HC&SA sector declined for the fourth consecutive month. After this month’s drop, its six-month employment growth rate moving average is currently at 0.6%, its lowest value since last November. The six-month moving average of the employment growth rate in Virginia’s total nonfarm payroll also declined in August from 1.5% to 1.0%, but this still represents a marked improvement from the five consecutive months of negative employment growth that began the new year. Meanwhile, the national HC&SA sector experienced its sixth consecutive month of accelerating employment growth. At 2.7%, its six-month employment growth rate moving average has reached its highest level since March 2013.

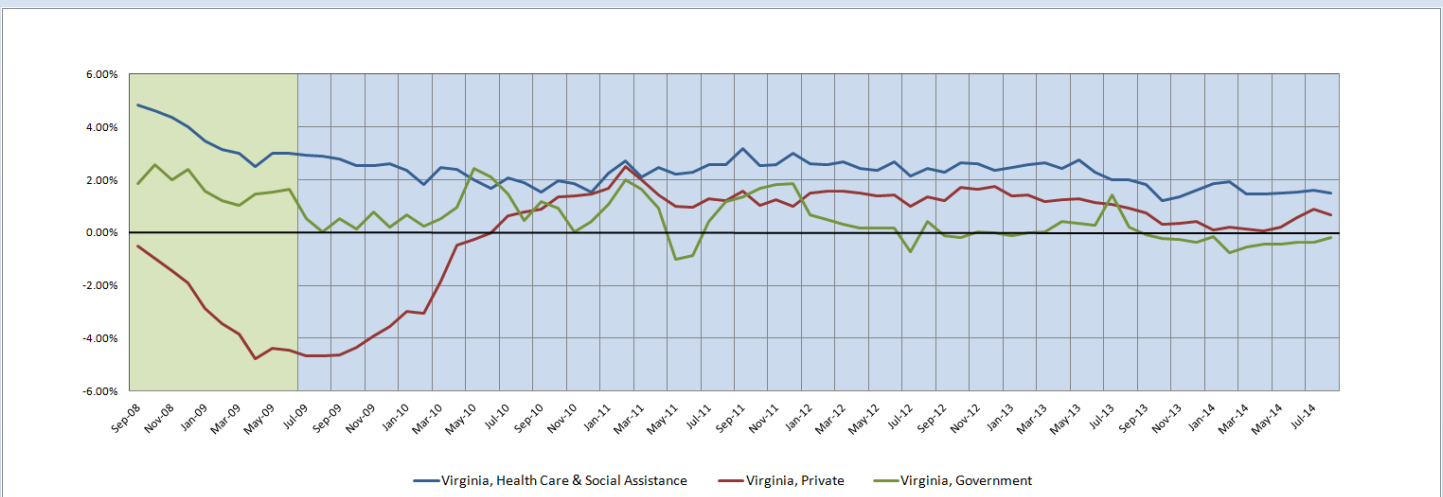
**Figure 3: Six-Month Moving Average, Employment Growth, Seasonally Adjusted**



### Long-Term Employment Growth

The 12-month moving average of the employment growth rate in Virginia’s HC&SA sector dropped slightly from 1.6% in July to 1.5% in August. Regardless, the long-term growth rate in Virginia’s HC&SA sector has remained very stable over the past six months, although its growth rate has declined by nearly 25% since last August. Virginia’s private sector also experienced a decline in its 12-month employment growth rate moving average from 0.9% in July to 0.7% in August. However, unlike Virginia’s HC&SA sector, Virginia’s long-term private employment growth has improved significantly over the past six months. Meanwhile, the 12-month moving average of the employment growth rate in Virginia’s government sector remains in negative territory at -0.2%, but this does represent its strongest relative growth rate since January.

**Figure 4: Twelve-Month Moving Average, Employment Growth, Seasonally Adjusted**



Healthcare Workforce  
Data Center

Perimeter Center  
9960 Mayland Drive, Suite 300  
Henrico, VA 23233-1463

Phone: (804) 367-2115  
Fax: (804) 527-4434  
E-mail: [hwdc@dhp.virginia.gov](mailto:hwdc@dhp.virginia.gov)

[www.dhp.virginia.gov/hwdc/](http://www.dhp.virginia.gov/hwdc/)

*Virginia Healthcare Workforce Briefs are produced by*  
**Justin Crow, MPA**  
*HWDC Research Analyst*  
&  
**Christopher Coyle**  
*HWDC Research Assistant*

Follow us on. . .

Tumblr: <http://vahwdc.tumblr.com/>

The Department of Health Professions Healthcare Workforce Data Center works to improve the data collection and measurement of Virginia's healthcare workforce through regular assessment of workforce supply and demand issues among the 80 professions and 350,000 practitioners licensed in Virginia by DHP.

The HWDC collects data on Virginia's licensed health professionals through surveys completed during the online license renewal and application process. Survey results and data may be accessed on our website: [www.dhp.virginia.gov/hwdc/](http://www.dhp.virginia.gov/hwdc/).

The HWDC also provides a series of Virginia Healthcare Workforce Briefs based on data collected by the US Department of Labor's Bureau of Labor Statistics and the US Department of Commerce's Bureau of Economic Analysis.

Virginia Healthcare Workforce Briefs:

Series 1: State & National Employment (Monthly)

Series 2: Virginia Regional Employment (Monthly)

Series 3: Income & Compensation (Quarterly)

---

## About the Data

Data in this report is from the US Department of Labor, Bureau of Labor Statistics' Current Employment Statistics program. The CES program surveys about 140,000 businesses and government agencies monthly. Unless otherwise noted, this series uses seasonally-adjusted data that removes seasonal variations related to weather, holidays, weekends, seasons and other predictable variations. This allows us to better examine underlying trends in the labor market. Data from recent months is preliminary and subject to revision in future releases from the CES. Revisions will be reported in future editions of this series. Unless otherwise noted, the CES data presented in this series:

### Includes:

- ◆ Data on employed individuals drawing a paycheck (payroll employees).
- ◆ All employees, regardless of role, occupation or hours worked.
- ◆ HC&SA employees in the private sector only.
- ◆ Persons employed by health professionals in private practice.
- ◆ Both government and private sector workers in nonfarm employment data.

### Does not include:

- ◆ Self-employed workers or volunteers, including health professionals in private practice.
  - ◆ HC&SA employees in the public sector. (These are counted as government workers in monthly reports. Approximately 54,500 of Virginia's public sector workers worked in the HC&SA sector in 2010 at the federal, state and local levels).
  - ◆ Information on hours worked or the quality of employment.
  - ◆ Government workers in HC&SA level data. (Government workers, regardless of occupation and role, are classified as public sector employees).
-