



Virginia Healthcare Workforce Briefs

Indicators from the Bureau of Labor Statistics'
Current Employment Statistics Survey
Series 1: State & National Employment

Series 1, Issue 37

February 2015

Inside this Brief:

Virginia HC&SA Employment	2
National HC&SA Employment	2
Employment Growth	3
Long-Term Job Growth	3
About the Data	4

Data in the report is seasonally adjusted, and includes employees of private firms only. Self-employed persons, including health professionals in private practice, are not included.

Highlights

- ◆ Along with the release of January's preliminary employment estimates, the Bureau of Labor Statistics (BLS) has also used its 2014 benchmarks to create revised estimates for employment data going back to January 2010.
- ◆ According to preliminary estimates, Virginia's Health Care & Social Assistance (HC&SA) sector created 2,000 jobs in January. This represents the strongest one-month employment gain for Virginia's HC&SA sector in more than three years.
- ◆ Despite strong employment growth in Virginia's HC&SA sector, the state's total nonfarm payroll fell by 10,900, its largest one-month decline in nearly five years.
- ◆ The national HC&SA sector created 52,500 jobs in January. January's result is significantly above the average monthly change in national HC&SA employment over the past year, which currently stands at 38,333 monthly jobs added.
- ◆ The national economy added 239,000 jobs in January. Although this is down from the 329,000 jobs created in December 2014, January still represents the eleventh-consecutive month in which the nation's total nonfarm payroll has exceeded 200,000.

Data in Brief

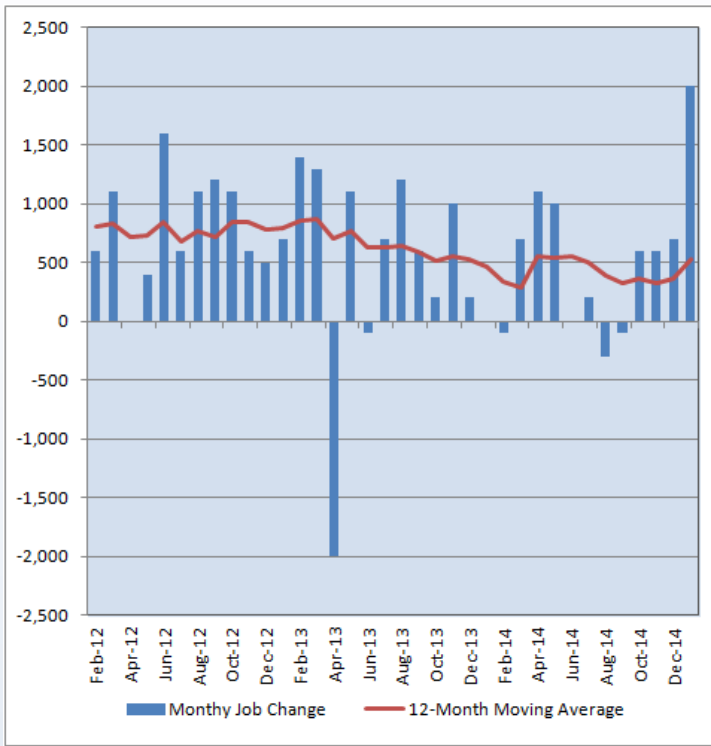
Seasonally Adjusted*	Employment, in Thousands				Growth Rate, Annualized		
	Jan. 2014	Oct. 2014	Dec. 2014	Jan. 2015	12 Month	3 Month	1 Month
Nonfarm, Total							
Virginia	3,759.6	3,778.8	3,797.3	3,786.4	0.7%	0.8%	-3.4%
National	137,642.0	139,840.0	140,592.0	140,831.0	2.3%	2.9%	2.1%
Health & Social Assistance							
Virginia	405.9	409.0	401.3	412.3	1.6%	3.3%	6.0%
National	17,870.2	18,168.3	18,277.7	18,330.2	2.6%	3.6%	3.5%
All Other Nonfarm							
Virginia	3,353.7	3,369.8	3,387.0	3,374.1	0.6%	0.5%	-4.5%
National	119,771.8	121,671.7	122,314.3	122,500.8	2.3%	2.8%	1.8%

Preliminary estimates are italicized

*Seasonally adjusted data is adjusted by the Bureau of Labor Statistics to account for weather, holidays and other seasonal changes. Economists use seasonally adjusted data to reveal underlying trends over time. This series uses seasonally adjusted data exclusively. When comparing data in this series to other HWDC series, or publications from other sources, it is important to note whether the data reported has been seasonally adjusted.

Virginia HC&SA Employment

Figure 1: Monthly Change in Employment in Virginia’s Health Care & Social Assistance Sector, Seasonally Adjusted.



According to preliminary data released on Tuesday, March 17, 2015 by the U.S. Department of Labor, Bureau of Labor Statistics, Virginia’s Health Care & Social Assistance (HC&SA) sector experienced its largest one-month employment gain in more than three years with the addition of 2,000 jobs to the state’s economy in January. In fact, January’s employment gain was so strong that it exceeded the total number of jobs created in Virginia’s HS&CSA sector throughout the entire second half of 2014. Thanks in large part to this month’s employment gains, the 12-month moving average of the level change in Virginia’s HC&SA employment increased to 533, reaching its highest level since last June.

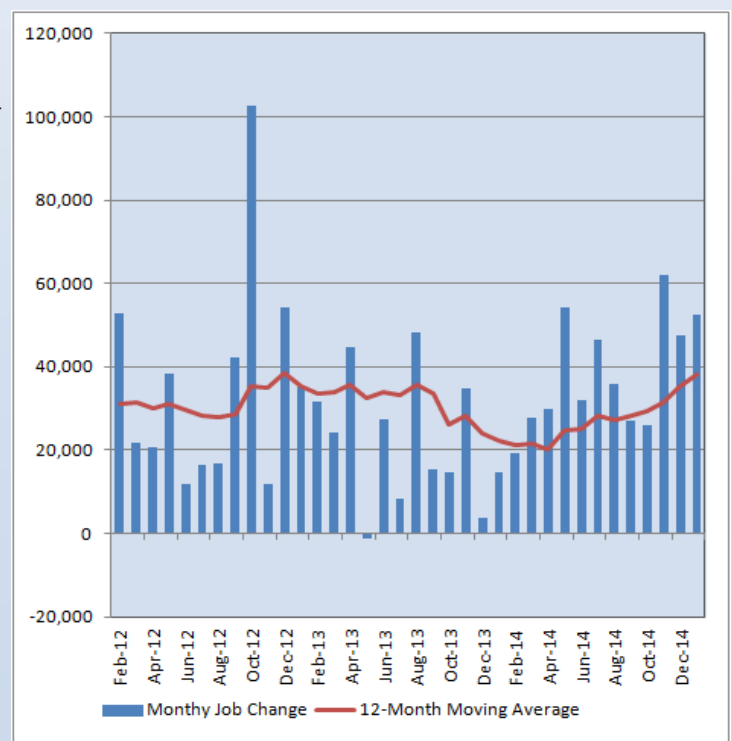
The strength of Virginia’s HC&SA sector is even more impressive considering the weakness in the rest of the state’s economy. In January, the state’s overall economy shed 10,900 jobs, which represents its worst monthly job loss since February 2010. Despite January’s disappointing job numbers, however, Virginia’s economy has still managed to created 26,800 new jobs during the past 12 months.

National HC&SA Employment

The national HC&SA sector produce another solid month of employment gains in January with the addition of 52,500 jobs to the national economy. For the third consecutive month, job gains have exceeded the 12-month moving average of the level change in national HC&SA employment, suggesting an improving job market for the sector. In fact, after reaching a four-year low of 20,168 in April, the 12-month moving average of the level change in national HC&SA employment has nearly doubled to 38,333, its highest value since December 2012.

HC&SA employment growth has helped boost the national economy, which added 239,000 jobs during the month of January. This represents the best start to a new year for the national economy since 2012, when national total nonfarm payroll increased by 380,000. Although national employment growth has slowed somewhat over the past two months after adding 423,000 jobs in November 2014, a four-and-a-half year high, the national economy has still managed to increase total nonfarm payroll by a minimum of 200,000 new jobs per month for each of the past eleven months.

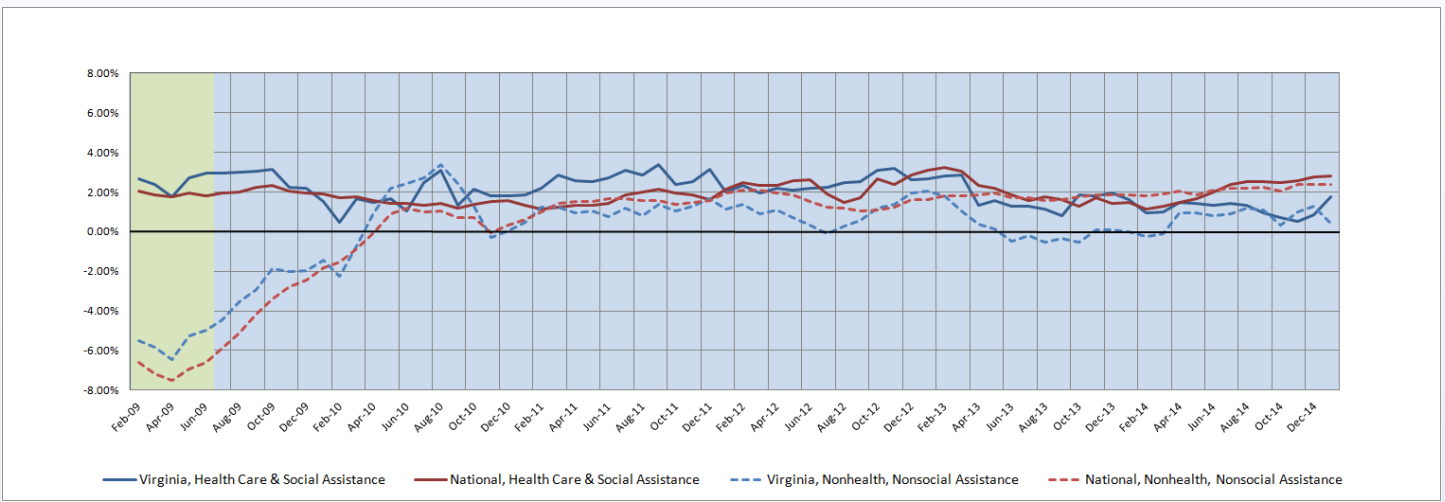
Figure 2: Monthly Change in Employment in National Health Care & Social Assistance Sector, Seasonally Adjusted.



Employment Growth

The six-month moving average of Virginia’s HC&SA employment growth rate doubled in January from 0.84% to 1.74%, reaching a one-year high in the process. At the same time, the six-month moving average of employment growth in Virginia’s non-HC&SA sectors nosedived from 1.26% to 0.41%. Regardless, Virginia has been underperforming the national average with respect to employment growth in both its HC&SA and non-HC&SA sectors. The six-month moving average of employment growth in the national non-HC&SA sectors dipped slightly to 2.37% in January, although this is still eight times the rate of Virginia’s non-HC&SA sectors. Meanwhile the corresponding moving average for the national HC&SA sector reach 2.80% during the month, which represents a high not seen since March 2013.

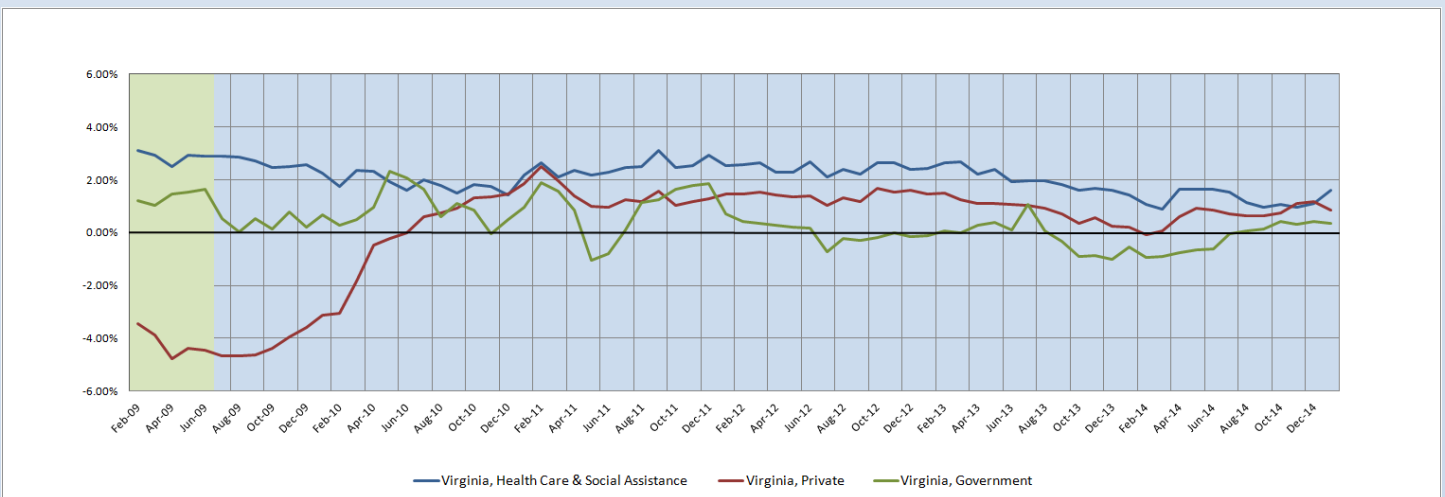
Figure 3: Six-Month Moving Average, Employment Growth, Seasonally Adjusted



Long-Term Employment Growth

Long-term employment growth in Virginia’s HC&SA sector experienced a strong jump in January as its 12-month employment growth rate moving average reached a seven-month high of 1.59%. However, Virginia’s private and government sectors failed to participate in the growth of the state’s HC&SA sector. The 12-month moving average of the employment growth rate in Virginia’s private sector fell from 1.18% to 0.84%, while the corresponding moving average for Virginia’s government sector fell modestly from 0.41% to 0.35%. Despite these declines, however, there is still some room for optimism in both of these sectors: At the same point in 2014, the 12-month employment growth rate moving averages for Virginia’s private and government sectors were 0.21% and -0.55%, respectively, which are both well below their current levels.

Figure 4: Twelve-Month Moving Average, Employment Growth, Seasonally Adjusted



Healthcare Workforce
Data Center

Perimeter Center
9960 Mayland Drive, Suite 300
Henrico, VA 23233-1463

Phone: (804) 367-2115
Fax: (804) 527-4434
E-mail: hwdc@dhp.virginia.gov

www.dhp.virginia.gov/hwdc/

Virginia Healthcare Workforce Briefs are produced by
Justin Crow, MPA
HWDC Research Analyst
&
Christopher Coyle
HWDC Research Assistant

Follow us on. . .

Tumblr: <http://vahwdc.tumblr.com/>

The Department of Health Professions Healthcare Workforce Data Center works to improve the data collection and measurement of Virginia's healthcare workforce through regular assessment of workforce supply and demand issues among the 80 professions and 350,000 practitioners licensed in Virginia by DHP.

The HWDC collects data on Virginia's licensed health professionals through surveys completed during the online license renewal and application process. Survey results and data may be accessed on our website: www.dhp.virginia.gov/hwdc/.

The HWDC also provides a series of Virginia Healthcare Workforce Briefs based on data collected by the US Department of Labor's Bureau of Labor Statistics and the US Department of Commerce' Bureau of Economic Analysis.

Virginia Healthcare Workforce Briefs:

Series 1: State & National Employment (Monthly)

Series 2: Virginia Regional Employment (Monthly)

Series 3: Income & Compensation (Quarterly)

About the Data

Data in this report is from the US Department of Labor, Bureau of Labor Statistics' Current Employment Statistics program. The CES program surveys about 140,000 businesses and government agencies monthly. Unless otherwise noted, this series uses seasonally-adjusted data that removes seasonal variations related to weather, holidays, weekends, seasons and other predictable variations. This allows us to better examine underlying trends in the labor market. Data from recent months is preliminary and subject to revision in future releases from the CES. Revisions will be reported in future editions of this series. Unless otherwise noted, the CES data presented in this series:

Includes:

- ◆ Data on employed individuals drawing a paycheck (payroll employees).
- ◆ All employees, regardless of role, occupation or hours worked.
- ◆ HC&SA employees in the private sector only.
- ◆ Persons employed by health professionals in private practice.
- ◆ Both government and private sector workers in nonfarm employment data.

Does not include:

- ◆ Self-employed workers or volunteers, including health professionals in private practice.
 - ◆ HC&SA employees in the public sector. (These are counted as government workers in monthly reports. Approximately 54,500 of Virginia's public sector workers worked in the HC&SA sector in 2010 at the federal, state and local levels).
 - ◆ Information on hours worked or the quality of employment.
 - ◆ Government workers in HC&SA level data. (Government workers, regardless of occupation and role, are classified as public sector employees).
-