



# Virginia Healthcare Workforce Briefs

Indicators from the Bureau of Labor Statistics'  
Current Employment Statistics Survey  
**Series 2: Regional & Sectoral Employment**

Series 2, Issue 47

December 2015

## Inside this Brief:

Regional Employment Growth	2
Regional HC&SA Share	3
Subsector Employment Growth	3
Subsector HC&SA Share	4
Region Map	5
About the Data	6

*Data in this report is not seasonally adjusted. HC&SA data includes employees of private firms only. Self-employed persons, including health professionals in private practice, are not included.*

## Highlights

- ◆ Data in this series is not seasonally adjusted and exhibits short-term volatility from fluctuations in holidays, weekends, weather and other seasonal factors. Estimates for the most recent month are preliminary.
- ◆ Virginia's Health Care & Social Assistance (HC&SA) sector had its best month of employment growth since April after creating 2,400 jobs in November, which represents a one-month annualized growth rate of 7.1%. So far this year, Virginia's HC&SA sector has increased employment by 6,000.
- ◆ Nearly all of the state's HC&SA employment growth came from outside of its three main metropolitan areas. While Richmond and Northern Virginia each lost 300 HC&SA jobs during the month, the HC&SA sector in the Rest of Virginia created 2,400 jobs. Meanwhile, Hampton Roads added 600 HC&SA jobs in November.
- ◆ Once again, Virginia's Social Assistance subsector was the main driver of HC&SA employment growth. After creating 1,400 jobs in October, this subsector followed up with even stronger gains in November as employment increased by 1,700. Nursing & Residential Care Facilities also had a solid month with the creation of 800 new jobs.

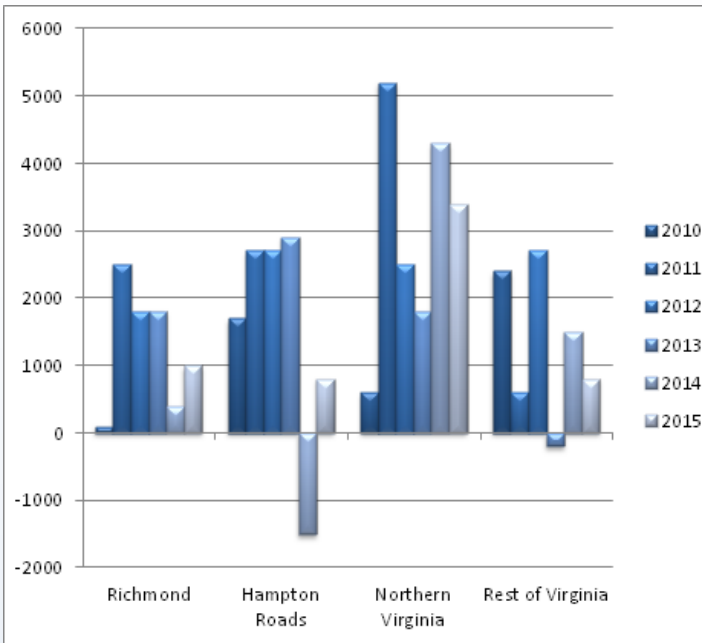
## Data in Brief

Not Seasonally Adjusted*	Employment, in Thousands				Growth Rate, Annualized		
	Nov. 2014	Aug. 2015	Oct. 2015	Nov. 2015	12 Month	3 Month	1 Month
<b>Virginia</b>							
Total Nonfarm	3,823.1	3,811.2	3,851.5	3,874.1	1.3%	6.8%	7.3%
Health Care & Social Assistance	411.3	416.2	416.2	418.6	1.8%	2.3%	7.1%
<b>Hampton Roads</b>							
Total Nonfarm	759.4	766.4	763.7	764.9	0.7%	-0.8%	1.9%
Health Care & Social Assistance	86.9	86.4	86.7	87.3	0.5%	4.2%	8.6%
<b>Northern Virginia</b>							
Total Nonfarm	1,397.1	1,411.8	1,418.8	1,420.4	1.7%	2.5%	1.4%
Health Care & Social Assistance	119.7	124.1	123.8	123.5	3.2%	-1.9%	-2.9%
<b>Richmond</b>							
Total Nonfarm	643.5	630.7	641.9	643.8	0.0%	8.6%	3.6%
Health Care & Social Assistance	80.8	81.0	81.6	81.3	0.6%	1.5%	-4.3%
<b>Rest of Virginia</b>							
Total Nonfarm	1,023.1	1,002.3	1,027.1	1,045.0	2.1%	18.2%	23.0%
Health Care & Social Assistance	123.9	124.7	124.1	126.5	2.1%	5.9%	25.8%

Preliminary estimates are italicized

\*Seasonally adjusted data is adjusted by the Bureau of Labor Statistics to account for weather and other seasonal changes. Since the US Bureau of Labor Statistics does not provide seasonally adjusted data at this level, this series uses **non**-seasonally adjusted data exclusively. Seasonal variation may account for some of the variation in time series data. When comparing data in this series to other HWDC series or other publications it is important to note whether the data reported has been seasonally adjusted.

## Regional HC&amp;SA Employment Growth, Level



**Figure 1: Annual Change in HC&SA Employment (Not Seasonally Adjusted, Full-Year Change for 2010-2014, Jan. to Nov. for 2015).**

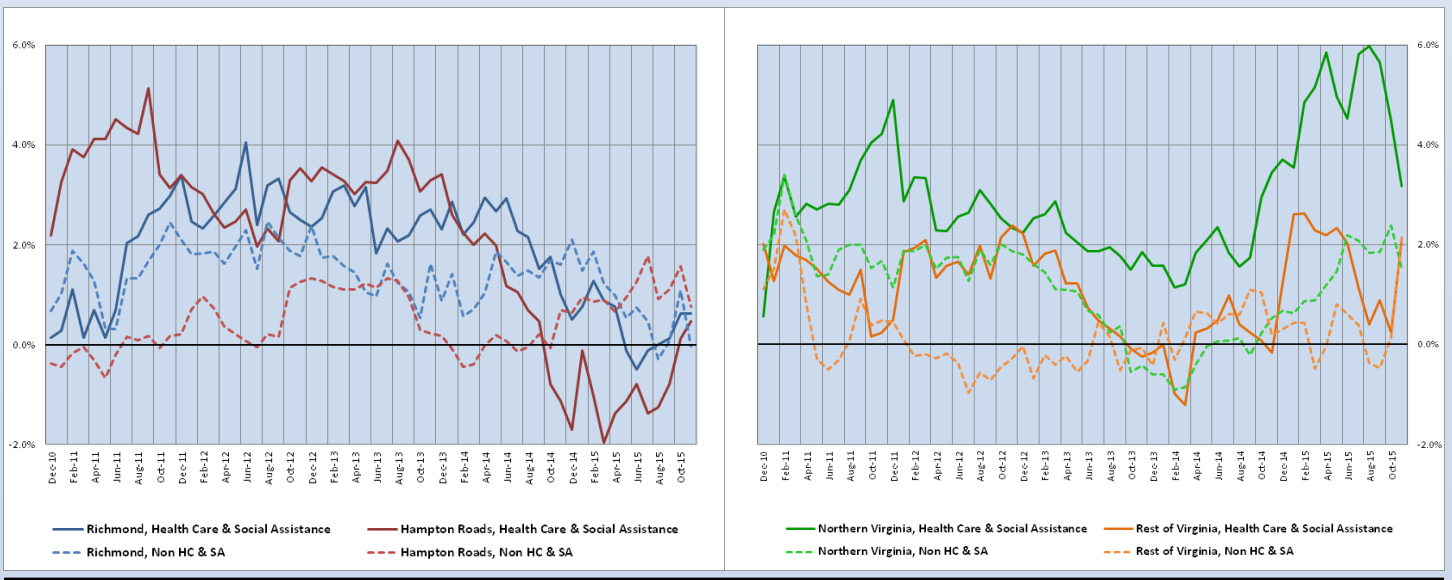
According to preliminary data released on Friday, December 18, 2015 by the U.S. Department of Labor, Bureau of Labor Statistics, Virginia's Health Care & Social Assistance (HC&SA) sector enjoyed one of its best months in 2015 after creating 2,400 jobs in November. Most of these jobs were created outside of Virginia's three main metropolitan areas as the Rest of Virginia increased by HC&SA employment by 2,400 during the month, which represents a one-month annualized growth rate of 25.8%. At the same time, Hampton Roads also had another solid month of HC&SA employment growth after creating 600 jobs in November. However, these gains were wiped away by the losses in Richmond and Northern Virginia, both of which lost 300 HC&SA jobs each during the month.

With one month left to go in 2015, every region in the state has made a positive contribution to HC&SA employment. So far this year, Virginia has created 6,000 HC&SA jobs, and Northern Virginia has been responsible for more than half of these total gains.

## Year-Over-Year Regional Employment Growth

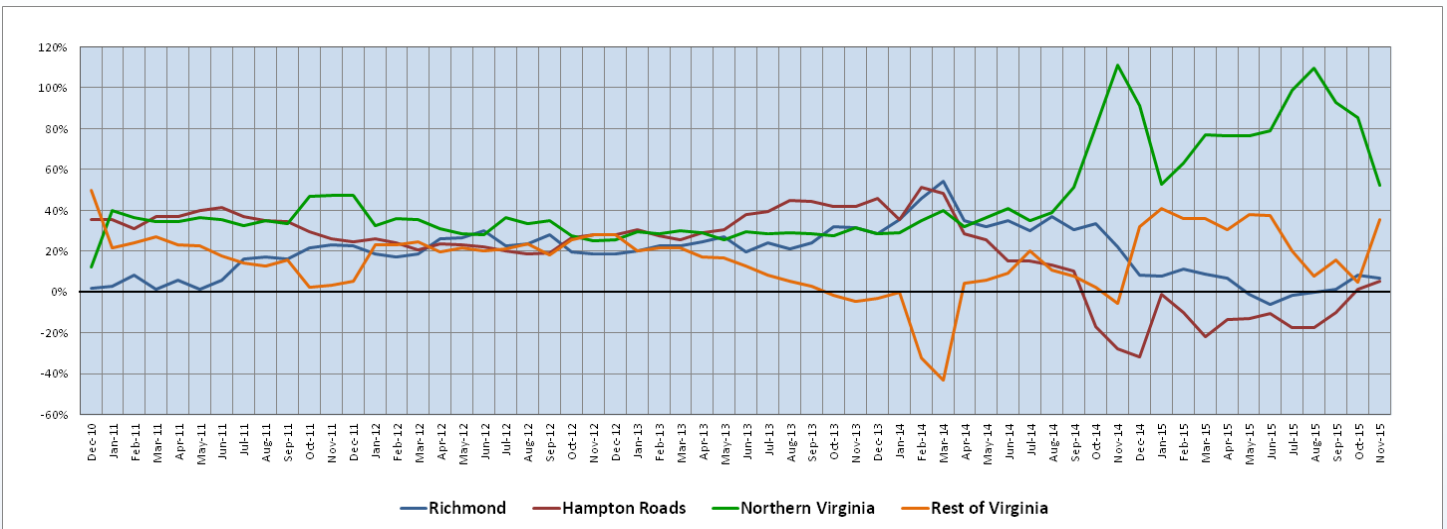
With November's impressive job growth, the Rest of Virginia's year-over-year HC&SA employment growth rate reached a six-month high of 2.10%. At the same time, Northern Virginia's year-over-year HC&SA employment growth rate declined yet again in November, reaching a year-to-date low of 3.17%. Regardless, even with this decline, Northern Virginia's HC&SA sector continues to sport the fastest year-over-year employment growth rate of any region in the state, a distinction it has now held for 15 consecutive months. Meanwhile, Hampton Roads continues to see improvement in the long-term employment growth of its HC&SA sector after its year-over-year growth rate reached a year-to-date high of 0.46% in November.

**Figure 2: Year-Over-Year Employment Growth (Not Seasonally Adjusted).**



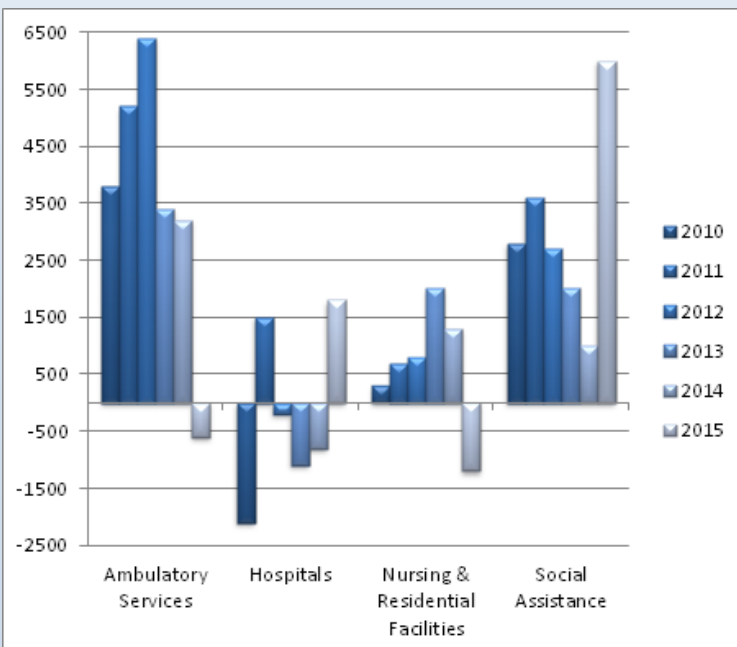
## Regional Share of 12-month Growth

**Figure 3: Regional Share of Previous 12-Month Employment Growth in Virginia's HC&SA Sector, Not Seasonally Adjusted.**



Over the past 12 months, Northern Virginia has been responsible for just over 52% of all HC&SA employment growth in the state. Despite being responsible for more than half of all HC&SA job growth during this time period, this actually represents the lowest 12-month HC&SA employment growth share for Northern Virginia since September 2014. The Rest of Virginia took most of this growth share in November after creating 2,400 jobs during the month. With this gain, the Rest of Virginia's 12-month HC&SA employment growth share increased from 4.84% all the way to 35.62%. Hampton Roads also saw an increase in its 12-month HC&SA employment growth share during the month from 1.61% to 5.48%, while Richmond's HC&SA sector experienced a small drop in its growth share from 8.06% to 6.85%.

## Subsector Employment Growth



**Figure 4: Annual & YTD Change in HC&SA Subsector Employment (Not Seasonally Adjusted, Full-Year Change for 2010-2014, Jan. to Nov. for 2015).**

Since August, Virginia's Social Assistance subsector has seen a surge in employment growth. In just the past four months, this subsector has created 4,900 jobs, including 1,700 in November alone. Virginia's Nursing & Residential Care Facilities also had a strong month in November after adding 800 jobs, putting an end to three consecutive months of employment losses. Virginia's Hospitals also managed to create a modest number of new jobs in November as employment increased by 100 during the month. With this result, Virginia's Hospitals have now added jobs in each of the past six months. Only Ambulatory Health Care Services failed to join in November's gains as employment in this subsector fell by 200.

So far in 2015, Virginia's Social Assistance subsector has created 6,000 jobs. If present trends continue, this would represent the best year for this subsector in more than five years. In addition, Virginia's Hospitals have created 1,800 jobs in 2015. This subsector now has an excellent chance of reversing three consecutive years of full-year job losses.

## Distribution of Growth by Subsector

Not Seasonally Adjusted	Employment, in Thousands				Growth Rate, Annualized		
	Nov. 2014	Aug. 2015	Oct. 2015	Nov. 2015	12 Month	3 Month	1 Month
<b>Virginia</b>							
Health Care & Social Assistance	411.3	416.2	416.2	418.6	1.8%	2.3%	7.1%
<i>Ambulatory Health Care Services</i>	164.6	165.2	164.5	164.3	-0.2%	-2.2%	-1.4%
<i>Hospitals</i>	102.0	103.3	103.8	103.9	1.9%	2.3%	1.2%
<i>Nursing &amp; Residential Care Facilities</i>	72.8	73.1	71.9	72.7	-0.1%	-2.2%	14.2%
<i>Social Assistance</i>	71.9	74.6	76.0	77.7	8.1%	17.7%	30.4%
<b>Hampton Roads</b>							
Health Care & Social Assistance	86.9	86.4	86.7	87.3	0.5%	4.2%	8.6%
<i>Hospitals</i>	21.4	21.6	21.8	21.6	0.9%	0.0%	-10.5%
<b>Northern Virginia</b>							
Health Care & Social Assistance	119.7	124.1	123.8	123.5	3.2%	-1.9%	-2.9%
<i>Ambulatory Health Care Services</i>	55.5	57.2	56.9	56.7	2.2%	-3.5%	-4.1%
<i>Hospitals</i>	23.8	24.4	24.6	24.4	2.5%	0.0%	-9.3%

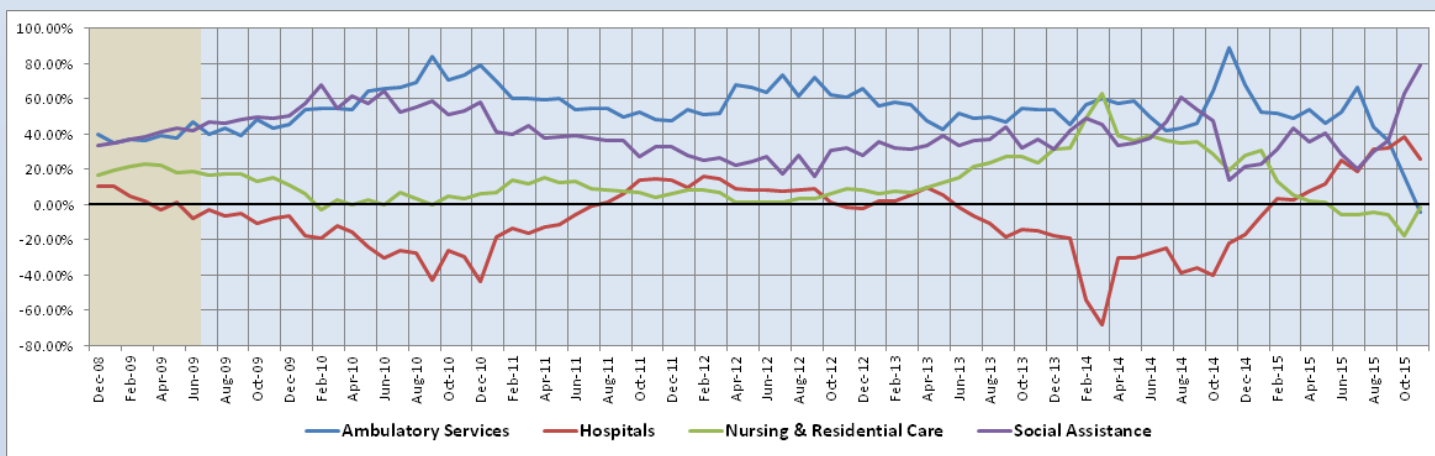
Preliminary estimates are italicized

Over the past 12 months, Virginia's Social Assistance subsector has seen employment grow at 8.1%, which is well above the statewide average for the HC&SA sector of just 1.8%. Even more impressively, given this very strong 12-month growth rate, the employment growth of this subsector has only accelerated in recent months. Over the past three months, employment in Virginia's Social Assistance subsector has grown at a 17.7% annualized rate, while its one-month annualized growth rate reached a phenomenal 30.4%. Meanwhile, Nursing & Residential Care Facilities also enjoyed a strong one-month annualized employment growth rate in November of 14.2%.

## Share of 12-Month Growth by Subsector

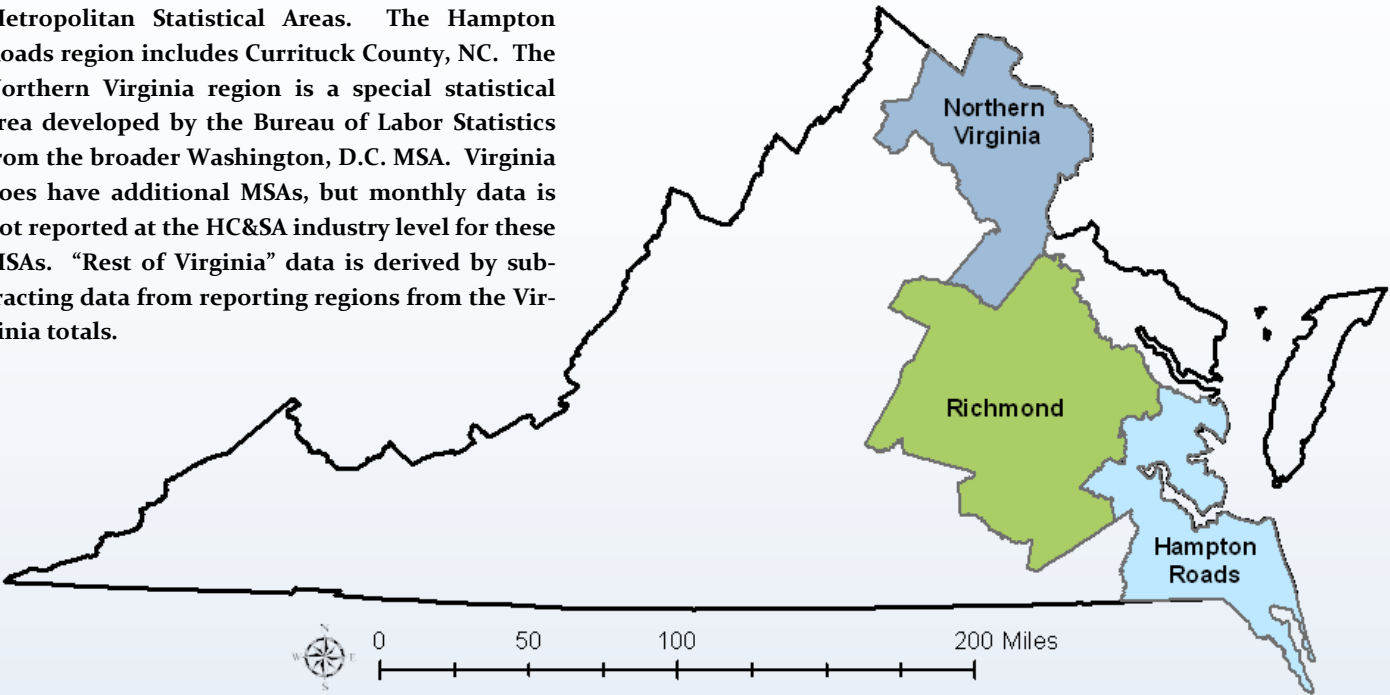
Thanks to the rapid job growth in Virginia's Social Assistance subsector, its 12-month employment growth share reached a decade-long high in November of 79.45%. Nursing & Residential Care Facilities also experienced a rebound in its 12-month growth share in November, although it remained in negative territory for the sixth consecutive month at -1.37%. However, Nursing & Residential Care Facilities is not the only HC&SA subsector that currently sports a negative growth share. After declining for four consecutive months, Ambulatory Health Care services saw its growth share dip into negative territory at -4.11% in November. Meanwhile, Virginia's Hospitals saw its respective growth share drop to 26.03% during the month.

Figure 5: Share of Previous 12-Month Growth in Virginia's HC&amp;SA Subsectors (Not Seasonally Adjusted).



Region Map

HWDC *Briefing Series 2* uses Federally designated Metropolitan Statistical Areas. The Hampton Roads region includes Currituck County, NC. The Northern Virginia region is a special statistical area developed by the Bureau of Labor Statistics from the broader Washington, D.C. MSA. Virginia does have additional MSAs, but monthly data is not reported at the HC&SA industry level for these MSAs. “Rest of Virginia” data is derived by subtracting data from reporting regions from the Virginia totals.



Region Detail

Northern Virginia		Richmond		Hampton Roads	
Northern VA, (Non-standard CES Area 94783)		Richmond, VA (MSA 40060)		Virginia Beach-Norfolk-Newport News, VA-NC (MSA 47260)	
Counties:	Cities	Counties:	Cities	Counties:	Cities
Arlington	Alexandria	Amelia	Colonial Heights	Gloucester	Chesapeake
Clarke	Fairfax	Caroline	Hopewell	Isle of Wight	Hampton
Fairfax	Falls Church	Charles City	Petersburg	James City	Newport News
Fauquier	Fredericksburg	Chesterfield	Richmond	Mathews	Norfolk
Loudoun	Manassas	Cumberland		Surry	Poquoson
Prince William	Manassas Park	Dinwiddie		York	Portsmouth
Spotsylvania		Goochland			Suffolk
Stafford		Hanover			Virginia Beach
Warren		Henrico			Williamsburg
		King & Queen			
		King William			
		Louisa			
		New Kent			
		Powhatan			
		Prince George			
		Sussex			



## Healthcare Workforce Data Center

Perimeter Center  
9960 Mayland Drive, Suite 300  
Henrico, VA 23233-1463

Phone: (804) 367-2115  
Fax: (804) 527-4434  
E-mail: [hwdc@dhp.virginia.gov](mailto:hwdc@dhp.virginia.gov)

[www.dhp.virginia.gov/hwdc/](http://www.dhp.virginia.gov/hwdc/)

### HWDC Staff:

Elizabeth Carter, Ph.D.  
*Executive Director*

Yetty Shobo, Ph.D.  
*Deputy Director*

Laura Jackson  
*Operations Manager*

Christopher Coyle  
*Research Assistant*

The Department of Health Professions Healthcare Workforce Data Center works to improve the data collection and measurement of Virginia's healthcare workforce through regular assessment of workforce supply and demand issues among the 80 professions and 350,000 practitioners licensed in Virginia by DHP.

The HWDC collects data on Virginia's licensed health professionals through surveys completed during the online license renewal and application process. Survey results and data may be accessed on our website: [www.dhp.virginia.gov/hwdc/](http://www.dhp.virginia.gov/hwdc/).

The HWDC also provides a series of Virginia Healthcare Workforce Briefs based data collected by the US Department of Labor's Bureau of Labor Statistics and the US Department of Commerce' Bureau of Economic Analysis.

### Virginia Healthcare Workforce Briefs:

Series 1: State & National Employment (Monthly)

Series 2: Virginia Regional Employment (Monthly)

Series 3: Income & Compensation (Quarterly)

Follow us on. . .

Tumblr: <http://vahwdc.tumblr.com/>

## About the Data

Data in this report is from the US Department of Labor Bureau of Labor Statistics' Current Employment Statistics program. The CES program surveys about 143,000 businesses and government agencies monthly. Unless otherwise noted, this series uses data that is not seasonally adjusted. Seasonal variations related to weather, holidays, weekends, seasons and other predictable variations are apparent in the data. Short-term changes may be related to seasonal changes rather than underlying trends. Data from recent months is preliminary and subject to revision in future releases from the CES. Revisions will be reported in future editions of this series. Unless otherwise noted, the CES data presented in this series:

### Includes:

- ◆ Data on employed individuals drawing a paycheck (payroll employees).
- ◆ All employees, regardless of role, occupation or hours worked.
- ◆ HC&SA employees in the private sector only.
- ◆ Persons employed by health professionals in private practice.
- ◆ Both government and private sector workers in nonfarm employment data.

### Does not include:

- ◆ Self-employed workers or volunteers, including health professionals in private practice.
- ◆ HC&SA employees in the public sector. (These are counted as government workers in monthly reports. Approximately 54,500 of Virginia's public sector workers worked in the HC&SA sector in 2010 at the federal, state and local levels).
- ◆ Information on hours worked or the quality of employment.
- ◆ Government workers in HC&SA level data. (Government workers, regardless of occupation and role, are classified as public sector employees).