



Virginia Healthcare Workforce Briefs

Indicators from the Bureau of Labor Statistics'
Current Employment Statistics Survey
Series 1: State & National Employment

Series 1, Issue 52

May 2016

Inside this Brief:

Virginia HC&SA Employment	2
Virginia Employment	2
National Employment	3
State Employment Growth	3
About the Data	4

Data in the report are seasonally adjusted. Self-employed persons, including health professionals in private practice, are not included.

Highlights

- ◆ According to preliminary estimates, Virginia's Health Care & Social Assistance (HC&SA) sector experienced its second consecutive month of employment losses in April. After losing 2,100 jobs in March, Virginia's HC&SA sector shed an additional 900 jobs in April.
- ◆ Virginia's overall economy did not fare any better during the month. In April, the state's total nonfarm payroll declined by 12,000. This represents the worst single month of employment losses in the state's total nonfarm payroll in more than six years.
- ◆ The national HC&SA sector saw employment increase by 38,200 in April, which represents a one-month annualized growth rate of 2.4%. So far in 2016, the national HC&SA sector has created 172,300 jobs, which is below the 208,300 jobs created through the first four month of 2015. Virginia's HC&SA has been responsible for only 0.35% of this year-to-date growth.
- ◆ The overall national economy also experienced a bit of a slowdown in April as total nonfarm payroll increased by only 160,000. This represents the worst one-month job gain for the national economy since March 2015. Regardless, the nation's total nonfarm payroll still grew by 1.9% over the past year.

Data in Brief

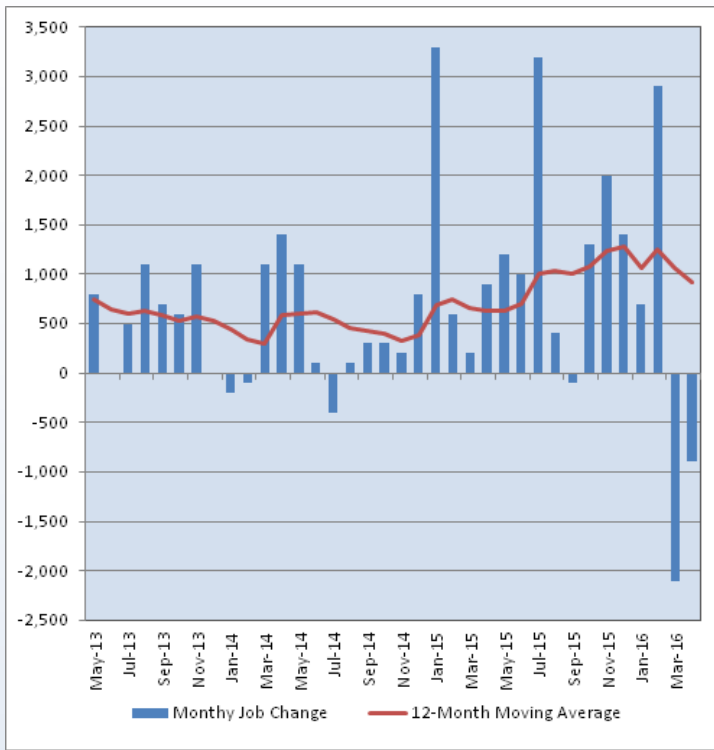
Seasonally Adjusted*	Employment, in Thousands				Growth Rate, Annualized		
	Apr. 2015	Jan. 2016	Mar. 2016	Apr. 2016	12 Month	3 Month	1 Month
Nonfarm, Total							
Virginia	3,823.7	3,901.5	3,919.1	3,907.1	2.2%	0.6%	-3.6%
National	141,223.0	143,314.0	143,755.0	143,915.0	1.9%	1.7%	1.3%
Health Care & Social Assistance							
Virginia	415.7	426.8	427.6	426.7	2.6%	-0.1%	-2.5%
National	18,450.5	18,919.4	19,010.1	19,048.3	3.2%	2.8%	2.4%
All Other Nonfarm							
Virginia	3,408.0	3,474.7	3,491.5	3,480.4	2.1%	0.7%	-3.7%
National	122,772.5	124,394.6	124,744.9	124,866.7	1.7%	1.5%	1.2%

Preliminary estimates are italicized

*Seasonally adjusted data are adjusted by the Bureau of Labor Statistics to account for weather, holidays and other seasonal changes. Economists use seasonally adjusted data to reveal underlying trends over time. This series uses seasonally adjusted data exclusively. When comparing data in this series to other HWDC series, or publications from other sources, it is important to note whether the data reported have been seasonally adjusted.

Virginia HC&SA Employment

Figure 1: Monthly Change in Employment in Virginia’s Health Care & Social Assistance Sector, Seasonally Adjusted.



According to the preliminary data released on Friday, May 20, 2016 by the U.S. Department of Labor, Bureau of Labor Statistics, Virginia’s Health Care & Social Assistance (HC&SA) sector experienced its second consecutive month of significant job losses. After losing 2,100 jobs in March, Virginia’s HC&SA sector experienced an additional loss of 900 jobs in April. These job losses over the past two months have nearly eliminated all of the employment gains generated by this sector so far this year. In 2016, Virginia’s HC&SA sector has only created 600 new jobs. At the same point in 2015, this sector had already created 5,000 jobs throughout the state.

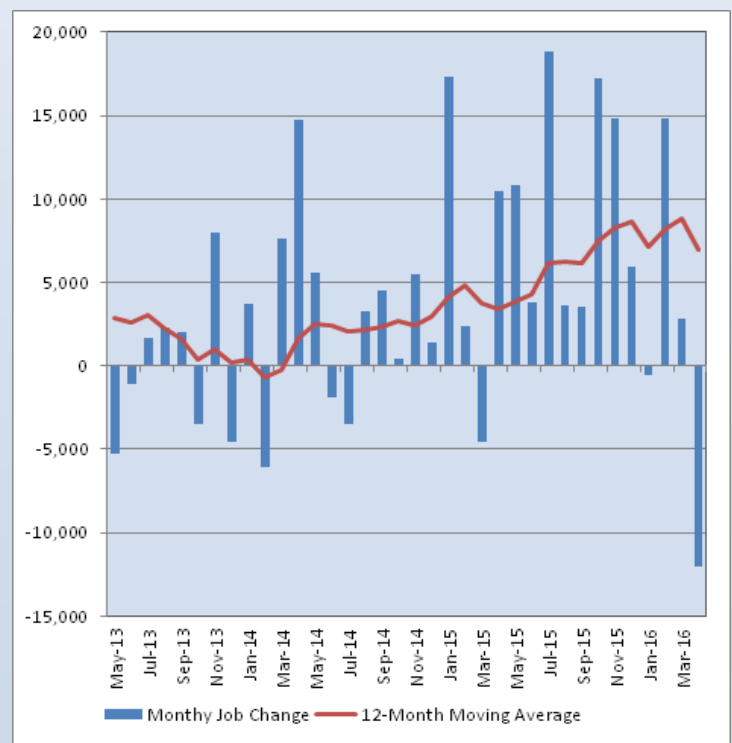
With another employment decline in April, the 12-month moving average of the level change in Virginia’s HC&SA employment fell once again. Over the past 12 months, Virginia’s HC&SA sector has now created an average of 917 jobs per month. This figure represents the lowest monthly average for the state’s HC&SA sector since June 2015. Despite this slowdown, however, employment still grew by 2.6% in the past 12 months.

Virginia Employment

According to preliminary estimates, Virginia’s total nonfarm payroll experienced its worst single month of job loss in more than six years in April as employment fell by 12,000 during the month. This decline represents a one-month annualized employment growth rate of -3.6%. Despite this decline, Virginia’s overall economy has still created 5,600 jobs over the past three months. However, even this three-month employment gain amounts to just a 0.6% annualized growth rate, which is well below the comparable growth rate for the overall national economy.

The long-term growth of Virginia’s total nonfarm payroll remains more impressive as its 12-month employment growth rate is currently 2.2%, which is above the overall national average. This growth represents an average of 6,950 jobs created per month over the past year. This figure is down considerably from March, when the 12-month moving average for the level change in Virginia’s total nonfarm payroll reached 8,825. In fact, April’s result represents the lowest level for the 12-month employment moving average for the state’s overall economy since September 2015.

Figure 2: Monthly Change in Employment in Virginia’s Total Non-farm Payroll, Seasonally Adjusted.

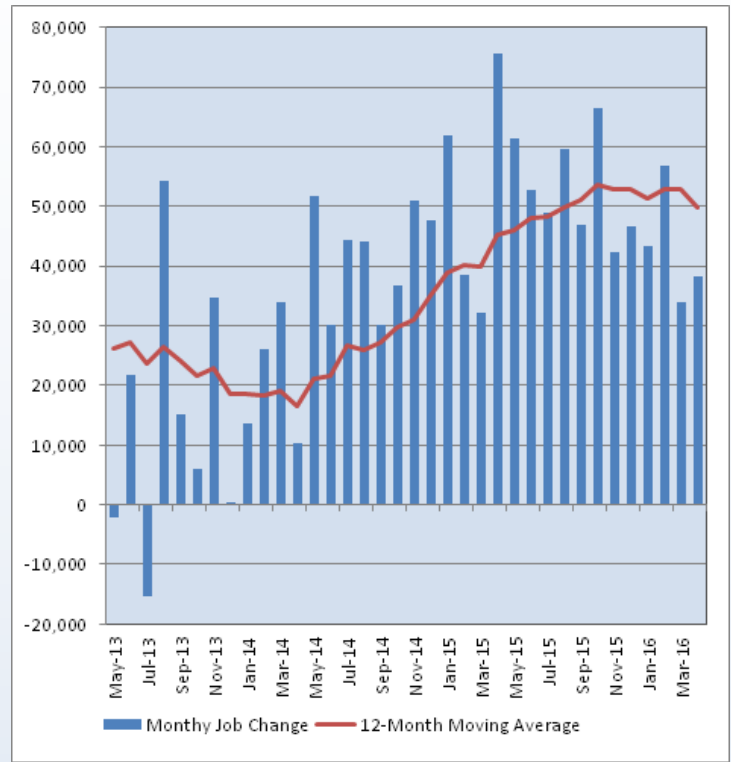


National Employment

After creating only 34,000 new jobs in March, its lowest one-month employment gain in one year, the national HC&SA sector experienced only a small employment boost in April as just 38,200 HC&SA jobs were produced across the country during the month. This gain represents a one-month annualized employment growth rate of 2.4%, which is below both its three-month and 12-month employment growth rates. So far in 2016, the national HC&SA sector has created a total of 172,300 jobs. Virginia's HC&SA sector has been responsible for only 0.35% of this overall employment growth. At the same point in 2015, Virginia's HC&SA sector had been responsible for 2.4% of the nation's year-to-date HC&SA employment growth.

The overall national economy also experienced relatively weak employment growth in April as total nonfarm payroll only increased by 160,000 during the month, which represents a one-month annualized employment growth rate of 1.3%. This also represents the lowest monthly employment gain in the nation's total nonfarm payroll since March 2015. On the other hand, its current 12-month employment growth rate is somewhat more impressive at 1.9%.

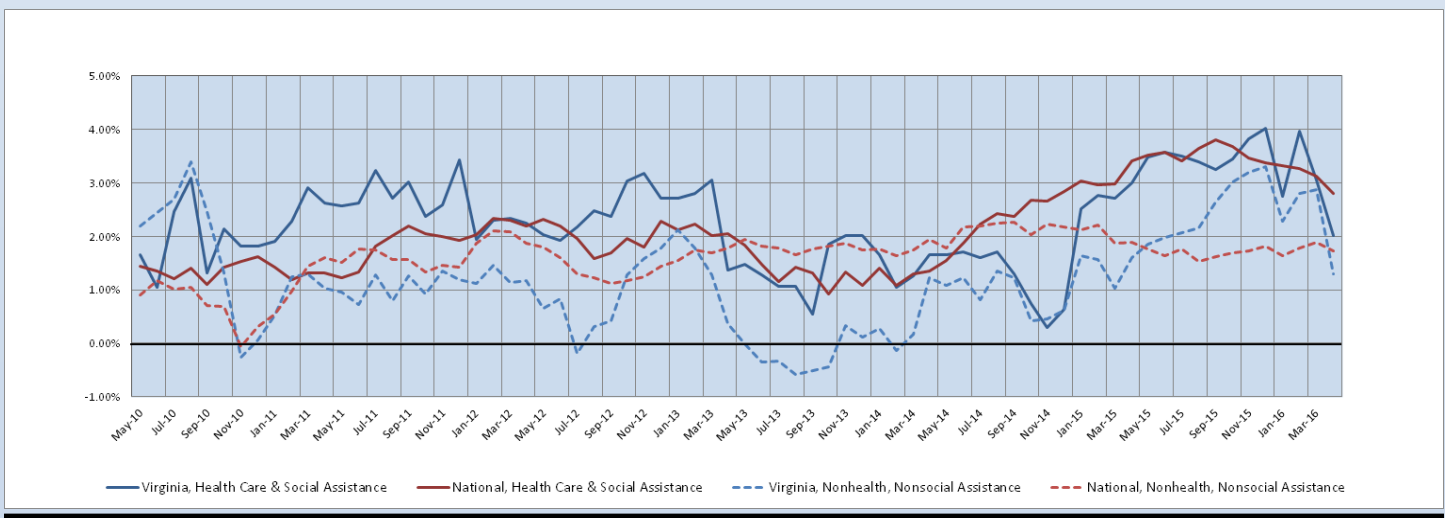
Figure 3: Monthly Change in Employment in National Health Care & Social Assistance Sector, Seasonally Adjusted



State Employment Growth

After reaching a nearly eight-year high of 4.01% in December 2015, the six-month moving average of employment growth rate in Virginia's HC&SA sector has fallen by almost half to just 2.02% in April. This current figure represents the lowest value for the six-month employment growth rate moving average for Virginia's HC&SA sector since December 2014. The decline for Virginia's total nonfarm payroll has been even more precipitous. After reaching its own five-year high of 3.30% in December 2015 as well, the six-month moving average of the employment growth rate in Virginia's total nonfarm payroll has fallen by 60% to 1.30%, which represents a one-year low. Meanwhile, the comparable moving averages for the national HC&SA sector and total nonfarm payroll fell to 2.80% and 1.72%, respectively, during the month of April.

Figure 4: Six-Month Moving Average, Employment Growth, Seasonally Adjusted



Healthcare Workforce
Data Center

Perimeter Center
9960 Mayland Drive, Suite 300
Henrico, VA 23233-1463

Phone: (804) 367-2115
Fax: (804) 527-4434
E-mail: hwdc@dhp.virginia.gov

www.dhp.virginia.gov/hwdc/

HWDC Staff:

Elizabeth Carter, Ph.D. <i>Executive Director</i>	Yetty Shobo, Ph.D. <i>Deputy Director</i>
Laura Jackson <i>Operations Manager</i>	Christopher Coyle <i>Research Assistant</i>

Follow us on. . .

Tumblr: <http://vahwdc.tumblr.com/>

About the Data

Data in this report are from the US Department of Labor, Bureau of Labor Statistics' Current Employment Statistics program. The CES program surveys about 143,000 businesses and government agencies monthly. Unless otherwise noted, this series uses seasonally-adjusted data that removes seasonal variations related to weather, holidays, weekends, seasons and other predictable variations. This allows us to better examine underlying trends in the labor market. Data from recent months are preliminary and subject to revision in future releases from the CES. Revisions will be reported in future editions of this series. Unless otherwise noted, the CES data presented in this series:

Includes:

- ◆ Data on employed individuals drawing a paycheck (payroll employees).
- ◆ All employees, regardless of role, occupation or hours worked.
- ◆ HC&SA employees in the private sector only.
- ◆ Persons employed by health professionals in private practice.
- ◆ Both government and private sector workers in nonfarm employment data.

Does not include:

- ◆ Self-employed workers or volunteers, including health professionals in private practice.
- ◆ HC&SA employees in the public sector. (These are counted as government workers in monthly reports).
- ◆ Information on hours worked or the quality of employment.
- ◆ Government workers in HC&SA level data. (Government workers, regardless of occupation and role, are classified as public sector employees).

The Department of Health Professions Healthcare Workforce Data Center works to improve the data collection and measurement of Virginia's healthcare workforce through regular assessment of workforce supply and demand issues among the 80 professions and 350,000 practitioners licensed in Virginia by DHP.

The HWDC collects data on Virginia's licensed health professionals through surveys completed during the online license renewal and application process. Survey results and data may be accessed on our website: www.dhp.virginia.gov/hwdc/.

The HWDC also provides a series of Virginia Healthcare Workforce Briefs based on data collected by the US Department of Labor's Bureau of Labor Statistics and the US Department of Commerce' Bureau of Economic Analysis.

Virginia Healthcare Workforce Briefs:

Series 1: State & National Employment (Monthly)

Series 2: Virginia Regional Employment (Monthly)

Series 3: Income & Compensation (Quarterly)