



# Virginia Healthcare Workforce Briefs

Indicators from the Bureau of Labor Statistics'  
Current Employment Statistics Survey  
**Series 1: State & National Employment**

Series 1, Issue 7

July 2012

## Highlights

- ◆ According to preliminary estimates, Health Care & Social Assistance (HC&SA) employment in Virginia grew by 1,300 jobs in June, an increase of 0.33% month over month.
- ◆ May preliminary estimates for Virginia HC&SA employment were revised upward by 300 jobs to 391,900, turning preliminary estimates of 200 jobs lost in May to a gain of 100.
- ◆ YTD, Virginia's HC&SA sector added 6,500 jobs through June, an annualized rate of 3.39%, up from a revised 5,200 jobs and 3.26% annualized growth over the first 4 months.
- ◆ June is the first month HC&SA job growth outpaced non-HC&SA growth in Virginia since March. The HC&SA sector accounted for 30% of Virginia's YTD job growth through June, down from 51.5% in the first quarter.
- ◆ YTD, Virginia accounted for 3.6% of job growth in the national HC&SA sector, down from 4.6% through the 1st quarter.

### Inside this Brief:

Jobs Created	2
Employment Growth Rate	2
Share of Employment	3
Industry Distribution	3
About the Data	4

Data in the report is seasonally adjusted, and includes employees of private firms only. Self-employed persons, including health professionals in private practice, are not included.

## Data in Brief

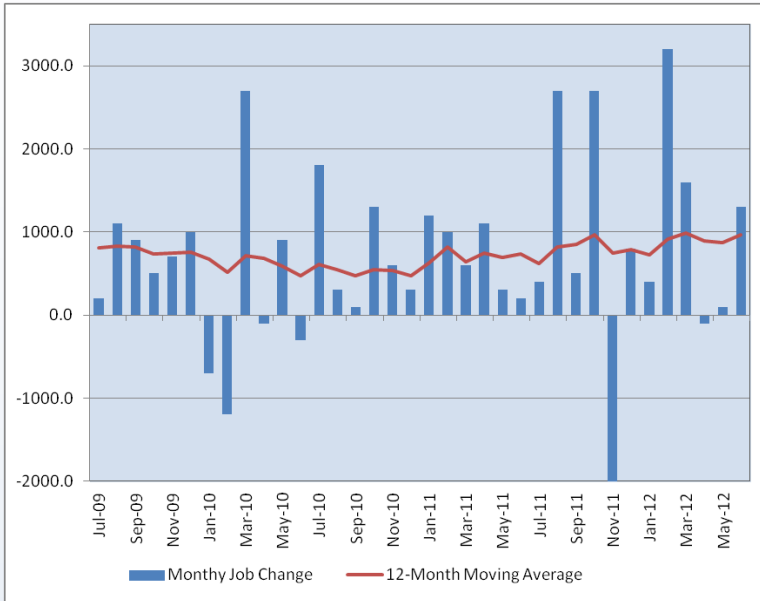
Seasonally Adjusted*	Employment, in Thousands				Growth Rate, Annualized		
	Jun 2011	Mar 2012	May 2012	Jun 2012	12 month	3 month	1 month
<b>Nonfarm, Total</b>							
Virginia	3,675.0	3,712.8	3,721.1	3,724.4	1.3%	1.3%	1.1%
National	131,311.0	132,863.0	133,008.0	133,088.0	1.4%	0.7%	0.7%
<b>Health &amp; Social Assistance</b>							
Virginia	381.5	391.8	391.8	393.1	3.0%	1.3%	4.1%
National	16,622.4	16,913.4	16,967.9	16,979.3	2.1%	1.6%	0.8%
<b>All Other Nonfarm</b>							
Virginia	3,293.5	3,321.0	3,329.3	3,331.3	1.1%	1.2%	0.7%
National	114,688.6	115,949.6	116,040.1	116,108.7	1.2%	0.5%	0.7%

P: Preliminary Results

\*Seasonally adjusted data is adjusted by the Bureau of Labor Statistics to account for weather, holidays and other seasonal changes. Economists use seasonally adjusted data to reveal underlying trends over time. This series uses seasonally adjusted data exclusively. When comparing data in this series to other HWDC series, or publications from other sources, it is important to note whether the data reported has been seasonally adjusted.

## Jobs Created

**Figure 1: Monthly Change in Employment in Virginia's Health Care & Social Assistance Sector, Seasonally Adjusted.**



According to preliminary data released July 20, 2012 by the US Department of Labor, Bureau of Labor Statistics, Virginia's HC&SA sector added 1,300 payroll jobs in May. May's preliminary estimates were revised upward by 300, erasing a preliminary loss of 200 jobs in May, making June the 2nd consecutive month of growth for the sector. Revisions generally occur due to delayed responses from smaller establishments.

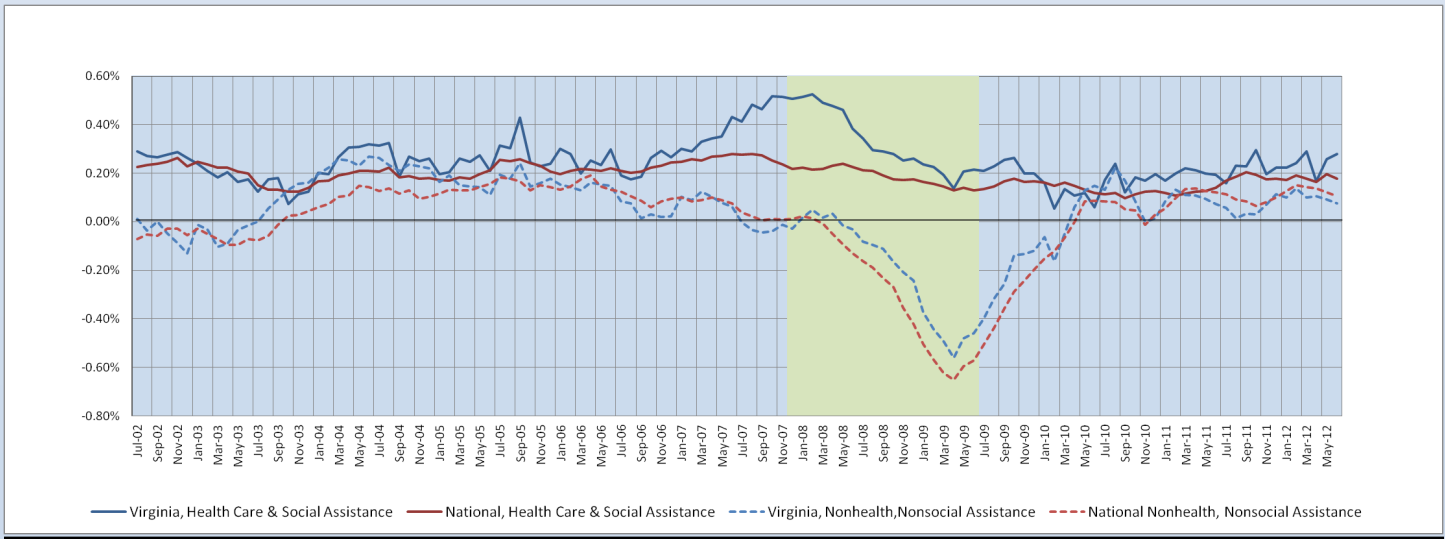
YTD growth rose to 6,500 jobs added, a 3.39% annualized rate. The sector accounted for 30% of all of Virginia's 2012 job growth through May, and 23% over the prior 12 months.

Virginia's HC&SA sector added an average of 967 jobs each month over the past 12 months, compared to 733 jobs in the prior 12 month period. Additionally, the 12-month moving average rose by 92 jobs from a revised 875 jobs per month in May. June is the first month the 12-month moving average has risen since March when it hit a 3-year peak of 992 jobs per month.

## Employment Growth Rate

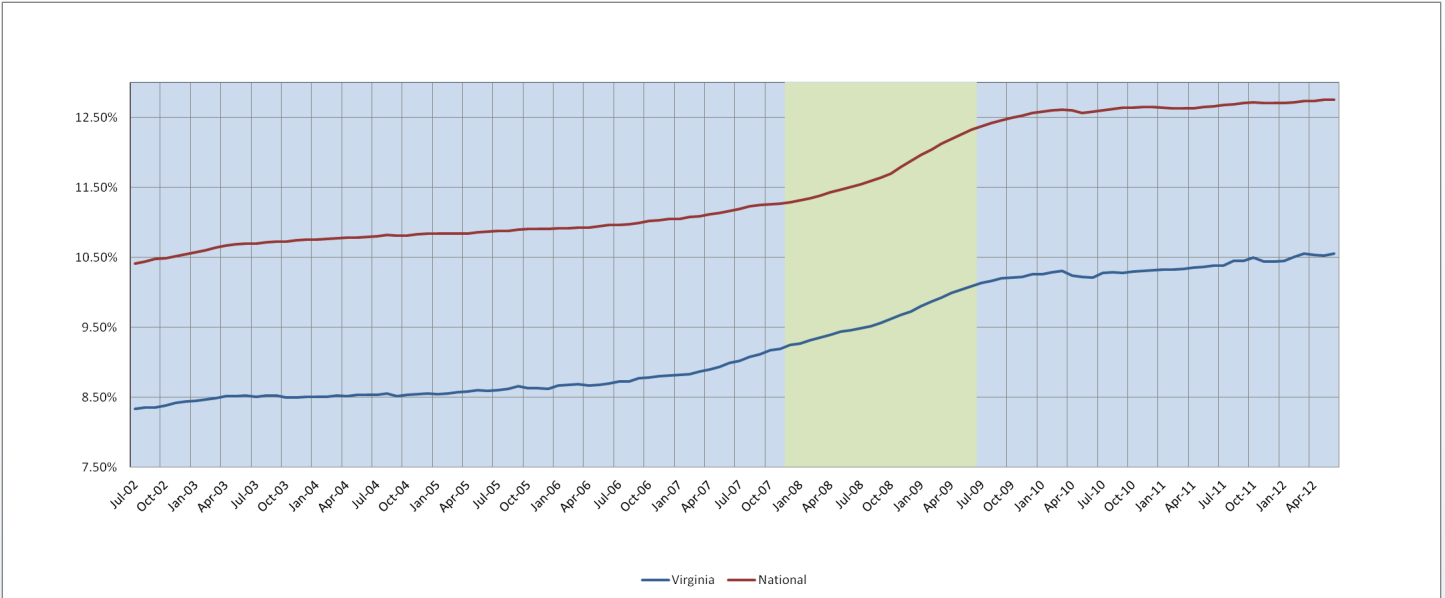
Virginia's HC&SA sector experienced especially strong growth just prior to the 2007-2009 recession. This strong growth continued into the beginning of the recession before stabilizing close to the national rate of growth in the sector in the second half of 2009. As 6-month moving averages indicate in Figure 2, Virginia's HC&SA payrolls have tended to grow more quickly than national growth in the sector and more quickly than Virginia's non-HC&SA payroll growth. In June, payrolls in Virginia's HC&SA sector grew by 0.33% according to preliminary data, compared to 0.07% growth in the sector nationally and compared to a 0.06% gain in Virginia's non-HC&SA payrolls. Additionally, upward revisions to May estimates resulted in a 0.03% gain for the month, compared to a slight preliminary loss. YTD, Virginia's HC&SA sector has grown at an annualized rate of 3.4%, compared to 2.14% for the sector nationally and 0.92% in Virginia's non-HC&SA payrolls.

**Figure 2: 6-month Moving Average, Employment Growth (Seasonally Adjusted).**



## Share of Employment

**Figure 3: The Health Care and Social Assistance Sector’s Share of Nonfarm Employment, Seasonally Adjusted.**



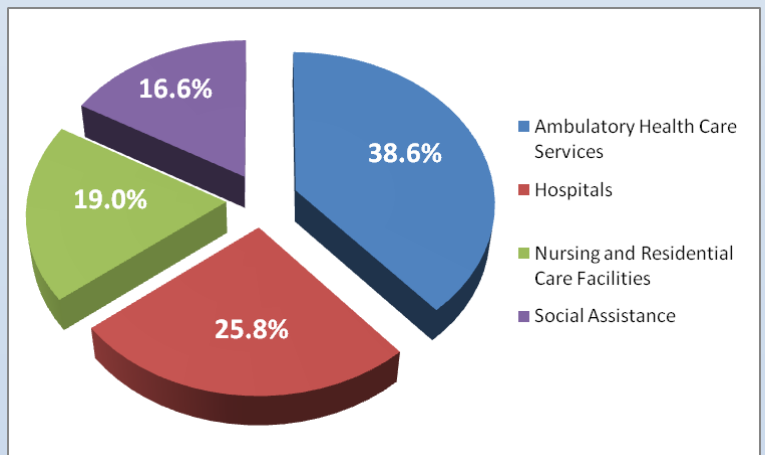
In June Virginia’s HC&SA sector resumed its trend of gaining a growing share of Virginia’s employment. According to preliminary estimates for June the HC&SA sector accounted for 10.55% of all payroll jobs in Virginia, a growth rate of 0.24% from revised May figures. Revisions to May estimates resulted in Virginia’s HC&SA sector holding onto 10.53% of Virginia jobs, higher than previously estimated but still a decline over April figures. Year-to-date, the HC&SA sector has captured an additional 0.16% share of Virginia’s payroll jobs. Virginia’s HC&SA sector is still small compared to the sector nationally. The HC&SA sector accounted for 12.76% of national payroll jobs in June. Virginia has captured 3.63% of national growth in the HC&SA sector year-to-date, down from a 2012 peak of 4.60% through the first quarter.

## Industry Distribution

Ambulatory services’ share of HC&SA employment fell to 38.6% in June from 39.1% in May. Nursing & Residential Care facilities gained a 0.4% share, rising to 19%. Importantly, these figures include employed workers only. They do not include self-employed practitioners or volunteers.

Ambulatory health care services includes offices of independent practitioners, outpatient care centers, diagnostic laboratories, home health services and other ambulatory services. Hospitals include general, surgical, specialty and mental health hospitals. Nursing and residential care facilities include nursing homes, community care facilities and mental health related residential facilities. Social assistance includes individual and family services, food, housing and other relief services, vocational rehabilitation and child day care services.

**Figure 4: Distribution of Virginia Health Care & Social Assistance Employment by Sector**



Healthcare Workforce  
Data Center

Perimeter Center  
9960 Mayland Drive, Suite 300  
Henrico, VA 23233-1463

Phone: (804) 367-2115  
Fax: (804) 527-4434  
E-mail: [hwdc@dhp.virginia.gov](mailto:hwdc@dhp.virginia.gov)

[www.dhp.virginia.gov/hwdc/](http://www.dhp.virginia.gov/hwdc/)

*Virginia Healthcare Workforce Briefs are produced by  
**Justin Crow, MPA,**  
HWDC Research Analyst*

Follow us on. . .

Tumblr: <http://vahwdc.tumblr.com/>

The Department of Health Professions Healthcare Workforce Data Center works to improve the data collection and measurement of Virginia's healthcare workforce through regular assessment of workforce supply and demand issues among the 80 professions and 350,000 practitioners licensed in Virginia by DHP.

The HWDC collects data on Virginia's licensed health professionals through surveys completed during the online license renewal and application process. Survey results and data may be accessed on our website: [www.dhp.virginia.gov/hwdc/](http://www.dhp.virginia.gov/hwdc/).

The HWDC also provides a series of Virginia Healthcare Workforce Briefs based on data collected by the US Department of Labor's Bureau of Labor Statistics and the US Department of Commerce' Bureau of Economic Analysis.

Virginia Healthcare Workforce Briefs:

Series 1: State & National Employment (Monthly)

Series 2: Virginia Regional Employment (Monthly)

Series 3: Income & Compensation (Quarterly)

---

## About the Data

Data in this report is from the US Department of Labor, Bureau of Labor Statistics' Current Employment Statistics program. The CES program surveys about 140,000 businesses and government agencies monthly. Unless otherwise noted, this series uses seasonally-adjusted data that removes seasonal variations related to weather, holidays, weekends, seasons and other predictable variations. This allows us to better examine underlying trends in the labor market. Data from recent months is preliminary and subject to revision in future releases from the CES. Revisions will be reported in future editions of this series. Unless otherwise noted, the CES data presented in this series:

### Includes:

- ◆ Data on employed individuals drawing a paycheck (payroll employees).
- ◆ All employees, regardless of role, occupation or hours worked.
- ◆ HC&SA employees in the private sector only.
- ◆ Persons employed by health professionals in private practice.
- ◆ Both government and private sector workers in nonfarm employment data.

### Does not include:

- ◆ Self-employed workers or volunteers, including health professionals in private practice.
  - ◆ HC&SA employees in the public sector. (These are counted as government workers in monthly reports. Approximately 54,500 of Virginia's public sector workers worked in the HC&SA sector in 2010 at the federal, state and local levels).
  - ◆ Information on hours worked or the quality of employment.
  - ◆ Government workers in HC&SA level data. (Government workers, regardless of occupation and role, are classified as public sector employees).
-