



# Virginia Healthcare Workforce Briefs

Indicators from the Bureau of Labor Statistics'  
Current Employment Statistics Survey  
**Series 1: State & National Employment**

Series 1, Issue 18

June 2013

## Highlights

- ◆ According to preliminary estimates, Virginia's Health Care & Social Assistance (HC&SA) sector lost 2,100 jobs in May. This represents the worst month for HC&SA job growth since April 2000.
- ◆ After an upward revision to preliminary estimates of 500 jobs, Virginia's HC&SA sector added 3,200 jobs in April, making it the best month for HC&SA job growth since January 1999.
- ◆ Despite the weak employment numbers in May, Virginia's HC&SA sector has still produced 1,100 jobs so far in 2013. In addition, the sector has grown at a year-over-year rate of 3.1%, which is faster than both the national HC&SA sector and Virginia's overall economy.
- ◆ Unlike Virginia's health care industry, the national HC&SA sector managed to add 11,800 jobs in May. Although this only represents a one-month annualized growth rate of 0.8%, the national HC&SA sector has still managed positive job growth for each of the past 44 months.
- ◆ Virginia's overall economy mirrored trends seen in the HC&SA sector. In May, preliminary estimates indicate that Virginia's total nonfarm payroll decreased by 1,700 jobs, representing a one-month annualized growth rate of -0.5%.

### Inside this Brief:

Virginia HC&SA Employment	2
National HC&SA Employment	2
Share of Employment Growth	3
Employment Growth	3
About the Data	4

Data in the report is seasonally adjusted, and includes employees of private firms only. Self-employed persons, including health professionals in private practice, are not included.

## Data in Brief

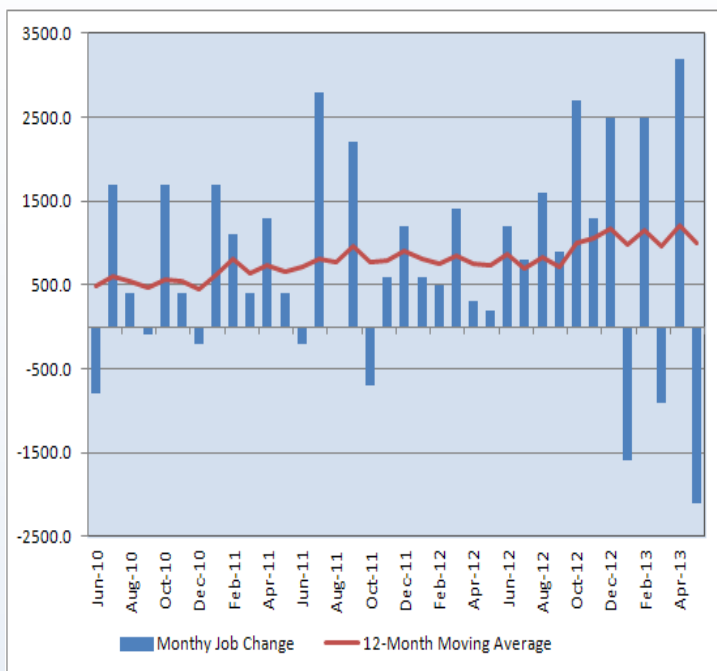
Seasonally Adjusted*	Employment, in Thousands				Growth Rate, Annualized		
	May 2012	Feb. 2012	Apr. 2012	May 2013	12 Month	3 Month	1 Month
<b>Nonfarm, Total</b>							
Virginia	3,717.7	3,761.2	3,767.6	3,765.9	1.3%	0.5%	-0.5%
National	133,522.0	135,171.0	135,462.0	135,637.0	1.6%	1.4%	1.6%
<b>Health &amp; Social Assistance</b>							
Virginia	390.4	402.3	404.6	402.5	3.1%	0.2%	-6.1%
National	16,936.1	17,204.4	17,261.4	17,273.2	2.0%	1.6%	0.8%
<b>All Other Nonfarm</b>							
Virginia	3,327.3	3,358.9	3,363.0	3,363.4	1.1%	0.5%	0.1%
National	116,585.9	117,966.6	118,200.6	118,363.8	1.5%	1.4%	1.7%

Preliminary estimates are italicized

\*Seasonally adjusted data is adjusted by the Bureau of Labor Statistics to account for weather, holidays and other seasonal changes. Economists use seasonally adjusted data to reveal underlying trends over time. This series uses seasonally adjusted data exclusively. When comparing data in this series to other HWDC series, or publications from other sources, it is important to note whether the data reported has been seasonally adjusted.

## Virginia HC&SA Employment

**Figure 1: Monthly Change in Employment in Virginia's Health Care & Social Assistance Sector, Seasonally Adjusted.**



According to preliminary data released on June 21, 2013 by the US Department of Labor, Bureau of Labor Statistics, Virginia's HC&SA sector lost 2,100 jobs in May. However, these losses were mitigated by the upward revision in April's preliminary estimate for HC&SA job growth by 500 jobs. With this revision, Virginia's HC&SA sector added 3,200 jobs in April.

Over the past several months, Virginia's HC&SA sector has experienced significant swings in employment. Whereas April represented the strongest month for HC&SA employment in nearly 15 years, May's preliminary numbers were the worst for the sector in over 13 years.

Virginia's HC&SA sector has lost jobs in three of the first five months of 2013, but it has still managed to add 1,110 year-to-date jobs. In addition, the 12-month moving average remains above 1,000 jobs monthly and has more than doubled since June 2010.

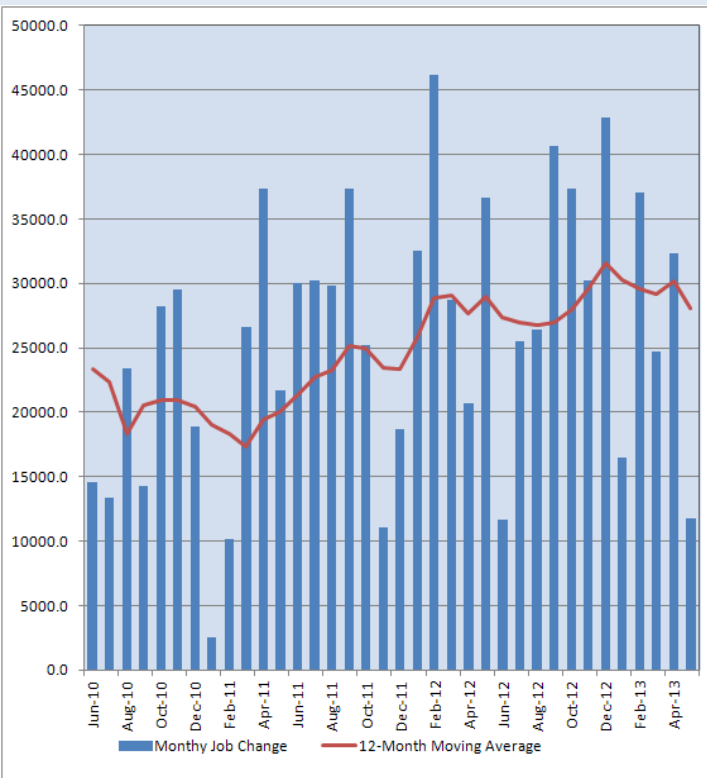
## National HC&SA Employment

Whereas Virginia's HC&SA sector experienced a particularly rough month in terms of job growth, the national HC&SA sector managed to produce another month of positive employment gains. According to preliminary estimates, the nation's health care sector added 11,800 jobs in May. Although this was the weakest month for the nation's HC&SA sector so far in 2013, it still represents the 44th consecutive month of positive employment growth.

So far in 2013, the national HC&SA sector has added 122,300 jobs, which is 24,000 more jobs than during the same time period last year. Virginia has been responsible for 0.9% of this year-to-date growth. In May 2012, Virginia's share of year-to-date growth in the national HC&SA sector was 1.8%, twice its current share.

With May's relatively weak results, the 12-month moving average of the monthly employment change in the national HC&SA sector fell by more than 2,000 jobs to 28,092 jobs per month. This represents the lowest value for the moving average in 2013. In addition, the moving average is down by 2.88% from the year-ago period, although it has still increased by over 40% in the past two years.

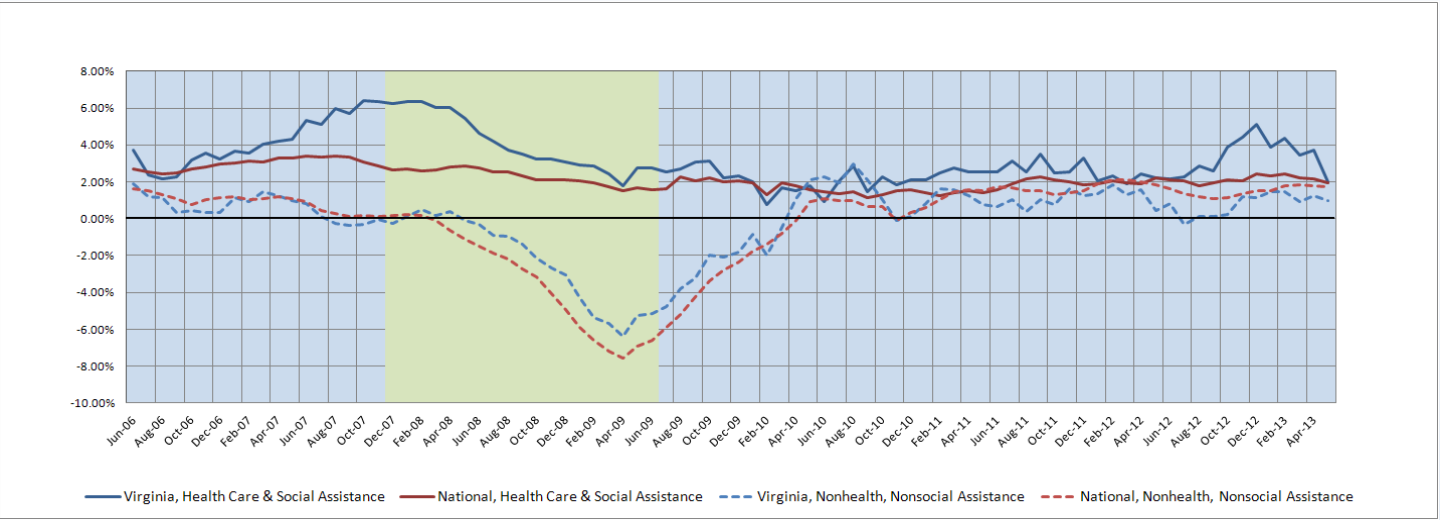
**Figure 2: Monthly Change in Employment in National Health Care & Social Assistance Sector, Seasonally Adjusted.**



## Employment Growth

With the loss of 2,100 jobs in May, the six-month moving average of employment growth in Virginia's HC&SA sector fell from 3.70% to 2.03%, a drop of 45% in just one month. The decline has been even more dramatic since the beginning of the year; after reaching a post-recessionary high of 5.09% in December 2012, the six-month employment growth moving average has declined by 60%. Given this decline, the six-month moving average of Virginia's HC&SA sectoral employment growth has rapidly converged toward the national average, which is currently at 1.94%. The six-month moving average of employment growth in the national HC&SA sector has also declined since reaching its own post-recession high of 2.41% in December, but that drop has been a relatively modest 20%.

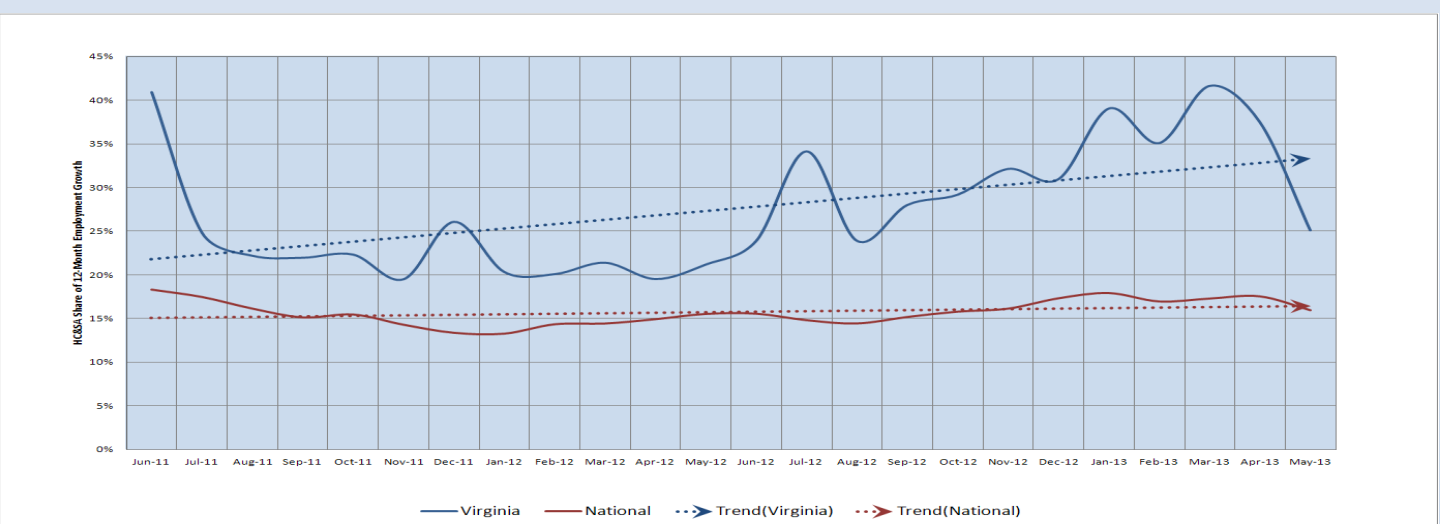
**Figure 3: Six-Month Moving Average, Employment Growth, Seasonally Adjusted**



## Share of Employment Growth

Along with its six-month employment growth rate moving average, Virginia's HC&SA share of total nonfarm payroll employment growth experienced a significant decline in May. After falling from a two-year high of 42% to 38% in April, Virginia's HC&SA share of 12-month employment growth fell to just 25% in May, which represents a one-month decline of 34%. The national HC&SA share of 12-month employment growth also declined in May from 18% to 16%, but this represents a more modest 11% drop in share. Both of these shares are at their lowest values of 2013, but the two-year trend line in the HC&SA share of 12-month employment growth remains positive for Virginia and the national economy.

**Figure 4: HC&SA Share of 12-Month Employment Growth, Seasonally Adjusted**



## Healthcare Workforce Data Center

Perimeter Center  
9960 Mayland Drive, Suite 300  
Henrico, VA 23233-1463

Phone: (804) 367-2115  
Fax: (804) 527-4434  
E-mail: [hwdc@dhp.virginia.gov](mailto:hwdc@dhp.virginia.gov)

[www.dhp.virginia.gov/hwdc/](http://www.dhp.virginia.gov/hwdc/)

*Virginia Healthcare Workforce Briefs are produced by*  
**Justin Crow, MPA**  
*HWDC Research Analyst*  
&  
**Christopher Coyle**  
*HWDC Research Assistant*

Follow us on. . .

Tumblr: <http://vahwdc.tumblr.com/>

The Department of Health Professions Healthcare Workforce Data Center works to improve the data collection and measurement of Virginia's healthcare workforce through regular assessment of workforce supply and demand issues among the 80 professions and 350,000 practitioners licensed in Virginia by DHP.

The HWDC collects data on Virginia's licensed health professionals through surveys completed during the online license renewal and application process. Survey results and data may be accessed on our website: [www.dhp.virginia.gov/hwdc/](http://www.dhp.virginia.gov/hwdc/).

The HWDC also provides a series of Virginia Healthcare Workforce Briefs based on data collected by the US Department of Labor's Bureau of Labor Statistics and the US Department of Commerce' Bureau of Economic Analysis.

Virginia Healthcare Workforce Briefs:

Series 1: State & National Employment (Monthly)

Series 2: Virginia Regional Employment (Monthly)

Series 3: Income & Compensation (Quarterly)

---

## About the Data

Data in this report is from the US Department of Labor, Bureau of Labor Statistics' Current Employment Statistics program. The CES program surveys about 140,000 businesses and government agencies monthly. Unless otherwise noted, this series uses seasonally-adjusted data that removes seasonal variations related to weather, holidays, weekends, seasons and other predictable variations. This allows us to better examine underlying trends in the labor market. Data from recent months is preliminary and subject to revision in future releases from the CES. Revisions will be reported in future editions of this series. Unless otherwise noted, the CES data presented in this series:

### Includes:

- ◆ Data on employed individuals drawing a paycheck (payroll employees).
- ◆ All employees, regardless of role, occupation or hours worked.
- ◆ HC&SA employees in the private sector only.
- ◆ Persons employed by health professionals in private practice.
- ◆ Both government and private sector workers in nonfarm employment data.

### Does not include:

- ◆ Self-employed workers or volunteers, including health professionals in private practice.
  - ◆ HC&SA employees in the public sector. (These are counted as government workers in monthly reports. Approximately 54,500 of Virginia's public sector workers worked in the HC&SA sector in 2010 at the federal, state and local levels).
  - ◆ Information on hours worked or the quality of employment.
  - ◆ Government workers in HC&SA level data. (Government workers, regardless of occupation and role, are classified as public sector employees).
-