



Virginia Healthcare Workforce Briefs

Indicators from the Bureau of Labor Statistics'
Current Employment Statistics Survey
Series 1: State & National Employment

Series 1, Issue 22

November 2013

Inside this Brief:

Virginia HC&SA Employment	2
National HC&SA Employment	2
Employment Growth	3
Share of Employment Growth	3
About the Data	4

Data in the report is seasonally adjusted, and includes employees of private firms only. Self-employed persons, including health professionals in private practice, are not included.

Highlights

- ◆ According to preliminary estimates, Virginia's Health Care & Social Assistance (HC&SA) sector lost 1,800 jobs in October.
- ◆ Due to the federal government shutdown, there were no preliminary estimates for Virginia's HC&SA employment in September. However, final estimates indicate that the sector added 2,600 jobs during the month.
- ◆ Preliminary estimates for Virginia's HC&SA employment in August were revised upward by 1,600 jobs. With this revision, Virginia's HC&SA sector added 2,300 jobs in August.
- ◆ According to preliminary estimates, the national HC&SA sector added 8,700 jobs in September and 17,500 in October. In addition, the national HC&SA sector added 50,600 jobs in August after final revisions were made. This represents the largest monthly employment gain since August 2009.
- ◆ Virginia's total nonfarm payroll fell by 5,400 jobs in October, which represents its second-largest decrease so far in 2013. However, Virginia has experienced positive employment growth over the previous three months thanks to an increase of 8,700 jobs during August and September.

Data in Brief

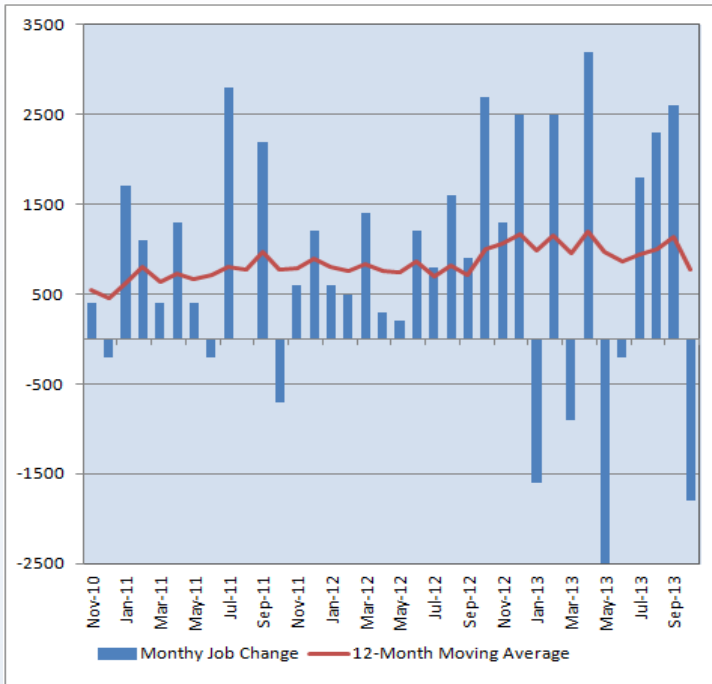
Seasonally Adjusted*	Employment, in Thousands				Growth Rate, Annualized		
	Oct. 2012	July 2013	Sept. 2013	Oct. 2013	12 Month	3 Month	1 Month
Nonfarm, Total							
Virginia	3,740.0	3,764.2	3,772.9	3,767.5	0.7%	0.4%	-1.7%
National	134,225.0	135,949.0	136,350.0	136,554.0	1.7%	1.8%	1.8%
Health & Social Assistance							
Virginia	397.6	403.7	408.6	406.8	2.3%	3.1%	-5.2%
National	17,077.8	17,307.5	17,366.8	17,384.3	1.8%	1.8%	1.2%
All Other Nonfarm							
Virginia	3,342.4	3,360.5	3,364.3	3,360.7	0.5%	0.0%	-1.3%
National	117,147.2	118,641.5	118,983.2	119,169.7	1.7%	1.8%	1.9%

Preliminary estimates are italicized

*Seasonally adjusted data is adjusted by the Bureau of Labor Statistics to account for weather, holidays and other seasonal changes. Economists use seasonally adjusted data to reveal underlying trends over time. This series uses seasonally adjusted data exclusively. When comparing data in this series to other HWDC series, or publications from other sources, it is important to note whether the data reported has been seasonally adjusted.

Virginia HC&SA Employment

Figure 1: Monthly Change in Employment in Virginia's Health Care & Social Assistance Sector, Seasonally Adjusted.



According to preliminary data released on November 22, 2013 by the U.S. Department of Labor, Bureau of Labor Statistics, Virginia's HC&SA sector lost 1,800 jobs in October. There was no preliminary estimate for September, but final estimates indicate that the sector added 2,600 jobs during the month. Meanwhile, preliminary estimates for August were revised upward by 1,600 jobs. In total, nearly 5,000 HC&SA jobs were added in August and September.

The loss of 1,800 jobs in October was the second-worst decline in the HC&SA sector so far in 2013. Virginia's HC&SA sector has experienced considerable volatility in 2013, with employment losses in five out of the first ten months of the year. Nevertheless, the sector has added 5,400 jobs year-to-date.

With October's employment losses, the 12-month moving average of Virginia's HC&SA employment fell to 767 monthly jobs, which represents its lowest level since September 2012.

National HC&SA Employment

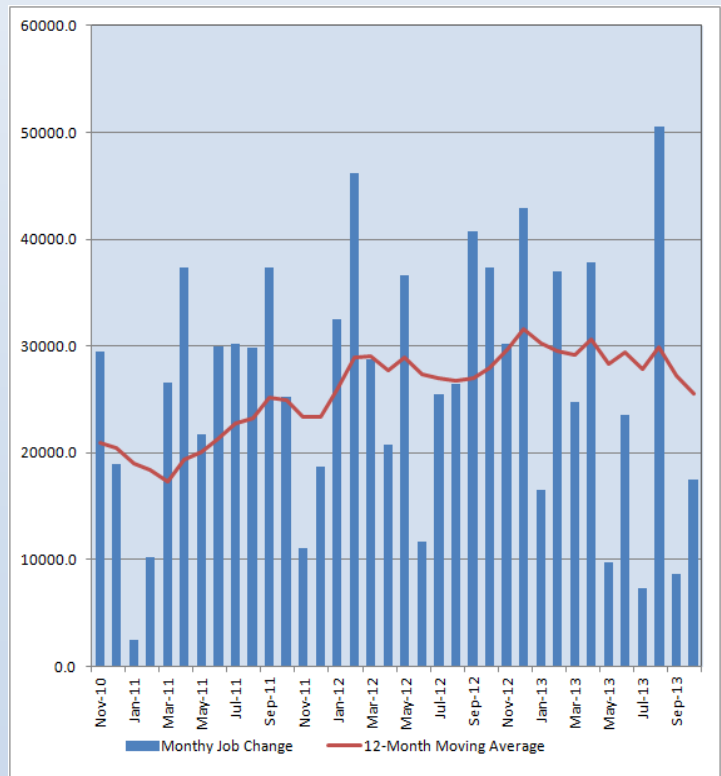
According to preliminary estimates, the national HC&SA sector added 8,700 jobs in September and 17,500 jobs in October. Meanwhile, the national HC&SA sector added 50,600 jobs in August, which represents the strongest month for employment in the nation's health care industry since August 2009.

Despite the increases in employment over the past three months, the 12-month moving average of national HC&SA employment fell to 25,542 monthly jobs, which represents its lowest level in nearly two years.

Year to date, the national HC&SA sector has added 233,400 jobs. This represents a modest decline in employment growth relative to previous years—the national HC&SA sector added 306,400 jobs through the first ten months of 2012 and 250,900 jobs for the same time period in 2011.

With 5,400 jobs added so far in 2013, Virginia's HC&SA sector has been responsible for 2.3% of national employment growth in the health care industry. Although this represents a 31% decrease from September, it is still considerably higher than the lows experienced earlier in the year.

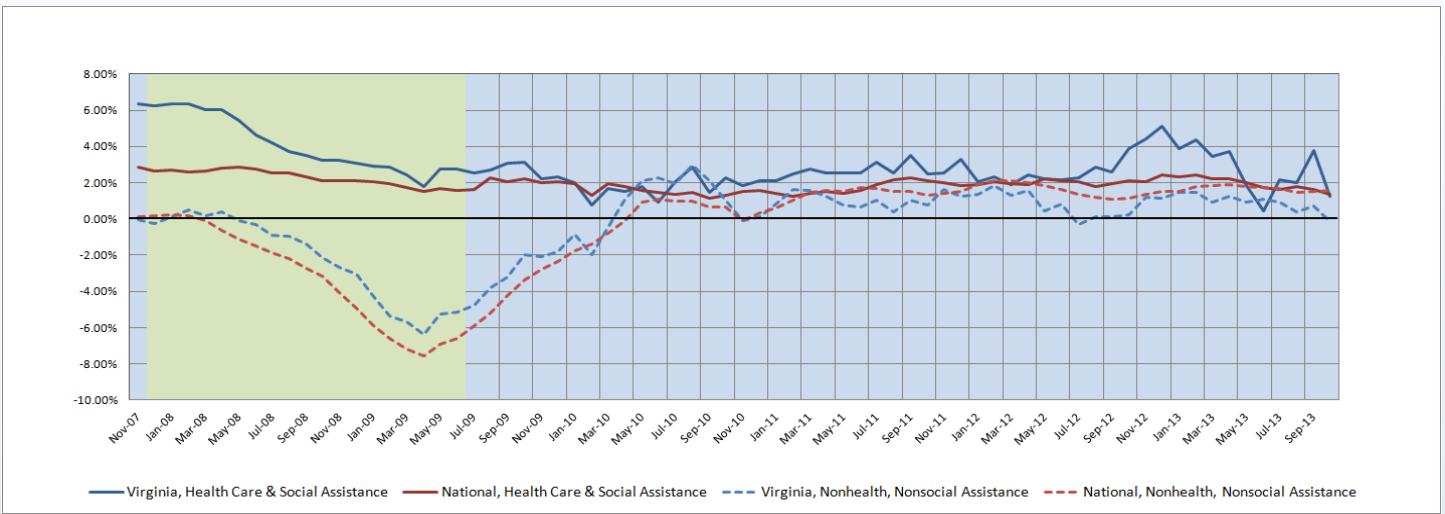
Figure 2: Monthly Change in Employment in National Health Care & Social Assistance Sector, Seasonally Adjusted.



Employment Growth

The six-month moving average of Virginia’s HC&SA employment growth fell significantly in October, declining by 67% to 1.3%. This represents the second-lowest level in 2013 and the third-lowest value in the past three years. Despite this decline, Virginia’s HC&SA sector has outpaced the rest of the state’s economy. The six-month moving average of Virginia’s non-HC&SA employment fell into negative territory in October for the first time since July 2012. The six-month moving average of national HC&SA employment also fell in October, but this decline was a relatively modest 15%. Meanwhile, the national non-HC&SA sector saw a slight uptick in its six-month employment moving average, increasing from 1.5% to 1.6%.

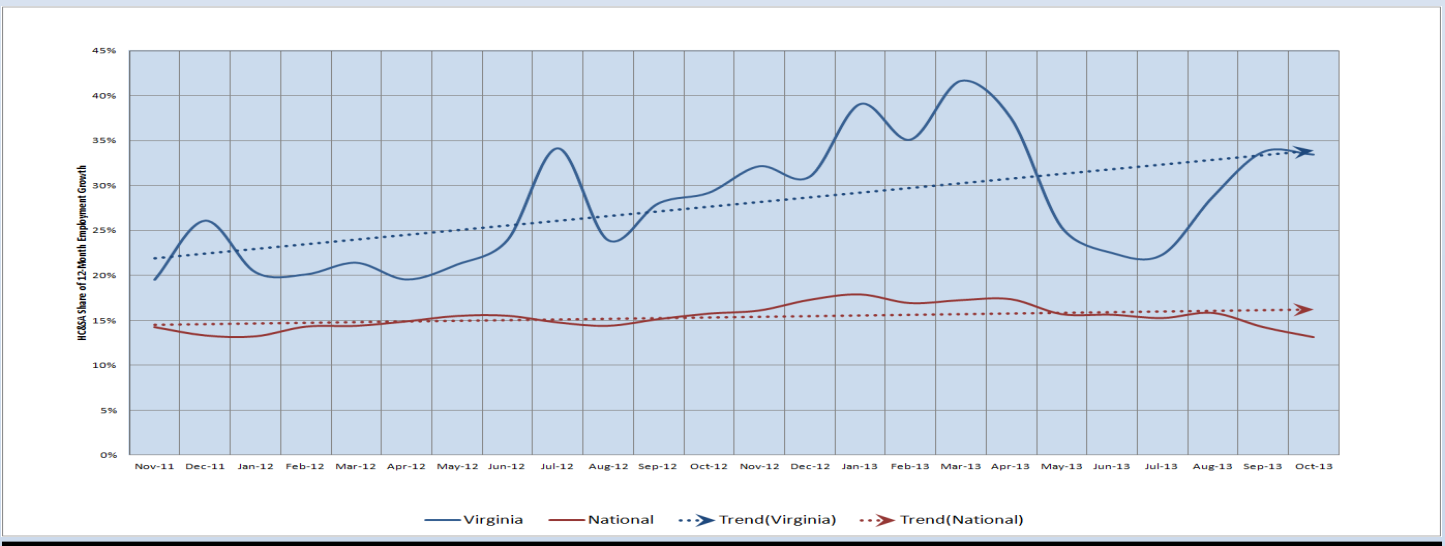
Figure 3: Six-Month Moving Average, Employment Growth, Seasonally Adjusted



Share of Employment Growth

Over the past two months, the share of Virginia’s employment growth that is attributable to the HC&SA sector has stabilized to approximately one-third. Although Virginia’s HC&SA share did decline slightly to 33% in October, this is still 50% higher than the year-to-date lows seen during the summer. This is also far higher than the national average, where the HC&SA sector is currently responsible for 13% of all employment growth over the past 12 months. Unlike Virginia’s HC&SA sector, the national HC&SA employment share has been falling in recent months. In fact, since the beginning of the year, the national HC&SA share has fallen from 18% to 13%, a decline of 28%.

Figure 4: HC&SA Share of 12-Month Employment Growth, Seasonally Adjusted



Healthcare Workforce
Data Center

Perimeter Center
9960 Mayland Drive, Suite 300
Henrico, VA 23233-1463

Phone: (804) 367-2115
Fax: (804) 527-4434
E-mail: hwdc@dhp.virginia.gov

www.dhp.virginia.gov/hwdc/

Virginia Healthcare Workforce Briefs are produced by
Justin Crow, MPA
HWDC Research Analyst
&
Christopher Coyle
HWDC Research Assistant

Follow us on. . .

Tumblr: <http://vahwdc.tumblr.com/>

The Department of Health Professions Healthcare Workforce Data Center works to improve the data collection and measurement of Virginia's healthcare workforce through regular assessment of workforce supply and demand issues among the 80 professions and 350,000 practitioners licensed in Virginia by DHP.

The HWDC collects data on Virginia's licensed health professionals through surveys completed during the online license renewal and application process. Survey results and data may be accessed on our website: www.dhp.virginia.gov/hwdc/.

The HWDC also provides a series of Virginia Healthcare Workforce Briefs based on data collected by the US Department of Labor's Bureau of Labor Statistics and the US Department of Commerce' Bureau of Economic Analysis.

Virginia Healthcare Workforce Briefs:

Series 1: State & National Employment (Monthly)

Series 2: Virginia Regional Employment (Monthly)

Series 3: Income & Compensation (Quarterly)

About the Data

Data in this report is from the US Department of Labor, Bureau of Labor Statistics' Current Employment Statistics program. The CES program surveys about 140,000 businesses and government agencies monthly. Unless otherwise noted, this series uses seasonally-adjusted data that removes seasonal variations related to weather, holidays, weekends, seasons and other predictable variations. This allows us to better examine underlying trends in the labor market. Data from recent months is preliminary and subject to revision in future releases from the CES. Revisions will be reported in future editions of this series. Unless otherwise noted, the CES data presented in this series:

Includes:

- ◆ Data on employed individuals drawing a paycheck (payroll employees).
- ◆ All employees, regardless of role, occupation or hours worked.
- ◆ HC&SA employees in the private sector only.
- ◆ Persons employed by health professionals in private practice.
- ◆ Both government and private sector workers in nonfarm employment data.

Does not include:

- ◆ Self-employed workers or volunteers, including health professionals in private practice.
 - ◆ HC&SA employees in the public sector. (These are counted as government workers in monthly reports. Approximately 54,500 of Virginia's public sector workers worked in the HC&SA sector in 2010 at the federal, state and local levels).
 - ◆ Information on hours worked or the quality of employment.
 - ◆ Government workers in HC&SA level data. (Government workers, regardless of occupation and role, are classified as public sector employees).
-