



Virginia Healthcare Workforce Briefs

Indicators from the Bureau of Labor Statistics'

Current Employment Statistics Survey

Series 1: State & National Employment

Series 1, Issue 21

September 2013

Inside this Brief:

Virginia HC&SA Employment 2

National HC&SA Employment 2

Employment Growth 3

Share of Employment Growth 3

About the Data 4

Data in the report is seasonally adjusted, and includes employees of private firms only. Self-employed persons, including health professionals in private practice, are not included.

Highlights

- ◆ According to preliminary estimates, Virginia's Health Care & Social Assistance (HC&SA) sector added 700 jobs in August.
- ◆ July's preliminary estimate for employment in Virginia's HC&SA sector was revised upward by 400 jobs. With this revision, Virginia's HC&SA sector added 1,800 jobs in July.
- ◆ For the first time in 2013, Virginia's HC&SA sector experienced employment gains for consecutive months. Year to date, the sector has added 3,000 jobs, which is less than half the 6,600 jobs that were gained during the first eight months of 2012.
- ◆ The national HC&SA sector had its strongest month so far this year in August, adding 38,300 jobs. Year to date, the national HC&SA sector has produced 202,500 jobs. Virginia has been responsible for 1.48% of this increase.
- ◆ Despite August's employment gains in Virginia's HC&SA sector, total non-farm payroll decreased by 1,900 across the state. This represents the third time in four months in which Virginia's total nonfarm payroll has decreased. However, thanks to strong gains in February and April, Virginia's total non-farm payroll has still increased by 16,500 jobs so far in 2013.

Data in Brief

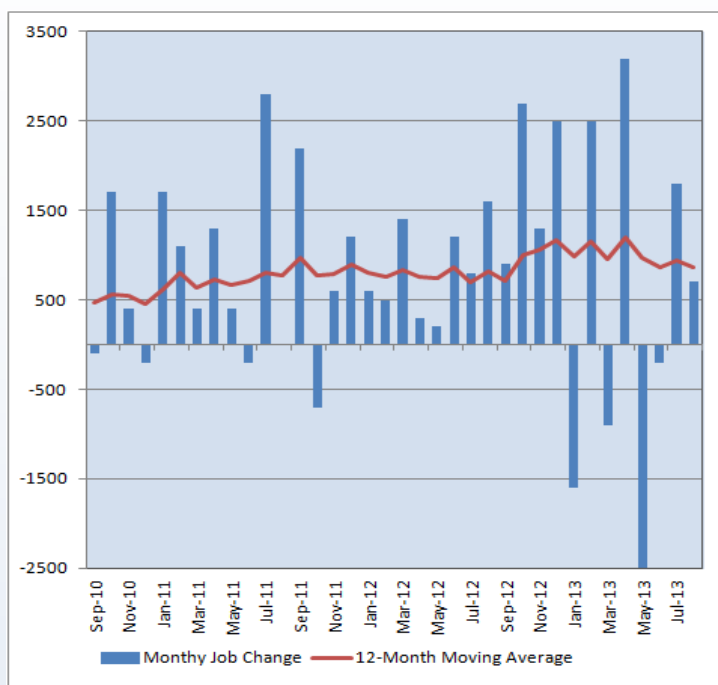
Seasonally Adjusted*	Employment, in Thousands				Growth Rate, Annualized		
	Aug. 2012	May 2013	July 2013	Aug. 2013	12 Month	3 Month	1 Month
Nonfarm, Total							
Virginia	3,729.0	3,763.8	3,764.2	3,762.3	0.9%	-0.2%	-0.6%
National	133,927.0	135,688.0	135,964.0	136,133.0	1.6%	1.3%	1.5%
Health & Social Assistance							
Virginia	394.0	402.1	403.7	404.4	2.6%	2.3%	2.1%
National	16,999.7	17,276.6	17,315.1	17,353.4	2.1%	1.8%	2.7%
All Other Nonfarm							
Virginia	3,335.0	3,361.7	3,360.5	3,357.9	0.7%	-0.5%	-0.9%
National	116,927.3	118,411.4	118,648.9	118,779.6	1.6%	1.2%	1.3%

Preliminary estimates are italicized

*Seasonally adjusted data is adjusted by the Bureau of Labor Statistics to account for weather, holidays and other seasonal changes. Economists use seasonally adjusted data to reveal underlying trends over time. This series uses seasonally adjusted data exclusively. When comparing data in this series to other HWDC series, or publications from other sources, it is important to note whether the data reported has been seasonally adjusted.

Virginia HC&SA Employment

Figure 1: Monthly Change in Employment in Virginia's Health Care & Social Assistance Sector, Seasonally Adjusted.



According to preliminary data released on September 20, 2013 by the U.S. Department of Labor, Bureau of Labor Statistics, Virginia's HC&SA sector added 700 jobs in August. Meanwhile, July's preliminary estimate for Virginia's HC&SA employment was revised upward by 400 jobs. Over the past two months, 2,500 jobs have been added in Virginia's HC&SA sector.

For the first time this year, Virginia's HC&SA sector experienced employment gains in consecutive months, helping to mitigate somewhat the recent monthly employment volatility in the sector. With these gains over the past two months, Virginia's HC&SA sector has managed to erase all of the employment losses that were experienced in May.

Despite this month's job gains, the 12-month moving average of the HC&SA employment change decreased by 75 jobs to 867 jobs per month. The current 12-month moving average is near the lowest levels seen in 2013 and well below its year-to-date high of 1,200 jobs per month in April.

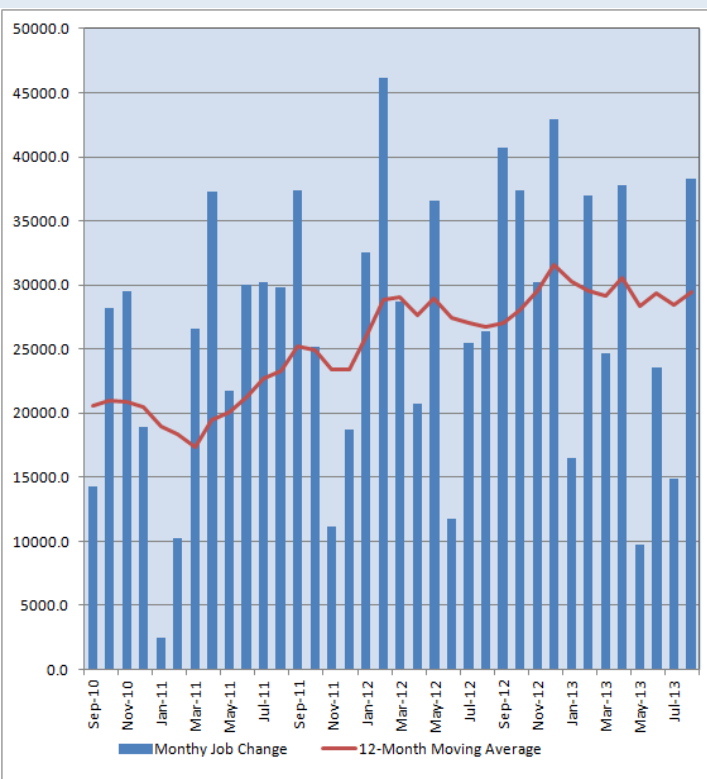
National HC&SA Employment

The national HC&SA sector added 38,300 jobs in August, which represents its strongest monthly performance so far in 2013. Thanks to these strong job gains, the 12-month moving average of the national HC&SA employment change increased by 992 jobs to 29,475 jobs per month in August, reaching its highest level since April.

Year to date, the national HC&SA sector has added 202,500 jobs, which is comparable to the gains seen in previous years. For instance, the national HC&SA sector added 228,300 jobs during the first eight months of 2012, while 188,300 jobs were added during the same time period in 2011.

Although Virginia has added 3,000 HC&SA jobs so far in 2013, the Commonwealth has been responsible for a smaller share of national HC&SA employment growth relative to previous years. Currently, Virginia's share of the year-to-date employment growth in the national HC&SA sector is 1.48%. This is down by more than 60% since August 2011, during which Virginia's HC&SA sector was responsible for nearly 4% of all employment gains in the national HC&SA sector. However, recent developments have been more promising, with Virginia's share rebounding from just 0.33% in June.

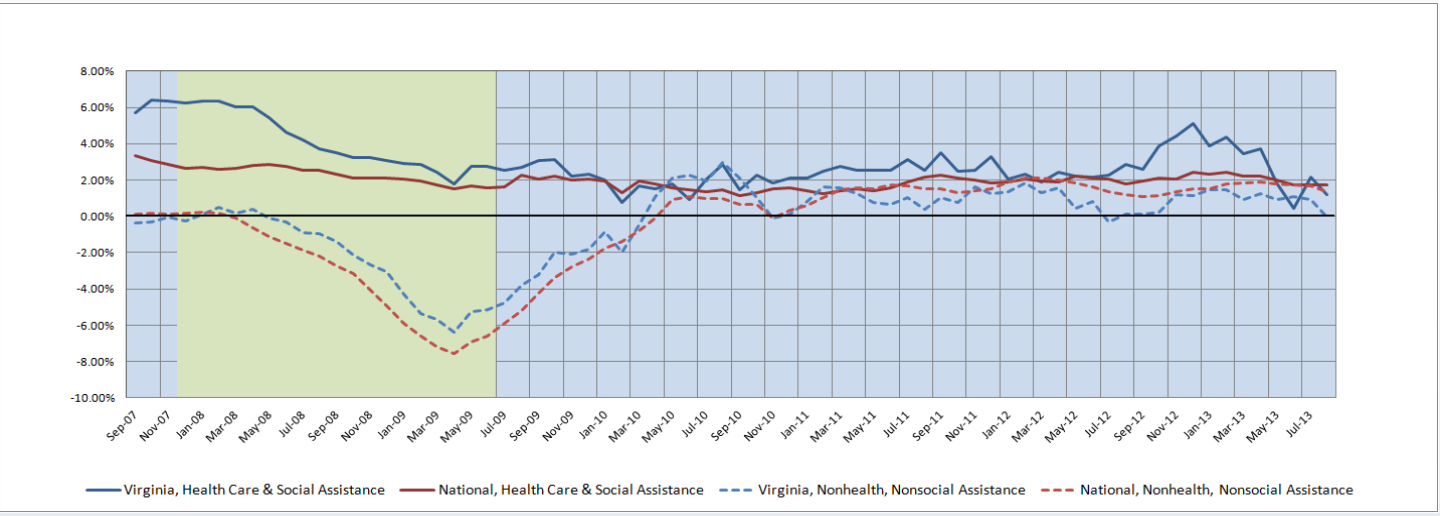
Figure 2: Monthly Change in Employment in National Health Care & Social Assistance Sector, Seasonally Adjusted.



Employment Growth

The six-month moving average of employment growth in Virginia's HC&SA sector fell by 44% in August to 1.20%, reaching its second-lowest value in 2013. Despite this decline, however, employment in Virginia's HC&SA sector has still been very strong relative to the rest of the Commonwealth. In August, the six-month moving average for employment growth in Virginia's non-HC&SA sectors actually dropped into negative territory for the first time in more than a year. Regardless, with Virginia's recent slowdown in its HC&SA sector, the six-month moving average of national HC&SA employment growth has now exceeded Virginia's moving average for three of the past four months, which has not happened since 2010.

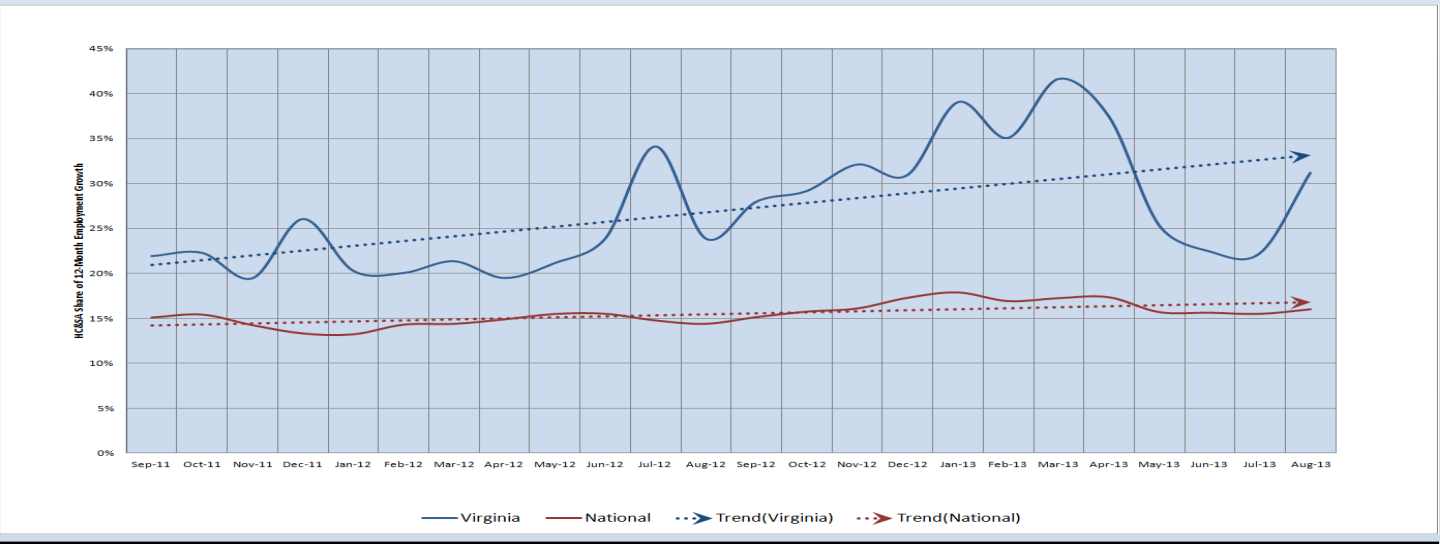
Figure 3: Six-Month Moving Average, Employment Growth, Seasonally Adjusted



Share of Employment Growth

For most of 2013, Virginia's HC&SA sector has experienced declines in its relative share of the Commonwealth's 12-month change in total nonfarm employment growth. After reaching a year-to-date high of 42% in March, Virginia's HC&SA share of total employment growth declined by nearly half to just 22% in June and July, but this trend saw a significant reversal in August. Virginia's HC&SA share of 12-month employment growth rebounded to 31% in August, which represents its highest value in four months. Meanwhile, the national HC&SA share of 12-month employment growth held steady yet again at 16% in August. This is the fourth consecutive month in which the national HC&SA share of 12-month employment growth has not changed, although its share has shown a slight upward trend over the past two years.

Figure 4: HC&SA Share of 12-Month Employment Growth, Seasonally Adjusted



Healthcare Workforce Data Center

Perimeter Center
9960 Mayland Drive, Suite 300
Henrico, VA 23233-1463

Phone: (804) 367-2115
Fax: (804) 527-4434
E-mail: hwdc@dhp.virginia.gov

www.dhp.virginia.gov/hwdc/

Virginia Healthcare Workforce Briefs are produced by
Justin Crow, MPA
HWDC Research Analyst
&
Christopher Coyle
HWDC Research Assistant

Follow us on. . .

Tumblr: <http://vahwdc.tumblr.com/>

The Department of Health Professions Healthcare Workforce Data Center works to improve the data collection and measurement of Virginia's healthcare workforce through regular assessment of workforce supply and demand issues among the 80 professions and 350,000 practitioners licensed in Virginia by DHP.

The HWDC collects data on Virginia's licensed health professionals through surveys completed during the online license renewal and application process. Survey results and data may be accessed on our website: www.dhp.virginia.gov/hwdc/.

The HWDC also provides a series of Virginia Healthcare Workforce Briefs based on data collected by the US Department of Labor's Bureau of Labor Statistics and the US Department of Commerce' Bureau of Economic Analysis.

Virginia Healthcare Workforce Briefs:

Series 1: State & National Employment (Monthly)

Series 2: Virginia Regional Employment (Monthly)

Series 3: Income & Compensation (Quarterly)

About the Data

Data in this report is from the US Department of Labor, Bureau of Labor Statistics' Current Employment Statistics program. The CES program surveys about 140,000 businesses and government agencies monthly. Unless otherwise noted, this series uses seasonally-adjusted data that removes seasonal variations related to weather, holidays, weekends, seasons and other predictable variations. This allows us to better examine underlying trends in the labor market. Data from recent months is preliminary and subject to revision in future releases from the CES. Revisions will be reported in future editions of this series. Unless otherwise noted, the CES data presented in this series:

Includes:

- ◆ Data on employed individuals drawing a paycheck (payroll employees).
- ◆ All employees, regardless of role, occupation or hours worked.
- ◆ HC&SA employees in the private sector only.
- ◆ Persons employed by health professionals in private practice.
- ◆ Both government and private sector workers in nonfarm employment data.

Does not include:

- ◆ Self-employed workers or volunteers, including health professionals in private practice.
 - ◆ HC&SA employees in the public sector. (These are counted as government workers in monthly reports. Approximately 54,500 of Virginia's public sector workers worked in the HC&SA sector in 2010 at the federal, state and local levels).
 - ◆ Information on hours worked or the quality of employment.
 - ◆ Government workers in HC&SA level data. (Government workers, regardless of occupation and role, are classified as public sector employees).
-