



Virginia Healthcare Workforce Briefs

Indicators from the Bureau of Labor Statistics'
Current Employment Statistics Survey
Series 1: State & National Employment

Series 1, Issue 35

December 2014

Highlights

- ◆ According to preliminary estimates, Virginia's Health Care & Social Assistance (HC&SA) sector added 1,300 jobs during the month of November. With this gain, employment in Virginia's HC&SA sector has now increased by 5,700 so far this year.
- ◆ Meanwhile, October's preliminary estimate for Virginia's HC&SA employment was revised downward by 700 jobs. Despite this downward revision, however, Virginia's HC&SA sector still created 1,000 jobs in October.
- ◆ After declining in each of the past three months, Virginia's total nonfarm payroll increased by 11,900 in November. So far in 2014, Virginia's overall economy has produced 16,400 jobs.
- ◆ Monthly job creation in the national HC&SA sector hit a three-month high in November with the addition of 37,200 jobs. Virginia's HC&SA sector was responsible for 3.5% of this increase, its highest monthly share since February.
- ◆ The national economy continued to strengthen in November as total nonfarm payroll increased by 321,000. This represents the largest monthly increase in national employment since January 2012. In addition, the national economy is on pace for its largest annual employment gain in more than a decade.

Inside this Brief:

Virginia HC&SA Employment	2
National HC&SA Employment	2
Employment Growth	3
Long-Term Job Growth	3
About the Data	4

Data in the report is seasonally adjusted, and includes employees of private firms only. Self-employed persons, including health professionals in private practice, are not included.

Data in Brief

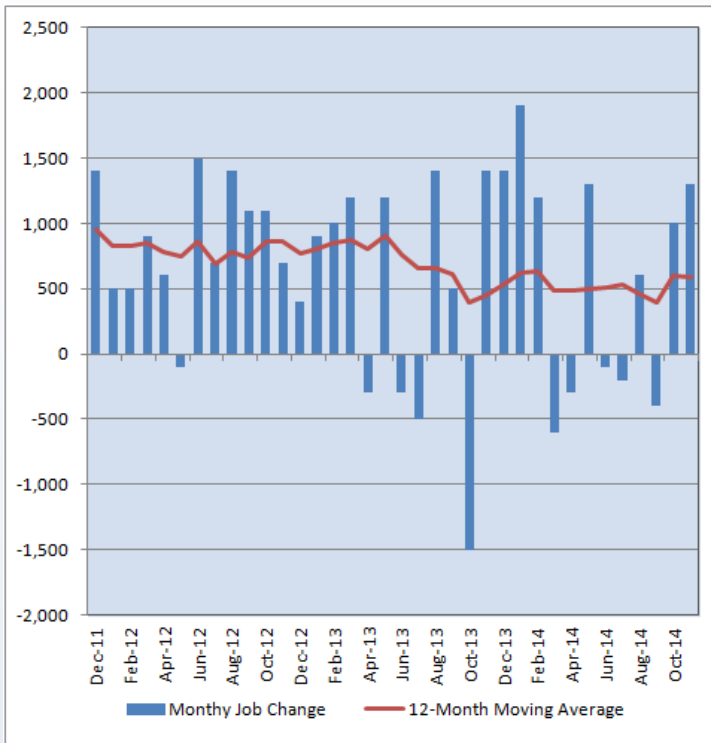
Seasonally Adjusted*	Employment, in Thousands				Growth Rate, Annualized		
	Nov. 2013	Aug. 2014	Oct. 2014	Nov. 2014	12 Month	3 Month	1 Month
Nonfarm, Total							
Virginia	3,769.2	3,783.2	3,772.9	3,784.8	0.4%	0.2%	3.9%
National	137,311.0	139,210.0	139,724.0	140,045.0	2.0%	2.4%	2.8%
Health & Social Assistance							
Virginia	410.1	415.3	415.9	417.2	1.7%	1.8%	3.8%
National	17,874.1	18,145.5	18,201.8	18,239.0	2.0%	2.1%	2.5%
All Other Nonfarm							
Virginia	3,359.1	3,367.9	3,357.0	3,367.6	0.3%	0.0%	3.9%
National	119,436.9	121,064.5	121,522.2	121,806.0	2.0%	2.5%	2.8%

Preliminary estimates are italicized

*Seasonally adjusted data is adjusted by the Bureau of Labor Statistics to account for weather, holidays and other seasonal changes. Economists use seasonally adjusted data to reveal underlying trends over time. This series uses seasonally adjusted data exclusively. When comparing data in this series to other HWDC series, or publications from other sources, it is important to note whether the data reported has been seasonally adjusted.

Virginia HC&SA Employment

Figure 1: Monthly Change in Employment in Virginia’s Health Care & Social Assistance Sector, Seasonally Adjusted.



According to preliminary data released on Friday, December 19, 2014 by the U.S. Department of Labor, Bureau of Labor Statistics, Virginia’s HC&SA sector experienced another month of strong employment gains with the creation of 1,300 new jobs during the month of November. Although October’s preliminary estimate for Virginia’s HC&SA employment was revised downward by 700 jobs, the sector still produced 1,000 jobs during the month. So far in 2014, Virginia’s HC&SA sector has created 5,700 jobs throughout the state.

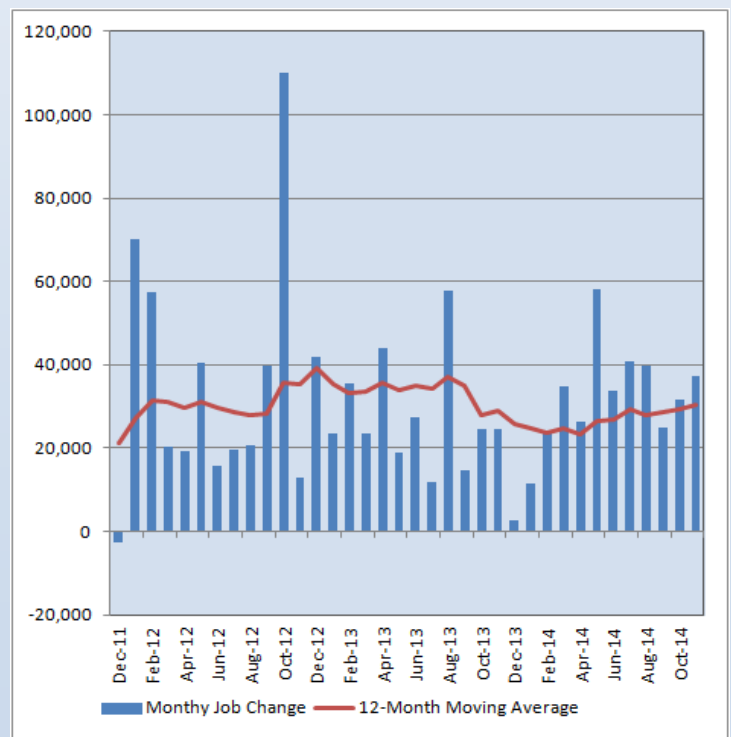
Despite the solid employment gains over the past two months, the 12-month moving average of the level change in Virginia’s HC&SA employment dipped slightly during the month from 600 jobs added per month in October to 592 jobs added per month in November. Regardless, the short-term employment growth in Virginia’s HC&SA sector augurs well for the future: the 1,300 jobs added in November represents a one-month annualized employment growth rate of 3.8%, which far exceeds the 12-month employment growth rate of 1.7%.

National HC&SA Employment

In November, the national HC&SA sector enjoyed yet another strong month of employment growth with an increase of 37,200 jobs, which represents the sector’s highest monthly gain in three months. The national HC&SA sector has been exhibiting a steady improvement in its employment situation throughout 2014, a trend that continued unabated in November. At the beginning of the year, the 12-month moving average of the level change in national HC&SA employment reached a two-year low of 24,667 jobs added per month, but this value increased to 30,408 jobs added per month in November.

A similar trend is occurring in the overall national economy. During November, national total nonfarm payroll increased 321,000, its largest monthly gain in nearly three years. Virginia’s economy contributed positively to this growth during the month with the creation of 11,900 jobs, which represents its first monthly employment increase since July. So far in 2014, total nonfarm payroll across the country has increased by 2.65 million. At this rate, the national economy is on pace for its largest annual employment gain since 1999.

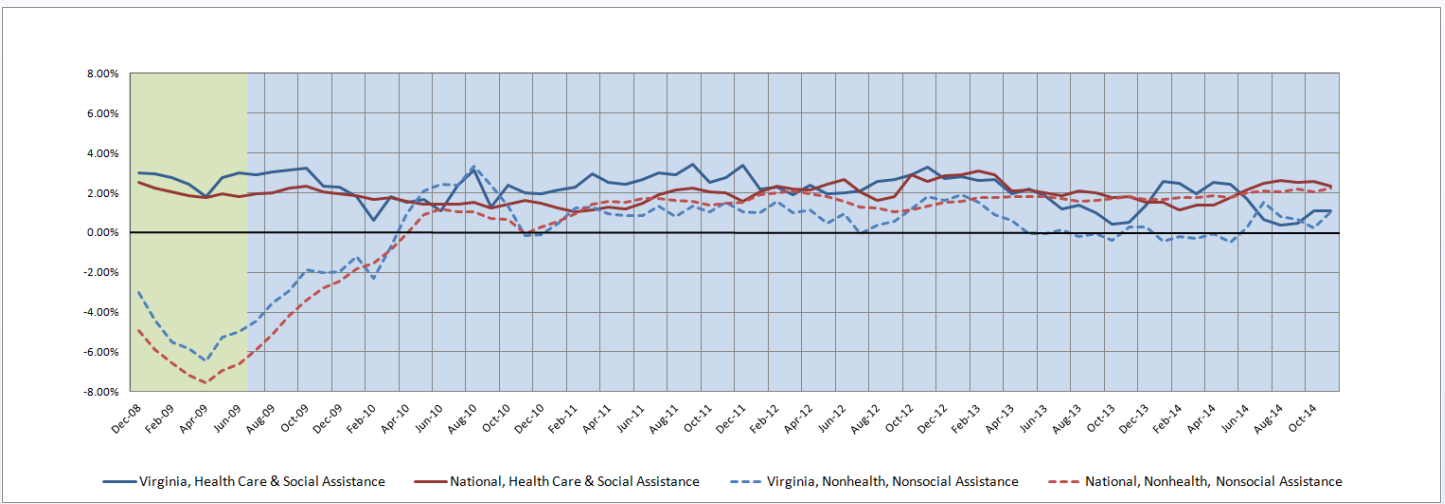
Figure 2: Monthly Change in Employment in National Health Care & Social Assistance Sector, Seasonally Adjusted.



Employment Growth

Thanks in part to November’s strong employment numbers, the six-month moving average of the employment growth rate in the nation’s non-HC&SA sectors reached an eight-year high of 2.24%. However, this value still remains below the corresponding six-month employment growth rate moving average for the national HC&SA sector, which experienced a modest decline to 2.32% in November. Relative to the national economy, Virginia’s employment growth has been somewhat subdued, although the six-month moving average of the employment growth rate in Virginia’s non-HC&SA sectors did reach a four-month high in November of 1.05%. Meanwhile, the six-month employment growth rate moving average for Virginia’s HC&SA sector was 1.08% in November, which represents no change from the previous month.

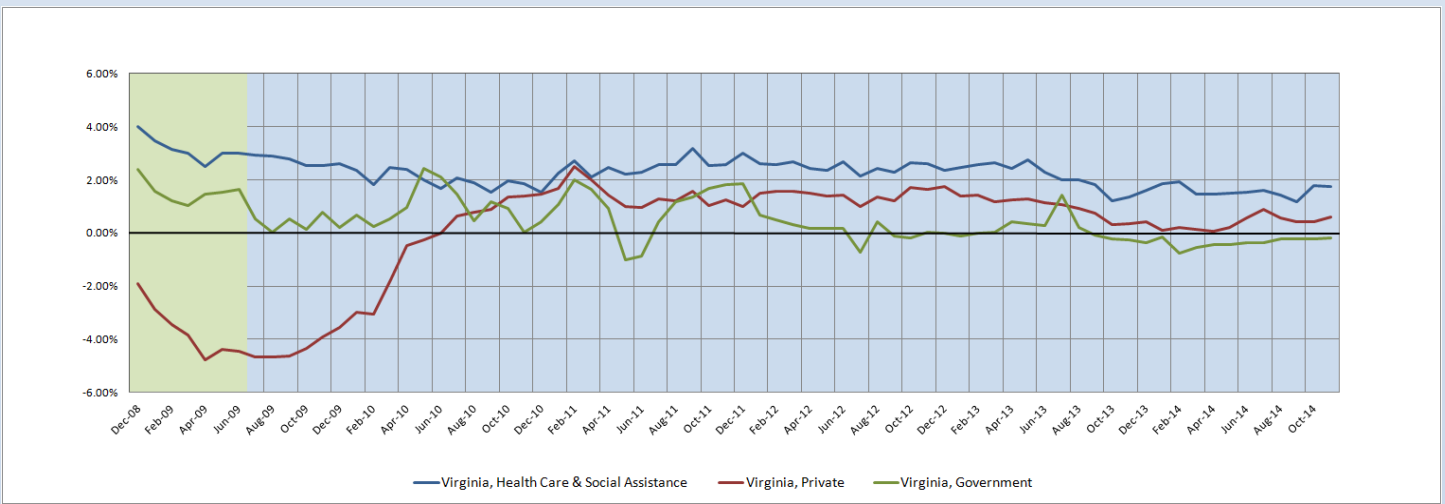
Figure 3: Six-Month Moving Average, Employment Growth, Seasonally Adjusted



Long-Term Employment Growth

The long-term employment growth rate moving averages remained relatively steady in November throughout all the major sectors of Virginia’s economy. The 12-month HC&SA employment growth rate moving average dropped slightly from 1.79% in October to 1.76% in November, but it still remains significantly above the corresponding rates for both Virginia’s private and governmental sectors. The 12-month moving average of the employment growth rate in Virginia’s private sector did experience a modest uptick in November to 0.60%, its highest value since July. The same can be said for Virginia’s governmental sector: its 12-month employment growth rate moving average increased ever so slightly to -0.20% in November. Despite the negative growth rate, this still represents the sector’s highest 12-month moving average since January.

Figure 4: Twelve-Month Moving Average, Employment Growth, Seasonally Adjusted



Healthcare Workforce
Data Center

Perimeter Center
9960 Mayland Drive, Suite 300
Henrico, VA 23233-1463

Phone: (804) 367-2115
Fax: (804) 527-4434
E-mail: hwdc@dhp.virginia.gov

www.dhp.virginia.gov/hwdc/

Virginia Healthcare Workforce Briefs are produced by
Justin Crow, MPA
HWDC Research Analyst
&
Christopher Coyle
HWDC Research Assistant

Follow us on. . .

Tumblr: <http://vahwdc.tumblr.com/>

The Department of Health Professions Healthcare Workforce Data Center works to improve the data collection and measurement of Virginia's healthcare workforce through regular assessment of workforce supply and demand issues among the 80 professions and 350,000 practitioners licensed in Virginia by DHP.

The HWDC collects data on Virginia's licensed health professionals through surveys completed during the online license renewal and application process. Survey results and data may be accessed on our website: www.dhp.virginia.gov/hwdc/.

The HWDC also provides a series of Virginia Healthcare Workforce Briefs based on data collected by the US Department of Labor's Bureau of Labor Statistics and the US Department of Commerce' Bureau of Economic Analysis.

Virginia Healthcare Workforce Briefs:

Series 1: State & National Employment (Monthly)

Series 2: Virginia Regional Employment (Monthly)

Series 3: Income & Compensation (Quarterly)

About the Data

Data in this report is from the US Department of Labor, Bureau of Labor Statistics' Current Employment Statistics program. The CES program surveys about 140,000 businesses and government agencies monthly. Unless otherwise noted, this series uses seasonally-adjusted data that removes seasonal variations related to weather, holidays, weekends, seasons and other predictable variations. This allows us to better examine underlying trends in the labor market. Data from recent months is preliminary and subject to revision in future releases from the CES. Revisions will be reported in future editions of this series. Unless otherwise noted, the CES data presented in this series:

Includes:

- ◆ Data on employed individuals drawing a paycheck (payroll employees).
- ◆ All employees, regardless of role, occupation or hours worked.
- ◆ HC&SA employees in the private sector only.
- ◆ Persons employed by health professionals in private practice.
- ◆ Both government and private sector workers in nonfarm employment data.

Does not include:

- ◆ Self-employed workers or volunteers, including health professionals in private practice.
 - ◆ HC&SA employees in the public sector. (These are counted as government workers in monthly reports. Approximately 54,500 of Virginia's public sector workers worked in the HC&SA sector in 2010 at the federal, state and local levels).
 - ◆ Information on hours worked or the quality of employment.
 - ◆ Government workers in HC&SA level data. (Government workers, regardless of occupation and role, are classified as public sector employees).
-