



Virginia Healthcare Workforce Briefs

Indicators from the Bureau of Labor Statistics'
Current Employment Statistics Survey
Series 1: State & National Employment

Series 1, Issue 33

October 2014

Highlights

- ◆ According to preliminary estimates, Virginia's Health Care & Social Assistance (HC&SA) sector created 200 jobs in September. So far in 2014, Virginia's HC&SA sector has created 4,000 jobs.
- ◆ August's preliminary employment estimate was revised downward by 400 jobs. Despite this revision, however, Virginia's HC&SA sector still created 600 new jobs during the month.
- ◆ Virginia's HC&SA sector managed to produce modest employment gains during a month in which the state's total nonfarm payroll fell by 7,400. This represents the worst one-month employment decline for Virginia's economy in more than four years.
- ◆ The national HC&SA sector also experienced modest employment growth in September with the addition of 22,700 new jobs to the national economy. September's result represents the weakest monthly job gain for the national HC&SA sector since January.
- ◆ The employment slowdown in the national HC&SA sector occurred despite a stronger overall employment picture as national total nonfarm payroll increased by healthy 248,000 in September.

Inside this Brief:

Virginia HC&SA Employment	2
National HC&SA Employment	2
Employment Growth	3
Long-Term Job Growth	3
About the Data	4

Data in the report is seasonally adjusted, and includes employees of private firms only. Self-employed persons, including health professionals in private practice, are not included.

Data in Brief

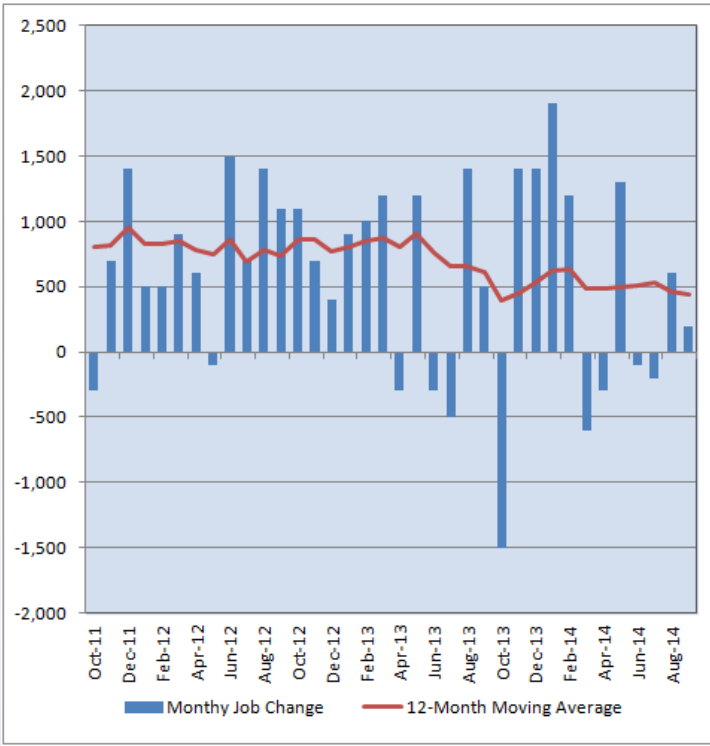
Seasonally Adjusted*	Employment, in Thousands				Growth Rate, Annualized		
	Sept. 2013	June 2014	Aug. 2014	Sept. 2014	12 Month	3 Month	1 Month
Nonfarm, Total							
Virginia	3,766.3	3,774.9	3,783.2	3,775.8	0.3%	0.1%	-2.3%
National	136,800.0	138,764.0	139,187.0	139,435.0	1.9%	1.9%	2.2%
Health & Social Assistance							
Virginia	410.2	414.9	415.3	415.5	1.3%	0.6%	0.6%
National	17,825.3	18,064.9	18,146.3	18,169.0	1.9%	2.3%	1.5%
All Other Nonfarm							
Virginia	3,356.1	3,360.0	3,367.9	3,360.3	0.1%	0.0%	-2.7%
National	118,974.1	120,699.1	121,040.7	121,266.0	1.9%	1.9%	2.3%

Preliminary estimates are italicized

*Seasonally adjusted data is adjusted by the Bureau of Labor Statistics to account for weather, holidays and other seasonal changes. Economists use seasonally adjusted data to reveal underlying trends over time. This series uses seasonally adjusted data exclusively. When comparing data in this series to other HWDC series, or publications from other sources, it is important to note whether the data reported has been seasonally adjusted.

Virginia HC&SA Employment

Figure 1: Monthly Change in Employment in Virginia’s Health Care & Social Assistance Sector, Seasonally Adjusted.



According to preliminary data released on Tuesday, October 21, 2014 by the U.S. Department of Labor, Bureau of Labor Statistics, Virginia’s HC&SA sector experienced a small employment gain in August with the addition of 200 jobs. Meanwhile, the preliminary estimate for HC&SA employment in August was revised downward by 400. Regardless, even after this revision, Virginia’s HC&SA sector still managed to add 600 new jobs during the month.

Despite the modest employment gain in September, growth in Virginia’s HC&SA sector has been declining throughout most of 2014. During the month, the 12-month moving average of the level change in HC&SA employment dropped to 442 monthly jobs, its lowest level since October 2013. In addition, this moving average has fallen by more than 30% since reaching a year-to-date high of 633 monthly jobs added in February.

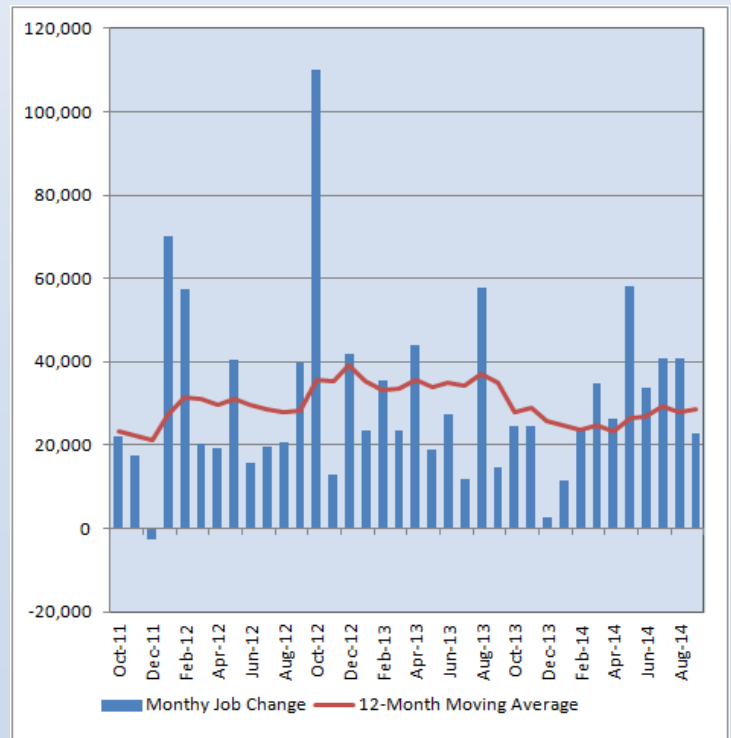
Thanks to this slowdown, Virginia’s HC&SA sector has only produced 4,000 jobs so far in 2014. At the same point in 2013, Virginia’s HC&SA sector had added 5,100 new jobs to Virginia’s economy.

National HC&SA Employment

Virginia’s HC&SA sector mirrored the national trend in September. According to preliminary estimates, the national HC&SA sector created 22,700 new jobs during the month, which represents its slowest one-month performance since January. However, whereas Virginia’s HC&SA sector overcame general weakness in the statewide economy — more than 7,400 jobs were lost throughout the state in September — the national economy performed very well during the month as employment increased by 248,000. Including September’s result, the national economy has now produced more than 200,000 jobs in seven of the past eight months.

Although September represents a relatively slow month for national HC&SA employment, the long-term picture looks more promising. The 12-month moving average of the level change in national HC&SA employment increased from 27,958 monthly jobs added in August to 28,642 monthly jobs added in September. In addition, this moving average has increased by 16% since the beginning of the year. This growth has led to the creation of 292,300 new HC&SA jobs so far in 2014, an increase of 14% relative to the 256,700 jobs added through the first nine months of 2013.

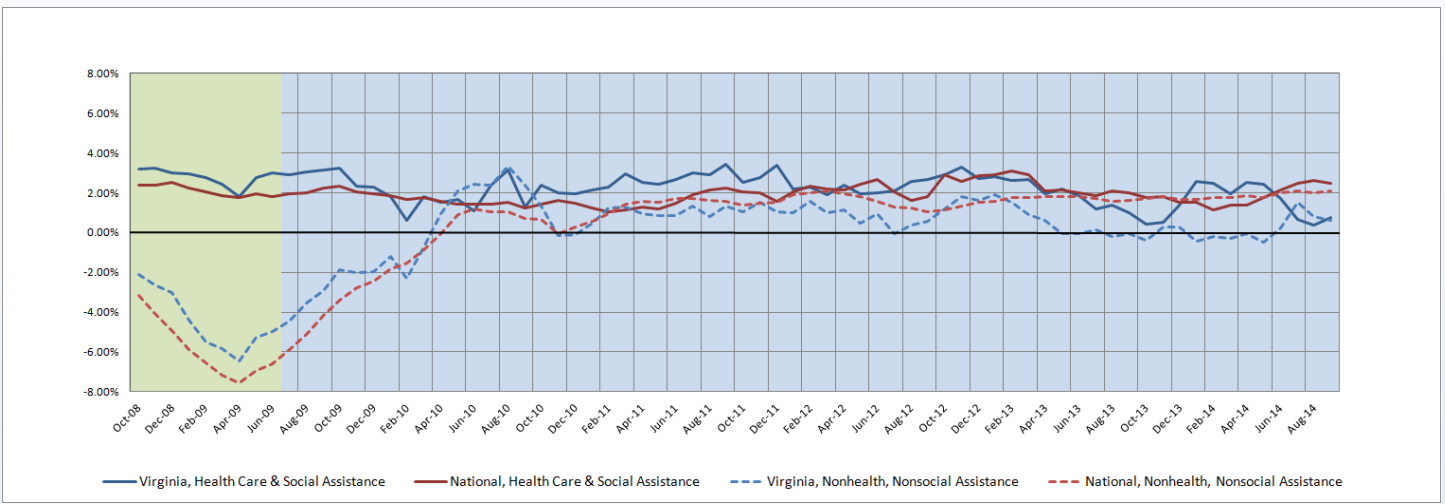
Figure 2: Monthly Change in Employment in National Health Care & Social Assistance Sector, Seasonally Adjusted.



Employment Growth

After reaching a decade-long low of 0.36% in August, the six-month moving average of Virginia’s HC&SA employment growth rate increased to 0.74% in September. Despite this gain, however, the six-month moving average of Virginia’s HC&SA employment growth rate has still experienced a dramatic decline over the past several months. Virginia’s six-month HC&SA employment growth rate moving average has fallen by more than 70% since January and has now been below the national average for four consecutive months. Meanwhile, even though the six-month moving average of Virginia’s total nonfarm payroll employment growth rate declined from 0.79% in August to 0.59% in September, Virginia’s total nonfarm payroll growth has still shown significant improvement relative to the stagnant growth of the first half of the year.

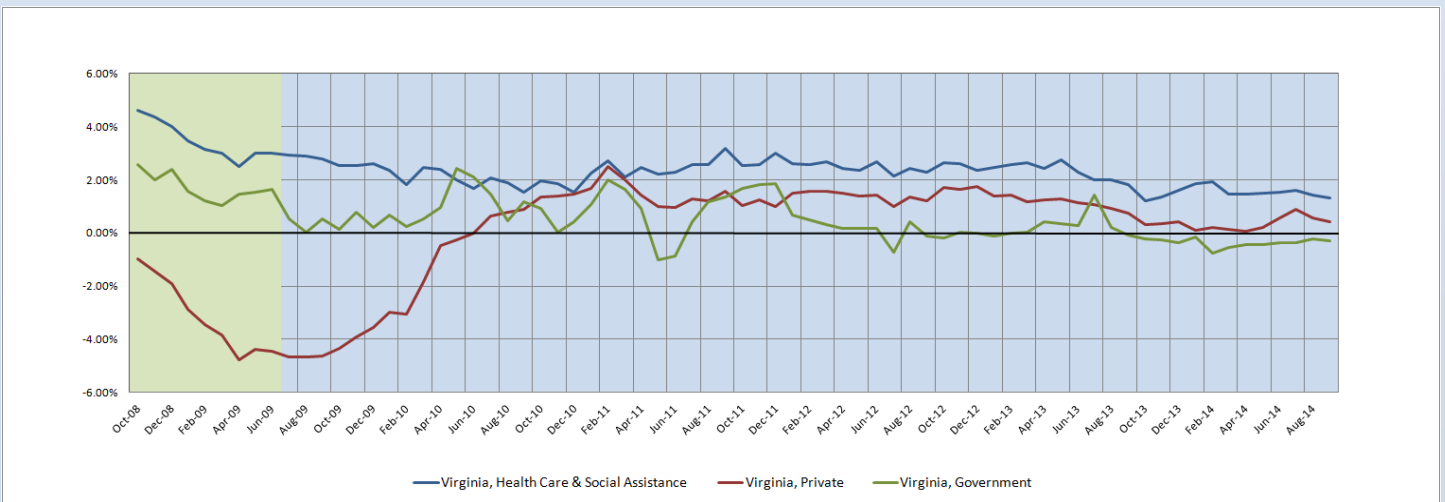
Figure 3: Six-Month Moving Average, Employment Growth, Seasonally Adjusted



Long-Term Employment Growth

In September, Virginia’s 12-month HC&SA employment growth rate moving average fell from 1.41% to 1.33%, its lowest value so far this year. However, long-term employment growth in Virginia’s HC&SA sector is still more robust than in other areas of Virginia’s economy. For instance, the 12-month moving average of the employment growth rate in Virginia’s private sector also fell during the month from 0.57% to 0.42%. In addition, Virginia’s government sector has continued to lag behind the rest of the state in terms of employment growth. During the month, the 12-month employment growth rate moving average of Virginia’s government sector declined from -0.23% to -0.28%. Virginia’s government sector has not seen its 12-month employment growth rate moving average rise above 0% since August 2013.

Figure 4: Twelve-Month Moving Average, Employment Growth, Seasonally Adjusted



Healthcare Workforce
Data Center

Perimeter Center
9960 Mayland Drive, Suite 300
Henrico, VA 23233-1463

Phone: (804) 367-2115
Fax: (804) 527-4434
E-mail: hwdc@dhp.virginia.gov

www.dhp.virginia.gov/hwdc/

Virginia Healthcare Workforce Briefs are produced by
Justin Crow, MPA
HWDC Research Analyst
&
Christopher Coyle
HWDC Research Assistant

Follow us on. . .

Tumblr: <http://vahwdc.tumblr.com/>

The Department of Health Professions Healthcare Workforce Data Center works to improve the data collection and measurement of Virginia's healthcare workforce through regular assessment of workforce supply and demand issues among the 80 professions and 350,000 practitioners licensed in Virginia by DHP.

The HWDC collects data on Virginia's licensed health professionals through surveys completed during the online license renewal and application process. Survey results and data may be accessed on our website: www.dhp.virginia.gov/hwdc/.

The HWDC also provides a series of Virginia Healthcare Workforce Briefs based on data collected by the US Department of Labor's Bureau of Labor Statistics and the US Department of Commerce' Bureau of Economic Analysis.

Virginia Healthcare Workforce Briefs:

Series 1: State & National Employment (Monthly)

Series 2: Virginia Regional Employment (Monthly)

Series 3: Income & Compensation (Quarterly)

About the Data

Data in this report is from the US Department of Labor, Bureau of Labor Statistics' Current Employment Statistics program. The CES program surveys about 140,000 businesses and government agencies monthly. Unless otherwise noted, this series uses seasonally-adjusted data that removes seasonal variations related to weather, holidays, weekends, seasons and other predictable variations. This allows us to better examine underlying trends in the labor market. Data from recent months is preliminary and subject to revision in future releases from the CES. Revisions will be reported in future editions of this series. Unless otherwise noted, the CES data presented in this series:

Includes:

- ◆ Data on employed individuals drawing a paycheck (payroll employees).
- ◆ All employees, regardless of role, occupation or hours worked.
- ◆ HC&SA employees in the private sector only.
- ◆ Persons employed by health professionals in private practice.
- ◆ Both government and private sector workers in nonfarm employment data.

Does not include:

- ◆ Self-employed workers or volunteers, including health professionals in private practice.
 - ◆ HC&SA employees in the public sector. (These are counted as government workers in monthly reports. Approximately 54,500 of Virginia's public sector workers worked in the HC&SA sector in 2010 at the federal, state and local levels).
 - ◆ Information on hours worked or the quality of employment.
 - ◆ Government workers in HC&SA level data. (Government workers, regardless of occupation and role, are classified as public sector employees).
-