



Virginia Healthcare Workforce Briefs

Indicators from the Bureau of Labor Statistics'
Current Employment Statistics Survey
Series 1: State & National Employment

Series 1, Issue 36

January 2015

Inside this Brief:

Virginia HC&SA Employment	2
National HC&SA Employment	2
Employment Growth	3
Long-Term Job Growth	3
About the Data	4

Data in the report is seasonally adjusted, and includes employees of private firms only. Self-employed persons, including health professionals in private practice, are not included.

Highlights

- ◆ According to preliminary estimates, Virginia's Health Care & Social Assistance (HC&SA) sector finished 2014 with a modest monthly employment gain of 200 new jobs. For the full year of 2014, Virginia's HC&SA sector created 6,000 jobs, a decline of 6% relative to the 6,400 HC&SA jobs created in 2013.
- ◆ November's preliminary estimate for HC&SA employment was revised upward by 100 jobs. After this revision, Virginia's HC&SA sector added 1,400 jobs in November, which represents its second-best monthly performance of 2014.
- ◆ For just the second time in 2014, total nonfarm payroll in Virginia increased in consecutive months. In December, Virginia's economy created 6,000 new jobs, while 28,900 jobs were added in all of the past year.
- ◆ The national HC&SA sector enjoyed yet another solid month of employment gains in December with the creation of 43,700 jobs. The national HC&SA sector created 426,000 jobs in 2014, an increase of 38% relative to 308,100 jobs created in the prior year.
- ◆ Coming off its strongest monthly gain in nearly three years in November, national total nonfarm payroll added an additional 252,000 jobs in December. In all of 2014, the national economy created 2,952,000 new jobs.

Data in Brief

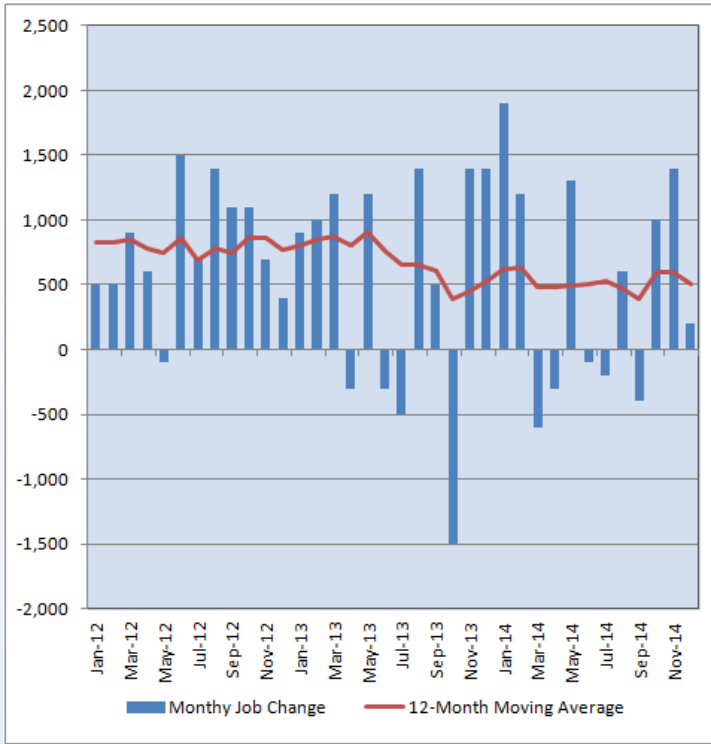
Seasonally Adjusted*	Employment, in Thousands				Growth Rate, Annualized		
	Dec. 2013	Sept. 2014	Nov. 2014	Dec. 2014	12 Month	3 Month	1 Month
Nonfarm, Total							
Virginia	3,768.4	3,776.5	3,791.3	3,797.3	0.8%	2.2%	1.9%
National	137,395.0	139,481.0	140,095.0	140,347.0	2.1%	2.5%	2.2%
Health & Social Assistance							
Virginia	411.5	414.9	417.3	417.5	1.5%	2.5%	0.6%
National	17,876.7	18,170.3	18,259.0	18,302.7	2.4%	2.9%	2.9%
All Other Nonfarm							
Virginia	3,356.9	3,361.6	3,374.0	3,379.8	0.7%	2.2%	2.1%
National	119,518.3	121,310.7	121,836.0	122,044.3	2.1%	2.4%	2.1%

Preliminary estimates are italicized

*Seasonally adjusted data is adjusted by the Bureau of Labor Statistics to account for weather, holidays and other seasonal changes. Economists use seasonally adjusted data to reveal underlying trends over time. This series uses seasonally adjusted data exclusively. When comparing data in this series to other HWDC series, or publications from other sources, it is important to note whether the data reported has been seasonally adjusted.

Virginia HC&SA Employment

Figure 1: Monthly Change in Employment in Virginia’s Health Care & Social Assistance Sector, Seasonally Adjusted.



According to preliminary data released on Tuesday, January 27, 2015 by the U.S. Department of Labor, Bureau of Labor Statistics, Virginia’s HC&SA sector enjoyed its third consecutive month of employment gains with the creation of 200 jobs in December. Meanwhile, the preliminary employment estimate for November was revised upward by 100 additional jobs. After this revision, Virginia’s HC&SA sector added 1,400 jobs to the state’s economy in November; only in January did the state’s HC&SA sector add more jobs in a single month during 2014.

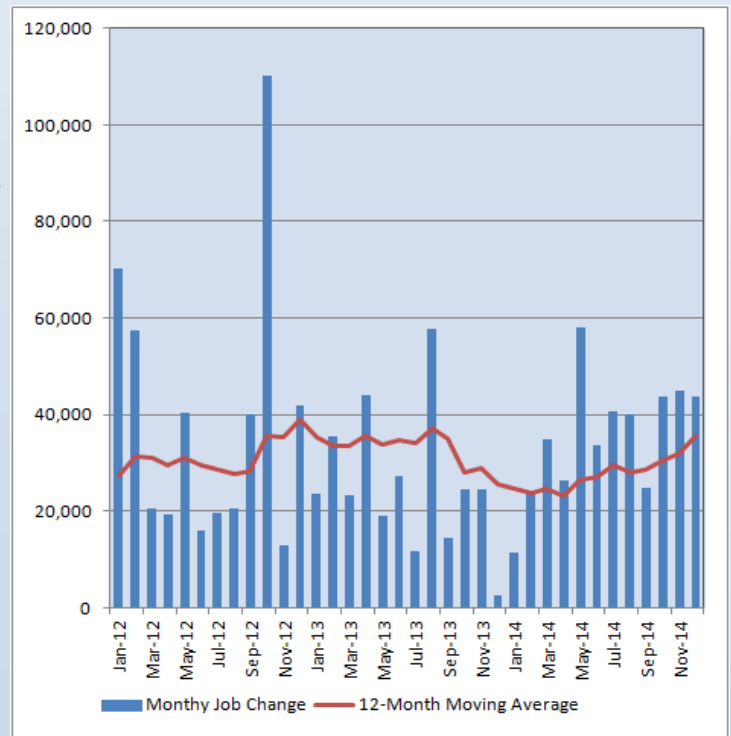
Despite these gains, however, December’s relatively modest increase contributed to a decline in the 12-month moving average of the level change in Virginia’s HC&SA employment from 600 monthly jobs added in November to 500 monthly jobs added in December. Overall, Virginia’s HC&SA sector managed to add 6,000 jobs to the state’s economy in 2014, making it responsible for 21% of all job growth in Virginia during the year. However, this total does represent the fewest number of HC&SA jobs created in a single year since 2010, when 5,500 jobs were added.

National HC&SA Employment

The national HC&SA sector created 43,700 jobs in December. This represents the third consecutive month in which the national HC&SA sector has added more than 40,000 jobs, which has not happened since 2007. Thanks to this strong employment growth in the fourth quarter of 2014, the 12-month moving average of the level change in national HC&SA employment increased to 35,500 monthly jobs added in December, which represents its highest value since August 2013. In total, the national HC&SA sector created 426,000 jobs in 2014.

This growth has come at a time when the nation’s total non-farm payroll has experienced a significant employment surge. One month after the nation’s total nonfarm payroll increased by 353,000, its best monthly performance since January 2012, the national economy created an additional 252,000 jobs in December. The national economy has now created a minimum of 200,000 jobs in every month of 2014 except January. Overall, the national economy created 2,952,000 jobs in 2014. This represents the strongest yearly increase in national employment since 1999.

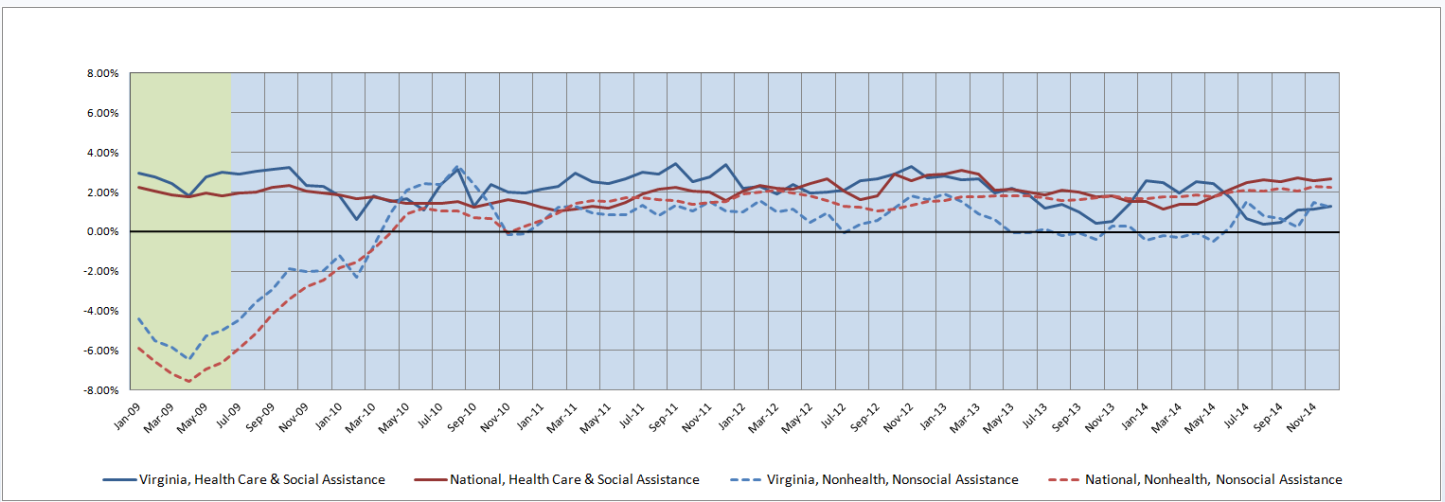
Figure 2: Monthly Change in Employment in National Health Care & Social Assistance Sector, Seasonally Adjusted.



Employment Growth

Virginia’s total nonfarm payroll enjoyed its second consecutive month of employment gains in December with the creation of 6,000 new jobs. For all of 2014, the state’s economy added 28,900 jobs, which represents a significant improvement relative to the 9,800 jobs created in 2013. Both HC&SA and non-HC&SA sectors have been positive contributors to this growth. In fact, the six-month moving averages of the employment growth rate in Virginia’s HC&SA and non-HC&SA sectors are nearly identical at 1.27% and 1.24%, respectively. However, both of these moving averages are below the national average. Currently, the six-month national HC&SA employment growth rate moving average is at 2.65%, while its six-month non-HC&SA employment growth rate moving average is at 2.24%.

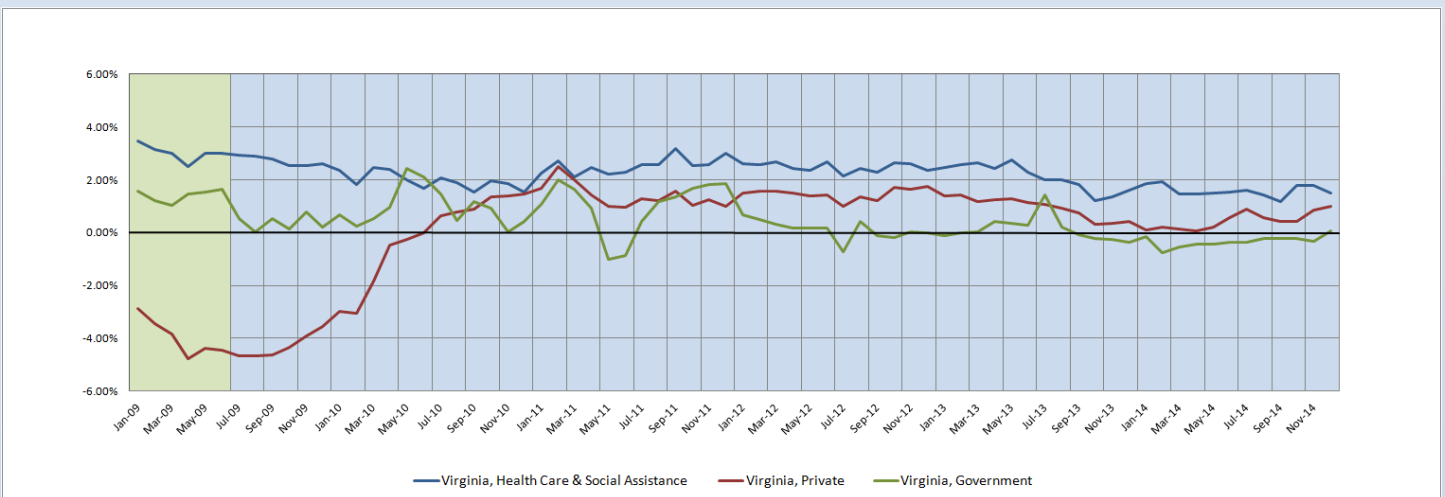
Figure 3: Six-Month Moving Average, Employment Growth, Seasonally Adjusted



Long-Term Employment Growth

Although long-term employment growth in Virginia’s HC&SA sector continues to exceed the growth rates in both Virginia’s private and governmental sectors, that gap narrowed in December. Whereas the 12-month HC&SA employment growth rate moving average in Virginia fell from 1.79% to 1.49% in December, the corresponding moving average for Virginia’s private sector increased to a one-and-a-half year high of 0.99%. Meanwhile, Virginia’s governmental sector enjoyed a moment of good news in December as its 12-month employment growth rate moving average moved into positive territory for the first time since August 2013. For the month, its 12-month employment growth rate moving average increased from -0.34% in 0.08%.

Figure 4: Twelve-Month Moving Average, Employment Growth, Seasonally Adjusted



Healthcare Workforce
Data Center

Perimeter Center
9960 Mayland Drive, Suite 300
Henrico, VA 23233-1463

Phone: (804) 367-2115
Fax: (804) 527-4434
E-mail: hwdc@dhp.virginia.gov

www.dhp.virginia.gov/hwdc/

Virginia Healthcare Workforce Briefs are produced by
Justin Crow, MPA
HWDC Research Analyst
&
Christopher Coyle
HWDC Research Assistant

Follow us on. . .

Tumblr: <http://vahwdc.tumblr.com/>

The Department of Health Professions Healthcare Workforce Data Center works to improve the data collection and measurement of Virginia's healthcare workforce through regular assessment of workforce supply and demand issues among the 80 professions and 350,000 practitioners licensed in Virginia by DHP.

The HWDC collects data on Virginia's licensed health professionals through surveys completed during the online license renewal and application process. Survey results and data may be accessed on our website: www.dhp.virginia.gov/hwdc/.

The HWDC also provides a series of Virginia Healthcare Workforce Briefs based on data collected by the US Department of Labor's Bureau of Labor Statistics and the US Department of Commerce' Bureau of Economic Analysis.

Virginia Healthcare Workforce Briefs:

Series 1: State & National Employment (Monthly)

Series 2: Virginia Regional Employment (Monthly)

Series 3: Income & Compensation (Quarterly)

About the Data

Data in this report is from the US Department of Labor, Bureau of Labor Statistics' Current Employment Statistics program. The CES program surveys about 140,000 businesses and government agencies monthly. Unless otherwise noted, this series uses seasonally-adjusted data that removes seasonal variations related to weather, holidays, weekends, seasons and other predictable variations. This allows us to better examine underlying trends in the labor market. Data from recent months is preliminary and subject to revision in future releases from the CES. Revisions will be reported in future editions of this series. Unless otherwise noted, the CES data presented in this series:

Includes:

- ◆ Data on employed individuals drawing a paycheck (payroll employees).
- ◆ All employees, regardless of role, occupation or hours worked.
- ◆ HC&SA employees in the private sector only.
- ◆ Persons employed by health professionals in private practice.
- ◆ Both government and private sector workers in nonfarm employment data.

Does not include:

- ◆ Self-employed workers or volunteers, including health professionals in private practice.
 - ◆ HC&SA employees in the public sector. (These are counted as government workers in monthly reports. Approximately 54,500 of Virginia's public sector workers worked in the HC&SA sector in 2010 at the federal, state and local levels).
 - ◆ Information on hours worked or the quality of employment.
 - ◆ Government workers in HC&SA level data. (Government workers, regardless of occupation and role, are classified as public sector employees).
-