



Virginia Healthcare Workforce Briefs

Indicators from the Bureau of Labor Statistics'
Current Employment Statistics Survey
Series 1: State & National Employment

Series 1, Issue 42

July 2015

Highlights

- ◆ According to preliminary estimates, Virginia's Health Care & Social Assistance (HC&SA) sector lost 1,500 jobs in June, which represents a one-month annualized employment growth rate of -4.2%. June was the worst month for employment in Virginia's HC&SA sector in more than two years.
- ◆ In May, preliminary estimates indicated that Virginia's HC&SA sector had created 300 jobs during the month. However, after an upward revision of 300 additional jobs, the sector actually created 600 jobs in May.
- ◆ Although Virginia's HC&SA sector had a down month in May, Virginia's overall economy did well during the month as total nonfarm payroll increased by 13,400, its third consecutive month of positive employment gains.
- ◆ The national HC&SA sector enjoyed its third consecutive month of employment gains in excess of 50,000 in May after creating 52,800 jobs during the month. This gain increased the 12-month moving average of the level change of national HC&SA employment to 44,883.
- ◆ The overall national economy experienced a solid employment gain in May with the creation of 223,000 jobs during the month. During the first half of 2015, the nation's total nonfarm payroll has increased by 1.25 million.

Inside this Brief:

Virginia HC&SA Employment	2
Virginia Employment	2
National Employment	3
Employment Growth	3
About the Data	4

Data in the report is seasonally adjusted, and includes employees of private firms only. Self-employed persons, including health professionals in private practice, are not included.

Data in Brief

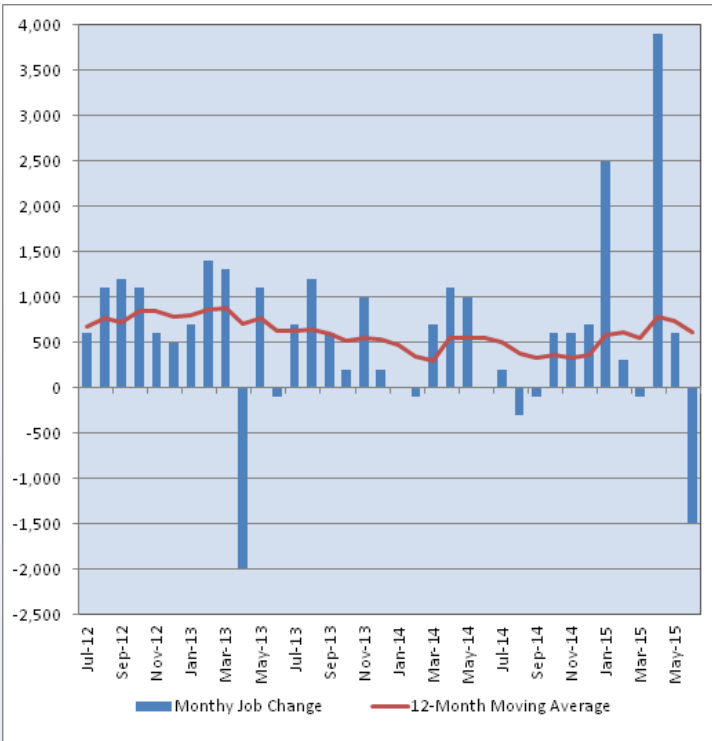
Seasonally Adjusted*	Employment, in Thousands				Growth Rate, Annualized		
	June 2014	Mar. 2015	May 2015	June 2015	12 Month	3 Month	1 Month
Nonfarm, Total							
Virginia	3,774.9	3,785.6	3,811.1	3,824.5	1.3%	4.2%	4.3%
National	138,907.0	141,178.0	141,619.0	141,842.0	2.1%	1.9%	1.9%
Health & Social Assistance							
Virginia	408.6	413.0	417.5	416.0	1.8%	2.9%	-4.2%
National	18,032.8	18,402.5	18,518.6	18,571.4	3.0%	3.7%	3.5%
All Other Nonfarm							
Virginia	3,366.3	3,372.6	3,393.6	3,408.5	1.3%	4.3%	5.4%
National	120,874.2	122,775.5	123,100.4	123,270.6	2.0%	1.6%	1.7%

Preliminary estimates are italicized

*Seasonally adjusted data is adjusted by the Bureau of Labor Statistics to account for weather, holidays and other seasonal changes. Economists use seasonally adjusted data to reveal underlying trends over time. This series uses seasonally adjusted data exclusively. When comparing data in this series to other HWDC series, or publications from other sources, it is important to note whether the data reported has been seasonally adjusted.

Virginia HC&SA Employment

Figure 1: Monthly Change in Employment in Virginia's Health Care & Social Assistance Sector, Seasonally Adjusted.



According to preliminary data released on Tuesday, July 21, 2015 by the U.S. Department of Labor, Bureau of Labor Statistics, Virginia's Health Care & Social Assistance (HC&SA) sector experienced its worst monthly employment decline in more than two years after losing 1,500 jobs in June. This decline represents a one-month annualized employment growth rate of -4.2%. Meanwhile, May's preliminary employment estimate was revised upward by 300 jobs. After this revision, Virginia's HC&SA sector created 600 jobs in May.

With June's employment decline, the 12-month moving average of the level change in Virginia's HC&SA employment fell for the second consecutive month. With this decline, Virginia's HC&SA sector has now created an average of 617 jobs per month over the past year. Even with this decline, however, the sector has still done rather well in recent months. During the first half of 2015, Virginia's HC&SA sector has created 5,700 new jobs for the state's economy. By way of comparison, this sector only managed to create 2,700 during the first six months of 2014.

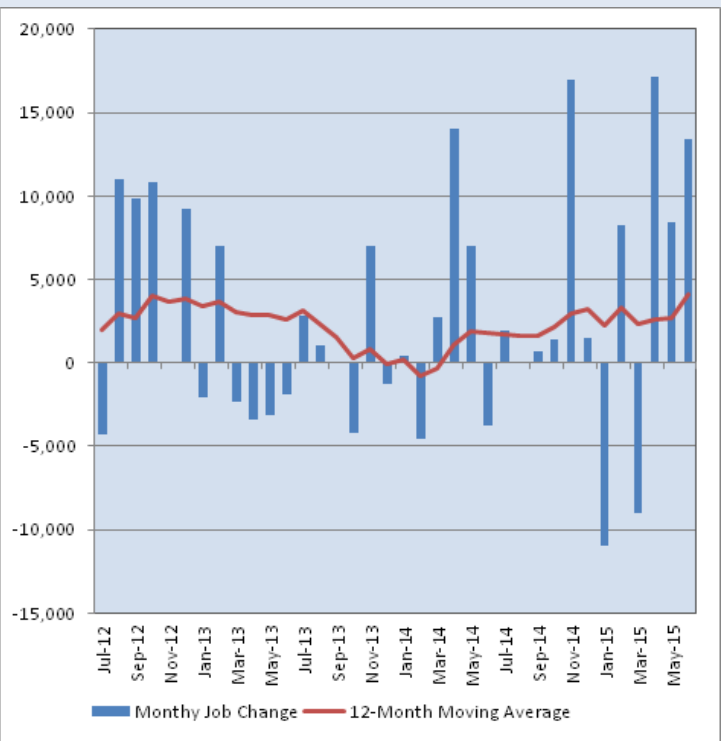
Virginia Employment

According to preliminary estimates, Virginia's total nonfarm payroll increased by 13,400 in June. Meanwhile, May's preliminary employment estimate was revised upward by 2,500 jobs. After this revision, Virginia's overall economy managed to create 8,400 jobs in May.

May's results represents the third consecutive month in which Virginia's overall economy has experienced positive employment growth. During the second quarter, Virginia's total nonfarm payroll increased by 38,900 jobs, which represents a three-month annualized employment growth rate of 4.2%. This number is more than three times the state's 12-month employment growth rate of 1.3%.

Thanks to this recent growth, the 12-month moving average of the level change in Virginia's total nonfarm payroll spiked in June from 2,700 to 4,133, its highest level since December 2011. In addition, during the first half of 2015, Virginia's overall economy has produced an even higher average of 4,500 jobs per month. In fact, Virginia has not created this many new jobs during the first two quarters of a new year since 2010, when overall employment increase by 29,400.

Figure 2: Monthly Change in Employment in Virginia's Total Non-farm Payroll, Seasonally Adjusted.



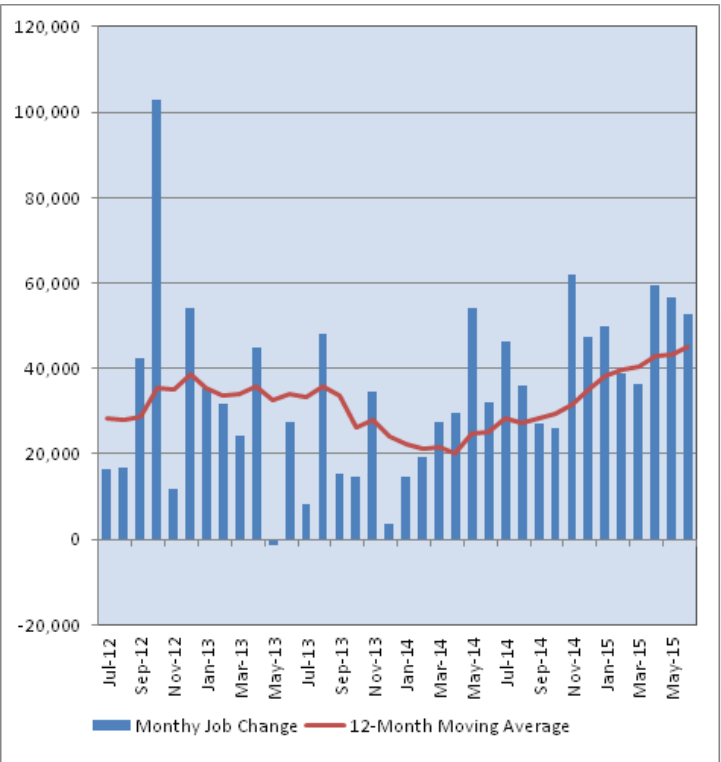
National Employment

Preliminary estimates indicate that the national HC&SA sector created 52,800 jobs in June. This represents the third consecutive month in which the national HC&SA sector has produced more than 50,000 jobs, something that has not happened in more than a decade. In addition, the 12-month moving average of the level change in national HC&SA employment grew for the tenth consecutive month in June: Over the past year, the national HC&SA sector has now created an average 44,883 jobs per month.

National HC&SA employment growth has been very strong during the first half of 2015. Year-to-date, the nation's HC&SA sector has created 293,700 jobs. Over the first two quarters of 2014, national HC&SA employment only grew by 177,100.

Meanwhile, the nation's total nonfarm payroll grew by 223,000 in May. National employment growth has rebounded over the past two months after posting relatively weak gains in March and April. Regardless, year-to-date national employment growth has slowed somewhat this year: So far in 2015, the national economy has created 1.25 million jobs.

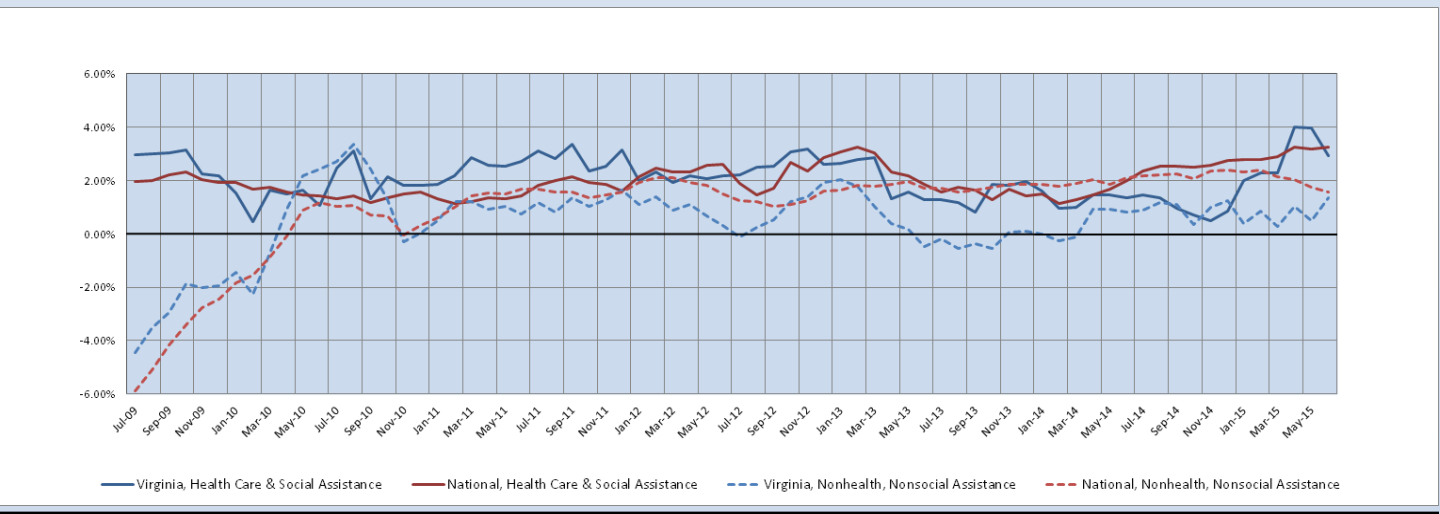
Figure 3: Monthly Change in Employment in National Health Care & Social Assistance Sector, Seasonally Adjusted



Employment Growth

With June's employment decline, the six-month moving average of Virginia's HC&SA employment growth rate fell from 3.98% to 2.93%. Despite this month's decline, this moving average has still grown considerably over the past year. In June 2014, for instance, the six-month moving average of Virginia's HC&SA employment growth rate was just 1.35%. Regardless, this decline was large enough such that it has now fallen below the six-month moving average of employment growth in the national HC&SA sector, which increased to 3.24% in May. However, the largest gain this month came from Virginia's total nonfarm payroll, whose six-month employment growth rate moving average increased from 0.49% to 1.34% in May. This represents the highest value for Virginia's total nonfarm payroll since February 2013.

Figure 4: Six-Month Moving Average, Employment Growth, Seasonally Adjusted



Healthcare Workforce
Data Center

Perimeter Center
9960 Mayland Drive, Suite 300
Henrico, VA 23233-1463

Phone: (804) 367-2115
Fax: (804) 527-4434
E-mail: hwdc@dhp.virginia.gov

www.dhp.virginia.gov/hwdc/

HWDC Staff:

Dr. Elizabeth Carter, Ph.D. <i>Executive Director</i>	Laura Jackson <i>Operations Manager</i>	Christopher Coyle <i>Research Assistant</i>
---	--	--

Follow us on. . .

Tumblr: <http://vahwdc.tumblr.com/>

The Department of Health Professions Healthcare Workforce Data Center works to improve the data collection and measurement of Virginia's healthcare workforce through regular assessment of workforce supply and demand issues among the 80 professions and 350,000 practitioners licensed in Virginia by DHP.

The HWDC collects data on Virginia's licensed health professionals through surveys completed during the online license renewal and application process. Survey results and data may be accessed on our website: www.dhp.virginia.gov/hwdc/.

The HWDC also provides a series of Virginia Healthcare Workforce Briefs based on data collected by the US Department of Labor's Bureau of Labor Statistics and the US Department of Commerce' Bureau of Economic Analysis.

Virginia Healthcare Workforce Briefs:

Series 1: State & National Employment (Monthly)

Series 2: Virginia Regional Employment (Monthly)

Series 3: Income & Compensation (Quarterly)

About the Data

Data in this report is from the US Department of Labor, Bureau of Labor Statistics' Current Employment Statistics program. The CES program surveys about 143,000 businesses and government agencies monthly. Unless otherwise noted, this series uses seasonally-adjusted data that removes seasonal variations related to weather, holidays, weekends, seasons and other predictable variations. This allows us to better examine underlying trends in the labor market. Data from recent months is preliminary and subject to revision in future releases from the CES. Revisions will be reported in future editions of this series. Unless otherwise noted, the CES data presented in this series:

Includes:

- ◆ Data on employed individuals drawing a paycheck (payroll employees).
- ◆ All employees, regardless of role, occupation or hours worked.
- ◆ HC&SA employees in the private sector only.
- ◆ Persons employed by health professionals in private practice.
- ◆ Both government and private sector workers in nonfarm employment data.

Does not include:

- ◆ Self-employed workers or volunteers, including health professionals in private practice.
 - ◆ HC&SA employees in the public sector. (These are counted as government workers in monthly reports. Approximately 54,500 of Virginia's public sector workers worked in the HC&SA sector in 2010 at the federal, state and local levels).
 - ◆ Information on hours worked or the quality of employment.
 - ◆ Government workers in HC&SA level data. (Government workers, regardless of occupation and role, are classified as public sector employees).
-