



# Virginia Healthcare Workforce Briefs

Indicators from the Bureau of Labor Statistics'  
Current Employment Statistics Survey  
**Series 2: Regional & Sectoral Employment**

Series 2, Issue 46

November 2015

## Inside this Brief:

Regional Employment Growth	2
Regional HC&SA Share	3
Subsector Employment Growth	3
Subsector HC&SA Share	4
Region Map	5
About the Data	6

## Highlights

- ◆ Data in this series is not seasonally adjusted and exhibits short-term volatility from fluctuations in holidays, weekends, weather and other seasonal factors. Estimates for the most recent month are preliminary.
- ◆ Virginia's Health Care & Social Assistance (HC&SA) sector had a solid month in October after creating 900 new jobs, which represents a one-month annualized employment growth rate of 2.6%. Over the past year, employment in Virginia's HC&SA sector has grown by 1.5%.
- ◆ With the creation of 1,200 new jobs in October, Richmond was by far the most important contributor to HC&SA employment growth during the month. Hampton Roads also made a small positive contribution of 200 HC&SA jobs in October, although the Rest of the State saw HC&SA employment decline by 500.
- ◆ The Social Assistance subsector had another spectacular month in October with the creation of 1,500 new jobs, thereby adding to its gain of 1,800 jobs back in August. Virginia's Hospitals were the only other HC&SA subsector to increase employment during the month with the addition of 300 jobs.

*Data in this report is not seasonally adjusted. HC&SA data includes employees of private firms only. Self-employed persons, including health professionals in private practice, are not included.*

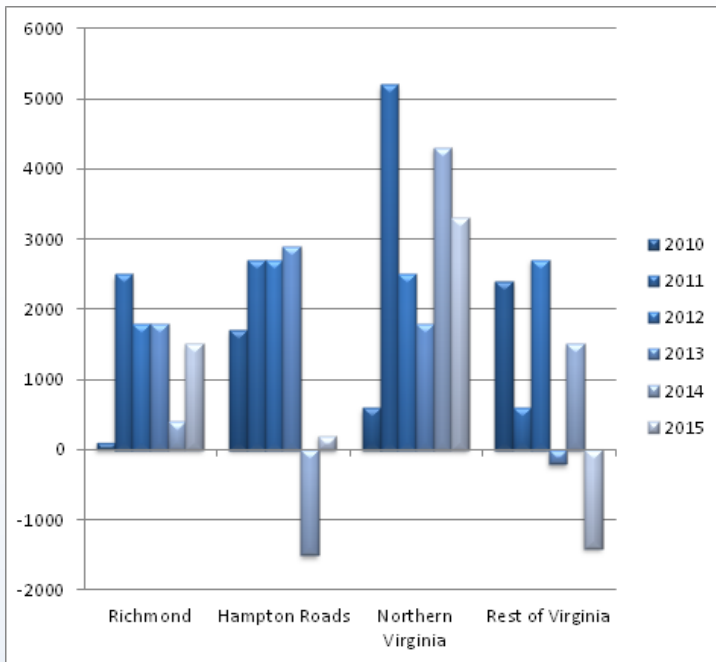
## Data in Brief

Not Seasonally Adjusted*	Employment, in Thousands				Growth Rate, Annualized		
	Oct. 2014	July 2015	Sept. 2015	Oct. 2015	12 Month	3 Month	1 Month
<b>Virginia</b>							
Total Nonfarm	3,797.5	3,827.5	3,819.9	3,845.4	1.3%	1.9%	8.3%
Health Care & Social Assistance	410.0	415.6	415.3	416.2	1.5%	0.6%	2.6%
<b>Virginia Beach, Norfolk, Newport News</b>							
Total Nonfarm	753.2	770.1	762.9	762.5	1.2%	-3.9%	-0.6%
Health Care & Social Assistance	86.6	85.9	86.5	86.7	0.1%	3.8%	2.8%
<b>Northern Virginia</b>							
Total Nonfarm	1,383.4	1,415.9	1,409.4	1,415.3	2.3%	-0.2%	5.1%
Health Care & Social Assistance	118.5	123.6	123.4	123.4	4.1%	-0.6%	0.0%
<b>Richmond</b>							
Total Nonfarm	635.4	633.6	631.6	641.6	1.0%	5.1%	20.7%
Health Care & Social Assistance	81.1	80.7	80.6	81.8	0.9%	5.6%	19.4%
<b>Rest of Virginia</b>							
Total Nonfarm	1,025.5	1,007.9	1,016.0	1,026.0	0.0%	7.4%	12.5%
Health Care & Social Assistance	123.8	125.4	124.8	124.3	0.4%	-3.5%	-4.7%

Preliminary estimates are italicized

\*Seasonally adjusted data is adjusted by the Bureau of Labor Statistics to account for weather and other seasonal changes. Since the US Bureau of Labor Statistics does not provide seasonally adjusted data at this level, this series uses non-seasonally adjusted data exclusively. Seasonal variation may account for some of the variation in time series data. When comparing data in this series to other HWDC series or other publications it is important to note whether the data reported has been seasonally adjusted.

### Regional HC&SA Employment Growth, Level



**Figure 1: Annual Change in HC&SA Employment (Not Seasonally Adjusted, Change from Dec to Dec).**

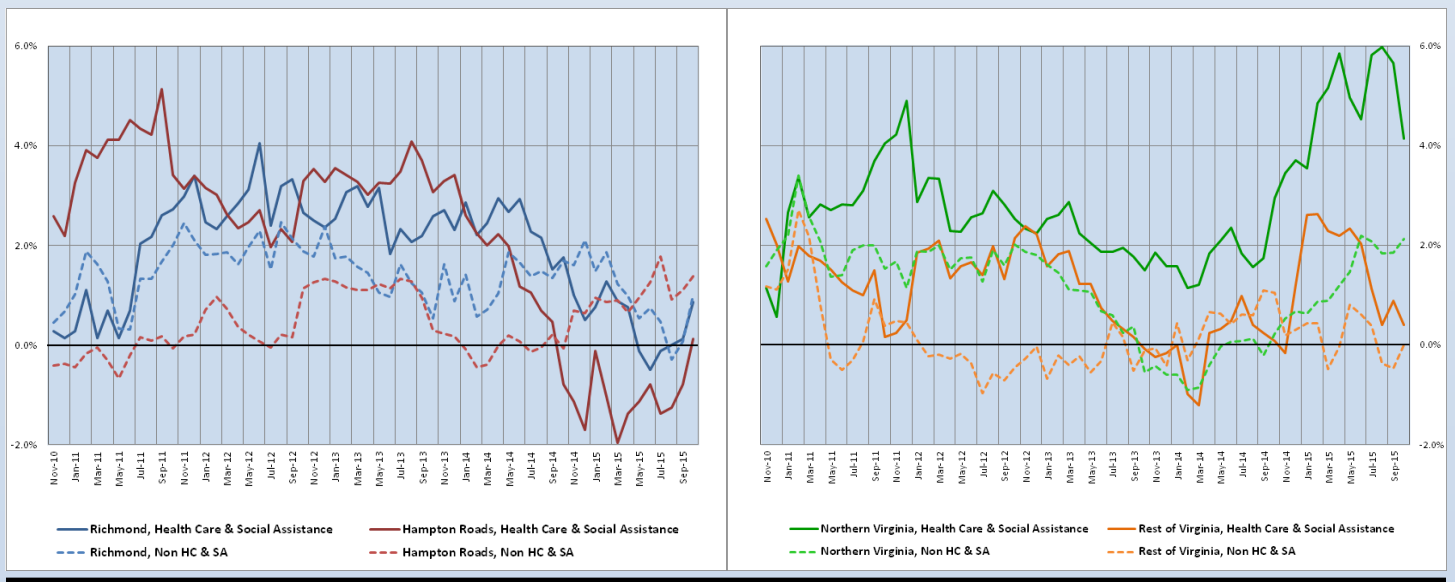
According to preliminary data released on Friday, November 20, 2015 by the U.S. Department of Labor, Bureau of Labor Statistics, Virginia’s Health Care & Social Assistance (HC&SA) sector recovered all of its losses from September by adding 900 jobs in October. Nearly all of these gains came from Richmond, which managed to create 1,200 HC&SA jobs during the month. At the same time, Hampton Roads also managed to make a positive contribution to the state’s HC&SA employment growth with an employment gain of 200 in October. Meanwhile, Northern Virginia saw no change in its HC&SA sector in October, but the Rest of Virginia lost 500 HC&SA jobs during the month.

Through October, three of Virginia’s four regions have made a positive contribution to the state’s year-to-date HC&SA employment growth. Northern Virginia is still the main driver of this growth with 3,300 HC&SA jobs created so far this year, while Richmond’s HC&SA sector has increased employment by 1,500. Hampton Roads has also added to this growth with a modest gain of 200 HC&SA jobs so far in 2015.

### Year-Over-Year Regional Employment Growth

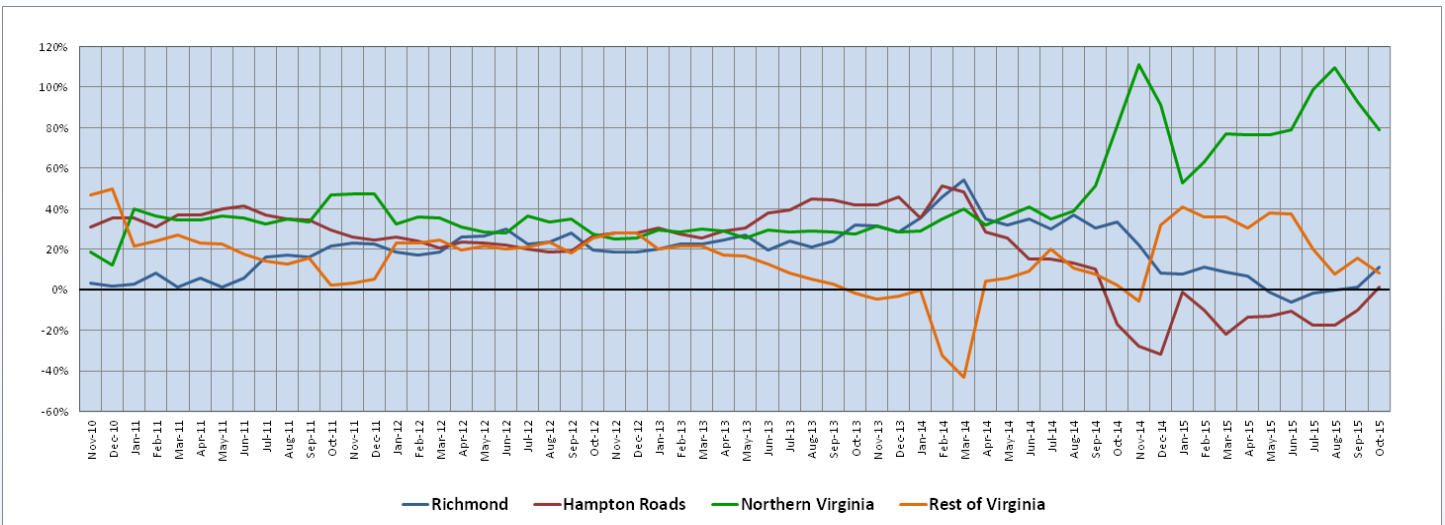
For the first time since last September, Hampton Roads’ year-over-year HC&SA employment growth rate was positive after jumping from -0.80% to 0.12% in October. Richmond’s HC&SA sector also enjoyed a large increase in its year-over-year employment growth rate from 0.12% to 0.86%, reaching its highest value since March. Meanwhile, Northern Virginia saw its year-over-year HC&SA employment growth rate fall again in October from 5.65% to just 4.14%. Although Northern Virginia’s HC&SA sector still sports the fastest year-over-year growth rate in the state, it has now fallen to its lowest value since January. Finally, the Rest of Virginia saw its HC&SA employment growth rate fall to 0.40% during the month.

**Figure 2: Year-Over-Year Employment Growth (Not Seasonally Adjusted).**



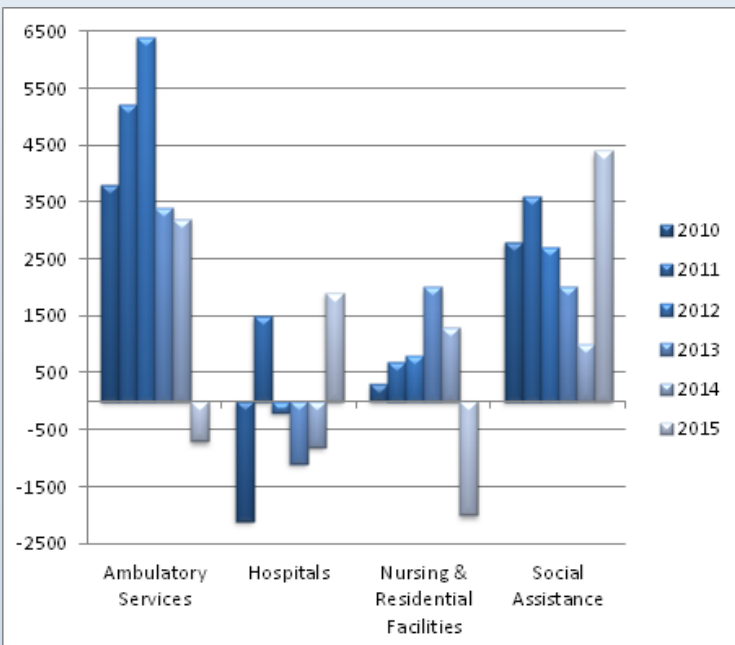
### Regional Share of 12-month Growth

**Figure 3: Regional Share of Previous 12-Month Employment Growth in Virginia’s HC&SA Sector, Not Seasonally Adjusted.**



For the past year and a half, Northern Virginia has been the main driver of HC&SA employment growth in the state, but its 12-month HC&SA employment growth share has been falling over the past two months. In October, its 12-month growth share fell from 92.96% to 79.03%, reaching a level not seen since May. Most of this growth share has been taken by Richmond and Hampton Roads, which saw their respective 12-month employment growth shares increase to 11.29% and 1.61% during the month, both of which represent year-to-date highs. Meanwhile, the Rest of Virginia saw its 12-month HC&SA employment growth share fall from 15.49% to just 8.06% during the month. Since the beginning of the year, the Rest of Virginia is the only region in the state whose 12-month HC&SA employment growth share has declined.

### Subsector Employment Growth



**Figure 4: Annual & YTD Change in HC&SA Subsector Employment (Not Seasonally Adjusted, Dec. to Dec.)**

For the second time in the past three months, Virginia’s Social Assistance subsector enjoyed very strong employment growth. After adding 1,800 jobs in August, the Social Assistance subsector followed this up in October with the creation of 1,500 new jobs, which represents a one-month annualized employment growth rate of 27.0%. Its three-month annualized employment growth rate, which includes the large gains from August and October, is nearly as impressive at 19.4%.

Meanwhile, Virginia’s Hospitals also made a positive contribution to the state’s HC&SA sector in October with the creation of 300 new jobs. However, these gains were wiped out by the loss of 700 jobs in the Nursing & Residential Care Facilities subsector and the loss of 200 jobs in Ambulatory Health Care Services.

So far this year, Social Assistance has been the main contributor to HC&SA employment gains, adding 4,400 jobs this year. Virginia’s Hospitals have also had a good year with the creation of 1,900 jobs so far in 2015.

Distribution of Growth by Subsector

Not Seasonally Adjusted	Employment, in Thousands				Growth Rate, Annualized		
	Oct. 2014	July 2015	Sept. 2015	Oct. 2015	12 Month	3 Month	1 Month
<b>Virginia</b>							
Health Care & Social Assistance	410.0	415.6	415.3	<i>416.2</i>	1.5%	0.6%	2.6%
<i>Ambulatory Health Care Services</i>	163.5	166.6	164.4	<i>164.2</i>	0.4%	-5.6%	-1.5%
<i>Hospitals</i>	101.4	103.0	103.7	<i>104.0</i>	2.6%	3.9%	3.5%
<i>Nursing &amp; Residential Care Facilities</i>	73.0	73.2	72.6	<i>71.9</i>	-1.5%	-6.9%	-11.0%
<i>Social Assistance</i>	72.1	72.8	74.6	<i>76.1</i>	5.5%	19.4%	27.0%
<b>Virginia Beach, Norfolk, Newport News</b>							
Health Care & Social Assistance	86.6	85.9	86.5	<i>86.7</i>	0.1%	3.8%	2.8%
<i>Hospitals</i>	21.4	21.4	21.7	<i>21.8</i>	1.9%	7.7%	5.7%
<b>Northern Virginia</b>							
Health Care & Social Assistance	118.5	123.6	123.4	<i>123.4</i>	4.1%	-0.6%	0.0%
<i>Ambulatory Health Care Services</i>	54.7	57.1	56.7	<i>56.7</i>	3.7%	-2.8%	0.0%
<i>Hospitals</i>	23.5	24.1	24.4	<i>24.6</i>	4.7%	8.6%	10.3%

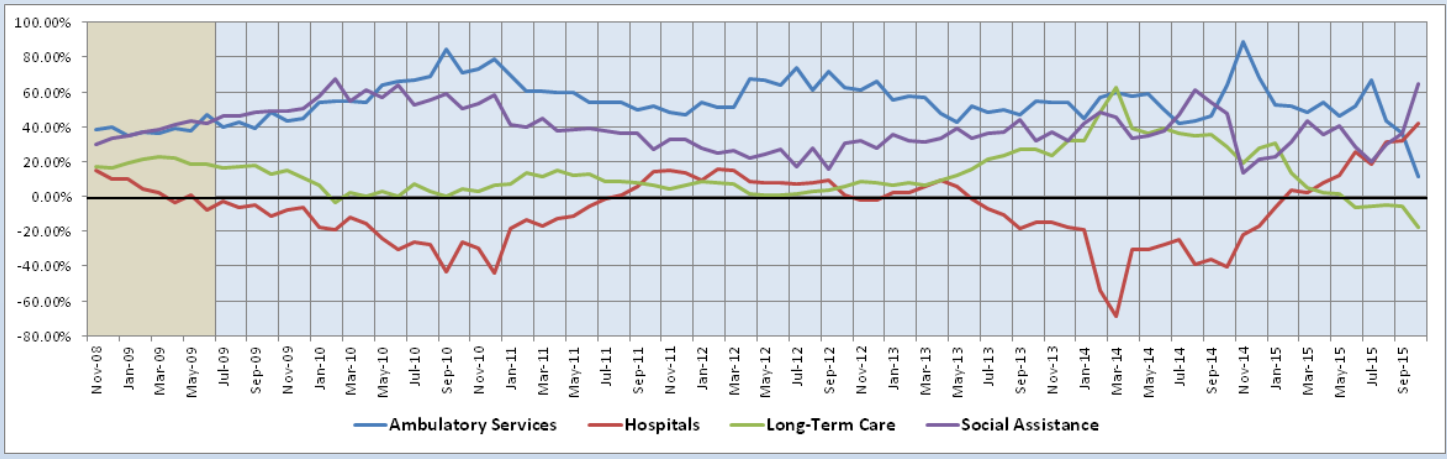
Preliminary estimates are italicized

HC&SA employment growth continues to be driven by gains in the Social Assistance and Hospitals subsectors. Over the past 12 months, Social Assistance has seen employment grow by 5.5%, while Virginia's Hospitals have experienced an employment gain of 2.6%. Both of these growth rates are above the statewide average for the HC&SA sector of 1.5%. In addition, both of these HC&SA subsectors are enjoying even faster short-term employment growth rates, which suggests continued improvement in the future. Alternatively, the state's Ambulatory Health Care Services and Nursing & Residential Care Facilities both have little to no 12-month employment growth, and their short-term growth is even less impressive.

Share of 12-Month Growth by Subsector

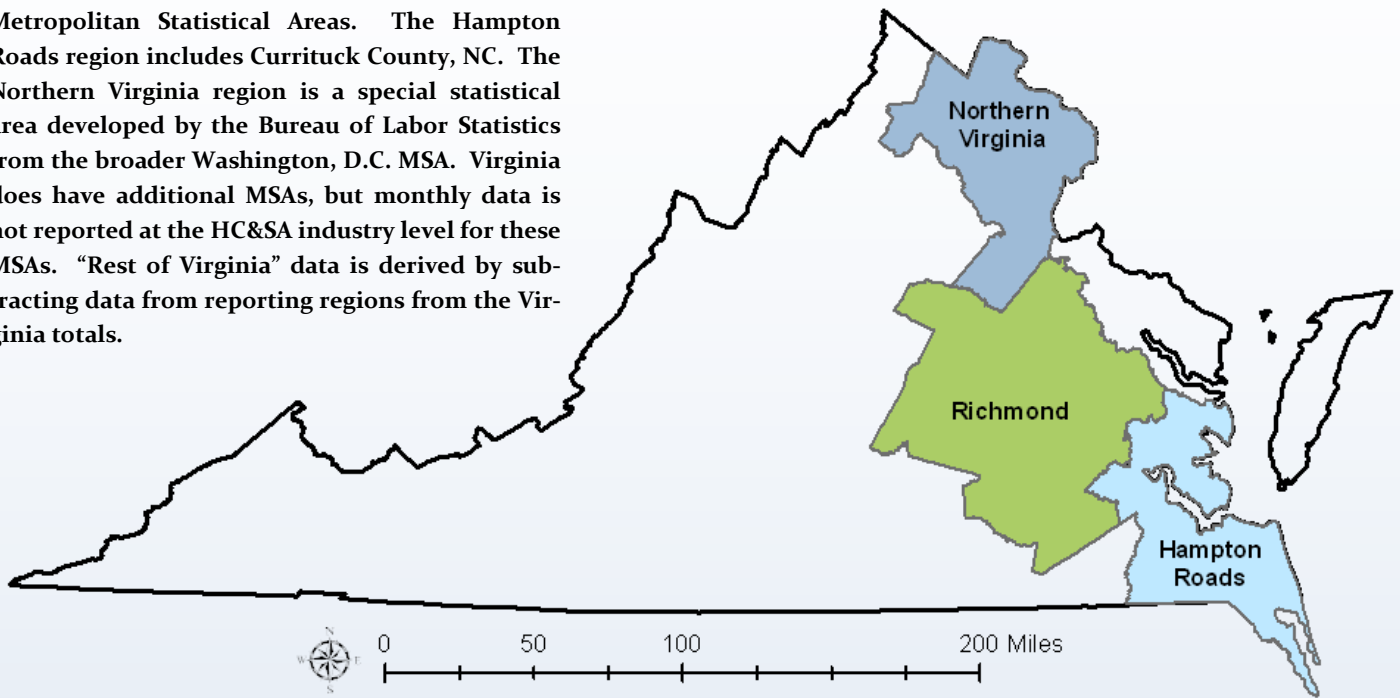
For the first time since last September, Virginia's Social Assistance subsector now has the largest share of 12-month HC&SA employment growth at 64.52%. This also represents the highest growth share for the state's Social Assistance subsector since February 2010. The Hospitals subsector also experienced a significant increase in its 12-month employment growth share in October from 32.39% of 41.94%, reaching levels not seen in more than a decade. Meanwhile, the 12-month employment growth share for Ambulatory Health Care Services fell for the third consecutive month to 11.29% in October, and the growth share for Virginia's Nursing & Residential Care Facilities remained negative yet again after falling to -17.74%.

Figure 5: Share of Previous 12-Month Growth in Virginia's HC&SA Subsectors (Not Seasonally Adjusted).



### Region Map

HWDC *Briefing Series 2* uses Federally designated Metropolitan Statistical Areas. The Hampton Roads region includes Currituck County, NC. The Northern Virginia region is a special statistical area developed by the Bureau of Labor Statistics from the broader Washington, D.C. MSA. Virginia does have additional MSAs, but monthly data is not reported at the HC&SA industry level for these MSAs. “Rest of Virginia” data is derived by subtracting data from reporting regions from the Virginia totals.



### Region Detail

Northern Virginia		Richmond		Hampton Roads	
<i>Northern VA, (Non-standard CES Area 94783)</i>		<i>Richmond, VA (MSA 40060)</i>		<i>Virginia Beach-Norfolk-Newport News, VA-NC (MSA 47260)</i>	
Counties:	Cities	Counties:	Cities	Counties:	Cities
Arlington	Alexandria	Amelia	Colonial Heights	Gloucester	Chesapeake
Clarke	Fairfax	Caroline	Hopewell	Isle of Wight	Hampton
Fairfax	Falls Church	Charles City	Petersburg	James City	Newport News
Fauquier	Fredericksburg	Chesterfield	Richmond	Mathews	Norfolk
Loudoun	Manassas	Cumberland		Surry	Poquoson
Prince William	Manassas Park	Dinwiddie		York	Portsmouth
Spotsylvania		Goochland			Suffolk
Stafford		Hanover		<i>Currituck, NC</i>	Virginia Beach
Warren		Henrico			Williamsburg
		King & Queen			
		King William			
		Louisa			
		New Kent			
		Powhatan			
		Prince George			
		Sussex			

Healthcare Workforce  
Data Center

Perimeter Center  
9960 Mayland Drive, Suite 300  
Henrico, VA 23233-1463

Phone: (804) 367-2115  
Fax: (804) 527-4434  
E-mail: [hwdc@dhp.virginia.gov](mailto:hwdc@dhp.virginia.gov)

[www.dhp.virginia.gov/hwdc/](http://www.dhp.virginia.gov/hwdc/)

*HWDC Staff:*

Dr. Elizabeth Carter, Ph.D. <i>Executive Director</i>	Laura Jackson <i>Operations Manager</i>	Christopher Coyle <i>Research Assistant</i>
---	--	--

The Department of Health Professions Healthcare Workforce Data Center works to improve the data collection and measurement of Virginia's healthcare workforce through regular assessment of workforce supply and demand issues among the 80 professions and 350,000 practitioners licensed in Virginia by DHP.

The HWDC collects data on Virginia's licensed health professionals through surveys completed during the online license renewal and application process. Survey results and data may be accessed on our website: [www.dhp.virginia.gov/hwdc/](http://www.dhp.virginia.gov/hwdc/).

The HWDC also provides a series of Virginia Healthcare Workforce Briefs based data collected by the US Department of Labor's Bureau of Labor Statistics and the US Department of Commerce' Bureau of Economic Analysis.

Virginia Healthcare Workforce Briefs:

Series 1: State & National Employment (Monthly)

Series 2: Virginia Regional Employment (Monthly)

Series 3: Income & Compensation (Quarterly)

Follow us on . . .

Tumblr: <http://vahwdc.tumblr.com/>

## About the Data

Data in this report is from the US Department of Labor Bureau of Labor Statistics' Current Employment Statistics program. The CES program surveys about 143,000 businesses and government agencies monthly. Unless otherwise noted, this series uses data that is not seasonally adjusted. Seasonal variations related to weather, holidays, weekends, seasons and other predictable variations are apparent in the data. Short-term changes may be related to seasonal changes rather than underlying trends. Data from recent months is preliminary and subject to revision in future releases from the CES. Revisions will be reported in future editions of this series. Unless otherwise noted, the CES data presented in this series:

### Includes:

- ◆ Data on employed individuals drawing a paycheck (payroll employees).
- ◆ All employees, regardless of role, occupation or hours worked.
- ◆ HC&SA employees in the private sector only.
- ◆ Persons employed by health professionals in private practice.
- ◆ Both government and private sector workers in nonfarm employment data.

### Does not include:

- ◆ Self-employed workers or volunteers, including health professionals in private practice.
- ◆ HC&SA employees in the public sector. (These are counted as government workers in monthly reports. Approximately 54,500 of Virginia's public sector workers worked in the HC&SA sector in 2010 at the federal, state and local levels).
- ◆ Information on hours worked or the quality of employment.
- ◆ Government workers in HC&SA level data. (Government workers, regardless of occupation and role, are classified as public sector employees).