



# Virginia Healthcare Workforce Briefs

Indicators from the Bureau of Labor Statistics'  
Current Employment Statistics Survey  
**Series 2: Regional & Sectoral Employment**

Series 2, Issue 44

September 2015

## Inside this Brief:

Regional Employment Growth	2
Regional HC&SA Share	3
Subsector Employment Growth	3
Subsector HC&SA Share	4
Region Map	5
About the Data	6

*Data in this report is not seasonally adjusted. HC&SA data includes employees of private firms only. Self-employed persons, including health professionals in private practice, are not included.*

## Highlights

- ◆ Data in this series is not seasonally adjusted and exhibits short-term volatility from fluctuations in holidays, weekends, weather and other seasonal factors. Estimates for the most recent month are preliminary.
- ◆ Virginia's Health Care & Social Assistance (HC&SA) sector enjoyed a strong month in August with the creation of 2,400 new jobs throughout the state. Not only does this represent a one-month annualized employment growth rate of 7.2%, but it also represents the second largest monthly employment gain for the sector so far this year.
- ◆ Virginia's HC&SA employment gains were well distributed throughout the state in August. Richmond and the Rest of Virginia each created 700 HC&SA jobs in August, while Northern Virginia's HC&SA sector added 600 jobs during the month. Hampton Roads was the laggard for the month, but even this region created 400 HC&SA jobs.
- ◆ However, HC&SA employment gains were not as well distributed by subsector. Social Assistance and Hospitals both experienced very strong employment growth in August, adding 1,500 and 1,100 jobs, respectively. Meanwhile, Nursing & Residential Care Facilities and Ambulatory Health Care Services each lost 100 jobs during the month.

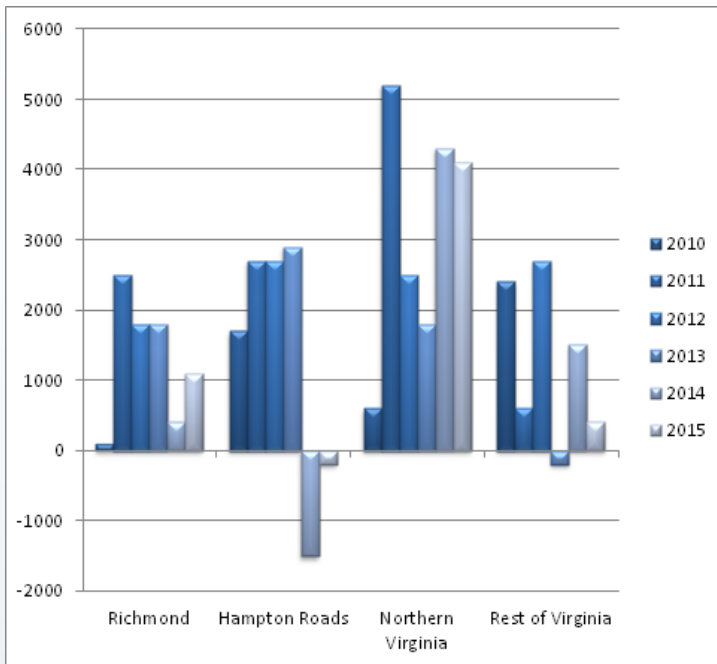
## Data in Brief

Not Seasonally Adjusted*	Employment, in Thousands				Growth Rate, Annualized		
	Aug. 2014	May 2015	July 2015	Aug. 2015	12 Month	3 Month	1 Month
<b>Virginia</b>							
Total Nonfarm	3,780.3	3,832.0	3,827.5	3,814.7	0.9%	-1.8%	-3.9%
Health Care & Social Assistance	409.8	416.7	415.6	418.0	2.0%	1.3%	7.2%
<b>Virginia Beach, Norfolk, Newport News</b>							
Total Nonfarm	761.4	762.6	770.1	766.4	0.7%	2.0%	-5.6%
Health Care & Social Assistance	87.5	86.5	85.9	86.3	-1.4%	-0.9%	5.7%
<b>Northern Virginia</b>							
Total Nonfarm	1,381.6	1,410.3	1,415.9	1,413.0	2.3%	0.8%	-2.4%
Health Care & Social Assistance	117.1	122.7	123.6	124.2	6.1%	5.0%	6.0%
<b>Richmond</b>							
Total Nonfarm	632.3	636.6	633.6	631.2	-0.2%	-3.4%	-4.5%
Health Care & Social Assistance	81.0	80.7	80.7	81.4	0.5%	3.5%	10.9%
<b>Rest of Virginia</b>							
Total Nonfarm	1,005.0	1,022.5	1,007.9	1,004.1	-0.1%	-7.0%	-4.4%
Health Care & Social Assistance	124.2	126.8	125.4	126.1	1.5%	-2.2%	6.9%

Preliminary estimates are italicized

\*Seasonally adjusted data is adjusted by the Bureau of Labor Statistics to account for weather and other seasonal changes. Since the US Bureau of Labor Statistics does not provide seasonally adjusted data at this level, this series uses non-seasonally adjusted data exclusively. Seasonal variation may account for some of the variation in time series data. When comparing data in this series to other HWDC series or other publications it is important to note whether the data reported has been seasonally adjusted.

### Regional HC&SA Employment Growth, Level



**Figure 1: Annual Change in HC&SA Employment (Not Seasonally Adjusted, Change from Dec to Dec).**

According to preliminary data released on Friday, September 18, 2015 by the U.S. Department of Labor, Bureau of Labor Statistics, Virginia’s Health Care & Social Assistance (HC&SA) sector enjoyed a strong month of employment growth after creating 2,400 jobs in August, which represents a one-month annualized employment growth rate of 7.2%.

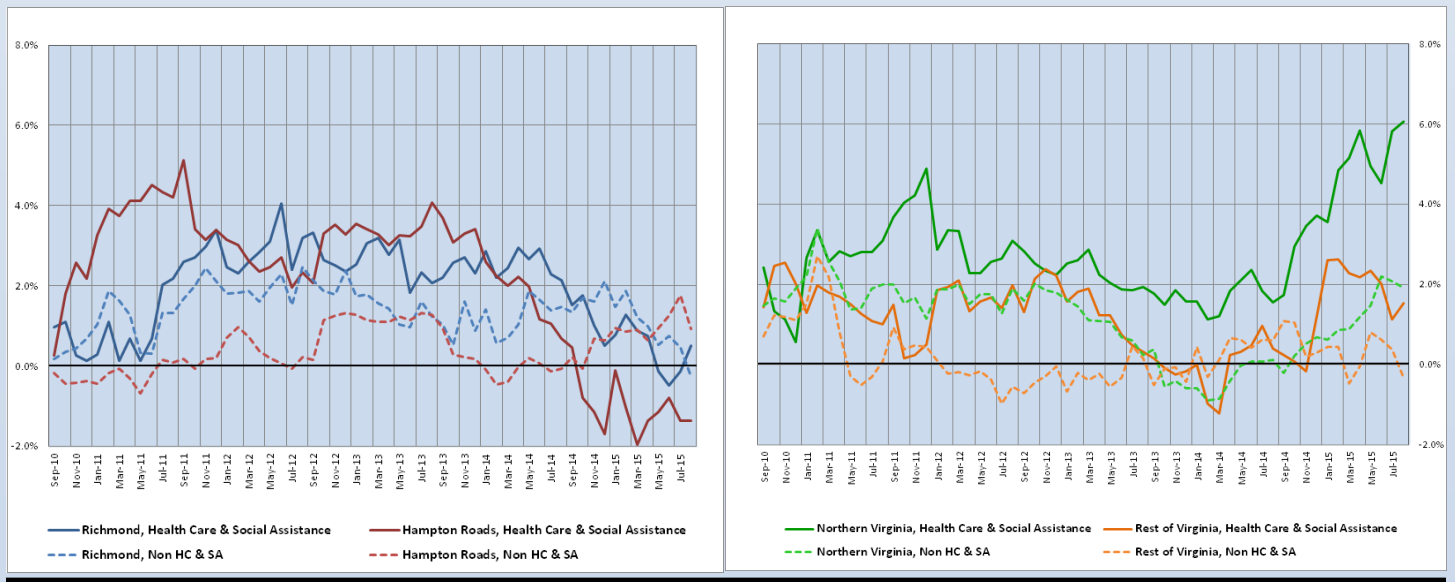
Every region of the state created jobs in its HC&SA sector in August. Richmond and the Rest of Virginia were the state’s top job creators during the month as each region saw HC&SA employment increase by 700. So far this year, Richmond’s HC&SA sector has added 1,100 jobs to the state’s economy. Only Northern Virginia has created more HC&SA jobs in 2015.

Northern Virginia added to its year-to-date employment gains in August with the creation of 600 jobs in its HC&SA sector during the month. Hampton Roads added the fewest number of new HC&SA jobs in August, but even its relatively modest gain of 400 new jobs still represents a one-month annualized employment growth rate of 5.7%

### Year-Over-Year Regional Employment Growth

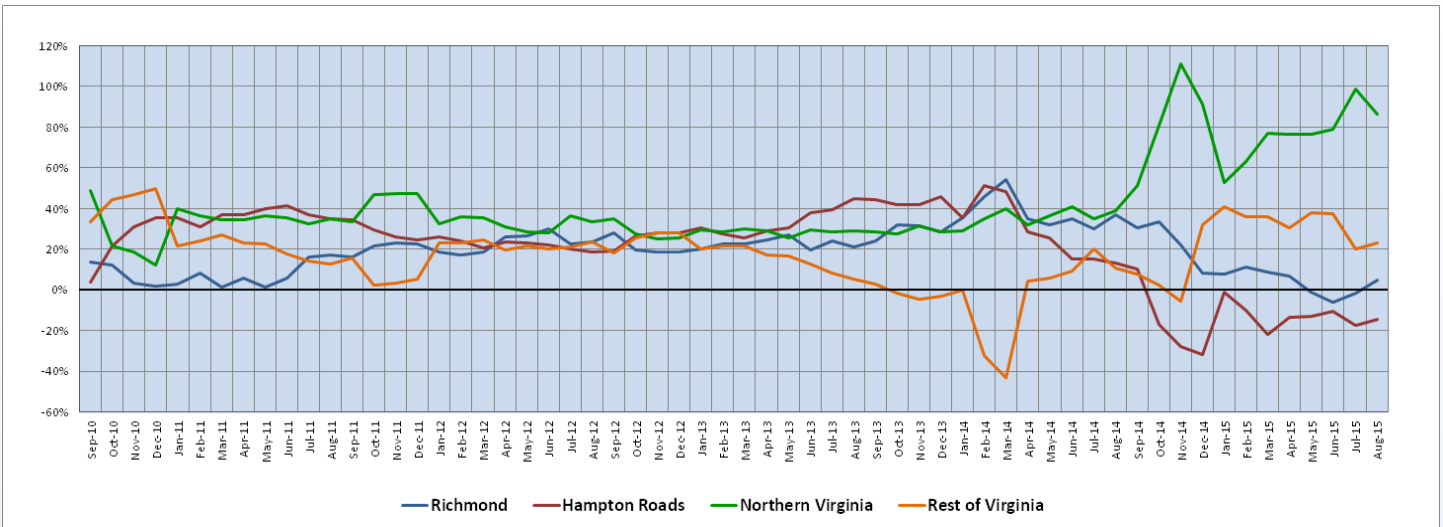
With its employment gain of 600 in August, Northern Virginia saw its year-over-year HC&SA employment growth rate increase to a decade-long high of 6.06%. Meanwhile, Virginia’s three other regions also experienced increases in their year-over-year HC&SA employment growth rates. For the first time since April, Richmond enjoyed a positive year-over-year HC&SA employment growth rate, which increased to 0.49% in August. The Rest of Virginia also saw a significant jump in its year-over-year HC&SA employment growth rate from 1.13% in July to 1.53% in August. Hampton Roads just managed to eke out a very small gain in its year-over-year HC&SA employment growth rate from -1.38% to -1.37%.

**Figure 2: Year-Over-Year Employment Growth (Not Seasonally Adjusted).**



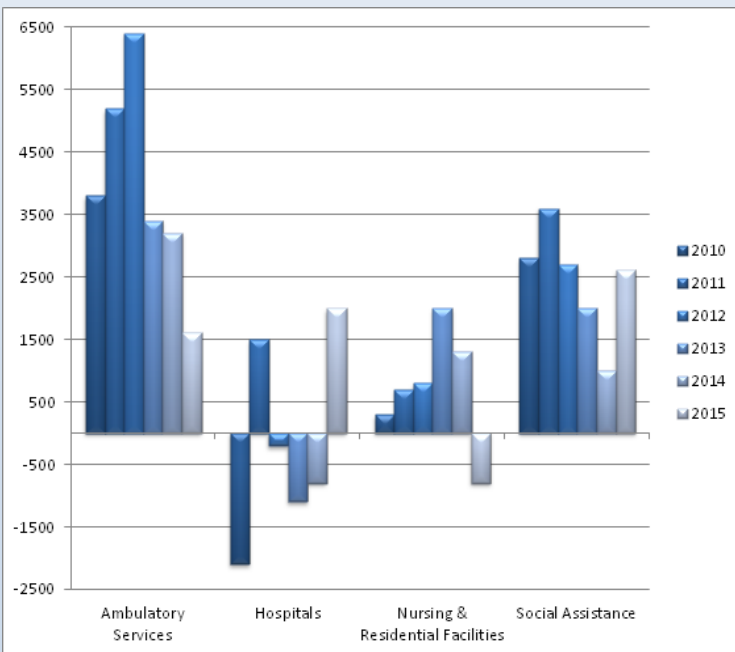
### Regional Share of 12-month Growth

**Figure 3: Regional Share of Previous 12-Month Employment Growth in Virginia’s HC&SA Sector, Not Seasonally Adjusted.**



Although Northern Virginia experienced a decline in its 12-month HC&SA employment growth share, the region has still been responsible for 86.59% of all employment growth in the state over the past year. At the same time, the Rest of Virginia saw a small increasing in its 12-month HC&SA employment growth share to 23.17% in August, although the Rest of Virginia’s growth rate has been generally trending downward throughout 2015. Richmond’s HC&SA sector saw its 12-month employment growth share rebound into positive territory at 4.88% during the month. Although this is a welcome development, its current level is well below the nearly 37% growth share from one year ago. As for Hampton Roads, its 12-month HC&SA employment growth share yet again remained in negative territory at -14.63%.

### Subsector Employment Growth



**Figure 4: Annual & YTD Change in HC&SA Subsector Employment (Not Seasonally Adjusted, Dec. to Dec.)**

Although all four regions of Virginia enjoyed positive HC&SA employment growth in August, the same can not be said for the state’s four HC&SA subsectors. Reversing two consecutive months of employment losses, Virginia’s Social Assistance subsector was the biggest gainer during the month, adding 1,500 jobs to the state’s economy, which represents a one-month annualized employment growth rate of 27.7%. With this gain, Virginia’s Social Assistance subsector has created 2,600 jobs so far this year, the most of any subsector in the state.

However, the Hospitals subsector is not far behind with the creation of 2,000 jobs in 2015. This year-to-date employment gain was buoyed by the creation of 1,100 jobs in August. Meanwhile, even after a modest decline of 100 jobs in August, Ambulatory Health Care Services has also made a positive contribution to year-to-date HC&SA employment with 1,600 jobs added so far in 2015. As for Nursing & Residential Care Facilities, it continued to produce relative weak results with a loss of 100 jobs in August.

### Distribution of Growth by Subsector

Not Seasonally Adjusted	Employment, in Thousands				Growth Rate, Annualized		
	Aug. 2015	May 2015	July 2015	Aug. 2015	12 Month	3 Month	1 Month
<b>Virginia</b>							
Health Care & Social Assistance	409.8	416.7	415.6	<i>418.0</i>	2.0%	1.3%	7.2%
<i>Ambulatory Health Care Services</i>	162.4	165.6	166.6	<i>166.5</i>	2.5%	2.2%	-0.7%
<i>Hospitals</i>	101.3	102.2	103.0	<i>104.1</i>	2.8%	7.6%	13.6%
<i>Nursing &amp; Residential Care Facilities</i>	73.4	73.2	73.2	<i>73.1</i>	-0.4%	-0.5%	-1.6%
<i>Social Assistance</i>	72.7	75.7	72.8	<i>74.3</i>	2.2%	-7.2%	27.7%
<b>Virginia Beach, Norfolk, Newport News</b>							
Health Care & Social Assistance	87.5	86.5	85.9	<i>86.3</i>	-1.4%	-0.9%	5.7%
<i>Hospitals</i>	21.7	21.4	21.4	<i>21.6</i>	-0.5%	3.8%	11.8%
<b>Northern Virginia</b>							
Health Care & Social Assistance	117.1	122.7	123.6	<i>124.2</i>	6.1%	5.0%	6.0%
<i>Ambulatory Health Care Services</i>	54.2	56.0	57.1	<i>57.3</i>	5.7%	9.6%	4.3%
<i>Hospitals</i>	23.3	24.2	24.1	<i>24.4</i>	4.7%	3.3%	16.0%

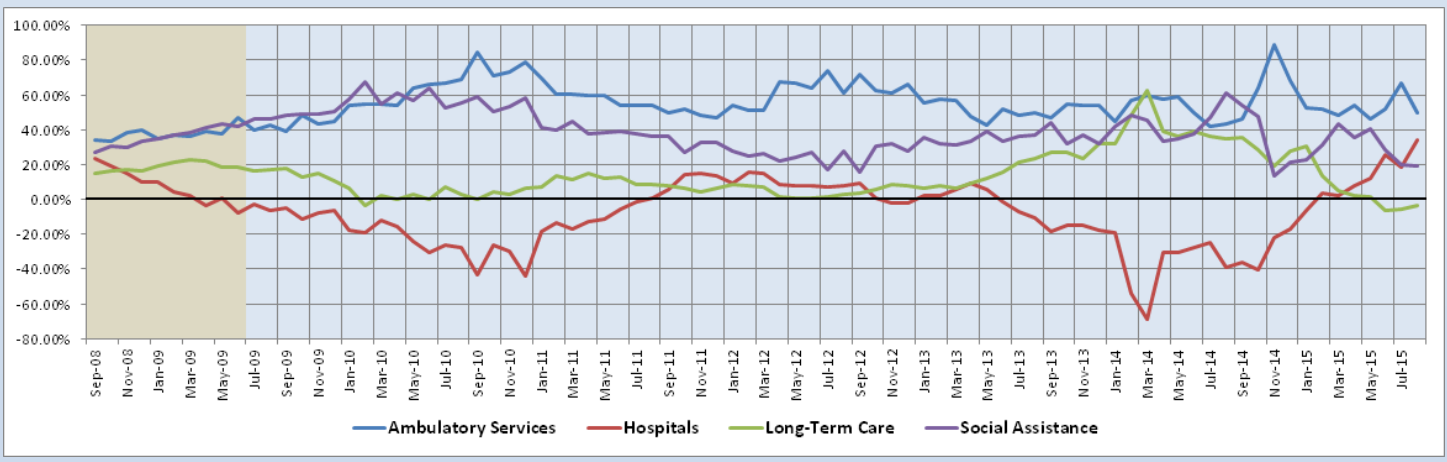
Preliminary estimates are italicized

Although the Social Assistance subsector experienced very rapid employment growth in August, it has been Virginia's Hospitals that have enjoyed more consistently strong employment growth over the past year. Not only has this subsector seen employment grow at a 7.6% annualized rate over the past three months, but it has also experienced a 2.8% employment gain over the past 12 months. Both of these long-term growth rates are the highest among Virginia's four HC&SA subsectors. Meanwhile, despite August's employment decline, Ambulatory Health Care Services is the only other HC&SA subsector besides Virginia's Hospitals that currently has both a positive three-month and 12-month employment growth rate.

### Share of 12-Month Growth by Subsector

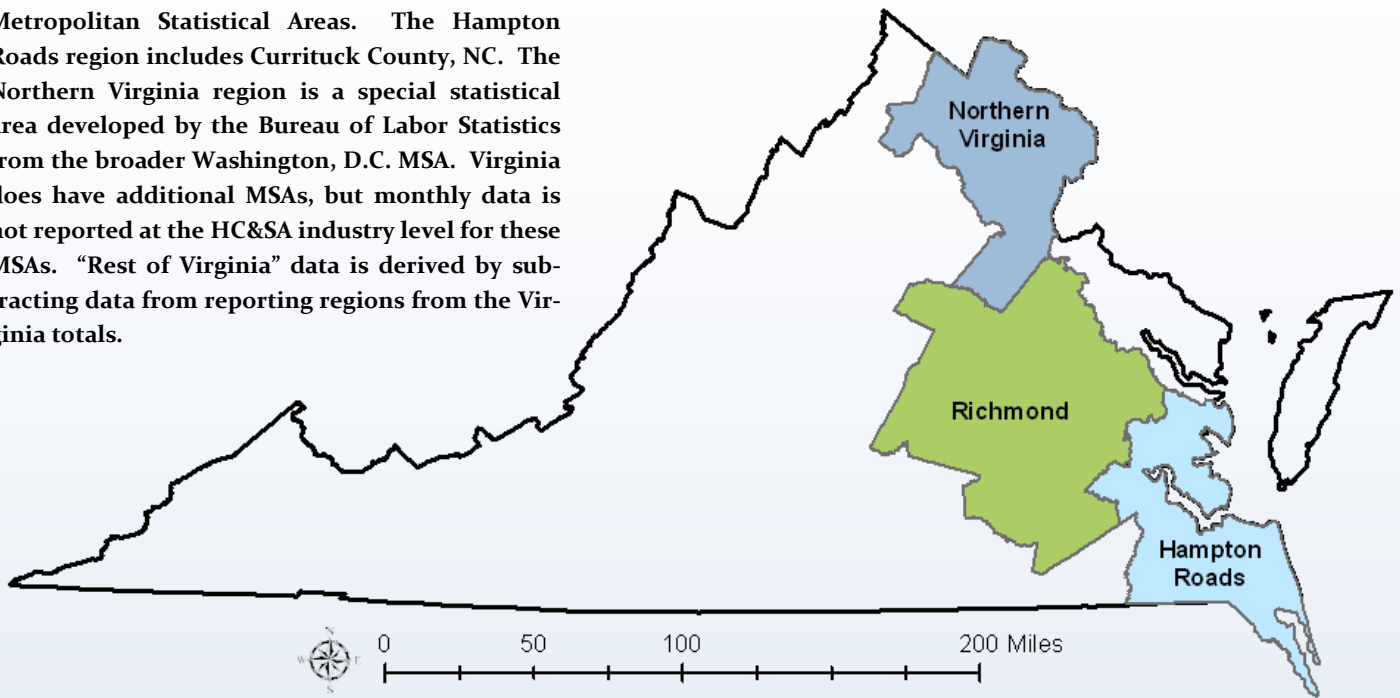
Over the past 12 months, Ambulatory Health Care Services has been responsible for exactly half of all HC&SA employment growth in the state. At the same time, Virginia's Hospitals have continued to see its 12-month employment growth share trend upward. Virginia's Hospitals are currently responsible for 34.15% of the state's HC&SA employment growth over the past year. This represents the largest 12-month growth share for the state's Hospitals in more than a decade. In addition, Virginia's Hospitals overtook the Social Assistance subsector as the second-largest contributor to the state's long-term HC&SA employment growth after Social Assistance saw its 12-month employment growth share fall to 19.5% in August.

**Figure 5: Share of Previous 12-Month Growth in Virginia's HC&SA Subsectors (Not Seasonally Adjusted).**



### Region Map

HWDC *Briefing Series 2* uses Federally designated Metropolitan Statistical Areas. The Hampton Roads region includes Currituck County, NC. The Northern Virginia region is a special statistical area developed by the Bureau of Labor Statistics from the broader Washington, D.C. MSA. Virginia does have additional MSAs, but monthly data is not reported at the HC&SA industry level for these MSAs. “Rest of Virginia” data is derived by subtracting data from reporting regions from the Virginia totals.



### Region Detail

Northern Virginia		Richmond		Hampton Roads	
<i>Northern VA, (Non-standard CES Area 94783)</i>		<i>Richmond, VA (MSA 40060)</i>		<i>Virginia Beach-Norfolk-Newport News, VA-NC (MSA 47260)</i>	
Counties:	Cities	Counties:	Cities	Counties:	Cities
Arlington	Alexandria	Amelia	Colonial Heights	Gloucester	Chesapeake
Clarke	Fairfax	Caroline	Hopewell	Isle of Wight	Hampton
Fairfax	Falls Church	Charles City	Petersburg	James City	Newport News
Fauquier	Fredericksburg	Chesterfield	Richmond	Mathews	Norfolk
Loudoun	Manassas	Cumberland		Surry	Poquoson
Prince William	Manassas Park	Dinwiddie		York	Portsmouth
Spotsylvania		Goochland			Suffolk
Stafford		Hanover			Virginia Beach
Warren		Henrico		<i>Currituck, NC</i>	Williamsburg
		King & Queen			
		King William			
		Louisa			
		New Kent			
		Powhatan			
		Prince George			
		Sussex			

Healthcare Workforce  
Data Center

Perimeter Center  
9960 Mayland Drive, Suite 300  
Henrico, VA 23233-1463

Phone: (804) 367-2115  
Fax: (804) 527-4434  
E-mail: [hwdc@dhp.virginia.gov](mailto:hwdc@dhp.virginia.gov)

[www.dhp.virginia.gov/hwdc/](http://www.dhp.virginia.gov/hwdc/)

*HWDC Staff:*

Dr. Elizabeth Carter, Ph.D. <i>Executive Director</i>	Laura Jackson <i>Operations Manager</i>	Christopher Coyle <i>Research Assistant</i>
---	--	--

The Department of Health Professions Healthcare Workforce Data Center works to improve the data collection and measurement of Virginia's healthcare workforce through regular assessment of workforce supply and demand issues among the 80 professions and 350,000 practitioners licensed in Virginia by DHP.

The HWDC collects data on Virginia's licensed health professionals through surveys completed during the online license renewal and application process. Survey results and data may be accessed on our website: [www.dhp.virginia.gov/hwdc/](http://www.dhp.virginia.gov/hwdc/).

The HWDC also provides a series of Virginia Healthcare Workforce Briefs based data collected by the US Department of Labor's Bureau of Labor Statistics and the US Department of Commerce' Bureau of Economic Analysis.

Virginia Healthcare Workforce Briefs:

Series 1: State & National Employment (Monthly)

Series 2: Virginia Regional Employment (Monthly)

Series 3: Income & Compensation (Quarterly)

Follow us on . . .

Tumblr: <http://vahwdc.tumblr.com/>

## About the Data

Data in this report is from the US Department of Labor Bureau of Labor Statistics' Current Employment Statistics program. The CES program surveys about 143,000 businesses and government agencies monthly. Unless otherwise noted, this series uses data that is not seasonally adjusted. Seasonal variations related to weather, holidays, weekends, seasons and other predictable variations are apparent in the data. Short-term changes may be related to seasonal changes rather than underlying trends. Data from recent months is preliminary and subject to revision in future releases from the CES. Revisions will be reported in future editions of this series. Unless otherwise noted, the CES data presented in this series:

### Includes:

- ◆ Data on employed individuals drawing a paycheck (payroll employees).
- ◆ All employees, regardless of role, occupation or hours worked.
- ◆ HC&SA employees in the private sector only.
- ◆ Persons employed by health professionals in private practice.
- ◆ Both government and private sector workers in nonfarm employment data.

### Does not include:

- ◆ Self-employed workers or volunteers, including health professionals in private practice.
- ◆ HC&SA employees in the public sector. (These are counted as government workers in monthly reports. Approximately 54,500 of Virginia's public sector workers worked in the HC&SA sector in 2010 at the federal, state and local levels).
- ◆ Information on hours worked or the quality of employment.
- ◆ Government workers in HC&SA level data. (Government workers, regardless of occupation and role, are classified as public sector employees).