



Virginia Healthcare Workforce Briefs

Indicators from the Bureau of Labor Statistics'
Current Employment Statistics Survey
Series 1: State & National Employment

Series 1, Issue 56

September 2016

Highlights

- ◆ According to preliminary estimates, Virginia's Health Care & Social Assistance (HC&SA) sector created 800 jobs in August, which represents a one-month annualized employment growth rate of 2.2%. Over the past four months, Virginia's HC&SA sector has added 8,800 jobs to the state's economy. This gain represents 92% of all HC&SA employment growth in the state in 2016.
- ◆ Virginia's total nonfarm payroll increased by 13,100 in August, which represents its largest one-month gain since February. The state's total nonfarm payroll has increased in each of the past three months. During this period, 29,200 new jobs were created throughout the state.
- ◆ The national HC&SA sector created 36,100 new jobs in August. Not only does this result represent its lowest monthly job gain since April, but it is also well below its 12-moving average: Over the past year, the national HC&SA sector has created an average of 46,333 jobs per month.
- ◆ After two consecutive months in which more than 200,000 new jobs were created, the nation's total nonfarm payroll experienced a slight slowdown in August as employment increased by only 151,000 during the month. This represents a one-month annualized growth rate of 1.3%.

Inside this Brief:

Virginia HC&SA Employment	2
Virginia Employment	2
National Employment	3
State Employment Growth	3
About the Data	4

Data in the report are seasonally adjusted. Self-employed persons, including health professionals in private practice, are not included.

Data in Brief

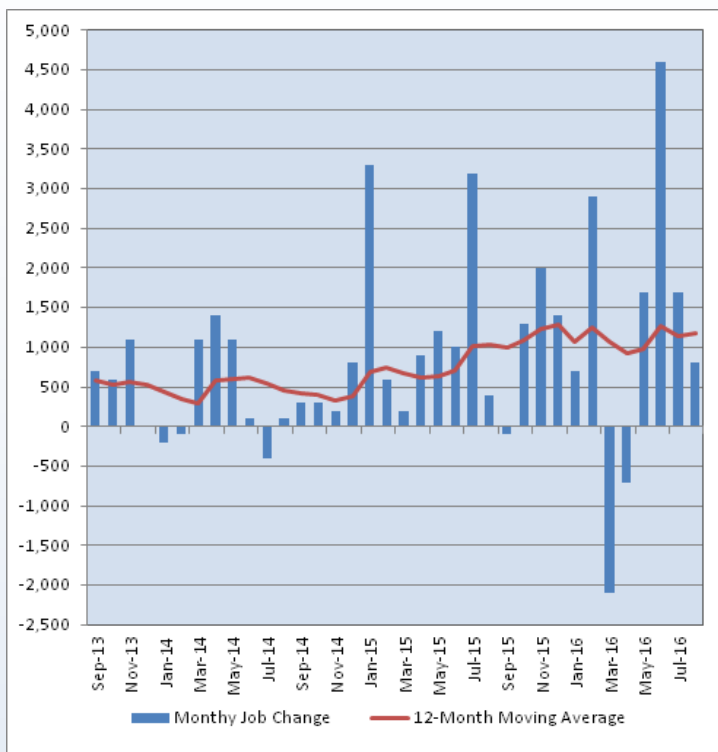
Seasonally Adjusted*	Employment, in Thousands				Growth Rate, Annualized		
	Aug. 2015	May 2016	July 2016	Aug. 2016	12 Month	3 Month	1 Month
Nonfarm, Total							
Virginia	3,860.7	3,904.0	3,920.1	3,933.2	1.9%	3.0%	4.1%
National	142,151.0	143,901.0	144,447.0	144,598.0	1.7%	2.0%	1.3%
Health Care & Social Assistance							
Virginia	421.5	428.6	434.9	435.7	3.4%	6.8%	2.2%
National	18,673.4	19,087.6	19,193.3	19,229.4	3.0%	3.0%	2.3%
All Other Nonfarm							
Virginia	3,439.2	3,475.4	3,485.2	3,497.5	1.7%	2.6%	4.3%
National	123,477.6	124,813.4	125,253.7	125,368.6	1.5%	1.8%	1.1%

Preliminary estimates are italicized

*Seasonally adjusted data are adjusted by the Bureau of Labor Statistics to account for weather, holidays and other seasonal changes. Economists use seasonally adjusted data to reveal underlying trends over time. This series uses seasonally adjusted data exclusively. When comparing data in this series to other HWDC series, or publications from other sources, it is important to note whether the data reported have been seasonally adjusted.

Virginia HC&SA Employment

Figure 1: Monthly Change in Employment in Virginia's Health Care & Social Assistance Sector, Seasonally Adjusted.



According to the preliminary data released on Tuesday, September 20, 2016 by the U.S. Department of Labor, Bureau of Labor Statistics, Virginia's HC&SA sector increased employment for the fourth consecutive month in August with the creation of 800 new jobs, which represents a one-month annualized employment growth rate of 2.2%.

Over these past four months of positive employment growth, Virginia's HC&SA sector has created 8,800 jobs, which represents 92% of the 9,600 HC&SA new jobs that have been produced throughout the state so far this year. Even with these strong results over the past four months, however, employment growth in 2016 continues to lag behind the gains observed in the previous year: Between January and August of 2015, Virginia's HC&SA sector had produced 10,800 new jobs.

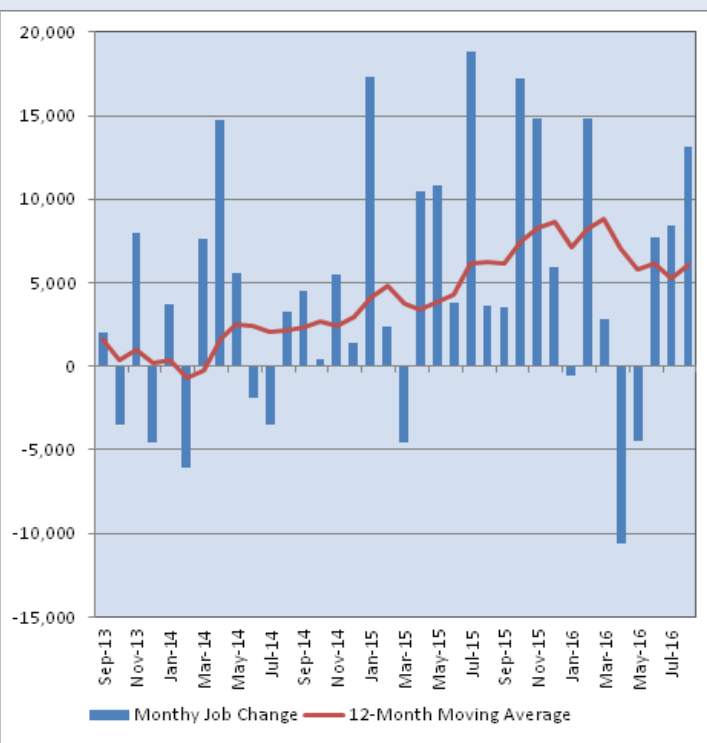
Over the past 12 months, Virginia's HC&SA sector has produced an average of 1,183 jobs per month. This represents a 12-month employment growth rate of 3.4%, which exceeds both the national average for the HC&SA sector and the state's total nonfarm payroll.

Virginia Employment

According to preliminary estimates, Virginia's total nonfarm payroll increased by 13,100 in August, which represents a one-month annualized employment growth rate of 4.1%. August's employment gain also represents the third consecutive month in which Virginia's total nonfarm payroll increased. During these three months, 29,200 new jobs were created throughout the state. Not only does this represent a three-month annualized employment growth rate of 3.0%, but it also represents 94% of all nonfarm employment growth in the state so far in 2016.

During the past year, Virginia's total nonfarm payroll has increased by an average of 6,042 jobs per month. Although this current 12-month moving average is well above the 5,250 jobs created per month in July, it still slightly lags behind the year-ago period when an average of 6,200 jobs were created per month over a 12-month period. At the same time, Virginia's HC&SA sector has become a more important contributor to the state's overall employment growth. Virginia's HC&SA sector is responsible for 20% of the growth in the state's total nonfarm payroll over the past 12 months, which is up from 17% in the year-ago period.

Figure 2: Monthly Change in Employment in Virginia's Total Nonfarm Payroll, Seasonally Adjusted.

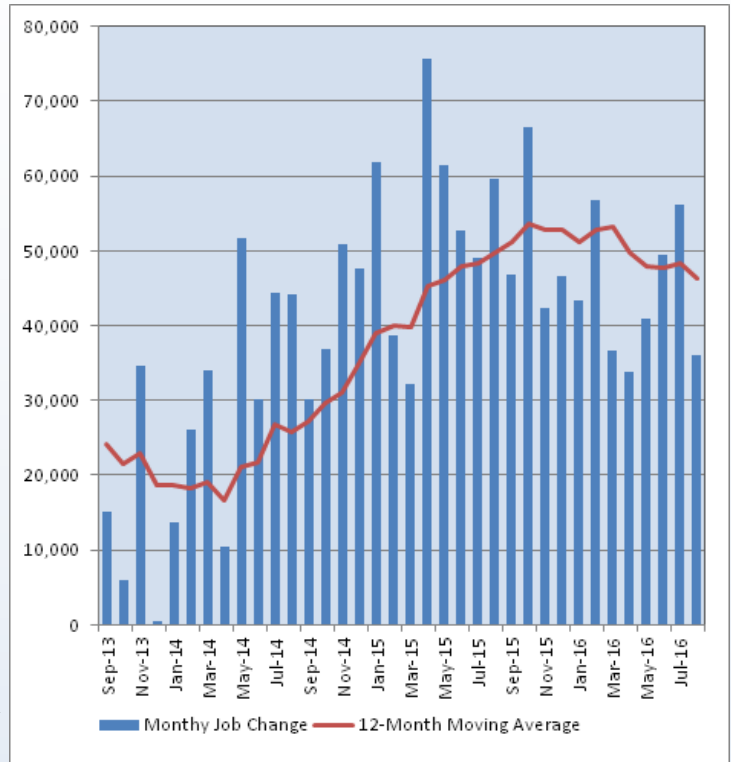


National Employment

Employment in the national HC&SA sector slowed down slightly in August after just 36,100 new jobs were created during the month. This represents a one-month annualized employment growth rate of 2.3%. Not only is this well below its 12-month employment growth rate of 3.0%, but it also represents its lowest monthly job gain since April. In addition, the 12-month moving average of the level change in national HC&SA employment fell to its lowest level in more than one year: Including August's employment result, the national HC&SA sector has created an average of 46,333 jobs per month over the past year.

The nation's total nonfarm payroll also experienced a bit of a slowdown in August. After creating 546,000 nonfarm jobs over the previous two months, the overall national economy only produced 151,000 new nonfarm jobs in August. This gain represents a one-month annualized employment growth rate of 1.3%. Meanwhile, the nation's total nonfarm payroll has increased by 2.45 million over the past 12 months, which represents a 1.7% growth rate. The national HC&SA sector has been responsible for 23% of this growth in total nonfarm payroll.

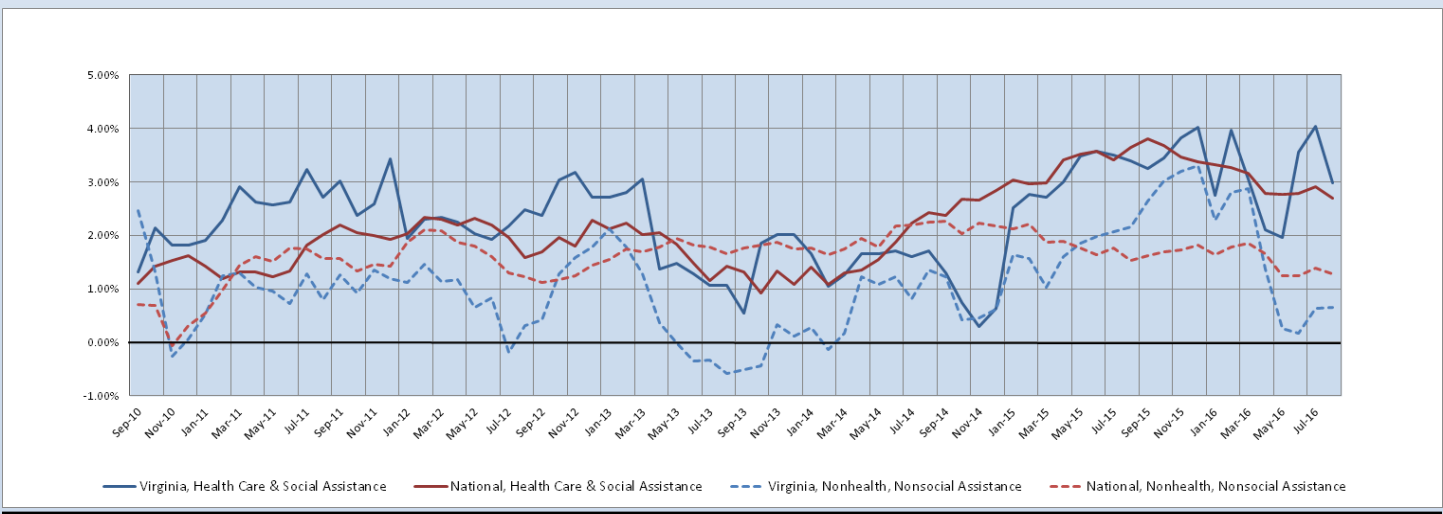
Figure 3: Monthly Change in Employment in National Health Care & Social Assistance Sector, Seasonally Adjusted



State Employment Growth

After reaching an eight-year high of 4.03% in July, the six-month employment growth rate moving average of Virginia's HC&SA sector fell considerably in August to 2.99%. The six-month moving average of the employment growth rate in the national HC&SA sector also fell during the month, although its decline was more modest from 2.92% to 2.69%. However, at its current level, this moving average for the national HC&SA sector has fallen to a low not seen since November 2014. With respect to Virginia's total nonfarm payroll, its six-month employment growth rate moving average increased slightly during the month from 0.64% to 0.66%. As for the nation's total nonfarm payroll, its six-month employment growth rate moving average dipped slightly in August from 1.39% to 1.29%.

Figure 4: Six-Month Moving Average, Employment Growth, Seasonally Adjusted



Healthcare Workforce Data Center

Perimeter Center
9960 Mayland Drive, Suite 300
Henrico, VA 23233-1463

Phone: (804) 367-2115
Fax: (804) 527-4434
E-mail: hwdc@dhp.virginia.gov

www.dhp.virginia.gov/hwdc/

HWDC Staff:

Elizabeth Carter, Ph.D. <i>Executive Director</i>	Yetty Shobo, Ph.D. <i>Deputy Director</i>
Laura Jackson <i>Operations Manager</i>	Christopher Coyle <i>Research Assistant</i>

Follow us on. . .

Tumblr: <http://vahwdc.tumblr.com/>

The Department of Health Professions Healthcare Workforce Data Center works to improve the data collection and measurement of Virginia's healthcare workforce through regular assessment of workforce supply and demand issues among the 80 professions and 350,000 practitioners licensed in Virginia by DHP.

The HWDC collects data on Virginia's licensed health professionals through surveys completed during the online license renewal and application process. Survey results and data may be accessed on our website: www.dhp.virginia.gov/hwdc/.

The HWDC also provides a series of Virginia Healthcare Workforce Briefs based on data collected by the US Department of Labor's Bureau of Labor Statistics and the US Department of Commerce' Bureau of Economic Analysis.

Virginia Healthcare Workforce Briefs:

Series 1: State & National Employment (Monthly)

Series 2: Virginia Regional Employment (Monthly)

Series 3: Income & Compensation (Quarterly)

About the Data

Data in this report are from the US Department of Labor, Bureau of Labor Statistics' Current Employment Statistics program. The CES program surveys about 143,000 businesses and government agencies monthly. Unless otherwise noted, this series uses seasonally-adjusted data that removes seasonal variations related to weather, holidays, weekends, seasons and other predictable variations. This allows us to better examine underlying trends in the labor market. Data from recent months are preliminary and subject to revision in future releases from the CES. Revisions will be reported in future editions of this series. Unless otherwise noted, the CES data presented in this series:

Includes:

- ◆ Data on employed individuals drawing a paycheck (payroll employees).
- ◆ All employees, regardless of role, occupation or hours worked.
- ◆ HC&SA employees in the private sector only.
- ◆ Persons employed by health professionals in private practice.
- ◆ Both government and private sector workers in nonfarm employment data.

Does not include:

- ◆ Self-employed workers or volunteers, including health professionals in private practice.
- ◆ HC&SA employees in the public sector. (These are counted as government workers in monthly reports).
- ◆ Information on hours worked or the quality of employment.
- ◆ Government workers in HC&SA level data. (Government workers, regardless of occupation and role, are classified as public sector employees).