



# Virginia Healthcare Workforce Briefs

Indicators from the Bureau of Labor Statistics'  
Current Employment Statistics Survey  
**Series 1: State & National Employment**

Series 1, Issue 65

August 2017

## Highlights

- ◆ According to preliminary estimates, Virginia's Health Care & Social Assistance (HC&SA) sector experienced no change in employment in July. Regardless, employment in Virginia's HC&SA sector has still grown at a 2.4% annualized rate over the past three months. In addition, this sector has created 5,000 jobs across the state so far in 2017.
- ◆ Although Virginia's HC&SA sector did not create any new jobs in July, the state's total nonfarm payroll still increased by 8,300 during the month, which represents a one-month annualized growth rate of 2.5%. So far this year, Virginia's total nonfarm payroll has grown by 39,600.
- ◆ Employment in the national HC&SA sector increased by 45,000 in July. This gain translates into a one-month annualized employment growth rate of 2.8%. Over the past 12 months, the national HC&SA sector has created an average of 35,842 jobs per month.
- ◆ For the third time in the past four months, the nation's total nonfarm payroll has grown by more than 200,000. In July, the nation's total nonfarm payroll increased by 209,000, which represents a one-month annualized growth rate of 1.7%.

### Inside this Brief:

Virginia HC&SA Employment	2
Virginia Employment	2
National Employment	3
State Employment Growth	3
About the Data	4

Data in the report are seasonally adjusted. Self-employed persons, including health professionals in private practice, are not included.

## Data in Brief

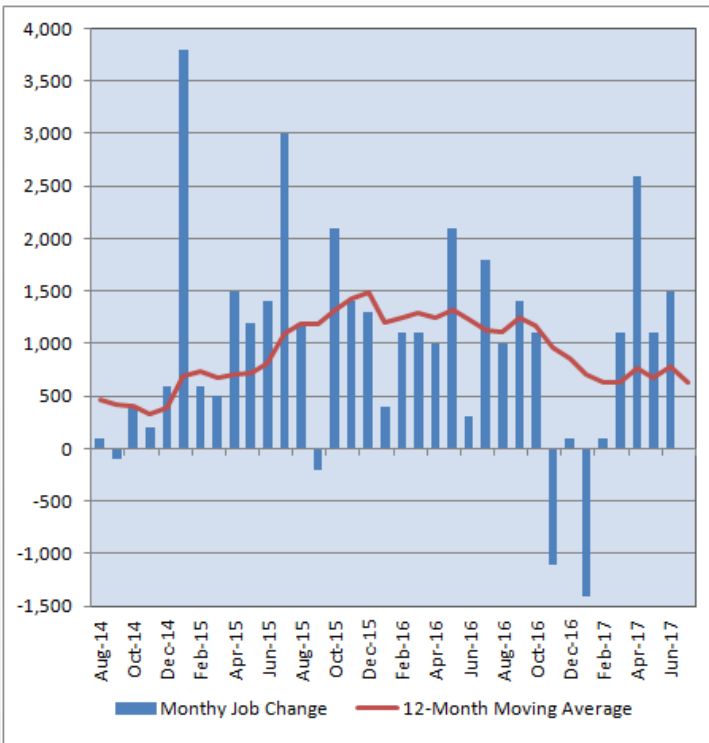
Seasonally Adjusted*	Employment, in Thousands				Growth Rate, Annualized		
	July 2016	Apr. 2017	June 2017	July 2017	12 Month	3 Month	1 Month
<b>Nonfarm, Total</b>							
Virginia	3,915.6	3,953.6	3,967.6	3,975.9	1.5%	2.3%	2.5%
National	144,457.0	146,030.0	146,406.0	146,615.0	1.5%	1.6%	1.7%
<b>Health Care &amp; Social Assistance</b>							
Virginia	435.9	440.8	443.4	443.4	1.7%	2.4%	0.0%
National	19,094.6	19,394.8	19,479.7	19,524.7	2.3%	2.7%	2.8%
<b>All Other Nonfarm</b>							
Virginia	3,479.7	3,512.8	3,524.2	3,532.5	1.5%	2.3%	2.9%
National	125,362.4	126,635.2	126,926.3	127,090.3	1.4%	1.4%	1.6%

Preliminary estimates are italicized

\*Seasonally adjusted data are adjusted by the Bureau of Labor Statistics to account for weather, holidays and other seasonal changes. Economists use seasonally adjusted data to reveal underlying trends over time. This series uses seasonally adjusted data exclusively. When comparing data in this series to other HWDC series, or publications from other sources, it is important to note whether the data reported have been seasonally adjusted.

## Virginia HC&SA Employment

**Figure 1: Monthly Change in Employment in Virginia's Health Care & Social Assistance Sector, Seasonally Adjusted.**



According to the preliminary data released on Friday, August 18, 2017 by the U.S. Department of Labor, Bureau of Labor Statistics, Virginia's HC&SA sector experienced no change in employment during the month of July. Although Virginia's HC&SA sector failed to create any jobs in July, it still produced strong employment growth throughout much of 2017. Over the past three months, Virginia's HC&SA sector has created 2,600 jobs, which represents a three-month annualized employment growth rate of 2.4%. In addition, this sector has been responsible for the creation of 5,000 new jobs across the state so far this year.

Although long-term HC&SA job creation in the state has not been quite as impressive, it still remains an important contributor to statewide employment growth. Over the past 12 months, Virginia's HC&SA sector has created 7,500 jobs, which represents a 12-month employment growth rate of 1.7%. Not only does this exceed the 1.5% 12-month growth rate in the state's total nonfarm payroll, but it also represents 12% of all statewide employment growth over the past year.

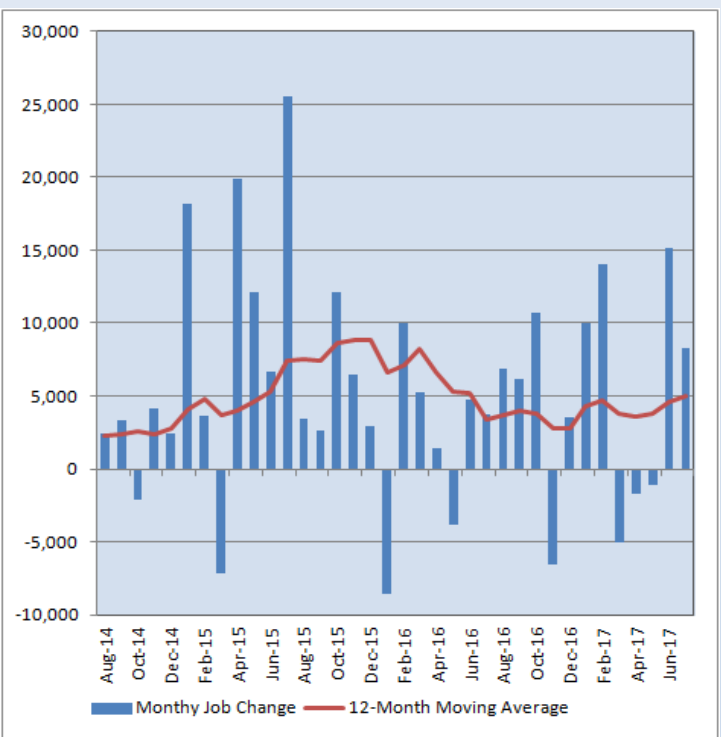
## Virginia Employment

Despite the lack of any employment growth in Virginia's HC&SA sector in July, the state's total nonfarm payroll still increased by 8,300 during the month, which represents a one-month annualized growth rate of 2.5%. After experiencing three consecutive months of declines between March and May, Virginia's total nonfarm payroll has shown signs of resurgent growth since June. In just the past two months, Virginia's total nonfarm payroll has increased by 23,400. This gain represents 59% of the state's year-to-date growth in its total nonfarm payroll.

So far this year, Virginia's total nonfarm payroll has increased by 39,600. This represents a marked improvement relative to last year. At the same point in 2016, the state's total nonfarm payroll had only increased by 12,800. This development suggests that Virginia's overall economy has improved in 2017.

Over the past 12 months, Virginia's total nonfarm payroll has increased by an average of 5,025 per month, which translates into a 1.5% growth rate. This is in line with the current 12-month growth rate in the nation's total nonfarm payroll.

**Figure 2: Monthly Change in Employment in Virginia's Total Nonfarm Payroll, Seasonally Adjusted.**

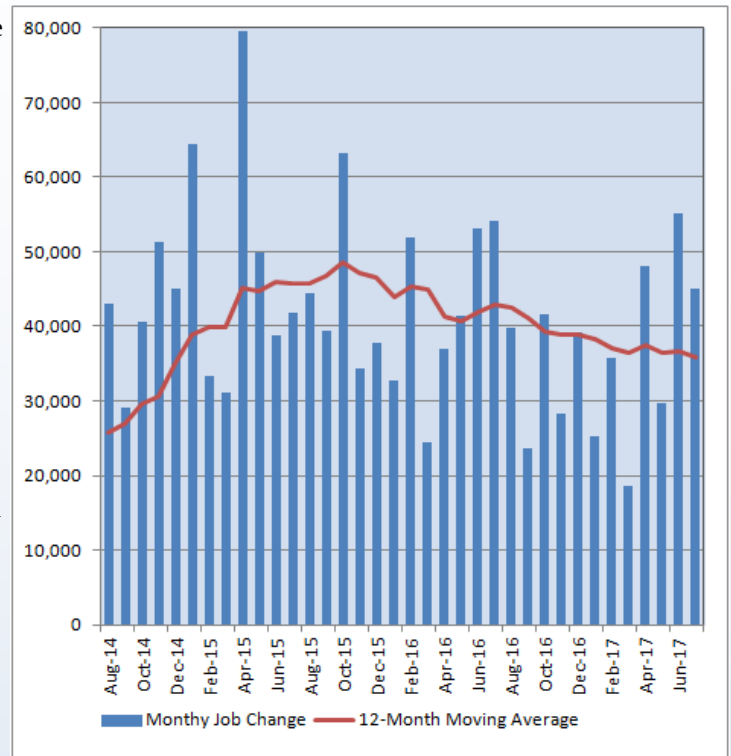


## National Employment

In June, the national HC&SA sector enjoyed its strongest one-month employment gain since 2015 after creating 55,200 new jobs during the month. This sector followed up on those impressive gains with another month of solid employment growth. Employment in the national HC&SA sector increased by 45,000 in July, which represents a one-month annualized growth rate of 2.8%. This month's employment growth suggests that the national HC&SA sector is showing signs of improvement. Over the past 12 months, the national HC&SA sector has created an average of 35,842 jobs per month, which translates into a 2.3% employment growth rate.

The nation's total nonfarm payroll also exhibited strong growth in July. After increasing by 231,000 in June, the nation's total nonfarm payroll grew by an additional 209,000 in July. This gain represents a one-month annualized growth rate of 1.7%. In addition, this also represents the third time in the past four months in which growth in the nation's total nonfarm payroll has exceeded 200,000. So far in 2017, the nation's total nonfarm payroll has increased by a total of 1.29 million.

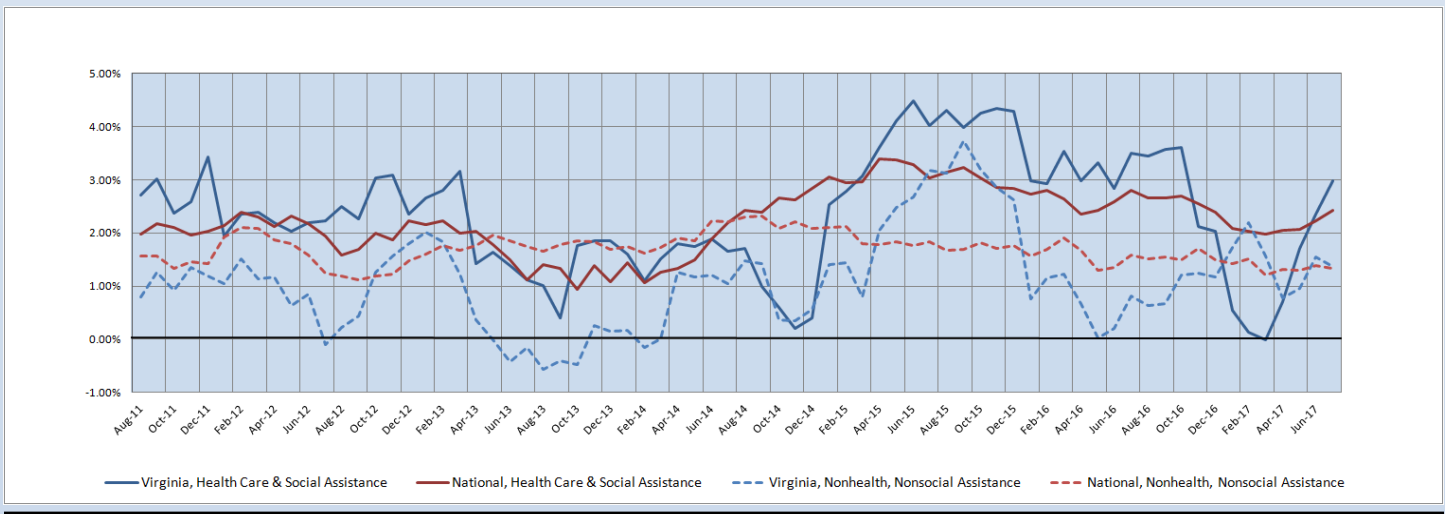
**Figure 3: Monthly Change in Employment in National Health Care & Social Assistance Sector, Seasonally Adjusted**



## State Employment Growth

For the fourth consecutive month, the six-month employment growth rate moving average of Virginia's HC&SA sector has increased. After experiencing a precipitous decline in the latter half of 2016, the six-month employment growth rate moving average of Virginia's HC&SA sector has rebounded strongly since March. In July, this moving average increased from 2.35% to 2.98%, thereby reaching its highest level so far this year. At its current level, it is also more than double the corresponding six-month growth rate moving average of Virginia's total nonfarm payroll, which fell from 1.55% to 1.37% in July. Meanwhile, the six-month employment growth rate moving average of the national HC&SA sector increased from 2.22% to 2.43%. As for the nation's total nonfarm payroll, its corresponding moving average dipped slightly from 1.38% to 1.34%.

**Figure 4: Six-Month Moving Average, Employment Growth, Seasonally Adjusted**



## Healthcare Workforce Data Center

Perimeter Center  
9960 Mayland Drive, Suite 300  
Henrico, VA 23233-1463

Phone: (804) 367-2115  
Fax: (804) 527-4434  
E-mail: [hwdc@dhp.virginia.gov](mailto:hwdc@dhp.virginia.gov)

[www.dhp.virginia.gov/hwdc/](http://www.dhp.virginia.gov/hwdc/)

### *HWDC Staff:*

Elizabeth Carter, Ph.D. <i>Executive Director</i>	Yetty Shobo, Ph.D. <i>Deputy Director</i>
Laura Jackson <i>Operations Manager</i>	Christopher Coyle <i>Research Assistant</i>

Follow us on. . .

Tumblr: <http://vahwdc.tumblr.com/>

The Department of Health Professions Healthcare Workforce Data Center works to improve the data collection and measurement of Virginia's healthcare workforce through regular assessment of workforce supply and demand issues among the 80 professions and 350,000 practitioners licensed in Virginia by DHP.

The HWDC collects data on Virginia's licensed health professionals through surveys completed during the online license renewal and application process. Survey results and data may be accessed on our website: [www.dhp.virginia.gov/hwdc/](http://www.dhp.virginia.gov/hwdc/).

The HWDC also provides a series of Virginia Healthcare Workforce Briefs based on data collected by the US Department of Labor's Bureau of Labor Statistics and the US Department of Commerce' Bureau of Economic Analysis.

Virginia Healthcare Workforce Briefs:

Series 1: State & National Employment (Monthly)

Series 2: Virginia Regional Employment (Monthly)

Series 3: Income & Compensation (Quarterly)

## About the Data

Data in this report are from the US Department of Labor, Bureau of Labor Statistics' Current Employment Statistics program. The CES program surveys about 143,000 businesses and government agencies monthly. Unless otherwise noted, this series uses seasonally-adjusted data that removes seasonal variations related to weather, holidays, weekends, seasons and other predictable variations. This allows us to better examine underlying trends in the labor market. Data from recent months are preliminary and subject to revision in future releases from the CES. Revisions will be reported in future editions of this series. Unless otherwise noted, the CES data presented in this series:

### **Includes:**

- ◆ Data on employed individuals drawing a paycheck (payroll employees).
- ◆ All employees, regardless of role, occupation or hours worked.
- ◆ HC&SA employees in the private sector only.
- ◆ Persons employed by health professionals in private practice.
- ◆ Both government and private sector workers in nonfarm employment data.

### **Does not include:**

- ◆ Self-employed workers or volunteers, including health professionals in private practice.
- ◆ HC&SA employees in the public sector. (These are counted as government workers in monthly reports).
- ◆ Information on hours worked or the quality of employment.
- ◆ Government workers in HC&SA level data. (Government workers, regardless of occupation and role, are classified as public sector employees).