



Virginia Healthcare Workforce Briefs

Indicators from the Bureau of Labor Statistics'
Current Employment Statistics Survey
Series 1: State & National Employment

Series 1, Issue 59

February 2017

Inside this Brief:

Virginia HC&SA Employment	2
Virginia Employment	2
National Employment	3
State Employment Growth	3
About the Data	4

Data in the report are seasonally adjusted. Self-employed persons, including health professionals in private practice, are not included.

Highlights

- ◆ According to preliminary estimates, Virginia's Health Care & Social Assistance (HC&SA) sector lost 1,800 jobs in January, which represents a one-month annualized employment growth rate of -4.8%. However, employment in Virginia's HC&SA sector has still grown by 1.9% over the past year.
- ◆ Despite the job loss in Virginia's HC&SA sector, the state's total nonfarm payroll increased by 14,200 in December. Not only does this gain represent a one-month annualized growth of 4.4%, but it also represents its largest one-month gain since July 2015.
- ◆ The national HC&SA sector experienced a relatively weak month of employment growth in January with an increase of 26,100 jobs across the country. With this result, the 12-month moving average of the employment change in the national HC&SA sector dropped to 38,392 in January, reaching its lowest level since December 2014.
- ◆ While employment growth in the national HC&SA sector was rather modest, the nation's total nonfarm payroll enjoyed strong growth in January. During the month, 238,000 new jobs were created across the country, which represents the nation's largest one-month job gain since last September.

Data in Brief

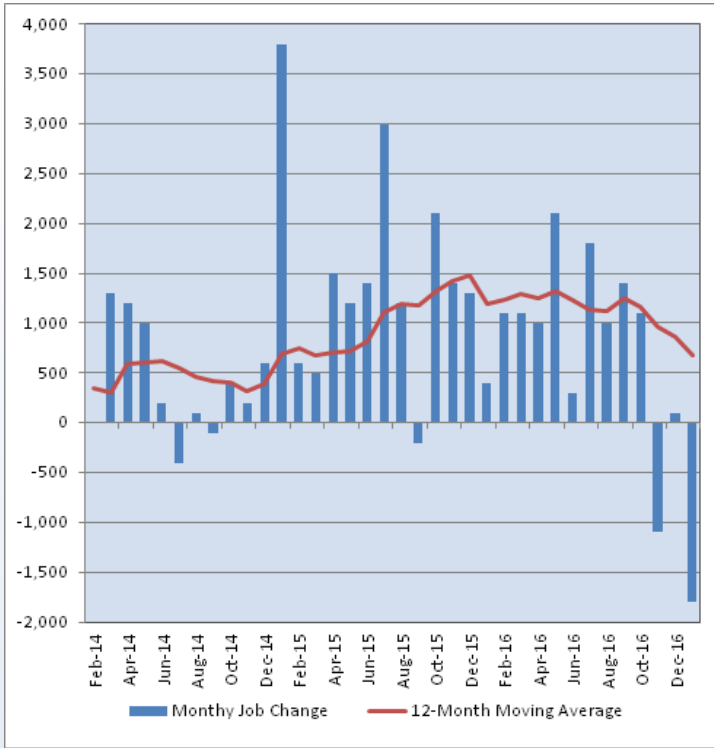
Seasonally Adjusted*	Employment, in Thousands				Growth Rate, Annualized		
	Jan. 2016	Oct. 2016	Dec. 2016	Jan. 2017	12 Month	3 Month	1 Month
Nonfarm, Total							
Virginia	3,894.2	3,939.4	3,936.3	3,950.5	1.4%	1.1%	4.4%
National	143,211.0	145,006.0	145,325.0	145,563.0	1.6%	1.5%	2.0%
Health Care & Social Assistance							
Virginia	428.5	439.4	438.4	436.6	1.9%	-2.5%	-4.8%
National	18,832.3	19,199.5	19,266.9	19,293.0	2.4%	2.0%	1.6%
All Other Nonfarm							
Virginia	3,465.7	3,500.0	3,497.9	3,513.9	1.4%	1.6%	5.6%
National	124,378.7	125,806.5	126,058.1	126,270.0	1.5%	1.5%	2.0%

Preliminary estimates are italicized

*Seasonally adjusted data are adjusted by the Bureau of Labor Statistics to account for weather, holidays and other seasonal changes. Economists use seasonally adjusted data to reveal underlying trends over time. This series uses seasonally adjusted data exclusively. When comparing data in this series to other HWDC series, or publications from other sources, it is important to note whether the data reported have been seasonally adjusted.

Virginia HC&SA Employment

Figure 1: Monthly Change in Employment in Virginia’s Health Care & Social Assistance Sector, Seasonally Adjusted.



According to the preliminary data released on Monday, March 13, 2017 by the U.S. Department of Labor, Bureau of Labor Statistics, Virginia’s HC&SA sector experienced its worst one-month job loss in nearly four years. In January, total employment in Virginia’s HC&SA sector declined by 1,800, which represents a one-month annualized growth rate of -4.8%.

Virginia’s HC&SA sector has seen its employment outlook weaken considerably over the past several months. In fact, Virginia has lost 2,600 HC&SA jobs in just the past three months. Given this recent weakness, the 12-month moving average of the employment change in Virginia’s HC&SA sector has now fallen for four consecutive months. With this decline, Virginia’s HC&SA sector has only created an average of 675 jobs per month over the past year. This represents the lowest value for this sector’s 12-month moving average since December 2014.

Regardless, Virginia’s HC&SA sector has still created 8,100 jobs during the past year. This job gain represents a 12-month employment rate of 1.9%.

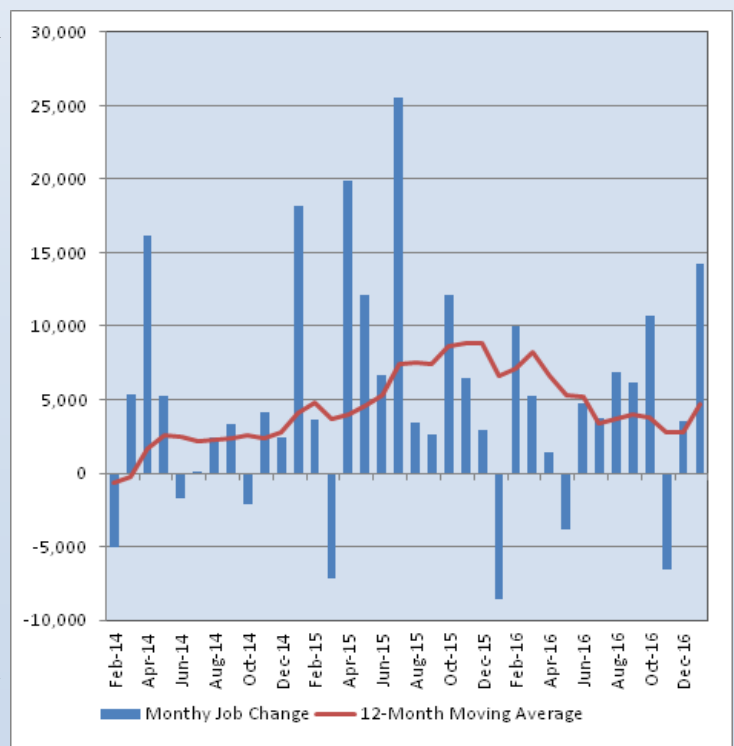
Virginia Employment

In January, Virginia’s total nonfarm payroll was able to overcome the employment losses in the state’s HC&SA sector. According to preliminary estimates, the state’s total nonfarm payroll increased in January by 14,200, which represents a one-month annualized employment growth rate of 4.4%. In addition, January’s result represents the largest one-month employment gain in the state’s total nonfarm payroll since July 2015.

Despite the employment weakness in Virginia’s HC&SA sector over the past several months, Virginia’s total nonfarm payroll has shown recent signs of strength. Since falling by 6,600 last November, the state’s total nonfarm payroll has increased by 17,700 over the past two months. Thanks to this job growth, the 12-month moving average of the employment change in Virginia’s total nonfarm payroll reached a seven-month high of 4,692 jobs in January.

Over the past year, Virginia’s total nonfarm payroll has increased by 56,300, which represents a 12-month employment growth rate of 1.4%. However, this growth rate is still slightly below the 1.6% national average.

Figure 2: Monthly Change in Employment in Virginia’s Total Non-farm Payroll, Seasonally Adjusted.

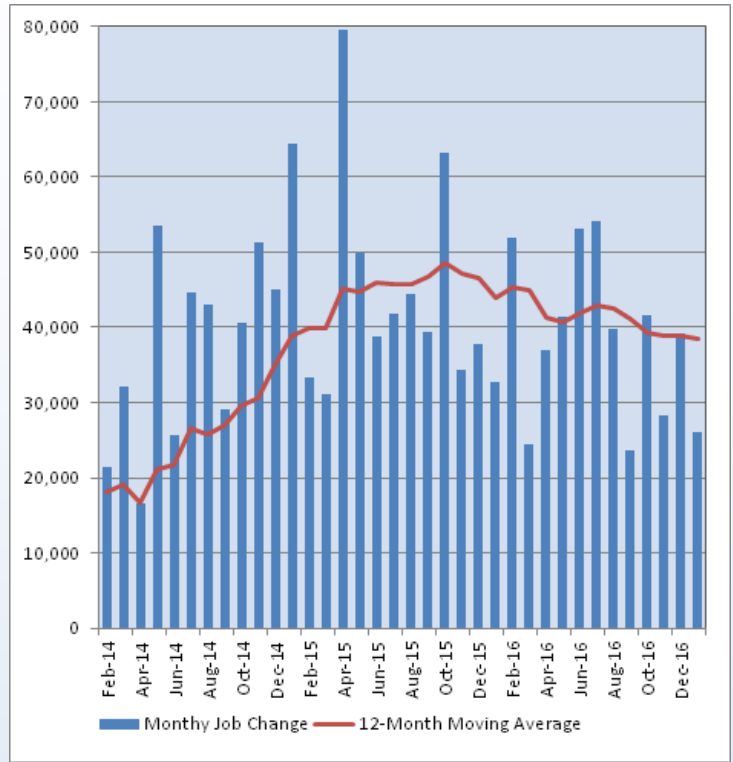


National Employment

After creating 39,200 new jobs in December, employment growth in the national HC&SA sector experienced a modest slow down in January. Employment in the national HC&SA sector increased in January by 26,100, which represents a one-month annualized growth rate of 1.6%. However, long-term employment growth in this sector has been somewhat more positive. Over the past three months, the national HC&SA sector has created 93,500 jobs, which represents a three-month annualized employment growth rate of 2.0%. In addition, employment in this sector has grown by 2.4% over the past year.

As for the overall national economy, the nation's total nonfarm payroll experienced strong employment growth in January with an increase of 238,000. Not only does this represent a one-month annualized employment growth rate of 2.0%, but it also represents its largest one-month job gain since last September. Long-term nationwide employment growth has only been slightly less impressive. Over the past year, the nation's total nonfarm payroll has increased by 2.35 million. This overall job gain represents a 12-month employment growth rate of 1.6%.

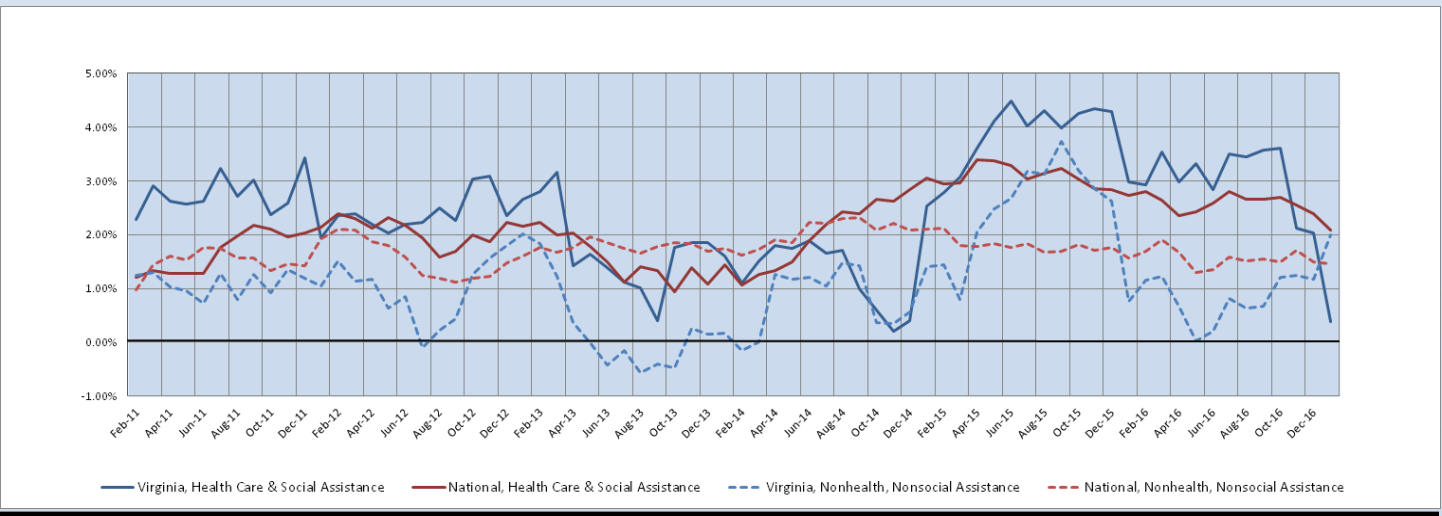
Figure 3: Monthly Change in Employment in National Health Care & Social Assistance Sector, Seasonally Adjusted



State Employment Growth

Given the recent job losses in Virginia's HC&SA sector, its six-month employment growth rate moving average has fallen precipitously over the past three months. In October, the six-month employment growth rate moving average in Virginia's HC&SA sector reached a ten-month high of 3.61%, but this average has fallen all the way to just 0.37% in January. This represents the lowest value for Virginia's HC&SA sector in more than two years. On the other hand, the six-month moving average of the growth rate in Virginia's total nonfarm payroll reached a one-year high of 2.00% in January. As for the national HC&SA sector, its six-month employment growth rate moving average fell to 2.09% in January, while the comparable moving average for the nation's total nonfarm payroll fell slightly during the month to 1.45%.

Figure 4: Six-Month Moving Average, Employment Growth, Seasonally Adjusted



Healthcare Workforce
Data Center

Perimeter Center
9960 Mayland Drive, Suite 300
Henrico, VA 23233-1463

Phone: (804) 367-2115
Fax: (804) 527-4434
E-mail: hwdc@dhp.virginia.gov

www.dhp.virginia.gov/hwdc/

HWDC Staff:

Elizabeth Carter, Ph.D. <i>Executive Director</i>	Yetty Shobo, Ph.D. <i>Deputy Director</i>
Laura Jackson <i>Operations Manager</i>	Christopher Coyle <i>Research Assistant</i>

Follow us on. . .

Tumblr: <http://vahwdc.tumblr.com/>

About the Data

Data in this report are from the US Department of Labor, Bureau of Labor Statistics' Current Employment Statistics program. The CES program surveys about 143,000 businesses and government agencies monthly. Unless otherwise noted, this series uses seasonally-adjusted data that removes seasonal variations related to weather, holidays, weekends, seasons and other predictable variations. This allows us to better examine underlying trends in the labor market. Data from recent months are preliminary and subject to revision in future releases from the CES. Revisions will be reported in future editions of this series. Unless otherwise noted, the CES data presented in this series:

Includes:

- ◆ Data on employed individuals drawing a paycheck (payroll employees).
- ◆ All employees, regardless of role, occupation or hours worked.
- ◆ HC&SA employees in the private sector only.
- ◆ Persons employed by health professionals in private practice.
- ◆ Both government and private sector workers in nonfarm employment data.

Does not include:

- ◆ Self-employed workers or volunteers, including health professionals in private practice.
- ◆ HC&SA employees in the public sector. (These are counted as government workers in monthly reports).
- ◆ Information on hours worked or the quality of employment.
- ◆ Government workers in HC&SA level data. (Government workers, regardless of occupation and role, are classified as public sector employees).

The Department of Health Professions Healthcare Workforce Data Center works to improve the data collection and measurement of Virginia's healthcare workforce through regular assessment of workforce supply and demand issues among the 80 professions and 350,000 practitioners licensed in Virginia by DHP.

The HWDC collects data on Virginia's licensed health professionals through surveys completed during the online license renewal and application process. Survey results and data may be accessed on our website: www.dhp.virginia.gov/hwdc/.

The HWDC also provides a series of Virginia Healthcare Workforce Briefs based on data collected by the US Department of Labor's Bureau of Labor Statistics and the US Department of Commerce' Bureau of Economic Analysis.

Virginia Healthcare Workforce Briefs:

Series 1: State & National Employment (Monthly)

Series 2: Virginia Regional Employment (Monthly)

Series 3: Income & Compensation (Quarterly)