



Virginia Healthcare Workforce Briefs

Indicators from the Bureau of Labor Statistics'
Current Employment Statistics Survey
Series 1: State & National Employment

Series 1, Issue 64

July 2017

Inside this Brief:

Virginia HC&SA Employment	2
Virginia Employment	2
National Employment	3
State Employment Growth	3
About the Data	4

Data in the report are seasonally adjusted. Self-employed persons, including health professionals in private practice, are not included.

Highlights

- ◆ According to preliminary estimates, Virginia's Health Care & Social Assistance (HC&SA) sector created 1,400 jobs in June, which represents a one-month annualized employment growth rate of 3.9%. Virginia's HC&SA sector has now increased employment in each of the past five months. During this period, 6,300 HC&SA jobs have been created throughout the state.
- ◆ Virginia's HC&SA sector was a strong contributor to the overall growth in the state's total nonfarm payroll, which increased by 9,400 in June. June's employment growth brings to an end three consecutive months of declines in the state's total nonfarm payroll
- ◆ The national HC&SA sector enjoyed a very strong month of employment growth in June with the creation of 59,100 new jobs. Not only does this represent a one-month annualized employment growth rate of 3.7%, it also represents its largest month employment gain since October 2015.
- ◆ The nation's total nonfarm payroll increased in June by 222,000, which represents a one-month annualized growth rate of 1.8%. During the first half of 2017, the nation's total nonfarm payroll has grown by 1,079,000. This increase is comparable to the gain of 1,081,000 during the first half of 2016.

Data in Brief

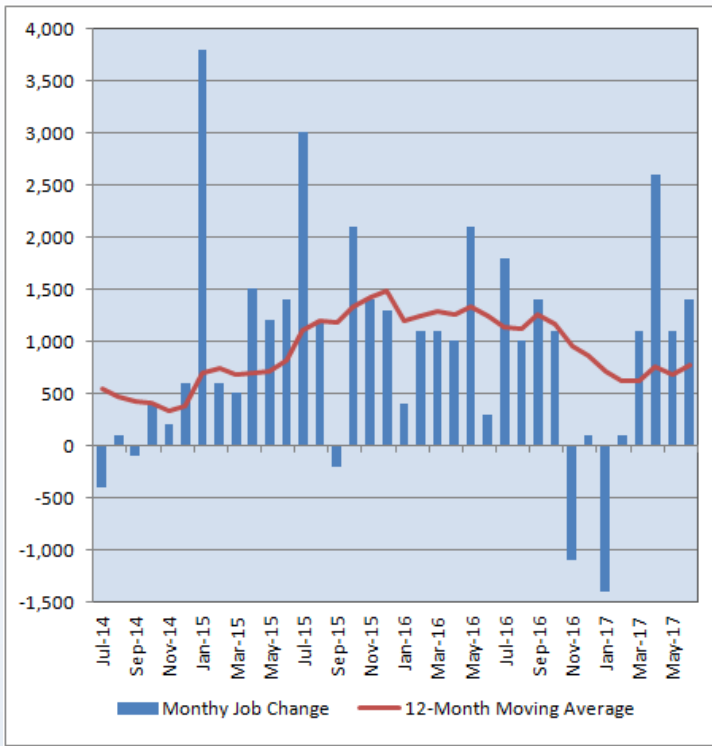
Seasonally Adjusted*	Employment, in Thousands				Growth Rate, Annualized		
	June 2016	Mar. 2017	May 2017	June 2017	12 Month	3 Month	1 Month
Nonfarm, Total							
Virginia	3,911.9	3,955.3	3,952.5	3,961.9	1.3%	0.7%	2.9%
National	144,166.0	145,823.0	146,182.0	146,404.0	1.6%	1.6%	1.8%
Health Care & Social Assistance							
Virginia	434.1	438.2	441.9	443.3	2.1%	4.7%	3.9%
National	19,040.4	19,346.7	19,424.5	19,483.6	2.3%	2.9%	3.7%
All Other Nonfarm							
Virginia	3,477.8	3,517.1	3,510.6	3,518.6	1.2%	0.2%	2.8%
National	125,125.6	126,476.3	126,757.5	126,920.4	1.4%	1.4%	1.6%

Preliminary estimates are italicized

*Seasonally adjusted data are adjusted by the Bureau of Labor Statistics to account for weather, holidays and other seasonal changes. Economists use seasonally adjusted data to reveal underlying trends over time. This series uses seasonally adjusted data exclusively. When comparing data in this series to other HWDC series, or publications from other sources, it is important to note whether the data reported have been seasonally adjusted.

Virginia HC&SA Employment

Figure 1: Monthly Change in Employment in Virginia’s Health Care & Social Assistance Sector, Seasonally Adjusted.



According to the preliminary data released on Friday, July 21, 2017 by the U.S. Department of Labor, Bureau of Labor Statistics, Virginia’s HC&SA sector created 1,400 jobs in June, which represents a one-month annualized employment growth rate of 3.9%. With this gain, Virginia’s HC&SA sector has now increased employment for five consecutive months.

During the first half of 2017, Virginia’s HC&SA sector has created 4,900 jobs across the state. However, despite this impressive growth, this gain represents a slowdown relative to the 6,000 HC&SA jobs that were created in Virginia during the first six months of 2016. Regardless, this recent employment surge has helped the state’s HC&SA sector to recover from its significant employment losses in November 2016 and January 2017.

Over the past 12 months, Virginia’s HC&SA sector has created an average of 767 jobs per month. This average monthly employment gain translates into a 12-month growth rate of 2.1%. In June 2016, employment in Virginia’s HC&SA sector had a year-over-year growth rate of 3.5%.

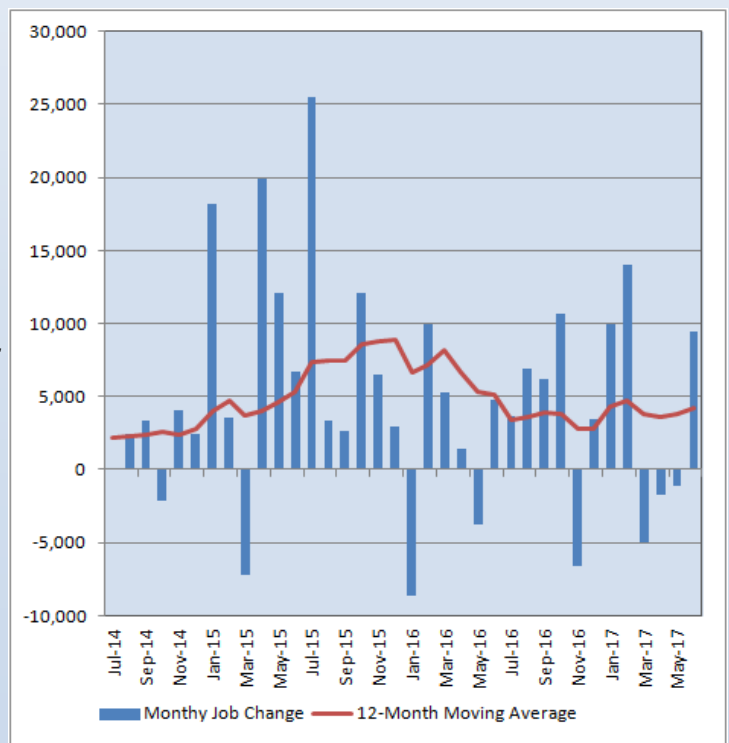
Virginia Employment

After three consecutive months of negative growth, Virginia’s total nonfarm payroll rebounded strongly in June with an increase of 9,400, which represents a one-month annualized growth rate of 2.9%. Between March and May, Virginia’s total nonfarm payroll fell by 7,800, but these losses were entirely wiped away by this month’s increase.

During the first six months of 2017, Virginia’s total nonfarm payroll has increased by 25,600. Most of these gains came from the first two months of the year during which the state’s total nonfarm payroll increased by 24,000. But even though the state’s total nonfarm payroll has fallen in three of the first six months of 2017, its current year-to-date growth far exceeds the comparable increase from the previous year. During the first six months of 2016, the state’s total nonfarm payroll only increased by 9,100.

Over the past year, the state’s total nonfarm payroll has increased by an average of 4,167 per month. This average monthly increase represents a 12-month growth rate of 1.3%. Virginia’s HC&SA sector has been responsible for 18% of this overall growth during the past year.

Figure 2: Monthly Change in Employment in Virginia’s Total Non-farm Payroll, Seasonally Adjusted.

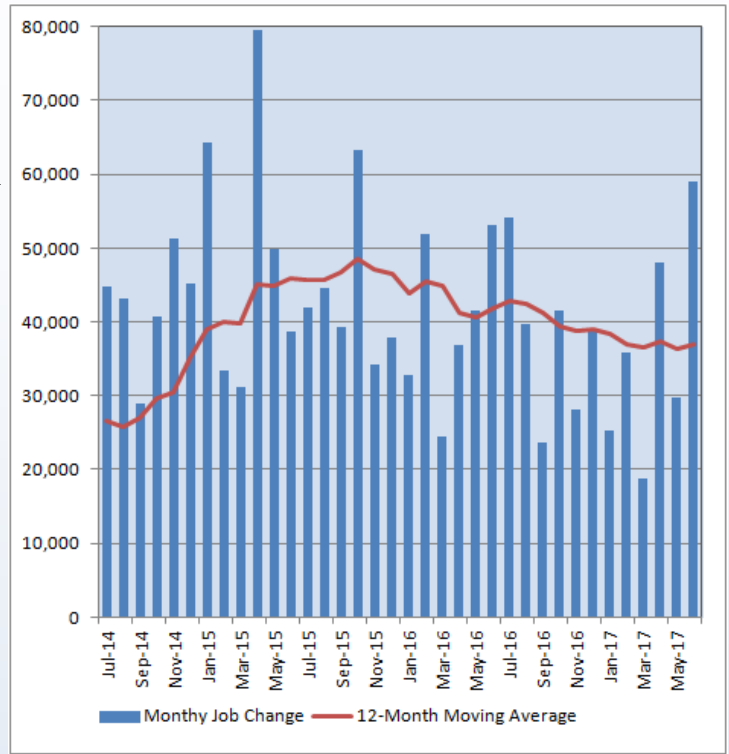


National Employment

The national HC&SA sector enjoyed its strongest monthly employment gain in nearly two years after creating 59,100 new jobs in June, which represents a one-month annualized employment growth rate of 3.7%. So far this year, the national HC&SA sector has increased employment by 216,700, and Virginia has been responsible for 2.3% of this overall growth. However, this year-to-date gain actually represents a bit of a slowdown relative to the 240,800 HC&SA jobs that were created throughout the country during the first six months of 2016. Over the past year, the national HC&SA sector has created an average of 36,933 jobs per month, which translates into a 12-month employment growth rate of 2.3%.

The nation's total nonfarm payroll also enjoyed a strong month of growth in June with an increase of 222,000. This gain represents a one-month annualized growth rate of 1.8%. This also represents the largest one-month increase in the nation's total nonfarm payroll since February. During the first six months of 2017, the nation's total nonfarm payroll has increased by 1,079,000, a gain that is in line with the increase of 1,081,000 that was observed during the first six months of 2016.

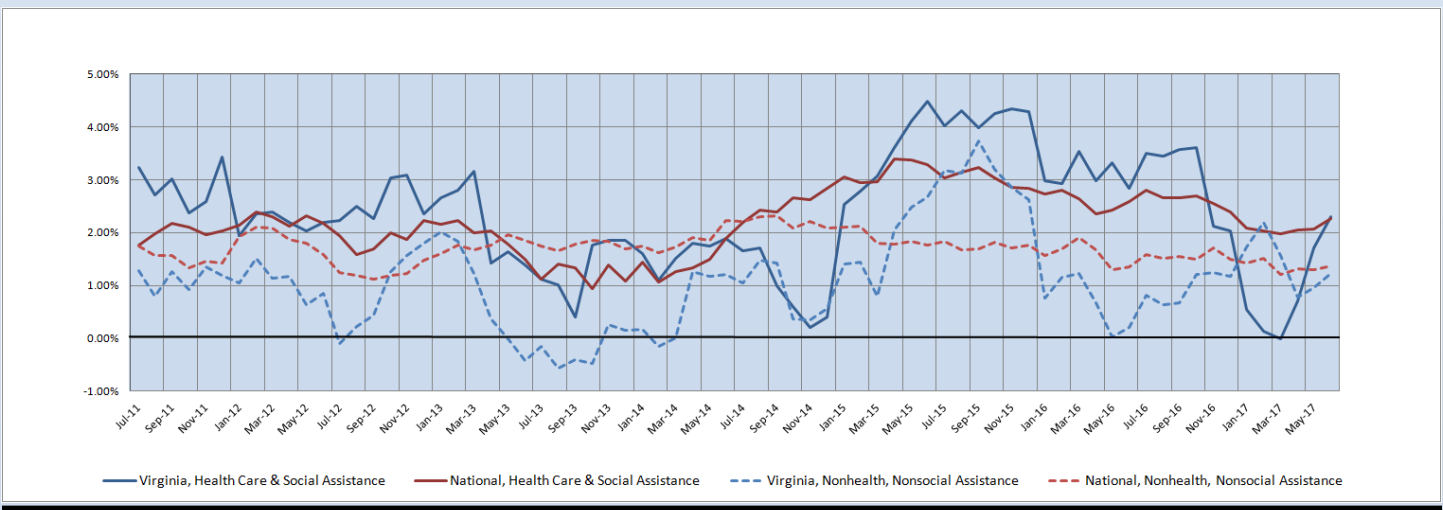
Figure 3: Monthly Change in Employment in National Health Care & Social Assistance Sector, Seasonally Adjusted



State Employment Growth

After creating 1,400 new jobs in June, the six-month moving average of the employment growth rate in Virginia's HC&SA sector increased from 1.71% to an eight-month high of 2.31%. Thus, the six-month moving average of the employment growth rate in Virginia's HC&SA sector is continuing to show significant improvement since falling to -0.01% in March. The six-month moving average of the growth rate in Virginia's total nonfarm payroll also rose during the month from 0.96% to 1.22%. As for the national HC&SA sector, its six-month employment growth rate moving average increased for the third consecutive month from 2.06% to 2.27%, thereby reaching its highest value since last December. Meanwhile, the nation's total nonfarm payroll saw its six-month growth rate moving average increase from 1.30% to 1.37% during the month.

Figure 4: Six-Month Moving Average, Employment Growth, Seasonally Adjusted



Healthcare Workforce
Data Center

Perimeter Center
9960 Mayland Drive, Suite 300
Henrico, VA 23233-1463

Phone: (804) 367-2115
Fax: (804) 527-4434
E-mail: hwdc@dhp.virginia.gov

www.dhp.virginia.gov/hwdc/

HWDC Staff:

Elizabeth Carter, Ph.D. <i>Executive Director</i>	Yetty Shobo, Ph.D. <i>Deputy Director</i>
Laura Jackson <i>Operations Manager</i>	Christopher Coyle <i>Research Assistant</i>

Follow us on. . .

Tumblr: <http://vahwdc.tumblr.com/>

The Department of Health Professions Healthcare Workforce Data Center works to improve the data collection and measurement of Virginia's healthcare workforce through regular assessment of workforce supply and demand issues among the 80 professions and 350,000 practitioners licensed in Virginia by DHP.

The HWDC collects data on Virginia's licensed health professionals through surveys completed during the online license renewal and application process. Survey results and data may be accessed on our website: www.dhp.virginia.gov/hwdc/.

The HWDC also provides a series of Virginia Healthcare Workforce Briefs based on data collected by the US Department of Labor's Bureau of Labor Statistics and the US Department of Commerce' Bureau of Economic Analysis.

Virginia Healthcare Workforce Briefs:

Series 1: State & National Employment (Monthly)

Series 2: Virginia Regional Employment (Monthly)

Series 3: Income & Compensation (Quarterly)

About the Data

Data in this report are from the US Department of Labor, Bureau of Labor Statistics' Current Employment Statistics program. The CES program surveys about 143,000 businesses and government agencies monthly. Unless otherwise noted, this series uses seasonally-adjusted data that removes seasonal variations related to weather, holidays, weekends, seasons and other predictable variations. This allows us to better examine underlying trends in the labor market. Data from recent months are preliminary and subject to revision in future releases from the CES. Revisions will be reported in future editions of this series. Unless otherwise noted, the CES data presented in this series:

Includes:

- ◆ Data on employed individuals drawing a paycheck (payroll employees).
- ◆ All employees, regardless of role, occupation or hours worked.
- ◆ HC&SA employees in the private sector only.
- ◆ Persons employed by health professionals in private practice.
- ◆ Both government and private sector workers in nonfarm employment data.

Does not include:

- ◆ Self-employed workers or volunteers, including health professionals in private practice.
 - ◆ HC&SA employees in the public sector. (These are counted as government workers in monthly reports).
 - ◆ Information on hours worked or the quality of employment.
 - ◆ Government workers in HC&SA level data. (Government workers, regardless of occupation and role, are classified as public sector employees).
-