



# Virginia Healthcare Workforce Briefs

Indicators from the Bureau of Labor Statistics'  
Current Employment Statistics Survey  
**Series 2: Regional & Sectoral Employment**

Series 2, Issue 68

November 2017

## Inside this Brief:

Regional Employment Growth	2
Regional HC&SA Share	3
Subsector Employment Growth	3
Subsector HC&SA Share	4
Region Map	5
About the Data	6

*Data in this report are not seasonally adjusted. Self-employed persons, including health professionals in private practice, are not included.*

## Highlights

- ◆ Data in this series are not seasonally adjusted and exhibit short-term volatility from fluctuations in holidays, weekends, weather and other seasonal factors. Estimates for the most recent month are preliminary.
- ◆ Virginia's Health Care & Social Assistance (HC&SA) sector created 3,400 jobs in September, which represents a one-month annualized employment growth rate of 9.5%.
- ◆ Northern Virginia's HC&SA sector created 2,300 jobs in October, which represents a one-month annualized employment growth rate of 23.4%. Hampton Roads also experienced a strong month of HC&SA employment growth with the addition of 1,200 new jobs in October. Richmond's HC&SA sector experienced no change in its employment situation, while the Rest of Virginia lost 100 HC&SA jobs.
- ◆ Ambulatory Health Care Services enjoyed its fifth consecutive month of positive employment growth after creating 2,400 new jobs in October. At the same time, Social Assistance now has a six-month streak of positive employment growth after adding 1,400 jobs during the month. As for Virginia's Hospitals, this HC&SA subsector created 100 jobs, while Virginia's Nursing & Residential Care Facilities lost 500 jobs.

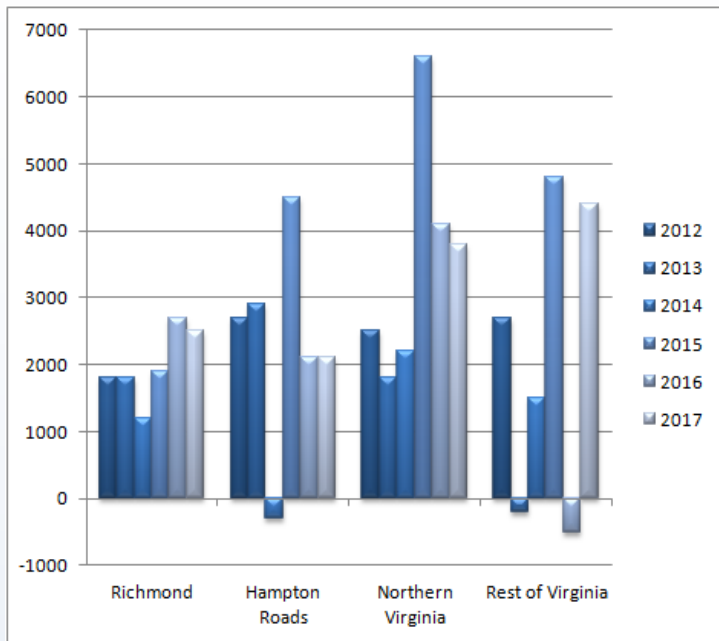
## Data in Brief

Not Seasonally Adjusted*	Employment, in Thousands				Growth Rate, Annualized		
	Oct. 2016	July 2017	Sept. 2017	Oct. 2017	12 Month	3 Month	1 Month
<b>Virginia</b>							
Total Nonfarm	3,960.6	3,991.2	3,981.1	3,994.8	0.9%	0.4%	4.2%
Health Care & Social Assistance	440.0	444.8	448.1	451.5	2.6%	6.2%	9.5%
<b>Hampton Roads</b>							
Total Nonfarm	777.9	777.1	768.4	768.8	-1.2%	-4.2%	0.6%
Health Care & Social Assistance	94.6	92.5	95.2	96.4	1.9%	18.0%	16.2%
<b>Northern Virginia</b>							
Total Nonfarm	1,454.8	1,468.7	1,457.2	1,468.1	0.9%	-0.2%	9.4%
Health Care & Social Assistance	127.9	132.7	130.2	132.5	3.6%	-0.6%	23.4%
<b>Richmond</b>							
Total Nonfarm	672.3	681.7	679.7	681.3	1.3%	-0.2%	2.9%
Health Care & Social Assistance	85.6	86.3	88.2	88.2	3.0%	9.1%	0.0%
<b>Rest of Virginia</b>							
Total Nonfarm	1,055.6	1,063.7	1,075.8	1,076.6	2.0%	4.9%	0.9%
Health Care & Social Assistance	131.9	133.3	134.5	134.4	1.9%	3.3%	-0.9%

Preliminary estimates are italicized

\*Seasonally adjusted data are adjusted by the Bureau of Labor Statistics to account for weather and other seasonal changes. Since the US Bureau of Labor Statistics does not provide seasonally adjusted data at this level, this series uses non-seasonally adjusted data exclusively. Seasonal variation may account for some of the variation in time series data. When comparing data in this series to other HWDC series or other publications it is important to note whether the data reported have been seasonally adjusted.

### Regional HC&SA Employment Growth, Level



**Figure 1: Annual Change in HC&SA Employment (Not Seasonally Adjusted, Full-Year Change for 2012-2016, Jan.-Oct. for 2017).**

According to preliminary data released on Friday, November 17, 2017, by the U.S. Department of Labor, Bureau of Labor Statistics, Virginia’s Health Care & Social Assistance (HC&SA) sector created 3,400 jobs in September. This gain represents a one-month annualized growth rate of 9.5%.

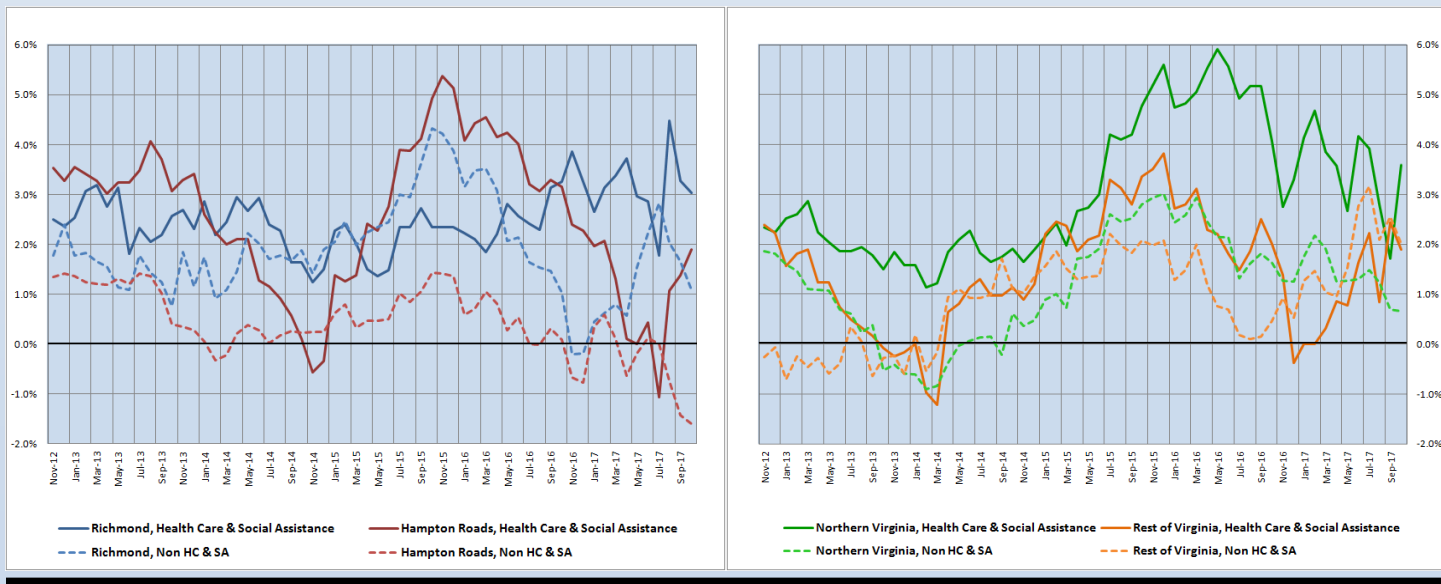
Over the previous two months, employment in Northern Virginia’s HC&SA sector declined by 2,500. However, this region recovered nearly all of these losses in October after creating 2,300 new HC&SA jobs during the month, which represents an impressive one-month annualized employment growth rate of 23.4%.

Hampton Roads also enjoyed a strong month of HC&SA employment growth in October. This region created 1,200 new HC&SA jobs, which translates into a 16.2% annualized employment growth rate. In addition, Hampton Roads created 3,900 HC&SA jobs over the past three months. As for Richmond, its HC&SA sector saw no change in its employment situation in October, while the Rest of Virginia lost 100 HC&SA jobs during the month.

### Year-Over-Year Regional Employment Growth

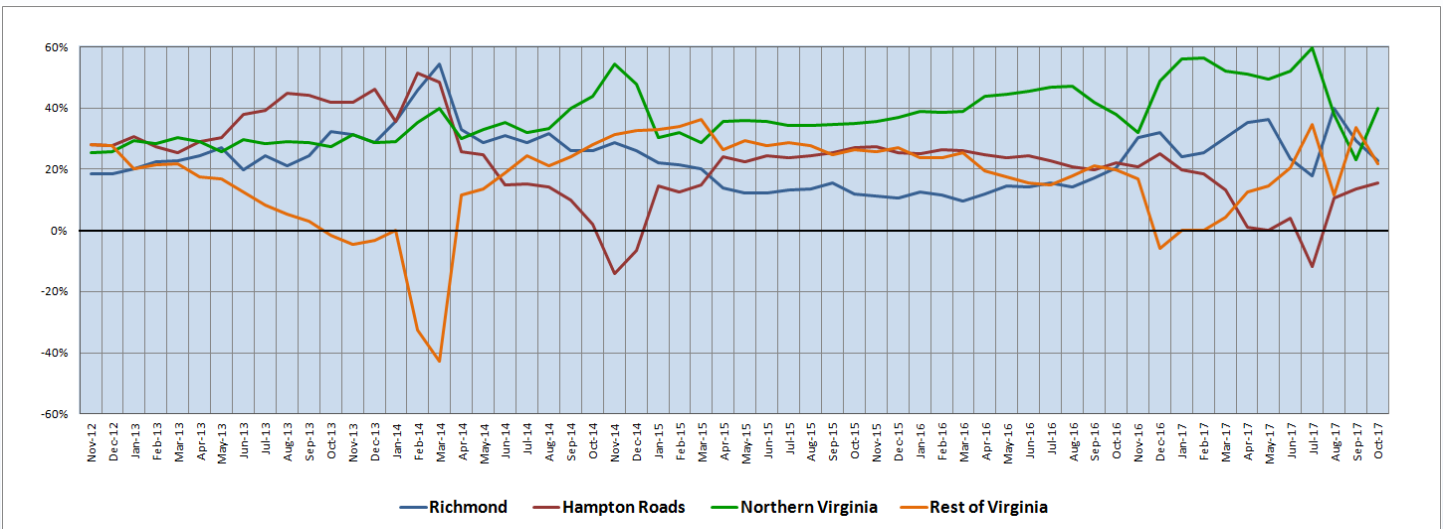
Northern Virginia’s year-over-year HC&SA employment growth rate more than doubled in October from 1.72% to 3.60%. Regardless, this significant one-month jump did not reverse the long-term downward trend in Northern Virginia’s year-over-year HC&SA employment growth rate, which reached a high of 5.91% in May of 2016. Meanwhile, Hampton Roads saw its year-over-year HC&SA employment growth rate reach an eight-month high of 1.90% in October. Richmond saw its year-over-year HC&SA employment growth rate dip slightly in October from 3.28% to 2.04%, while the Rest of Virginia’s HC&SA growth rate experienced a somewhat steeper decline from 2.44% to 1.90%.

**Figure 2: Year-Over-Year Employment Growth (Not Seasonally Adjusted).**



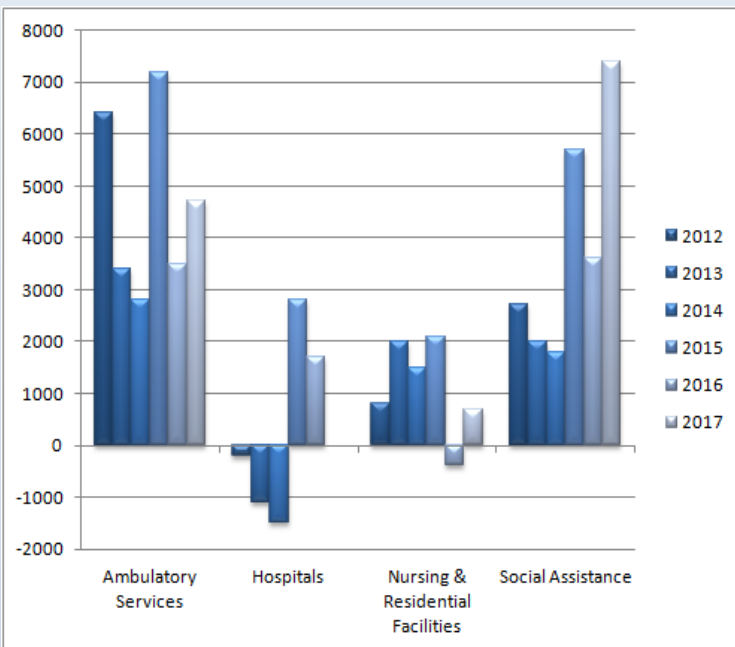
### Regional Share of 12-month Growth

**Figure 3: Regional Share of Previous 12-Month Employment Growth in Virginia’s HC&SA Sector, Not Seasonally Adjusted.**



In July, Northern Virginia was responsible for 59.52% of all HC&SA employment growth over the previous 12 months, but this growth share subsequently fell to just 23.16% during the following two months, thereby reaching a nearly seven-year low. However, Northern Virginia’s 12-month HC&SA employment growth share rebounded strongly in October to 40.00%. With this increase, Northern Virginia is once again the largest contributor to 12-month HC&SA employment growth in the state. Hampton Roads also saw an increase in its 12-month HC&SA employment growth share from 13.68% to 15.65% during the month. However, the Rest of Virginia’s 12-month HC&SA employment growth share declined from 33.68% to 21.74%, while Richmond’s growth share fell from 29.47% to 22.61%.

### Subsector Employment Growth



**Figure 4: Annual & YTD Change in HC&SA Subsector Employment (Not Seasonally Adjusted, Full-Year Change for 2012-2016, Jan.-Oct. for 2017).**

Ambulatory Health Care Services created 2,400 new HC&SA jobs in October. This represents the largest one-month employment gain in Virginia’s Ambulatory Health Care Services subsector in more than one decade. In addition, this also represents the fifth consecutive month in which Ambulatory Health Care Services has increased employment. Thanks to this strong employment growth, Ambulatory Health Care Services has already created 4,700 new HC&SA jobs so far this year, which exceeds the 3,500 jobs that were created in this subsector in all of 2016.

Virginia’s Social Assistance subsector also enjoyed a strong month of employment growth with the creation of 1,400 new jobs in October. Virginia’s Social Assistance subsector has now created jobs in each of the past six months. In addition, this subsector has already increased employment by 7,400 in 2017.

Virginia’s Hospitals experienced a modest employment gain in October with the creation of 100 jobs, while Nursing & Residential Care Facilities lost 500 jobs.

### Distribution of Growth by Subsector

Not Seasonally Adjusted	Employment, in Thousands				Growth Rate, Annualized		
	Oct. 2016	July 2017	Sept. 2017	Oct. 2017	12 Month	3 Month	1 Month
<b>Virginia</b>							
Health Care & Social Assistance	440.0	444.8	448.1	451.5	2.6%	6.2%	9.5%
<i>Ambulatory Health Care Services</i>	174.0	175.9	177.5	179.9	3.4%	9.4%	17.5%
<i>Hospitals</i>	105.8	105.7	105.8	105.9	0.1%	0.8%	1.1%
<i>Nursing &amp; Residential Care Facilities</i>	76.9	77.0	77.0	76.5	-0.5%	-2.6%	-7.5%
<i>Social Assistance</i>	83.3	86.2	87.8	89.2	7.1%	14.7%	20.9%
<b>Hampton Roads</b>							
Health Care & Social Assistance	94.6	92.5	95.2	96.4	1.9%	18.0%	16.2%
<i>Hospitals</i>	22.5	22.6	22.5	22.5	0.0%	-1.8%	0.0%
<b>Northern Virginia</b>							
Health Care & Social Assistance	127.9	132.7	130.2	132.5	3.6%	-0.6%	23.4%
<i>Ambulatory Health Care Services</i>	60.0	63.2	62.5	64.0	6.7%	5.2%	32.9%
<i>Hospitals</i>	24.8	24.6	24.6	24.6	-0.8%	0.0%	0.0%

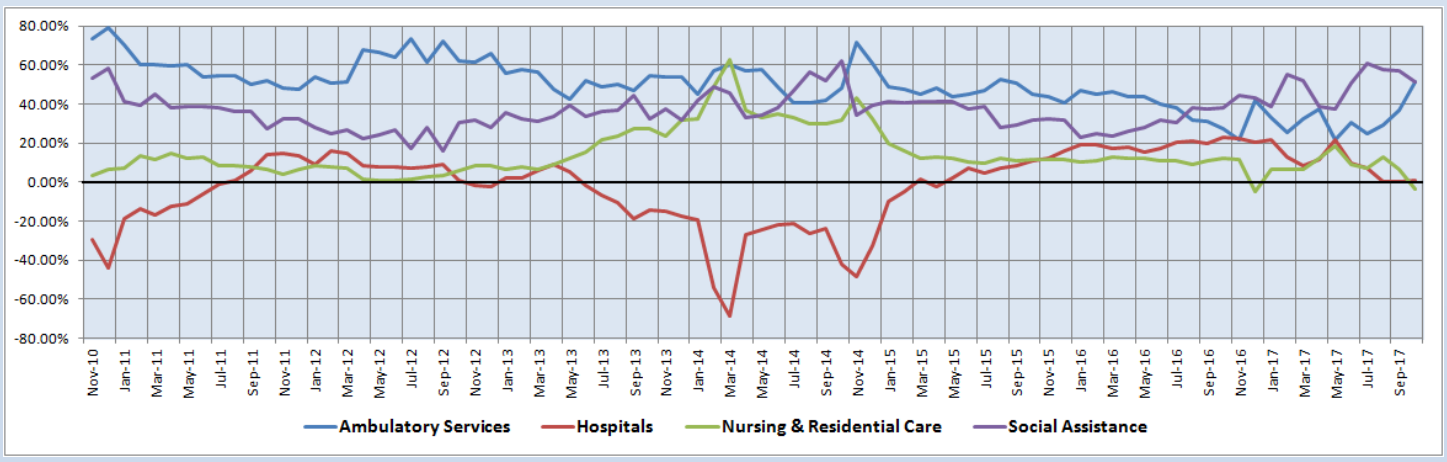
Preliminary estimates are italicized

Both Virginia’s Social Assistance and Ambulatory Health Care Services subsectors enjoyed very strong employment growth in October. Employment in Virginia’s Social Assistance subsector grew at a 20.9% annualized rate in October, while Ambulatory Health Care Services had a one-month annualized employment growth rate of 17.5%. Long-term employment growth in these two HC&SA subsectors has also been quite impressive. For example, Virginia’s Social Assistance subsector has seen employment grow by 7.1% over the past 12 months. At the same time, employment in Ambulatory Health Care Services has grown by 3.4%. Both of these growth rates are above the statewide 12-month average for the HC&SA sector.

### Share of 12-Month Growth by Subsector

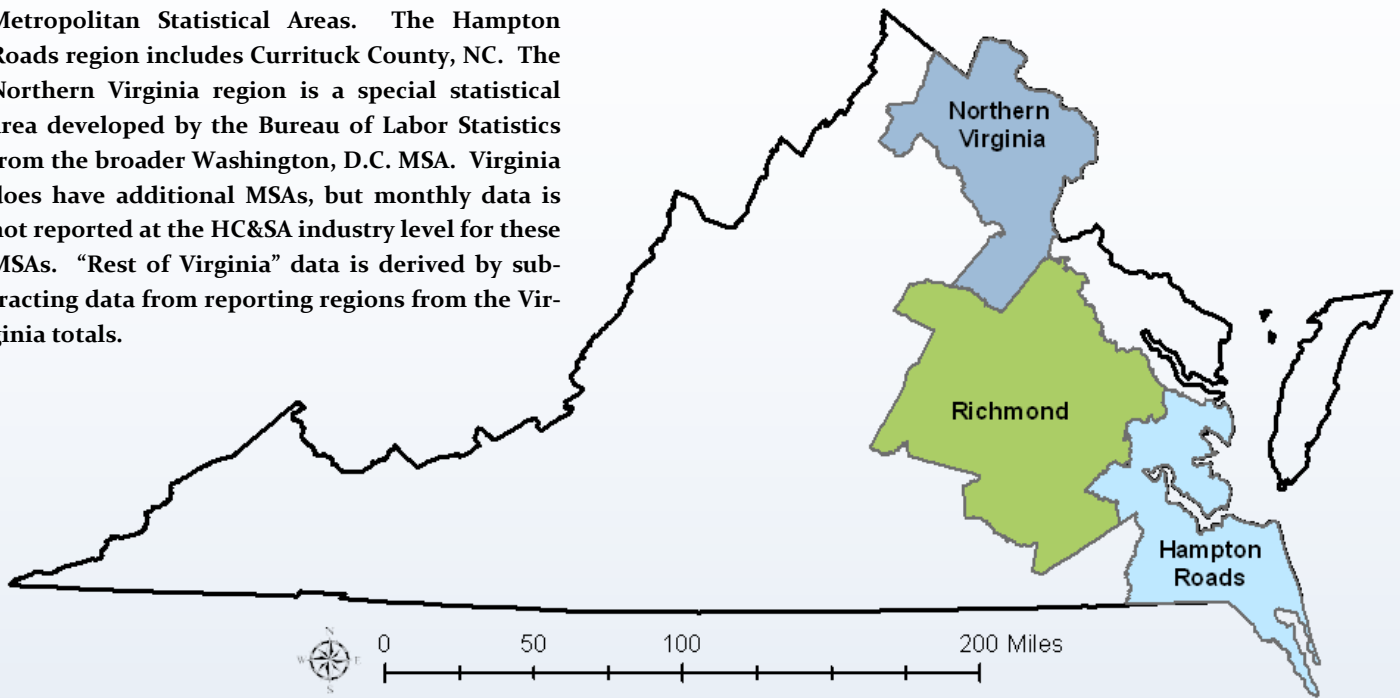
Ambulatory Health Care Services saw its 12-month HC&SA employment growth share increase significantly in October from 36.84% to 51.30%. This is also the same 12-month growth share of Virginia’s Social Assistance subsector. However, whereas the 12-month growth share of Ambulatory Health Care Services has been trending upward over the past several months, the growth share of Virginia’s Social Assistance subsector has been trending downward. For instance, its growth share has decline from 60.71% to 51.30% since July. Virginia’s Hospitals saw its growth share increase from 0.00% to 0.87% in October, while the growth share of Nursing & Residential Care Facilities fell from 6.32% to -3.48%.

**Figure 5: Share of Previous 12-Month Growth in Virginia’s HC&SA Subsectors (Not Seasonally Adjusted).**



### Region Map

HWDC *Briefing Series 2* uses Federally designated Metropolitan Statistical Areas. The Hampton Roads region includes Currituck County, NC. The Northern Virginia region is a special statistical area developed by the Bureau of Labor Statistics from the broader Washington, D.C. MSA. Virginia does have additional MSAs, but monthly data is not reported at the HC&SA industry level for these MSAs. “Rest of Virginia” data is derived by subtracting data from reporting regions from the Virginia totals.



### Region Detail

Northern Virginia		Richmond		Hampton Roads	
<i>Northern VA, (Non-standard CES Area 94783)</i>		<i>Richmond, VA (MSA 40060)</i>		<i>Virginia Beach-Norfolk-Newport News, VA-NC (MSA 47260)</i>	
<b>Counties:</b>	<b>Cities</b>	<b>Counties:</b>	<b>Cities</b>	<b>Counties:</b>	<b>Cities</b>
Arlington	Alexandria	Amelia	Colonial Heights	Gloucester	Chesapeake
Clarke	Fairfax	Caroline	Hopewell	Isle of Wight	Hampton
Fairfax	Falls Church	Charles City	Petersburg	James City	Newport News
Fauquier	Fredericksburg	Chesterfield	Richmond	Mathews	Norfolk
Loudoun	Manassas	Cumberland		Surry	Poquoson
Prince William	Manassas Park	Dinwiddie		York	Portsmouth
Spotsylvania		Goochland			Suffolk
Stafford		Hanover			Virginia Beach
Warren		Henrico		<i>Currituck, NC</i>	Williamsburg
		King & Queen			
		King William			
		Louisa			
		New Kent			
		Powhatan			
		Prince George			
		Sussex			

Healthcare Workforce  
Data Center

Perimeter Center  
9960 Mayland Drive, Suite 300  
Henrico, VA 23233-1463

Phone: (804) 367-2115  
Fax: (804) 527-4434  
E-mail: [hwdc@dhp.virginia.gov](mailto:hwdc@dhp.virginia.gov)

[www.dhp.virginia.gov/hwdc/](http://www.dhp.virginia.gov/hwdc/)

*HWDC Staff:*

Elizabeth Carter, Ph.D. <i>Executive Director</i>	Yetty Shobo, Ph.D. <i>Deputy Director</i>
Laura Jackson <i>Operations Manager</i>	Christopher Coyle <i>Research Assistant</i>

Follow us on. . .

Tumblr: <http://vahwdc.tumblr.com/>

### About the Data

Data in this report are from the US Department of Labor Bureau of Labor Statistics' Current Employment Statistics program. The CES program surveys about 143,000 businesses and government agencies monthly. Unless otherwise noted, this series uses data that are not seasonally adjusted. Seasonal variations related to weather, holidays, weekends, seasons and other predictable variations are apparent in the data. Short-term changes may be related to seasonal changes rather than underlying trends. Data from recent months is preliminary and subject to revision in future releases from the CES. Revisions will be reported in future editions of this series. Unless otherwise noted, the CES data presented in this series:

**Includes:**

- ◆ Data on employed individuals drawing a paycheck (payroll employees).
- ◆ All employees, regardless of role, occupation or hours worked.
- ◆ HC&SA employees in the private sector only.
- ◆ Persons employed by health professionals in private practice.
- ◆ Both government and private sector workers in nonfarm employment data.

**Does not include:**

- ◆ Self-employed workers or volunteers, including health professionals in private practice.
- ◆ HC&SA employees in the public sector. (These are counted as government workers in monthly reports).
- ◆ Information on hours worked or the quality of employment.
- ◆ Government workers in HC&SA level data. (Government workers, regardless of occupation and role, are classified as public sector employees).

The Department of Health Professions Healthcare Workforce Data Center works to improve the data collection and measurement of Virginia's healthcare workforce through regular assessment of workforce supply and demand issues among the 80 professions and 350,000 practitioners licensed in Virginia by DHP.

The HWDC collects data on Virginia's licensed health professionals through surveys completed during the online license renewal and application process. Survey results and data may be accessed on our website: [www.dhp.virginia.gov/hwdc/](http://www.dhp.virginia.gov/hwdc/).

The HWDC also provides a series of Virginia Healthcare Workforce Briefs based data collected by the US Department of Labor's Bureau of Labor Statistics and the US Department of Commerce' Bureau of Economic Analysis.

Virginia Healthcare Workforce Briefs:

Series 1: State & National Employment (Monthly)

Series 2: Virginia Regional Employment (Monthly)

Series 3: Income & Compensation (Quarterly)