



Virginia Healthcare Workforce Briefs

Indicators from the Bureau of Labor Statistics'
Current Employment Statistics Survey
Series 1: State & National Employment

Series 1, Issue 11

November 2012

Inside this Brief:

Jobs Created	2
Employment Growth Rate	2
Share of Employment	3
Share of Employment Growth	3
About the Data	4

Data in the report is seasonally adjusted, and includes employees of private firms only. Self-employed persons, including health professionals in private practice, are not included.

Highlights

- ◆ According to preliminary estimates, Health Care & Social Assistance (HC&SA) employment in Virginia grew by 200 jobs in October.
- ◆ Preliminary estimates for Virginia's HC&SA employment in September were revised upward by 900 jobs to 395,300, turning what was a loss of 200 jobs in September into a net gain of 700 jobs.
- ◆ YTD, Virginia's HC&SA sector has added 8,900 jobs, which represents an annualized growth rate of 2.77%. After September's revision, this represents a decline of 0.24% in the annualized growth rate.
- ◆ Due to its rapid growth in the second half of 2011, Virginia's HC&SA sector has seen its relative growth rate decline over the past 12 months. Currently, 22% of Virginia's employment growth is attributable to the HC&SA sector, which is down one-third from its high in August.
- ◆ YTD, Virginia has accounted for 2.95% of job growth in the national HC&SA sector. This is the first time that Virginia's share of national employment growth has fallen below 3% since February.

Data in Brief

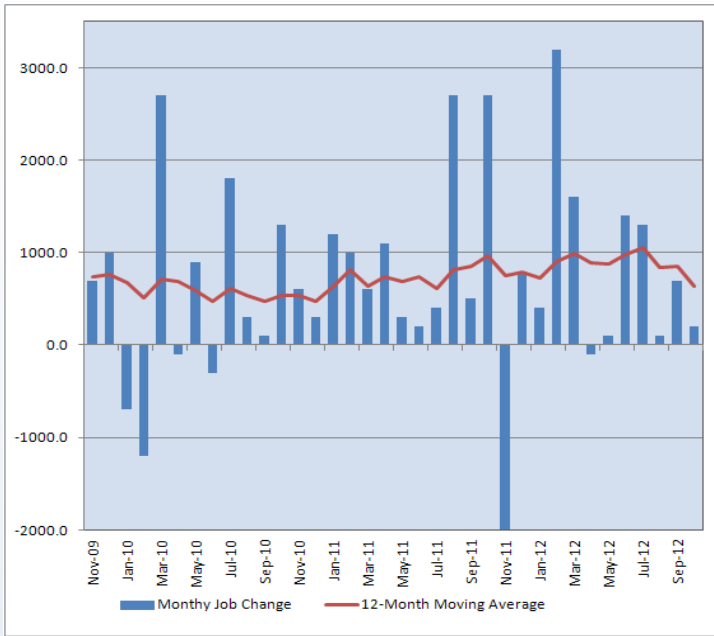
Seasonally Adjusted*	Employment, in Thousands				Growth Rate, Annualized		
	Oct. 2011	July 2012	Sept. 2012	Oct. 2012	12 Month	3 Month	1 Month
Nonfarm, Total							
Virginia	3,693.5	3,723.8	3,729.5	3,728.9 ^P	1.0%	0.5%	-0.2%
National	131,806.0	133,244.0	133,584.0 ^P	133,755.0 ^P	1.5%	1.5%	1.5%
Health & Social Assistance							
Virginia	387.8	394.5	395.3	395.5 ^P	2.0%	1.0%	0.6%
National	16,764.6	17,002.8	17,069.9 ^P	17,102.4 ^P	2.0%	2.4%	2.3%
All Other Nonfarm							
Virginia	3,305.7	3,329.3	3,334.2	3,333.4 ^P	0.8%	0.5%	-0.3%
National	115,041.4	116,241.2	116,514.1 ^P	116,652.6 ^P	1.4%	1.4%	1.4%

^P: Preliminary Results

*Seasonally adjusted data is adjusted by the Bureau of Labor Statistics to account for weather, holidays and other seasonal changes. Economists use seasonally adjusted data to reveal underlying trends over time. This series uses seasonally adjusted data exclusively. When comparing data in this series to other HWDC series, or publications from other sources, it is important to note whether the data reported has been seasonally adjusted.

Jobs Created

Figure 1: Monthly Change in Employment in Virginia's Health Care & Social Assistance Sector, Seasonally Adjusted.



According to preliminary data released on November 20, 2012 by the US Department of Labor, Bureau of Labor Statistics, employment in Virginia's HC&SA sector increased by 200 jobs in October. This represents the sixth consecutive month of positive employment growth in the HC&SA sector. Meanwhile, preliminary employment numbers in September were revised upward by 900 jobs. Revisions generally occur due to delayed responses from smaller establishments.

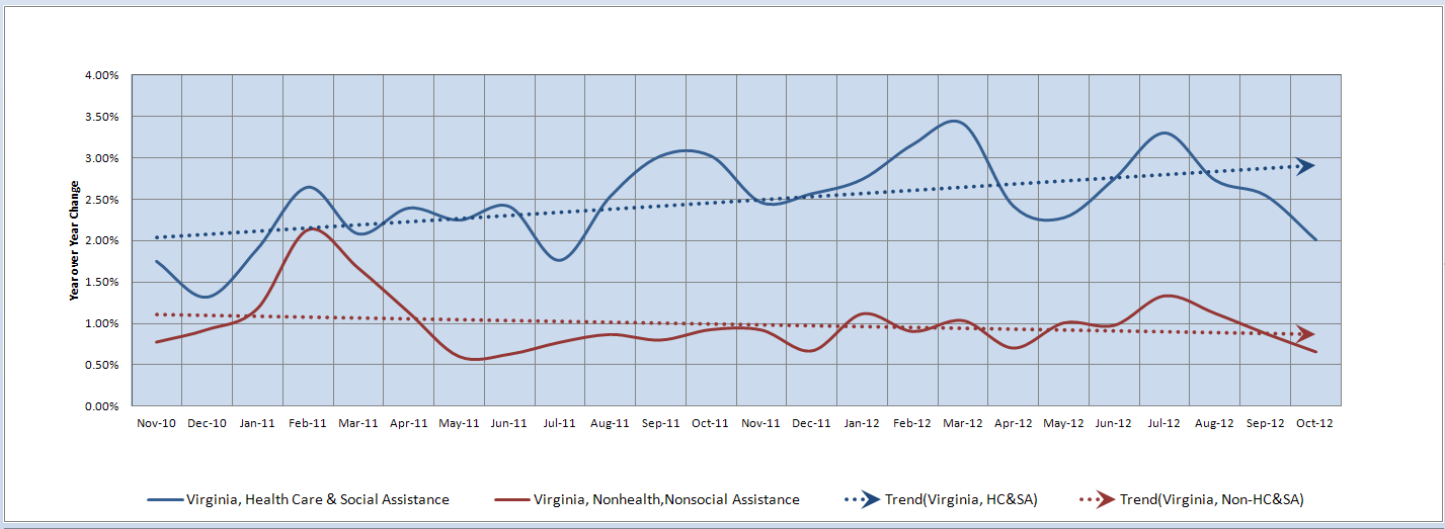
Although Virginia's HC&SA sector continues to contribute positively to employment levels in the state, hiring has been declining for most of the year. After reaching a high of 1,050 jobs per month in July, the 12-month moving average of Virginia's HC&SA employment has fallen to 642 jobs per month, a decline of nearly 40 percent. This represents the lowest level that the moving average has reached in 2012. Regardless, after September's significant upward revision, Virginia's HC&SA sector has grown by 8,900 jobs YTD.

Employment Growth Rate

In October, Virginia's total non-farm payroll fell by a relatively modest 600 jobs, which represents a one-month annualized growth rate of -0.2%. However, the Commonwealth has added 35,400 jobs to its overall non-farm workforce over the past 12 months. In addition, Virginia's unemployment rate of 5.7% is significantly lower than the nation's unemployment rate of 7.9%.

Relative to Virginia's non-farm payroll numbers, the HC&SA sector exhibited strong employment growth in October. In total, the HC&SA sector gained 200 jobs in September, which represents an annualized one-month gain of 0.6%. Despite October's results, however, employment growth has been slowing in recent months. For instance, the year-over-year change in HC&SA employment fell below two percent in October for the first time since July of 2011.

Figure 2: Year-Over-Year Employment Growth, Not Seasonally Adjusted.

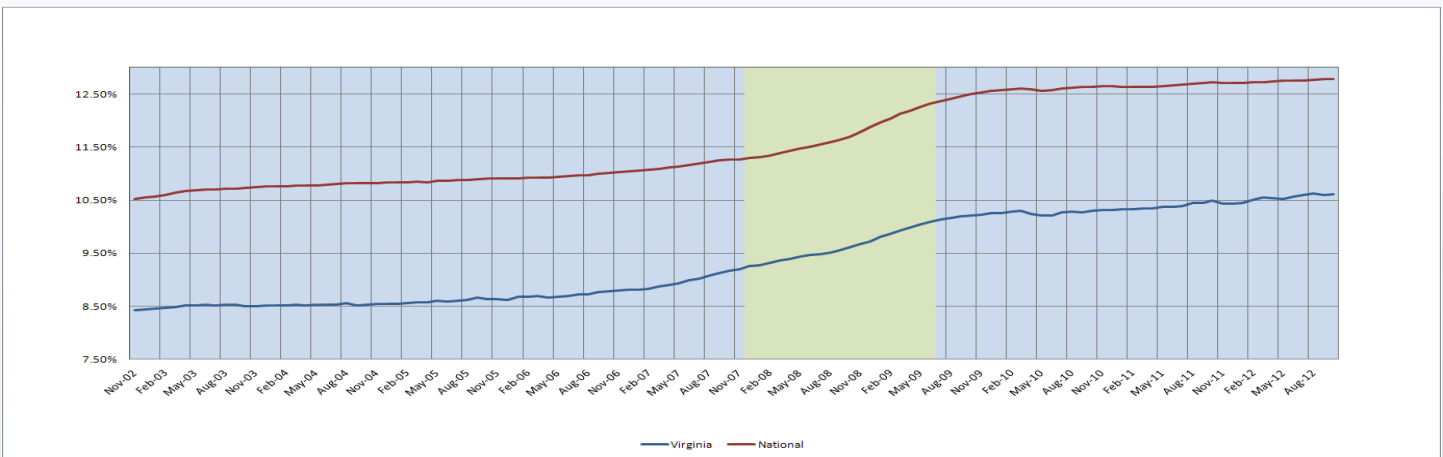


Share of Employment

For both the state of Virginia and the United States as a whole, the share of HC&SA employment relative to total non-farm payrolls remained essentially the same in October. Virginia’s HC&SA sector grew its share of state employment from 10.60% to 10.61%, while the national HC&SA sector grew its share from 12.78% to 12.79% during the month.

Ever since the United States emerged from the recession in July of 2009, HC&SA employment shares have remained relatively constant in both the state and national economy. This is especially true in 2012, where Virginia’s HC&SA employment share has increased by 0.17%, while the national HC&SA employment share has increased by just 0.08%.

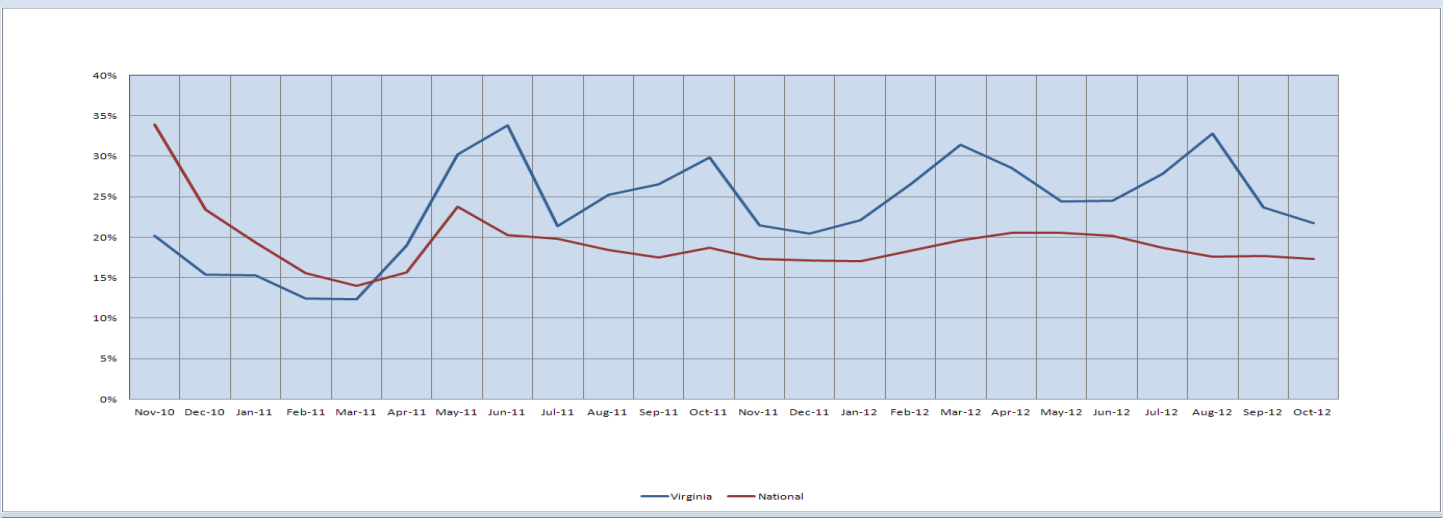
Figure 3: The Health Care and Social Assistance Sector’s Share of Nonfarm Payroll Employment, Seasonally Adjusted



Share of Employment Growth

After reaching a YTD high of 21 percent in April and May, the nation’s HC&SA share of 12-month nonfarm payroll employment growth has fallen to 17 percent in October. Meanwhile, Virginia’s HC&SA share of 12-month nonfarm payroll employment growth has fallen by one-third from its peak of 33 percent in August, but this was mainly due to an artifact of the calculation: 5,400 HC&SA jobs produced in August and October of 2011 were removed from the 12-month growth calculation, which artificially depressed the results in October. Likewise, it should also be noted that November’s results could be artificially inflated by the 2,000 jobs lost in November of 2011. These employment losses will be removed from the growth calculation next month, which could have the effect of boosting the share of growth attributable to the HC&SA sector.

Figure 4: The Health Care and Social Assistance Sector’s Share of 12-Month Nonfarm Payroll Employment Growth, Seasonally Adjusted



Healthcare Workforce
Data Center

Perimeter Center
9960 Mayland Drive, Suite 300
Henrico, VA 23233-1463

Phone: (804) 367-2115
Fax: (804) 527-4434
E-mail: hwdc@dhp.virginia.gov

www.dhp.virginia.gov/hwdc/

Virginia Healthcare Workforce Briefs are produced by
Justin Crow, MPA
HWDC Research Analyst
&
Christopher Coyle
HWDC Research Assistant

Follow us on. . .

Tumblr: <http://vahwdc.tumblr.com/>

The Department of Health Professions Healthcare Workforce Data Center works to improve the data collection and measurement of Virginia's healthcare workforce through regular assessment of workforce supply and demand issues among the 80 professions and 350,000 practitioners licensed in Virginia by DHP.

The HWDC collects data on Virginia's licensed health professionals through surveys completed during the online license renewal and application process. Survey results and data may be accessed on our website: www.dhp.virginia.gov/hwdc/.

The HWDC also provides a series of Virginia Healthcare Workforce Briefs based on data collected by the US Department of Labor's Bureau of Labor Statistics and the US Department of Commerce' Bureau of Economic Analysis.

Virginia Healthcare Workforce Briefs:

Series 1: State & National Employment (Monthly)

Series 2: Virginia Regional Employment (Monthly)

Series 3: Income & Compensation (Quarterly)

About the Data

Data in this report is from the US Department of Labor, Bureau of Labor Statistics' Current Employment Statistics program. The CES program surveys about 140,000 businesses and government agencies monthly. Unless otherwise noted, this series uses seasonally-adjusted data that removes seasonal variations related to weather, holidays, weekends, seasons and other predictable variations. This allows us to better examine underlying trends in the labor market. Data from recent months is preliminary and subject to revision in future releases from the CES. Revisions will be reported in future editions of this series. Unless otherwise noted, the CES data presented in this series:

Includes:

- ◆ Data on employed individuals drawing a paycheck (payroll employees).
- ◆ All employees, regardless of role, occupation or hours worked.
- ◆ HC&SA employees in the private sector only.
- ◆ Persons employed by health professionals in private practice.
- ◆ Both government and private sector workers in nonfarm employment data.

Does not include:

- ◆ Self-employed workers or volunteers, including health professionals in private practice.
 - ◆ HC&SA employees in the public sector. (These are counted as government workers in monthly reports. Approximately 54,500 of Virginia's public sector workers worked in the HC&SA sector in 2010 at the federal, state and local levels).
 - ◆ Information on hours worked or the quality of employment.
 - ◆ Government workers in HC&SA level data. (Government workers, regardless of occupation and role, are classified as public sector employees).
-